

ADAM'S

Est 1887



AT HOME

AN AUCTION OF FINE & UNIQUE INTERIOR FURNISHINGS

SUNDAY SEPTEMBER 18TH 2016

CONTACTS



Brian Coyle FCSI FRICS
CHAIRMAN



James O'Halloran BA FCSI FRICS
MANAGING DIRECTOR
j.ohalloran@adams.ie



Stuart Cole MSCSI MRICS
DIRECTOR
s.cole@adams.ie



David Britton BBS ACA
DIRECTOR
d.britton@adams.ie



Eamon O'Connor BA
DIRECTOR
e.oconnor@adams.ie



Kieran O'Boyle BA Hdip ASCSI
ASSOCIATE DIRECTOR
k.oboyle@adams.ie



Nick Nicholson
CONSULTANT
n.nicholson@adams.ie



Claire-Laurence Mestrallet
HEAD OF JEWELLERY
claire@adams.ie



Amy McNamara BA
FINE ART DEPARTMENT
amymcnamara@adams.ie



Adam Pearson BA
FINE ART DEPARTMENT
a.pearson@adams.ie



Ronan Flanagan
FINE ART DEPARTMENT
r.flanagan@adams.ie



Katie McGale BComm Intl MPhil
FINE ART DEPARTMENT
katie@adams.ie

AT HOME

AN AUCTION OF FINE & UNIQUE INTERIOR FURNISHINGS

AUCTION

Sunday 18th September 2016 at 11.00am

VENUE

Adam's Salerooms,
26 St. Stephen's Green,
Dublin 2

VIEWING

SEPTEMBER 16TH - SEPTEMBER 17TH

At Adam's, 26 St. Stephen's Green Dublin

Friday	16th September	10.00am - 7.00pm
Saturday	17th September	11.00am - 5.00pm

ADAM'S EST. 1887

26 St. Stephen's Green
Dublin D02 X665
Tel +353 1 6760261
info@adams.ie
www.adams.ie



IMPORTANT INFORMATION FOR PURCHASERS

1. ESTIMATES AND RESERVES

These are shown below each lot in this sale. All amounts shown are in Euro. The figures shown are provided merely as a guide to prospective purchasers. They are approximate prices which are expected, are not definitive and are subject to revision. Reserves, if any, will not be any higher than the lower estimate.

2. PADDLE BIDDING

All intending purchasers must register for a paddle number before the auction. Please allow time for registration. Potential purchasers are recommended to register on viewing days.

3. PAYMENT, DELIVERY AND PURCHASERS PREMIUM

Monday 19th September 2016. Under no circumstances will delivery of purchases be given whilst the auction is in progress. All purchases must be paid for and removed from the premises not later than Monday 19th September 2016 at the purchaser's risk and expense. After this time all uncollected lots will be removed to commercial storage and additional charges will apply.

Auctioneers commission on purchases is charged at the rate of 20% (exclusive of VAT). Terms: Strictly cash, bankers draft or cheque drawn on an Irish bank. Cheques will take a minimum of five working days to clear the bank, unless they have been vouched to our satisfaction prior to the sale, or you have a previous cheque payment history with Adam's. Purchasers wishing to pay by credit card (Visa & MasterCard) may do so, however, it should be noted that such payments will be subject to an administrative fee of 1.5% on the invoice total. American Express is subject to a charge of 3.65% on the invoice total. Debit cards including laser card payments are not subject to a surcharge, there are however daily limits on Laser card payments. Bank Transfer details on request. Please ensure all bank charges are paid in addition to the invoice total, in order to avoid delays in the release of items. Goods will only be released upon clearance through the bank of all monies due. Artists Resale Rights (Droit de Suite) is NOT payable by purchasers.

4. VAT REGULATIONS

All lots are sold within the auctioneers VAT margin scheme. Revenue Regulations require that the buyers premium must be invoiced at a rate which is inclusive of VAT. This is not recoverable by any VAT registered buyer.

5. CONDITION REPORTS

It is up to the bidder to satisfy themselves prior to buying as to the condition of a lot. Whilst we make certain observations on the lot, which are intended to be as helpful as possible, references in the condition report to damage or restoration are for guidance only and should be evaluated by personal inspection by the bidder or a knowledgeable representative. The absence of such a reference does not imply that an item is free from defects or restoration, nor does a reference to particular defects imply the absence of any others. The condition report is an expression of opinion only and must not be treated as a statement of fact.

Please ensure that condition report requests are submitted before 12 noon on Thursday 15th September as we cannot guarantee that they will be dealt with after this time.

6. ABSENTEE BIDS

We are happy to execute absentee or written bids for bidders who are unable to attend and can arrange for bidding to be conducted by telephone. However, these services are subject to special conditions (see conditions of sale in this catalogue). All arrangements for absentee and telephone bidding must be made before 5pm on the day prior to sale. Cancellation of bids must be confirmed before this time and cannot be guaranteed after the auction as commenced.

Bidding by telephone may be booked on lots with a minimum estimate of €500. Early booking is advisable as availability of lines cannot be guaranteed.

7. ALL LOTS ARE BEING SOLD UNDER THE CONDITIONS OF SALE AS PRINTED IN THIS CATALOGUE AND ON DISPLAY IN THE SALEROOMS.



1 AN EDWARDIAN THREE PIECE SILVER TEA SERVICE, London 1910, mark of Edward Barnard & Sons Ltd, comprising teapot, cream jug and sugar bowl, each chased and embossed with cartouche reserves surrounded by scrolling foliage shells and rockwork, applied with raised leaf capped scroll handle, (c.1617g all in)
€ 600 - 800

2 A CHINESE SILVER OBLONG BOX, HONG KONG c.1910, the hinged cover mounted with a coiled three claw dragon and wispy clouds, struck with makers mark for Wang Hing, 16.5cm wide
€ 400 - 600



3 A VICTORIAN THREE PIECE SILVER TEA SERVICE, London 1858, mark of Thomas Smiley, comprising teapot, sugar bowl and creamer, of baluster form, with cartouche to each side, surrounded by profusely chased and embossed floral and foliate decoration, the teapot with hinged lid and surmounted with finial in the form of an eagle, each with acanthus wrapped c-scroll handles, raised on acanthus leaf capped scroll feet (c.1461g). Teapot 18.5cm high, 27cm wide over handle and spout
€ 600 - 800

4 A VICTORIAN SCOTTISH THREE PIECE SILVER TEA SERVICE, Edinburgh 1861, comprising teapot, sugar bowl and cream jug, each of panelled baluster form, with c-scroll handles and applied shell and scrollwork rim, the bodies engraved and supported on scroll and strapwork feet, c.1524g
€ 600 - 1,000



- 5 A PAIR OF IRISH SILVER COMMEMORATIVE SALVERS, Dublin 1966, (c.497g all in). Each 19cm diameter

€ 200 - 300



- 6 AN IRISH COMMEMORATIVE SILVER SUGAR BOWL, Dublin 1966, with lobbed rim, raised on lion masked paw feet, (c.186g). 13cm diameter

€ 100 - 200



- 7 A PAIR OF IRISH COMMEMORATIVE CELTIC REVIVAL PATTERN NAPKIN RINGS, Dublin 1966; together with a similar salt cellar, Birmingham 1953, with blue glass liner and spoon; and two other napkin rings, (c.140g all in). (5)

€ 50 - 80



- 8 A CASED SET OF TEN IRISH COMMEMORATIVE CELTIC PATTERN SILVER TEASPOONS, Dublin 1966, (c.248g)

€ 100 - 150



- 9 AN IRISH COMMEMORATIVE SILVER TWO BRANCH CANDELABRA, Dublin 1966, mark of Irish Silver Ltd., engraved with Celtic and geometric motifs; together with an Edwardian silver epergne stand, Sheffield 1907, mark of Joseph Rodgers & Sons, (epergne stand c.404g). (2)

€ 200 - 400



- 10 A PAIR OF IRISH COMMEMORATIVE SILVER CANDLESTICKS, Dublin 1966, mark of LG, weighted. 20.5cm high; together with an Irish commemorative silver sugar bowl, Dublin 1966, mark of George Bellew & Sons Ltd, (c.155g). 12.5cm diameter

€ 100 - 200



- 11 A SILVER 'ÁISÉIRÍ NA CÁSCA' 1916-1966 GOLDEN JUBILEE COMMEMORATIVE MEDALLION, in fitted plastic case; together with a 1916-1966 Golden Jubilee commemorative ten shilling piece, also in fitted plastic case. (2)

€ 50 - 80



- 12 A COLLECTION OF THREE IRISH SILVER COMMEMORATIVE PLATES, Dublin 1973, mark of Royal Irish Ltd, depicting 'Eamon De Valera'. 28cm diameter; 'The Exterior of St. Patrick's Cathedral, Dublin'. 23cm diameter; and 'Section of the House of Commons', engraved verso "Limited edition No. 399 Autumn 1973". 23cm diameter, (c. 1181g all in). (3)

€ 400 - 600



- 13 A GEORGE VI SILVER FRUIT BOWL, Sheffield 1937, of shaped quatrefoil form with pierced decoration to border and body and raised on four pad feet (c.373g). 29.5 x 22cm

€ 100 - 150



- 14 A PAIR OF ART DECO SILVER SAUCE BOATS, Birmingham 1934, 1935, mark of Adolph Scott, one with Silver Jubilee mark, of elongated angled form, (c.311g). 18cm wide over handle and spout

€ 300 - 500



- 15 A SILVER THREE HANDLED TROPHY CUP, Sheffield 1897, with striddle fluted base, raised on leaf capped hoof feet and inscribed 'The Water Wags Challenge Cup Presented by the Dublin United Tramways Coy 1897' and with the names of boats and winners, (c.528g). 15cm high
€ 200 - 300



- 16 AN IRISH GEORGE III SILVER CHALICE, Dublin 1789, mark possibly of Thomas Jones, the conical body chased and embossed with vines and foliage surrounding central cartouche containing the letters "RPV", above tapering stem and engraved circular spreading foot, (c.217g). 8.5cm diameter, 16.25cm high
€ 500 - 800



- 17 A MISCELLANEOUS COLLECTION OF SILVER ITEMS, Please see the online catalogue (www.adams.ie) for further details on items, (c.528g all in)

€ 200 - 250



- 18 A CASED COMMEMORATIVE SILVER NOVELTY LETTER OPENER, Sheffield 1973, mark of Royal Irish Silver Co., topped with figural soldier in full suit of armour (c.62g). 19.5cm long; together with an Edwardian circular silver ink well, Birmingham 1907, 4.5cm high, weighted. (2)
€ 150 - 200



- 19 A PAIR OF VICTORIAN SILVER DESK CANDLESTICKS, Birmingham 1900, mark of Barker Brothers, in the Neo-Classical taste. 12cm high (weighted)

€ 80 - 120



- 20 A SILVER ART NOUVEAU STYLE SPILL VASE, Birmingham 1913, of flared tapering form, with curvy serrated rim. 25cm high (weighted); together with a plain silver bowl, on stepped circular foot, (c.93g). 11.5cm diameter. (2)

€ 150 - 250



- 21 AN IRISH SILVER SUGAR BOWL, Dublin c.1968 (date mark rubbed), mark of Royal Irish Silver Company, together with... see our online catalogue for further details.

€ 150 - 250



- 22 A SILVER TRI-HANDLED TROPHY CUP, Birmingham 1906, mark of Boardman, Gossop & Co Ltd, of plain design, on circular spreading foot, inscribed "The Bull Cups, Presented by Croker Barrington, May 1907, (2). see our online catalogue for further details.

€ 200 - 300



- 23 AN EDWARDIAN SILVER TWO HANDLED CUP,
Sheffield 1909, mark of Marples & Co., with wavy rim and decoration, on circular spreading foot; together with another later silver cup, Sheffield 1935, mark of Thomas Bradbury, in the form of a chalice, the conical body above tapering stem terminating in spreading circular foot, with bands of gadroon decoration to stem and foot, (c. 1120g). (2)

€ 500 - 700

- 24 A LARGE ARTS AND CRAFTS HAMMERED SILVER CHALICE BOWL,
Birmingham 1910, mark of George Harding & Sons Ltd, the conical bowl engraved with bands of geometric decoration interspersed with lozenges, each set with a green glass bead, above domed tapering foot, (c.684g). 20cm high, 19.5cm diameter

€ 300 - 500

- 25 AN EDWARDIAN SILVER LOVING CUP,
London 1902, mark of James Wakely & Frank Clarke Wheeler, with raised cast handles in the form of lion heads, plain banded body and raised on circular socle. 23cm wide over handles; together with a small Irish silver trophy cup, Dublin 1948, in the Neo-Classical taste; a Neo-Classical style cream jug; and a silver goblet, (c.933g). (4)

€ 300 - 500



- 26 AN ARTS AND CRAFTS HAMMERED SILVER BOWL,
Birmingham 1910, maker's mark rubbed, the conical bowl with a band of interspersed geometric decorations, raised on circular spreading foot surmounted by a thick band of similar decoration, (c.373). 13.5cm high, 19.5cm diameter

€ 200 - 300



- 27 A SILVER THREE PIECE TEA SERVICE IN THE NEOCLASSICAL TASTE,
Sheffield 1918, makers mark rubbed, chased and engraved with bellflower swags, the teapot with ebon handle and finial, (c.1306g all in). (3)

€ 500 - 700



- 28 A SILVER TEAPOT,
Birmingham 1939, makers mark rubbed, with ebon handle and finial, inverted lobed decoration to the domed lid and body; together with another lobed silver teapot, Birmingham, marks rubbed, with ebon handle and finial; a two handled sugar bowl, Birmingham 1934, with silver jubilee mark; cream jug, Birmingham 1946, of graduated lobed form, (c.1120g all in). (4)

€ 500 - 700



- 29 A VICTORIAN SILVER STEM CUP,
London 1890, mark of William Hutton & Sons, chased and embossed with flower heads, scrolling leafy and shell decoration to an orange peel ground, the knopped stem above spreading circular foot, (c.435g). 26cm high

€ 150 - 250



- 30 A LARGE SILVER METHERS CUP,
Birmingham 1937, mark of Joseph Gloster Ltd. 15.5cm high; together with another smaller example, Birmingham 1924, mark of James Woods & Sons. 9.5cm high; and a pair of Irish commemorative silver beakers, Dublin 1973, mark of Royal Irish Silver Co, with gilt interiors, (c.746g). (4)

€ 300 - 500



- 31 AN EDWARDIAN SILVER COFFEE POT,
Sheffield 1906, mark of Walker & Hall, in the Georgian Revival taste, with ebon handle and finial, the plain body with reeded girdle and raised on three shell capped tapering feet, (c.622g)

€ 200 - 300





32 A LATE VICTORIAN SILVER PUNCH BOWL,
London 1898, mark of Hawksorth, Eyre & Co Ltd, of circular form,
with reeded rim, spiral fluted to the rim, body and foot, bearing the in-
scription 'C.C.H. Ballynatray Foxhounds Ladies Cup 1899, Light Weight
Point to Point, Won by Mr Rowland Smyth's "Gold Whistle" ridden by
owner', raised on pedestal foot (c.917g).24.2cm diameter, 17.2cm tall

€ 500 - 700



33 AN IRISH CELTIC REVIVAL SILVER FOUR-PIECE TEA &
COFFEE SERVICE,
Dublin 1966, mark of Alwright & Marshall Ltd, comprising a teapot, cof-
fee pot, two-handled sugar bowl and cream jug, Ardagh pattern, each
decorated to the body and foot with bands of applied celtic interlacing
scrollwork, the teapot and coffee pot with hinged lids, ebon handles
and finials, the teapot spout terminating in a serpent head, each piece
raised on pedestal foot (c.1119g all in including handles). The coffee
pot 22.2cm tall (4)

€ 1,000 - 1,200



- 34 AN IRISH PROVINCIAL SILVER FIDDLE PATTERN SALAD FORK, Cork c.1815, mark of John Toleken (1768-1836), marked "STERLING", with plain handle and stem and shallow five prong bowl, (c.108g). 28.5cm long

€ 300 - 400



- 35 AN IRISH GEORGE III SILVER TAPER HANDLE DESSERT SPOON, mark of Carden Terry & Jane Williams, stamped "STERLING"; together with a pair of Irish George IV silver fiddle pattern teaspoons, Dublin 1829, mark of James Scott; a mother of pearl and silver bread fork; an Irish Victorian salt shovel; and a collection of novelty spoons, etc. (c.140g all in)

€ 100 - 150



- 36 A GEORGE IV BRIGHT-CUT SILVER SIFTING SPOON, Edinburgh 1823, mark of James & Walter Marshall, with pierced gilded bowl, handle crested; together with another Sheffield example with scallop shell bowl; an American example stamped "STERLING"; and a plated example. (4)

€ 80 - 120



- 37 A PAIR OF IRISH GEORGE IV SILVER FIDDLE PATTERN SAUCE LADLES, Dublin 1826, mark of Charles Marsh, the reserves engraved with initials; together with another Irish silver fiddle pattern sauce ladle, Dublin 1794, mark of Isaac Solomon, also engraved with initials, (c.108g all in). (3)

€ 100 - 150



- 38 A PAIR OF IRISH GEORGE III SILVER TAPER HANDLE SAUCE LADLES, Dublin 1806, mark of John Power, (c.124g); together with two plated ladles, one with fiddle pattern handle. (4)

€ 100 - 150



- 39 AN IRISH PROVINCIAL OLD ENGLISH PATTERN SALAD FORK, Cork c.1790, mark of Samuel Reily, marked "STERLING", with plain pointed handle tapering to a wide five prong bowl, (c.77g). 29cm long

€ 300 - 400



- 40 A MATCHED SET OF TWELVE IRISH GEORGIAN SILVER BRIGHTLY CUT ENGRAVED TEA SPOONS WITH SCALLOP SHELL BOWLS, Dublin, various dates and makers, (c.217g)

€ 250 - 350



- 41 A MISCELLANEOUS COLLECTION OF SILVER BRIGHT CUT DESSERT SPOONS, some Dublin 1786, 1794, 1806, Exeter 1833, etc., various makers, (c.560g). (21)

€ 300 - 500



- 42 A COLLECTION OF TWELVE IRISH SILVER TAPER HANDLE DESSERT SPOONS, Dublin 1807, mark of Elizabeth Bainbridge, each engraved with the letter 'B', (c.342g). Each 17.5cm long

€ 150 - 250



- 43 AN IRISH GEORGIAN STYLE
COMMEMORATIVE SILVER
STRAWBERRY DISH,
Dublin 1966, mark of William Egan & Sons,
(c.125g). 13.5cm diameter

€ 250 - 350



- 44 A SILVER THREE PIECE TEA
SERVICE,
Sheffield c.1934, mark of Cooper Brothers
& Sons Ltd., comprising teapot, sugar bowl
and cream jug in Georgian style, with plain
circular body and beaded rim on waisted
circular foot, the teapot inscribed "To Mona
on the occasion of her marriage, July 16th
1935, from the Finance Staff", (c.995g). (3)

€ 300 - 400



- 45 A PAIR OF SHAPED SILVER
PLATES,
Sheffield 1935, mark of Mappin & Webb
Ltd, the wavy rims interspersed with geo-
metric designs. c.21cm diameter; together
with a lozenge shaped stationary tray, Bir-
mingham 1904, mark of Williams Ltd; an-
other rectangular stationary tray with wavy
rim, etc. (c.964g silver items all in)

€ 300 - 400



- 46 AN ART DECO, HAMMERED
SILVER CENTRE BOWL,
London 1927, mark of the Goldsmith &
Silversmith Company 112 Regent Street,
the circular body applied with inter-
spersed rosettes, raised on plain disc feet.
(c.155g), 10.5 cm diameter

€ 120 - 180



- 47 A SET OF EIGHT MODERN IRISH
SILVER WINE GOBLETs,
Dublin 1976, mark of Alwright & Marshall,
with tapering body, the interior gilt lined,
raised on a plain stem and spreading foot
with scroll rim (c.1306g). 15cm tall (8)

€ 400 - 600



- 48 A PLAIN CONTINENTAL SILVER
BEAKER CUP,
Birmingham import marks, with applied
serpent-like 'c' scroll handle, and interior
divider piece; together with a plain silver
sauce boat, Sheffield 1922, with applied
raised cast 'c' scroll handle and raised on
three pad feet; another smaller similar
sauce boat; and a plain silver mether cup,
Birmingham 1926, (c.497g). (4)

€ 250 - 350



- 50 A CASED PAIR OF MODERN
SILVER CIRCULAR GOBLETs,
Birmingham 1973, of cylindrical form, the
bowls with gilt lining and having textured
engraved decoration (c.233g). 8.2cm high

€ 120 - 160

- 51 A SMALL SILVER FIGURAL
TROPHY CUP MODELLED AS AN
ALLEGORY OF VICTORY,
Birmingham 1947. 17.5cm high; togeth-
er with a Victorian silver figural mount,
presumably from a trophy cup, London
c.1860, mark probably that of Robert Har-
per, also an Allegory of Victory, the winged
figure holding trumpet. 11cm high, (c.560g
all in). (2)

€ 150 - 250





- 52 A LARGE IRISH GEORGE IV FIDDLE PATTERN TABLE SPOON, Dublin 1827, mark of Patrick Moore, re-tailed by Matthew West, crested, (c.62g). 23cm long; together with two silver fiddle pattern dessert spoons, (c.108g); and an EPNS example. (4)

€ 80 - 120



- 53 A SET OF SIX LARGE VICTORIAN SILVER FIDDLE PATTERN TABLE SPOONS, Exeter 1854, mark of Josiah Williams & Co, each engraved "Revd. AM", (c.435g). Each 23cm long

€ 250 - 350



- 54 A COLLECTION OF SIX LARGE IRISH GEORGE III BRIGHT CUT ENGRAVED TABLE SPOONS, Dublin 1794, 1803, and 1806, mark of John Power, each with crest, one example with vacant reserve, (c.373g). Each 23.5 cm long

€ 500 - 800



- 55 A COLLECTION OF TWELVE VICTORIAN SILVER BRIGHTLY CUT ENGRAVED TEASPOONS, London 1877-78, mark of Chawner & Co, (c.217g all in). Each 12.25cm long

€ 80 - 120



- 56 A LARGE COLLECTION OF IRISH GEORGIAN SILVER BRIGHT CUT ENGRAVED TEA SPOONS, Dublin, various dates and makers, some crested, some left vacant, (c.248g). (18)

€ 200 - 300



- 57 A COLLECTION OF FIVE LARGE IRISH GEORGE III BRIGHT CUT ENGRAVED TABLE SPOONS, Dublin 1804, 1807, 1813, 1818, various makers: Joseph Kinsella, Tudor & Whitford and William Law, George Nangle, Samuel Neville, each with vacant reserve, (c.311g). (5)

€ 300 - 500



- 58 A GEORGE III SILVER SAUCE LADLE, London 1779, mark of Hester Bateman, with scallop shell bowl, and feathered tapering handle (c.46g). 17.4cm long

€ 150 - 250



- 59 AN IRISH PROVINCIAL SILVER BRIGHT CUT POINT HANDLE TEASPOON, Cork c.1790, mark of John Nicholson; together with an Irish provincial sugar tong, mark of James Warner, engraved with initials MH, (c.30g all in). (2)

€ 250 - 350



- 60 AN IRISH GEORGE III SILVER WINE FUNNEL AND ASSOCIATED STAND, the funnel Dublin 1808, mark of William Bond, the stand Dublin 1809, mark of Robert Breeding, each engraved with a hound, (c.155g all in). 12cm high

€ 400 - 600



61 A CANTEEN OF MODERN SILVER CUTLERY,
Sheffield 1979, mark of R&B, comprising a twelve place setting of taper
beaded handle and brightcut style engraved table knives and forks;
dessert knives and forks; soup spoons; dessert spoons; teaspoons;
coffee spoons; fish knives and forks; four serving spoons; two ladles
and a three piece carving set, retailed by Weirs of Dublin. (129 pieces)

€ 3,000 - 5,000



- 62 AN IRISH GEORGE III PLAIN SILVER MARROW SCOOP, Dublin 1791, mark of Michael Keating, (c.38g). 22.5cm long

€ 200 - 300



- 63 AN IRISH GEORGE III HOOK BACK SOUP LADLE, Dublin 1775, mark of Michael Homer, with stylised scallop shell bowl, the tapering handle engraved with floral decoration to a cartouche containing crest, (c.186g). 36cm long

€ 200 - 300



- 64 AN IRISH GEORGE III FIDDLE PATTERN DIVIDING SPOON, Dublin 1811, mark of Richard Whitford, retailed by Matthew West, engraved with initials, (c.140g). 31.5cm long

€ 300 - 500



- 65 AN IRISH GEORGE III BRIGHT CUT ASPARAGUS TONGS, Dublin 1790, mark of Benjamin Tait, (c.140g). 26.5cm long

€ 300 - 500



- 66 AN IRISH GEORGIAN SILVER SUGAR NIPS, c.1760, with scallop shell bowls, inscribed 'OKM', (c.54g)

€ 150 - 250

- 67 A SET OF SIX HANOVERIAN PATTERN SILVER DESSERT SPOONS AND FORKS, Sheffield 1946, mark of B Bros, (c.622g)

€ 250 - 350



- 68 A PAIR OF RATTAIL PATTERN SILVER TABLE SPOONS, Birmingham 1921, mark of Elkington & Co Ltd, (c.171g)

€ 80 - 120



- 69 A PAIR OF SILVER GEORGE IV KING'S PATTERN TABLE SPOONS, London 1826, mark of Thomas Wilkes Barker, (c.202g)

€ 80 - 120



- 70 A SILVER HANOVERIAN PATTERN ICE CREAM SERVER AND FORK, London 1913, mark of Asprey & Co, retailed by Asprey, each of plain tapering design with large flat bowls, the fork with six serrated prongs, (c.217g). (2)

€ 100 - 150



- 71 AN IRISH PROVINCIAL SILVER DECANTER LABEL,
Cork c.1807, mark of Carden Terry and Jane Williams, engraved 'Sherry'; together with a provincial bright cut teaspoon, Cork c.1790, mark of Carden Terry, engraved with initials, (c.15g all in). (2)

€ 300 - 400



- 72 A COLLECTION OF FOUR IRISH GEORGE III SILVER DECANTER LABELS,
by various makers including James le Bas, William Law, George Nangle, etc, engraved 'Madeira', 'Sherry', 'Grave', 'Burgundy'. (4)

€ 250 - 400



- 73 A COLLECTION OF IRISH SILVER DECANTER LABELS,
Dublin 1964, mark of Jewellery & Metal Manufacturing Co Ltd, inscribed 'Tio Pepe', 'Amon-tillado', 'Oyster Dry', 'Celebration Cream', 'Dry Sack', 'A Winter's Tale'; together with a pair of Irish decanter labels, Dublin 1969,...see our online catalogue for further details. (c.172g). (11)

€ 100 - 200



- 74 AN IRISH GEORGE III SILVER SUGAR BOWL,
Dublin, mark of Matthew West, the out turned gadroon rim above chased body, raised on three shell capped hoof feet, (c.186g). 13cm diameter

€ 500 - 700



- 75 A SILVER TABLE BOX,
London 1923, the lid engraved with a Regency sporting scene, (c.311g). 13cm wide

€ 150 - 200



- 76 A NEAR PAIR OF IRISH CELTIC REVIVAL PATTERN SILVER BON BON DISHES,
Dublin 1967 and 1968; together with a small two handled sugar bowl and cover, Birmingham 1921; and an Irish Georgian bright cut spoon, (c.311g all in). (3)

€ 100 - 200



- 77 AN ADAMS REVIVAL SILVER URN SHAPED COFFEE JUG,
Sheffield 1918, mark of R F Mosley & Co., with turned urn shaped ebon finial and scroll handle, (c.653g). 26cm high

€ 250 - 350



- 78 A VICTORIAN SILVER SUGAR BOWL,
Birmingham 1887, of circular form, with fold-over beaded rim, the body embossed and chased with milkmaid pattern, vacant cartouche and birds, the base with sunburst, raised on three lion mask paw feet (c.186 grams). 12.6cm diameter

€ 60 - 100



- 79 AN AMERICAN STERLING STANDARD SILVER BOWL,
mark of Whiting Manufacturing Co., of circular form with cast wavy rim, the body embossed and chased with scroll and foliate motifs (c.245g). 18cm diameter

€ 150 - 250



- 80 AN IRISH PROVINCIAL GEORGE III HANOVERIAN PATTERN SILVER TABLESPOON, Limerick c.1785, mark of Maurice Fitzgerald (fl.1760-1817), plain decoration, (c.62g). 22.5cm long

€ 700 - 1,000



- 81 A CASED SET OF FOUR VICTORIAN SILVER APOSTLE SPOONS, London 1883, mark of George Maudsley Jackson, with sealed top, the box with retail mark West & Sons, 18 & 19 College Green, Dublin, (c.248g)

€ 100 - 200



- 82 A SET OF SIX SILVER KINGS PATTERN TEASPOON, London 1912, mark of James William Benson; together with another silver kings pattern teaspoon, London 1874, (c.217g)

€ 60 - 80



- 83 A SET OF SIX SILVER FISH KNIVES AND FORKS, Birmingham 1946, mark of Elkington & Co Ltd, Dublin import marks, (c.622g)

€ 200 - 300



- 84 A PAIR OF VICTORIAN SILVER FISH SERVERS, Birmingham 1860, mark of John Gilbert, in the Rococo Revival taste, (c.326g)

€ 150 - 250



- 85 A SET OF SIX HANOVERIAN PATTERN SILVER PASTRY FORKS, Sheffield 1948, mark of Emile Viner, (c.202g)

€ 60 - 80



- 86 AN IRISH SILVER FIDDLE PATTERN SUGAR TONGS, Dublin 1837, mark of Peter Walsh, crested; together with a pair of Irish silver fiddle and rattail pattern teaspoons, Dublin 1871, mark of John Smith, engraved with initials, (c.124g)

€ 100 - 150



- 87 A SET OF SIX HANOVERIAN PATTERN SILVER TEA SPOONS, Birmingham 1963, mark of Arthur Price & Co Ltd, Dublin import marks, each with pointed bowls, (c.124g)

€ 40 - 60



- 88 A MISCELLANEOUS COLLECTION OF SILVER FLATWARE, including pairs of teaspoons, various patterns, (c.995g)

€ 300 - 400



- 89 TWO SILVER MOUNTED AND CLEAR GLASS PERFUME BOTTLES, Chester 1907, Chester 1896, each of globular form, together with a contemporary silver sugar castor and cover, Birmingham 1970, of cylindrical form with pierced pull off cover. (c.248g), 16cm high.
€ 200 - 300



- 90 A PAIR OF IRISH PLAIN OVAL SILVER SAUCEBOATS, Dublin 1959, mark of William Egan & Sons, with beaded feathered handle and raised on three shell capped hoof feet, (c.264g). Each 16cm wide over handle and spout
€ 300 - 500



- 91 AN EDWARDIAN LADY'S LEATHER TRAVELLING CASE, fitted with a set of silver mounted and cut glass accessories. 36 x 25.5cm.
€ 80 - 120



- 92 A CASED SILVER CONDIMENT SET, Birmingham 1927, mark of Adie Brothers, of square form, comprising: salt and pepper cellars, mustard pot, and a pair of salts with blue glass liners and spoons; together with a set of twelve late Victorian silver teaspoons, London 1893, makers mark of George Maudsley Jackson, with twist handles, contained in fitted case (c.263g)

€ 150 - 200



- 93 A SILVER THREE PIECE BACHELOR'S TEA SERVICE, London 1931, mark of Crichton Brothers, in early Georgian style, comprising of teapot, sugar bowl, and cream jug, each of melon shape engraved with strap work bands, (c.746g)

€ 300 - 500



- 94 AN EDWARDIAN SILVER CARD TRAY, Birmingham 1905, mark of Barker Brothers, of plain circular form, with beaded rim, having inscription to the underside, and raised on three scroll feet. 20.5cm diameter; together with a Victorian silver toddy ladle, Glasgow 1854, with oval bowl, and twist handle (c.388g). 21cm long (2)

€ 150 - 200



- 95 A PAIR OF EDWARDIAN SILVER VASES, Sheffield 1904, of circular baluster form with repousse scroll and wave decoration having flared rim and raised on pedestal feet (c.435g). 18cm high

€ 150 - 200



- 96 A GEORGE IV IRISH SILVER CIRCULAR BON BON DISH, Dublin 1912, mark of West & Son, the pierced, repousse, chased and engraved sides decorated with dogs and bird with-in vine and other foliage (c.186g). 18.5cm diameter

€ 250 - 350



- 97 A GEORGE III BRIGHT CUT SILVER two handle sugar bowl, London 1807, of oblong shape with feathered rim above narrow bands of foliate decoration, one side engraved with crest, the other with initials, on four spherical feet, (c.311g), 18cm wide over handles

€ 250 - 300



- 98 A THREE PIECE SILVER TEA AND COFFEE SERVICE, Birmingham 1950, comprising a plain cylindrical teapot, coffee pot and matching sugar bowl, decorated with a narrow Celtic band and raised on stepped rim foot (c.870g). Pots 18cm high

€ 300 - 400



- 99 A MODERN IRISH SILVER CIRCULAR SALVER, Dublin 1959, mark of Alwright & Marshall, with pierced and engraved Celtic border and raised on serpent head feet (c.1244g). 31cm diameter

€ 800 - 1,200



- 100 AN ASSORTED COLLECTION OF SILVER ITEMS, including a small christening cup, an oval tea caddy, photograph frames, miniature condiments, ring stand, matchbox holder, locket, etc.

€ 200 - 300



- 101 A MISCELLANEOUS COLLECTION OF SILVER
Please see the online catalogue for further details on items

€ 80 - 120



- 102 A SMALL SILVER CONDIMENT SET, Birmingham 1931, mark of Northern Goldsmiths Co., comprising mustard pot with blue glass liner, open salt with blue glass liner, and a miniature pepper canister; together with another miniature pepper canister, (c.140g). (4)

€ 50 - 80



- 103 AN INTERESTING COLLECTION OF SILVER ITEMS, comprising a silver cased extendable swizzle stick, a three prong skewer fork with ring handle, a silver and cut glass ointment spoon, a bookmark in the form of a trowel and a pair of lobster picks etc.

€ 120 - 180



- 104 A COLLECTION OF SILVER FLATWARE, including two pairs of Irish fiddle pattern table forks, another by Samuel Neville of similar design, a set of six taper handle coffee spoons and miscellaneous items

€ 150 - 250



- 105 A GROUP OF NINE SILVER AND TORTOISE SHELL VANITY ACCESSORIES, including hand mirror, clothes brushes etc.

€ 150 - 200



- 106 A LARGE COLLECTION OF 19TH CENTURY SILVER AND ENAMEL BACKED VANITY BRUSHES AND MIRRORS, of varying designs

€ 200 - 300



107 A LARGE CELTIC PATTERN CIRCULAR SILVER FRUIT BOWL,
Birmingham 1947, with decorated rim and raised on scroll and serpent head feet (c.1275g). 26cm diameter
€ 500 - 800



108 AN IRISH THREE PIECE SILVER TEA SERVICE,
Dublin 1933, mark of Hopkins and Hopkins, comprising teapot, two handled sugar bowl and cream jug, each of oblong form with demi-fluted body, the teapot applied with ebon handle and finial, (c.1026g). (3)
€ 500 - 800



109 A FINE AMERICAN CUT GLASS AND SILVER OVERLAY DECANTER AND STOPPER BY GORHAM,
1892, with faceted stopper applied with silver flower heads and foliage, the globular body with silver collar and facet cut neck, with hobnail cut body. 34cm high
€ 400 - 700



110 AN AMERICAN STERLING STANDARD SILVER WINE COOLER,
by Maynard and Potter, of circular form, with fold-over pierced scrollwork rim and plain ovoid body, waisted stem and shaped dome foot, engraved with initials "GBH", (c.1088g). 23cm high, 30cm diameter
€ 500 - 800



- 111 A LARGE COLLECTION OF MISCELLANEOUS SILVER ITEMS, including a photograph frame, pin tray, hammered card case etc.

€ 250 - 300



- 112 AN ASSORTED COLLECTION OF SILVER AND WHITE METAL, including a German .800 standard pin tray of shaped oval form, a sterling wine taster stamped 'Goff', a miniature silver handled child's toothbrush, novelty spoons etc.

€ 150 - 250



- 113 A COLLECTION OF SILVER CONDIMENTS and other miscellaneous silver items

€ 120 - 180



- 114 A SMALL COLLECTION OF SILVER MINIATURE FURNITURE, comprising a trough, a garden bench and a side chair; together with an oak two handle tub with plated mounts. (4)

€ 60 - 100



- 115 A COLLECTION OF SILVER, including photograph frames, circular pin trays, a glass and silver mounted inkwell etc.

€ 200 - 400



- 116 A RUSSIAN SILVER APPLE CORER AND MARROW SCOOP, 19th century, each engraved with floral reserves. 15cm long; together with a miscellaneous collection of white metal items and trinkets

€ 120 - 180



- 117 A LARGE COLLECTION OF ASSORTED SILVER CUTLERY, mainly Georgian examples, various dates and makers (c.1555g)

€ 300 - 400



- 118 A COLLECTION OF IRISH GEORGIAN FLATWARE, mainly Georgian spoons of various dates and makers; together with a Georgian bright cut sugar tongs by Hester Bateman; an Edwardian silver tennis trophy etc. (c.466g all in)

€ 150 - 200



- 119 A MISCELLANEOUS COLLECTION OF SILVER CONDIMENTS, including:
- a cased pair of napkin rings;
- trencher salts;
- pillar salts, etc. (c.746g all in), some with blue glass liners

€ 200 - 300



120 A SILVER TREASURY INKSTAND,
Chester 1929, (c.650g). 25cm wide

€ 250 - 350



121 AN ART DECO SILVER SHAPED
MACHINED DRESSING TABLE
TRAY,
Sheffield 1933, mark of Walker & Hall,
(c.497g). 29.5cm wide

€ 200 - 300



122 A PAIR OF SMALL BIRMINGHAM
SILVER PEPPER POTS
and another with Celtic decoration;
and a pair of triangular candle holders, (c.186g)

€ 20 - 40



123 A SET OF TWELVE SILVER AND
MOTHER OF PEARL HANDLE
FRUIT KNIVES AND FORKS,
Sheffield 1947, with Irish import marks

€ 50 - 100



124 A CASED SET OF SIX SILVER
KINGS PATTERN TEASPOONS,
Birmingham 1981, with Irish import marks,
(c.93g)

€ 40 - 60



125 AN IRISH GEORGE III SILVER
CREAM JUG,
Dublin 1814, mark of ILB, in the Neo-Classical
taste, with beaded rim and semi-fluted
body, crested, (c.217g)

€ 150 - 250



126 A COLLECTION OF SILVER
DISHES,
comprising:
- An Irish commemorative silver strawberry
dish, Dublin 1966, mark of Royal Irish Silver
Ltd, with commemorative silver coin to centre;
- Another smaller, similar dish, Dublin 1966,
mark of Royal Irish Silver Ltd, also with commemorative silver coin to centre;
- Etc. [see website for more detail]

€ 250 - 350



127 A COLLECTION OF SILVER
TRINKET BOXES,
including:
- a 19th century double sovereign case;
- a heart shaped pendant vesta box;
- a hammered silver vesta case with gilded
interior;
- an Edwardian embossed silver snuff box;
- an engraved rectangular vesta case;
- etc. [see website for more detail]

€ 120 - 180



128 A COLLECTION OF SILVER
TABLEWARE,
comprising:
- An Irish commemorative silver sauce
boat, Dublin 1966, with wavy out turned
rim and applied figural serpent handle,
with plain body and raised on three hoof
capped feet;
- An Irish silver strainer, Dublin 1967;
- A pair of silver bon bon dishes, Dublin
1954;
- etc. [see website for more detail]

€ 250 - 350



- 129 A COLLECTION OF SILVER AND OTHER CURIOSITIES, including:
 - a silver gilt and enamelled card case, London import marks, the hinged lid decorated with a cartoon by HM. Bateman, engine turned to the reverse, gilt interior. 8 x 5cm;
 - a plain silver cigarette case, Birmingham 1918, mark of Henry Clifford Davis, with gilt interior;
 - etc. [See website for more detail]

€ 50 - 80



- 130 AN INTERESTING COLLECTION OF SILVER AND OTHER ITEMS, including menu holders, tea and coffee spoons, sugar tongs, etc. (c.295g silver items all in)

€ 30 - 40



- 131 A COLLECTION OF SILVER TABLEWARE, comprising:
 - a Victorian five bar silver toast rack, London 1898, each bar cast in the shape of a letter to spell "TOAST"
 - an Edwardian five bar silver toast rack, London 1906 with raised foliated loop handle
 - Etc. . [See website for more detail]

€ 300 - 500



- 132 A SET OF SIX TAPER HANDLE SILVER TEASPOONS, Sheffield 1947, mark of B Bros; together a plain Georgian silver sugar tong, and another smaller silver sugar tong, Sheffield 1893, mark of Atkin Brothers, (c.186g)

€ 100 - 150



- 133 A COLLECTION OF SILVER HANDLED BUTTER KNIVES, comprising:
 - Five kings pattern handled butter knives, Sheffield 1947, mark of Emile Viner, with stainless steel blades;
 - A plain taper handled butter knife, Sheffield 1952,
 - And two other butter knives, one with stainless steel blade. (8)

€ 50 - 80



- 134 A CONTINENTAL WHITE METAL BREAD BASKET, c.1900, of pierced oval form. 24cm wide; together with an American pierced circular dish, stamped Birks Sterling, engraved with initials. 23cm diameter; and a small collection

€ 150 - 250



- 135 AN EARLY 19TH CENTURY PLATED SILVER GILT CHARGER, of shaped circular form, with reeded rim enclosing an engraved coat of arms. 29cm wide

€ 50 - 100



- 136 A VINTAGE GUCCI CIGARETTE LIGHTER, in original case; together with a set of four silver plated and enamel travelling beakers in leather case and a pewter and brass casket and cover with Greek key banding. (3)

€ 80 - 120



- 137 A CONTINENTAL SILVER PLATED CIRCULAR PUNCH BOWL. 26cm diameter; together with a miscellaneous collection

€ 80 - 120



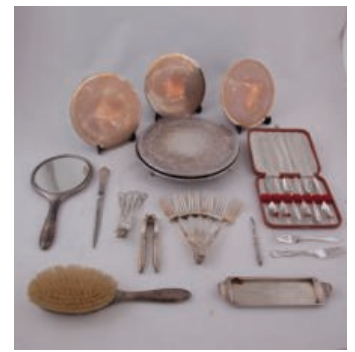
- 138 AN ANGLO INDIAN WHITE METAL BACHELOR'S TEAPOT, the lid with elephant finial, the body all over chased with wild animals in a tropical forest, applied with snake handle and rattan covering. 14cm high

€ 100 - 150



- 139 A COLLECTION OF THREE EDWARDIAN SILVER AND SILVER PLATED CHAIN MAIL PURSES

€ 60 - 100



- 140 A COLLECTION OF CASED SILVER PLATED ITEMS, including a tortoiseshell backed dressing table mirror and brush, dinner forks, pastry forks, place mats, etc.

€ 30 - 50



- 141 A PERSIAN WHITE METAL STEM CUP, with stylised lotus bowl and lobed fold over rim, engraved to the exterior with individual figural panels above waisted stem and domed circular foot. 24cm high, 19.5cm diameter

€ 250 - 350



- 142 A PAIR OF CHINESE WHITE METAL CYLINDRICAL SALTS, chased and engraved with serpents and other Chinese motifs; together with a pair of similar Chinese open white metal salts with blue glass liners; and a similar white metal mustard pot, (5)

€ 50 - 80



- 143 A MISCELLANEOUS COLLECTION OF SILVER PLATED TABLEWARE, including an ebon handled teapot, a roll-top sugar bowl, toast rack, cooler, card trays, etc.

€ 10 - 20



- 144 A LARGE MISCELLANEOUS COLLECTION OF SILVER PLATED TRAYS OF VARIOUS SIZES and a plated engraved swing handled basket

€ 20 - 40



- 145 A LARGE MISCELLANEOUS COLLECTION OF SILVER PLATED FLATWARE, including bone handled fish knives and forks, novelty teaspoons, EPNS kings pattern teaspoons by Newbridge, etc.

€ 20 - 30



- 146 A COLLECTION OF SILVER PLATED AND EPNS KITCHENWARE, including a saucepan with ebon handle, a hammered silver plated twin handled pot, an entre dish, etc.

€ 80 - 120



- 147 A COLLECTION OF SILVER PLATED ITEMS, including a 19th century oak lined serving tray with raised gallery, 46cm wide; an old Sheffield plated teapot of oval form, engraved with crest to one side and coat of arms verso, 30cm long; a good Stilton scoop; a small embossed tray etc. (8)

€ 120 - 180



- 148 A MIXED COLLECTION OF SILVER AND SILVER PLATED ITEMS, including a set of six *niello* work napkin rings of oval shape, decanter labels, vesta case, a tortoiseshell and silver inlaid pill box, novelty spoons and a novelty cork screw modelled as a key etc.

€ 100 - 150



- 149 A LARGE COLLECTION OF SILVER PLATED WARE, including an EPNS copy of the Ardagh Chalice, a large floral moulded circular dish, a rouge marble column candlestick, toast racks etc.

€ 200 - 300



- 150 A CASED SET OF SIX EPNS LOBSTER PICKS BY MAPPIN & WEBB, a cased set of Georgian silver teaspoons, six white metal teaspoons, six Edwardian novelty coffee spoons with bean terminals and a cased set of six fiddle terminal coffee spoons. (5)

€ 150 - 250



- 151 A 19TH CENTURY OAK AND ELECTROPLATED SILVER MOUNTED BEER JUG, of coopered construction with tapering slated panels and four binding rings, with 'c'-scroll handle and hinged cover. 21cm high

€ 60 - 100



- 152 A CASED ELECTROPLATED PASTRY SERVICE comprising pastry forks (12) and cake slice; together with another similar set of teaspoons (12) and cake slice; and three cased sets of electroplated and novelty teaspoons

€ 20 - 40



- 153 A MISCELLANEOUS COLLECTION OF SILVER PLATED ITEMS INCLUDING an American wine coaster; a pair of salt cellars; two syphon holders; two silver plate mounted table mats, etc.

€ 40 - 60



- 154 A GOOD COLLECTION OF SILVER PLATED ITEMS, including an oval wirework swing handle basket, an Art Deco tri-handle centre dish, old Sheffield plate wine funnel, Reed and Barton centre bowl, marrow bone holders, miniature condiments etc.

€ 150 - 200



- 155 AN ART DECO NOVELTY TEA POT, in the style of Christopher Dresser, of triangular form, with ebon handle; together with a silver plated cocktail shaker with rooster terminal and an Art Deco set of EPNS grapefruit spoons and strainer, in fitted case. (3)

€ 100 - 150



156 A MISCELLANEOUS COLLECTION OF SILVER AND SILVER PLATED ITEMS, including salver, stands, sugar tongs, a white metal bell in fitted case, etc. (c.465g silver items all in)
€ 80 - 120



157 A THREE PIECE CARVING SET WITH ANTLER STYLE HANDLES
€ 30 - 50



158 A 1917-1921 'COGADH NA SAOIRSE' WAR OF INDEPENDENCE MINIATURE BRONZE SERVICE MEDAL WITH 'COMRAC' BAR, on black and tan ribbon with decorated clasp, the 'Comrac' bar engraved verso with maker's name 'Quinn'
€ 300 - 500

159 A LARGE COPPER SCALES DISH, supported on a chain with brass mounts. 51.5cm diameter
€ 30 - 50



160 AN AQUAMARINE AND SEED PEARL NECKLACE
A pendant on chain, set with two round and two oval-cut aquamarines and seed pearls, mounted in 9K gold, length approximately 39cm
€ 600 - 800



161 A LADIES GOLD PLATED GUCCI WRISTWATCH, with black dial embellished with emblem and marked 'Gucci', the plated bezel engraved with Roman numerals, with stamped black leather strap
€ 100 - 150



162 AN AMBER AND GOLD NECKLACE, together with an amber ring. A 14 carat gold and amber pendant of naturalistic design, circular scrolling vines set to centre with three oval amber cabochons, suspended from a 14 carat gold chain, length approx. 45cm; together with a ring of similar design, ring size M
€ 300 - 400



163 A GROUP OF THREE BROOCHES
An Edwardian diamond and 14 carat gold bar brooch, set to front with a trio of graduated circular-cut diamonds, mounted in 14 carat gold, together with a 9 carat gold and amethyst bar brooch, and a 9 carat gold horseshoe bar brooch
€ 300 - 500



164 A DIAMOND AND RUBY HALF CIRCLE ETERNITY RING
Set to front with alternating princess-cut diamonds and square step-cut rubies, mounted in 18 carat gold, diamonds approx. 0.36 carat total, ring size P
€ 400 - 600



165 A 9K GOLD FULL HUNTER GENTLEMAN'S POCKET WATCH with a 9K medal
With engine turned cover centred with a vacant cartouche, opening to reveal white enamel dial with Arabic numerals and seconds subsidiary, marked Swiss made, surmounted with suspension ring and winder
€ 200 - 400



166 AN 18 CARAT GOLD LADY'S OPENFACE POCKET WATCH
Suspended from a 9 carat gold fancy-link chain (weight of chain approx. 30 grams)
€ 400 - 600



167 A MISCELLANEOUS COLLECTION OF BROOCHES
Including a cameo brooch, a sapphire and diamond circular brooch, a Celtic style brooch and a yellow metal brooch with cabochon style inset
€ 400 - 600



168 AN ALBERT LINK CHAIN
An albert link chain mounted in 18K, length approximately 46cm
€ 1,000 - 1,500



169 A 9 CARAT LADY'S WIND WRISTWATCH BY OMEGA
With gilt metal hands and a ring of Arabic numerals; movement signed Omega 17 jewels, numbered 18783559, on a replacement lizard strap
€ 300 - 500



170 A COLLECTION OF THREE SETS OF GOLD CUFFLINKS
Two pairs mounted in 9 carat gold, one pair yellow metal unmarked, approximately 27grams total
€ 300 - 400



171 A GOLD PLATED HINGED BANGLE,
inscriptions "E.R.O.B." on front and "FOB" inside
€ 200 - 300



173 A SILVER BRACELET
A fancy-link bracelet, mounted in silver, signed Gucci, length approximately 21.5cm
€ 50 - 90



174 A SILVER FULL HUNTER POCKET WATCH, CIRCA 1914
The circular engine turned cover centred with an engraved cartouche, opening to reveal a glazed white enamel dial with Roman numeral with seconds subsidiary, surmounted by suspension ring and associated chain

€ 80 - 120

175 A 9 CARAT YELLOW GOLD KEYLESS WIND HALF HUNTER POCKET WATCH, marked "Hopkins & Hopkins Dublin" 17 jewels adjusted, white dial with Roman numerals, subsidiary dial at 6 for constant seconds with Arabic numerals, movement signed "A.W.W.Co. Waltham, Mass" numbered 13007921, Engraved "Presented to Louis H. Victory, by the staff of the Leinster Leader Oct. 1907", contained within original fitted case "Hopkins & Hopkins"

€ 300 - 500

176 A CASED SET OF FOUR 9K YELLOW GOLD SHIRT BUTTONS & A PAIR OF CUFFLINKS

€ 30 - 50



177 A CHALCEDONY FOB SEAL PENDANT
Modelled as an openwork, inset with a round white chalcedony plaque with a masonic symbol, mounted in 9 carat gold, length approximately 4.2cm

€ 300 - 500

178 A SHELL CAMEO PENDANT/ BROOCH
Carved to depict a noble lady, mounted in 14 carat gold, length approximately 5.4cm

€ 300 - 500

179 A SAPPHIRE AND DIAMOND RING
Composed of a trio of rectangular-cut sapphires to a surround of twelve round brilliant-cut diamonds, mounted in 18 carat gold, diamonds approx. total 0.84 carat total, ring size Q

€ 1,000 - 1,500



180 JOSEPH SEMPILL (FL.1867-1875)
Rossendale of Burrow, Charles A. Reny Master
Oil on canvas, 44 x 68cm
Signed 'J. Sempill, Belfast'

€ 1,500 - 2,500



180A JOHN BUCKNELL RUSSELL (C.1819-1893)
Three Sea Trout on a Rocky Ledge
Oil on canvas, 56 x 76cm
Signed 'J.B. Russell'

€ 600 - 800



181 AFTER GASTON LEROUX
 'Jeune Fille Arabe', Rebecca going to the well
 Bronze, 32cm high
 Signed 'G. Leroux'
 € 800 - 1,200



182 A GROUP OF THREE FRENCH MINIATURE BRONZE FIGURES,
 modelled as two young boys and a girl, each in standing position,
 dressed in continental attire, on marble plinth bases, signed. Approx.
 13cm high
 € 100 - 150



183 A 19TH CENTURY BRASS AND JASPERWARE MOUNTED DESK SET,
 by James Howell, Regent Street, London, comprising a stationary cas-
 ket, an ink blotter, a balance scales, circular inkwell and candlesticks,
 each applied with rope twist mounts and engraved anthemions, set
 with blue jasperware roundels. (6)
 € 400 - 600



184 A 19TH CENTURY BRASS AND PIETRA DURA MOUNTED DESK SET,
 comprising a pair of circular desk candlesticks, an oval pen tray and a
 cut glass inkwell and stand, each with applied rope twist borders and
 set with floral inlaid pietra dura roundels. (4)
 € 250 - 350



185 A FRENCH 19TH CENTURY EBONISED AND BRASS MOUNTED CASED CARRIAGE CLOCK, by Martin, Baskett & Co., Paris, with striking movement, engraved brass face and fitted brass swing handle, pull-up bevelled glass front panel, raised on rectangular platform base and short bracket feet. 16 x 14 x 22cm high
€ 600 - 1,000



186 A LATE 19TH CENTURY FRENCH RED BOULLE CASED MANTLE CLOCK, in the Louis XIV taste, with applied cast brass mounts, the brass face with blue and white enamel numerals by Aubert et Klafthenberger. 30cm high
€ 300 - 500

187 A FRENCH EMPIRE STYLE BRONZE MANTEL CLOCK, the circular dial raised on winged lions and surmounted by Roman military weapons, the whole supported on a plinth with frieze depicting blacksmiths making weapons for the Roman army, raised on acanthus wrapped scroll supports. 42.5cm high
€ 400 - 600

188 A FRENCH GILT METAL, BRONZE AND MARBLE FIGURAL MANTLE CLOCK, the clock surmounted by cast figure of a musical putto playing the flute, above marble casing containing a brass and white enamel dial within beaded border and cartouche, supported on a masked scroll-work base. 53cm high x 27cm wide
€ 600 - 1,000



187

- 189 A 19TH CENTURY COBALT BLUE AND GILDED MEISSEN DISH, decorated with groups of flowers and fruit in relief. 24cm wide diameter; together with another similar Meissen dish, etc. (7)

€ 150 - 250



- 190 A FRENCH GILTMETAL AND PORCELAIN MOUNTED STANDISH, of shaped rectangular form, with raised inkwells and covers and centred with a floral painted porcelain panel, within pierced scrollwork borders. 32cm wide

€ 400 - 500



- 191 A PAIR OF FRENCH GILT METAL AND ENAMEL CASSOLETTES, each with domed covers and pointed finials, over an ovoid body applied with twin griffin handles, on waist and block column and stepped platform base. 33cm high

€ 500 - 600

- 192 A FRENCH EMPIRE STYLE TEMPLE CLOCK,
the ebonised timber case with ormolu mounts, with striking movement, having a silvered dial within an ormolu foliate cast border flanked by four turned columns and raised on platform base on bun feet. 39cm high
- € 1,000 - 1,500
-



- 193 A LATE 19TH CENTURY CONTINENTAL GILTWOOD AND GILDED METAL CIRCULAR DOME TOP SINGING BIRD AUTOMATON,
with single exotic bird and raised on an octagonal platform base with moulded decoration. 50cm high
- € 1,500 - 2,000
-





194 A PAIR OF CHINESE CARVED BAMBOO BRUSH POTS, Qing, 19th century, each carved with a continuous scene of figures, willow and pagodas. 16.5cm high
€ 600 - 1,000



195 A CHINESE CARVED BAMBOO BRUSH POT, 19th century, of cylindrical form, decorated with figures travelling by pagodas and woodland. 12.5cm high
€ 300 - 500



196 A CHINESE BLUE AND WHITE PORCELAIN JARLET, late Ming Dynasty, 16th/17th century, of squat globular form with waisted neck and flared rim, decorated with a row of stiff leaves above ducks and aquatic plants, spurious Cheng Hua mark to base. 9cm high
€ 100 - 200



197 A CHINESE FAMILLE VERTE BEAKER VASE, 19th century, of cylindrical form with everted rim, painted and enamelled with young scholars reading in a garden landscape
€ 500 - 700



198 A PAIR OF ORIENTAL BRONZE VASES, of baluster shape, engraved with foliate scrolls and cast oval reserves filled with aquatic plants; together with a Chinese bronze gourd and cover and a Tibetan phurba dagger. (4)
€ 150 - 250



199 A PAIR OF CHINESE FAMILLE VERTE PORCELAIN AND ORMOLU MOUNTED VASES, 19th century, each of baluster form with flared gilt edged rim and waisted neck applied with stylised side handles, the bodies painted and enamelled with a ceremonial court scene on a leaf cast ormolu base. 66cm high
€ 1,000 - 1,500



200 A CHINESE EXPORT PORCELAIN ROSE BOWL, 18th century, the exterior with raised "famille rose" style decoration reserved against a white ground with gilt highlights, the interior decorated in blue and white tones, with trellis banding to the rim and simple foliate decoration to centre. 26.5cm diameter
€ 300 - 500



201 A CHINESE POLYCHROME PORCELAIN JAR AND COVER, 19th century, the domed cover with painted finial and body with clobbered decoration, painted and enamelled with panels of birds, rocks and flowering prunus. c.39cm high
€ 200 - 300



202 A 20TH CENTURY CHINESE PORCELAIN CENTRE BOWL IN THE FORM OF A FLOWER HEAD, the shaped wavy out turned rim decorated with a band of blue and white floral designs, over shallow ribbed sides in celadon green, 29cm diameter

€ 50 - 80



204 A CHINESE CARVED IVORY FIGURE OF A SEATED IMMORTAL, 19th century. 11cm high

€ 200 - 300

203 NO LOT



205 A JAPANESE BRONZE BALUSTER VASE, Meiji Period (1868-1912), with flared rim and elongated neck, applied with twin side handles,; together with another smaller example of similar period. 47cm high (2)

€ 400 - 600



206 A CHINESE CRACKLEWARE DISH, in Cantonese style, of shallow circular form the interior decorated in green, blue and yellow enamels depicting warriors on horseback, within a narrow trellis border. 40cm diameter

€ 50 - 100



207 A CHINESE CANTON ENAMEL HORS D'OEUVRE DISH of circular form, the centre dish painted with scholars in an open landscape encircled by eight segments, each formed as a shallow fan shaped dish individually decorated. 43cm diameter

€ 400 - 600

- 208 AN EARLY 19TH CENTURY INLAID MAHOGANY LONGCASE CLOCK,
the arch top hood with moulded scroll pediment above a blind fret frieze, the arched door enclosing a painted phases of the moon above a brass face with inked steel chapter ring, seconds dial and date, by Feathestone Newcastle, the case with quarter reeded pilasters and raised on ogee bracket feet. 220cm high

€ 2,500 - 3,500



- 209 AFTER FELIX MAURICE CHARPENTIER
L'improvisateur, Pan playing the flute
Bronze, 60cm high
Signed to the base and stamped with foundry mark of Colin and Cie,
Paris

€ 700 - 1,000





210 ATTRIBUTED TO EUGÈNE JOSEPH VERBOECKHOVEN
(BELGIAN, 1799-1881)
Sheep and Lambs in a Pastoral Landscape
Oil on panel, 24 x 34cm

€ 2,500 - 3,500



211 A WILLIAM IV MAHOGANY CIRCULAR BREAKFAST
TABLE,
the top with radial veneers and carved gadroon rim, raised on hexagonal tapering centre pillar and triangular platform base on carved scroll feet. 126cm diameter

€ 1,500 - 2,000



212 A GEORGE III INLAID MAHOGANY BREAKFRONT BOOKCASE,
the moulded cornice above four astragal glazed doors, central pull out deep drawer with false fascia,
flanked by six short drawers and cupboards, the doors decorated with oval boxwood banding. 285cm
wide

€ 4,000 - 6,000



213 A VICTORIAN CARVED GOLDEN OAK CASED ADMIRAL FITZROY BAROMETER, surmounted with leaf scroll decoration. 120cm high

€ 400 - 600



214 A 19TH CENTURY MAHOGANY HAT AND COAT STAND, with ball finial atop a plain turned column with upturned branches and raised on urn and reeded tripod base with brass square toe caps and castors. 188cm high

€ 400 - 600



215 AN EARLY 19TH CENTURY INLAID MAHOGANY SHAPED RECTANGULAR TEA TABLE, the folding top above a plain frieze with centre tablet and raised on turned centre pillar quadruped platform base with brass claw feet. 91.5 x 45cm

€ 600 - 800



216 A VICTORIAN MAHOGANY RECTANGULAR BUTLER'S TRAY, on stand, with raised sides with integral handles. 63 x 82cm

€ 500 - 700



217 A 19TH CENTURY MAHOGANY SERPENTINE SIDE/ CONSOLE TABLE, in the George III taste, the plain top raised above three cockbeaded frieze drawers, the sides with faux drawers, all with brass drop handles and raised on two shaped column front supports. 179cm wide x 85cm deep

€ 800 - 1,200



218 A GEORGE IV ROSEWOOD CONSOLE TABLE, the black marble top raised on leaf carved scroll legs with claw feet and raised above a concave front platform base decorated with beaded banding. 130cm wide x 63cm deep

€ 1,500 - 2,000



219 A GEORGE III INLAID MAHOGANY RECTANGULAR SIDE TABLE, the plain bowfront top raised above a centre tablet with oval satinwood patera, the frieze decorated with rosewood banding and raised on square tapering banded legs. 184cm long x 68cm deep

€ 1,000 - 1,500



220 A GEORGE IV MAHOGANY RECTANGULAR CANTERBURY, with slatted compartments, frieze drawer and raised on turned tapering legs with casters
€ 200 - 300



221 A WILLIAM IV MAHOGANY CIRCULAR JARDINIERE STAND, with gallery top and centre well with cover, raised on turned centre pillar with lotus carved collar on a triangular base with bun feet. 40cm diameter x 79cm tall
€ 600 - 1,000



222 A GILT-WOOD AND GESSO AURICULAR PICTURE FRAME, 19th century, with central quiver cresting, now with a mirror plate. 85 x 69cm
€ 100 - 200



223 A LOUIS XV CARVED BEECHWOOD FRAMED FAUTEUIL, the upholstered back, seat and armrests covered in yellow silk, raised on panelled cabriole legs.
€ 300 - 500



224 A 19TH CENTURY WALNUT FRAMED LOOP BACK BERGERE ARMCHAIR, the crest rail and seat fascia carved with incised bellflower decoration, having loose squab cushion and raised on sabre legs
€ 200 - 300



225 A GEORGIAN STYLE MAHOGANY RECTANGULAR STOOL, the drop in padded seat raised on a shell and rosette carved apron on shell capped cabriole legs and carved triform feet. 64 x 42cm
€ 200 - 300



226 A PAIR OF DUTCH MARQUETRY INLAID RAIL BACK DINING CHAIRS, early 19th century, each with bowed top rail inlaid with floral and foliate trails, upholstered seat on squared tapering legs
€ 300 - 500



227 A DUTCH 19TH CENTURY EBONISED TIMBER, TORTOISESHELL AND BRASS WALL MIRROR, with surmounted cast and pierced scroll and foliate top, the bevelled plate within a repousse foliate swept back border. 155 x 90cm
€ 1,500 - 2,500



228 A SET OF FOUR FRENCH PROVINCIAL BEECH CARVED SALON CHAIRS, each with shaped floral cresting above upholstered and padded seat, with carved apron, and raised on cabriole legs. (4)
€ 400 - 600



229 A REGENCY GILTWOOD CONVEX WALL MIRROR, the ropework frame surmounted with a crouching eagle on rockwork, the base decorated with a scallop shell and foliate finial. 104 x 50cm
€ 300 - 500



230 A SET OF TWELVE GEORGE IV STYLE MAHOGANY
FRAMED DINING CHAIRS,
with pierced undulating ladder backs, padded seats covered in morocco
faux hide and raised on chamfered square supports

€ 1,200 - 1,500



231 A LARGE VICTORIAN MAHOGANY EXTENDING DINING
TABLE,
with thumb moulded rim and raised on heavy turned tapering legs
and brass castors (four additional leaves). 454cm long x 161cm wide

€ 3,000 - 4,000



- 232 A SET OF TWELVE GEORGE III STYLE MAHOGANY FRAMED DINING CHAIRS, the moulded rims with undulating crest rail above a pierced vase splat, the padded seats covered in morocco faux hide and raised on plain cabriole legs and pad feet (10 single and 2 elbow chairs)

€ 2,000 - 3,000



- 233 A VICTORIAN MAHOGANY RECTANGULAR EXTENDING DINING TABLE, in seven sections, with bold reeded rim and raised on turned tapering legs (four additional leaves). 542cm long x 152cm wide

€ 4,000 - 6,000



- 234 A 19TH CENTURY DRAWING ROOM SUITE,
comprising five chairs and 2 small carvers a ladies and gentleman's
chair , and a two seat settee. The ebon frames inlaid with walnut
- € 1000 - 1500
-



- 235 A FRENCH EBONISED AND GILT METAL MOUNTED
NINE-PIECE DRAWING ROOM SUITE,
19th century, comprising of a long three-seat settee, four open arm-
chairs and four single chairs, each covered in button back burgundy
damask, with arched crested back and serpentine shaped seats on
short cabriole legs and castors. The settee 170cm wide
- € 1,500 - 2,000
-



- 237 A VICTORIAN SIMULATED ROSEWOOD CONSOLE
TABLE,
with brass gallery rail, above a yellow veined marble top, the frieze with
ebonised flower head banding, centred with a cartouche bearing ini-
tials 'RR', the mirrored back panel flanked by reeded pilasters, the four
legs reeded and tapering with cross stretcher and raised on turned
legs. 106 x 36 x 97cm high
- € 1,200 - 1,800
-



238 AN EARLY 19TH CENTURY INLAID MAHOGANY CHEST ON CHEST, with moulded dentil cornice above three short and three long drawers flanked by fluted pilasters on a base fitted with a pull out brushing slide and three long drawers with brass drop handles and decorated with satinwood crossbanding, raised on large ogee bracket feet. 112cm wide x 184cm high

€ 1,500 - 2,000



239 A LARGE MAHOGANY FRAMED RECTANGULAR UPHOLSTERED STOOL, the velvet covered seat raised on blind fret square legs. 123 x 85cm
€ 400 - 600



240 A LARGE MAHOGANY FRAMED OBLONG RECTANGULAR UPHOLSTERED STOOL, the cotton covered seat raised on blind fret square legs. 59 x 91cm
€ 300 - 400



241 A MAHOGANY FRAMED RECTANGULAR STOOL with upholstered seat raised on blind fret square legs. 59 x 91cm
€ 250 - 350



242 A WILLIAM IV ROSEWOOD RECTANGULAR STOOL with padded seat covered in gold velvet and raised on scrolled 'X' supports. 37 x 54cm
€ 300 - 400



243 GEORGE GREGORY (1849-1963)
Fishing in a stormy seascape
Oil on canvas, 36.5 x 51 cm
Signed and dated 1878
€ 800 - 1,200



244 A FRENCH GILTWOOD FRAMED UPHOLSTERED
SALON SUITE,
in the Louis Quinze taste, comprising a bowfront two seater canape
and a set of four oval back armchairs, the crest rails with carved foliage
and with oak leaf banding, raised on turned tapering fluted legs. Canape,
140cm wide; Armchairs, 61cm wide
€ 2,500 - 3,500



245

245 A 19TH CENTURY LARGE BRASS RECTANGULAR TRIVET, raised on turned legs. 71 x 40.5 x 31cm high
€ 300 - 500



247 A LATE 19TH CENTURY MAHOGANY CIRCULAR PIERCED URN SHAPED PLANT HOLDER with brass swing handle and raised on triangular platform base with block feet. 32cm diameter, 51.5cm high
€ 200 - 400

246 A LARGE DUBLIN MADE BRASS WEIGHING SCALES, by J. Newman, complete with five weights and raised on a mahogany base with moulded rim. 87cm high
€ 200 - 300



248 A WROUGHT IRON CIRCULAR PLANT STAND with applied polychrome foliate decoration on tripod supports. 72cm high; together with rosewood rectangular occasional table (from a nest). 51 x 35.5cm. (2)
€ 100 - 200



249 A PAIR OF CHINESE CARVED FRUITWOOD SHAPED CIRCULAR PLANT STANDS, with inset marble tops above pierced foliate aprons and raised on four legs with stretchers. 42cm diameter, 60cm high
€ 400 - 600



250 A MAHOGANY PILLAR PLANT STAND with circular top on carved baluster column raised on tripod supports. 122cm high; together with a slightly taller similar torchère. 145cm high. (2)
€ 200 - 300



251 AN EARLY VICTORIAN ROSEWOOD DAVENPORT, c.1840 with slope front tooled leather writing surface, above recessed knee hole space and side cupboards on cabriole supports and turned feet. 84cm high x 55.5cm wide x 61cm deep
€ 800 - 1000



252 A PAIR OF EARLY VICTORIAN MINATURE MAHOGANY and beechwood upholstered chairs.
€ 800 - 1,200

253 AN EDWARDIAN INLAID MAHOGANY TALL MUSIC CABINET, with fitted drawers and cupboard
€ 600 - 800

254 AN UNUSUAL STAINED WOOD RECTANGULAR WALL MIRROR, with an open carved foliate frame
€ 800 - 1,200



254



256 A 19TH CENTURY MAHOGANY
RECTANGULAR CONSOLE
TABLE,
in the Empire taste, the black marble top
with reeded rim raised on slender scroll
legs and brass paw feet on platform end
supports. 136cm long x 48cm deep

€ 1,000 - 1,500



257 A PAIR OF 19TH CENTURY
MAHOGANY SIDE BOARD
PEDESTALS,
the faux black limestone tops raised on
single panel fielded doors, with integrated
carved paw feet and raised on platform
base. 58.5cm wide x 63cm deep x 86cm
high

€ 300 - 500



258 JOHN FREDERICK HERRING SENIOR (1795-1865)
A Busy Farmyard Scene with Horses, Pigs and Poultry
Oil on canvas, 35 x 46cm
Signed and dated 1861
€ 3,000 - 5,000



260 A VICTORIAN INLAID MAHOGANY CIRCULAR
BREAKFAST TABLE,
the top with radial veneers and centred by a star, having beaded rim
and raised on hexagonal baluster centre pillar and tripod base on paw
feet. 138cm diameter
€ 2,000 - 3,000



261 ALEXANDER MARK ROSSI (1840-1916)

Only a Penny
Oil on canvas, 69 x 51 cm
Signed

Exhibited: Glasgow Institute of the Fine Arts, 1880, No.285.

€ 2,000 - 3,000



262 A 19TH CENTURY SHERATON INLAID MAHOGANY
DOUBLE SIDED BOOKCASE,
with three graduated tiers, the ends decorated with inlay of ribbons,
bellflowers and oval panels, raised on square tapering legs. 100cm
long x 45cm deep x 106cm high

€ 1,500 - 2,000



263 A GEORGE III MAHOGANY RECTANGULAR SIDE TABLE,
the moulded top above a plain frieze centred by a carved shell and raised on bold shell carved cabriole legs on paw feet. 147 x 67cm

€ 3,000 - 5,000



264 AN ANCIENT PERUVIAN CHAVIN POTTERY MASK VESSEL, formed as head surmounted by a flared spout, with stylised facial features and fanged teeth. 14cm high

Provenance: Purchased from an antique dealer in Connecticut (USA) c.1973 and believed to have been part of the collection from an anthropologist in Yale University.

€ 300 - 500



266

265 AN ANCIENT PRE-COLOMBIAN FIGURAL WIND VESSEL, Chancay culture, modelled as an idol standing with outstretched arms, in pale cream terracotta with dark pigment stripes. 13cm high

Provenance: Purchased from an antique dealer in Connecticut (USA) c.1973 and believed to have been part of the collection from an anthropologist in Yale University.

€ 250 - 400



265

266 A PERUVIAN MOCHICA POTTERY FIGURAL VESSEL, in pale red terracotta, formed as a man carrying a flared vessel on his back balanced by a headstrap. 10.5cm high; together with another ancient pottery figure of a standing deity, wearing a splayed headdress and hands over his chest. 9cm high (2)

Provenance: Purchased from an antique dealer in Connecticut (USA) c.1973 and believed to have been part of the collection from an anthropologist in Yale University.

€ 200 - 300



266



267 A COLLECTION OF FOUR SOUTH AMERICAN ANCIENT ARTEFACTS, comprising a black glazed pre-Columbian vessel. 7.5cm high; a Mayan ear spool. 5cm wide; and two small terracotta heads. (4)

Provenance: Purchased from an antique dealer in Connecticut (USA) c.1973 and believed to have been part of the collection from an anthropologist in Yale University.

€ 150 - 200



269

268 A 19TH CENTURY MALACA AND SILVER PLATED CEREMONIAL STAFF, surmounted with a lion and coronet finial and chased with scrolling leaves. 140cm high

€ 100 - 200

269 A ROMAN PERIOD CYPRIOT POTTERY OIL LAMP. 7.75cm long; together with a small Roman period oil lamp, with 'pinched' spout. 7cm long; and a small Graeco-Phoenician ewer with glazed interior. 9.5cm high (3)

€ 150 - 250



270 AN ANCIENT CYPRIOT POTTERY WINE JUG, Graeco-Phoenician period (7th-6th century B.C.), the spherical body with narrow waisted neck and raised strap handle decorated with multiple concentric motifs in dark and umber pigments. 18.5cm high
€ 400 - 600



271 AN ANCIENT CYPRIOT TWO HANDLE DISH, Graeco-Phoenician period (7th-6th century B.C.), of shallow circular form, applied with small side handles, decorated with concentric bands and triangular panels filled with geometric ornament. 22.5cm diameter x 26.5cm across handles
€ 500 - 800



272 AN ANCIENT CYPRIOT POTTERY AMPHORA, Graeco-Phoenician period (7th-6th century B.C.), of typical shape with raised loop side handles, waisted neck and lipped rim, decorated with encircled bands above a row of x-shaped motifs in dark and umber tones. 20.5cm high
€ 600 - 1,000



273 AN ANCIENT CYPRIOT BI-CHROME BOWL, decorated with dark concentric bands on redware body, on small circular foot. 10.5cm diameter; together with a Pre-Phoenician redware ewer, c.1000 B.C. 10cm high (2)
€ 250 - 400



274 A VICTORIAN LOUIS QUATORZE EBON AND BOULLE RECTANGULAR DISPLAY CABINET with applied brass gallery rail above a single glazed panel door, applied with gilt brass mounts and raised on shaped platform base. 83cm wide x 37cm deep x 112cm high
€ 500 - 800



275 A VICTORIAN LOUIS QUINZE WALNUT MARQUETRY SHAPED RECTANGULAR GUERIDON, the top with central panel of foliage, with gilt brass mounts, fitted single frieze drawer and raised above a lower open tier, on cabriole legs. 46 x 36cm
€ 700 - 1,000



276 A KINGWOOD MARQUETRY GUERIDON, 19th century, the banded top inlaid with a basket of flowers, with frieze drawer on slender tapering legs with circular platform stretcher. 35.5cm diameter, 72cm high
€ 500 - 800



277 A PURPLEWOOD GUERIDON, IN LOUIS XVI STYLE, the red marble top with pierced brass gallery, with panelled frieze, on four tapering legs inset with brass filets, on brass knob feet. 51cm diameter, 75cm high
€ 400 - 600



278 EDWARD LOUIS LAWRENSON (1868-1940)
A Summer Evening at the Mill Pond
Oil on canvas, 51 x 71cm
Signed
€ 800 - 1,200



279 A PAIR OF FRENCH ORMOLU AND FROSTED GLASS
SIX BRANCH CEILING LIGHTS,
20th century, with leaf cast corona and splayed drapery columns sup-
porting a deep trellis basket with rows of glass flowerheads, applied
with cherub figures holding floral swags and floral moulded shades.
68cm diameter x 95cm high
€ 2,500 - 4,000



280 A GEORGIAN STYLE MAHOGANY WING BACK
ARMCHAIR,
covered in olive green hide with brass studding, on chamfered square
supports. 81cm wide x 108cm high
€ 400 - 600



281 A ROSEWOOD CASED BOUDOIR GRAND PIANO,
by Beulhoff. 141 x 140cm
€ 1,500 - 2,500



282 CIRCLE OF HERMANUS KOEKKOEK (1836-1909)
 Fisherfolk on a landing with vessels beyond
 Oil on canvas, 55 x 75cm
 € 600 - 1,000

283 JAMES FINUCANE DRAPER (1836-1876)
 Mount Orgueil Castle from the harbour
 Oil on canvas, 55 x 77cm
 Signed
Provenance: With St. Helier Galleries, Jersey
 € 600 - 1,000



284 A 19TH CENTURY INLAID MAHOGANY OVAL DOUBLE
 DROP LEAF PEMBROKE TABLE,
 decorated with boxwood panels, with foliate motifs and with rosewood
 crossbanding, fitted single frieze drawer and raised on square taper-
 ing legs with brass castors. 83 x 98cm open
 € 600 - 800



285 A 19TH CENTURY CONTINENTAL INLAID MAHOGANY
 RECTANGULAR SECRETAIRE À ABATTANT
 with brass gallery raised above a single frieze drawer, drop-front writ-
 ing section with fitted pigeon holes on a twin door cupboard base, de-
 corated with brass stringing and reeded pilasters with brass capitals,
 raised on square tapering legs. 97cm wide, 163cm high
 € 600 - 1,000



286 MARCEL DYF (1899-1985)
Flowers in an Oriental vase
Oil on canvas, 71 x 56cm
Signed
€ 3,000 - 4,000



287 A GEORGE IV INLAID MAHOGANY DOUBLE DROP
LEAF SOFA TABLE
decorated with banding and raised on ring-turned centre pillar
and splayed quadruped base with brass toe-caps and casters
€ 1,000 - 1,500



288 A SET OF THREE SEVRES PORCELAIN PORTRAIT PANELS,
19th century, depicting Louis XIV, Louis XV and Louis XVI each painted within gilt foliate reserves against a blue ground and contained within moulded ebonised frames. 9.5cm high
€ 500 - 800



289 A MEISSEN PORCELAIN FIGURE OF A FEMALE MUSICIAN,
19th century, modelled after J.J. Kandler, of a lady standing with a hurdy gurdy on a moulded scrollwork base, cross swords mark with incised numerals 1352. 32cm high
€ 500 - 800



290 A GERMAN 18TH CENTURY PORCELAIN FIGURE,
modelled as a young lady standing with an apron filled with picked flowers, a reclining ewe by her feet, on moulded scrollwork base, cross swords variation in underglaze blue, bearing old label 'Rhodes Collection: J.J. Kandler Meissen 1750'. 27cm high
€ 500 - 800



291 A PAIR OF DERBY PORCELAIN FIGURES, (1780-1830)
modelled as a street entertainer and fish vendor, each 17cm high together with two miniature Derby groups 19th century depicting male and female figures milking goats, each 9cm high and a Staffordshire figural group titled 'Tenderness'. 17cm high and a collection (9)
€ 300 - 400



292 A PAIR OF DERBY PORCELAIN POT POURRI URNS, c.1830, each painted with floral bands and gilt highlights, with pierced lion mask rims and supported on concave plinth bases 10.5cm high, together with two Vienna porcelain coffee cans, 19th century, a pair of spill vases decorated with hunting scenes 'en griselle'. 11cm high
€ 200 - 300



293 A PAIR OF CHAMBERLAIN WORCESTER FLORAL PAINTED OVAL DISHES, with pink and gilt borders, factory mark verso New Bond Street London. 25cm wide; together with a continental two-handled ice pail. 19cm across handles; a floral painted straining dish; a Chelsea style trellis posy holder; two coal port ground dishes; and a Meissen tea service
€ 200 - 400

294 A CHAMBERLAIN WORCESTER TWO-HANDLED CUP AND COVER decorated in the Chinese fer de rouge style, Worcester Charlotte pattern teapot (damaged), a blue and white transferred bowl probably Liverpool and an English c.18th figure of a female fruit gatherer. 24cm high (4)
€ 250 - 350



295 A FRENCH SERVES PORCELAIN JEWELLED ECULLE AND COVER, 18th century, domed cover with entwined gilded handle and oval reserves filled with individual coastal scenes within gilded beaded borders and celestre ground above a two-handled body conforming in decoration and a shaped oval stand body, 22cm wide across handles, stand 25cm wide interlaced L factory mark
€ 500 - 800

294



296 A VICTORIAN SPELTER CLOCK GARNITURE

€ 500 - 700



297 A SWISS DIRECTOIRE STYLE CARVED WOOD GREEN AND GILT DECORATED BRACKET CLOCK,

the white enamel dial above a pierced panel carved with astronomical trophies, raised on heavy paw feet, with inverted bracket decorated with a ribbon tied quiver of arrows and a torch ensuite. The clock 71cm high

€ 600 - 1,000



298 A PAIR OF 19TH CENTURY WROUGHT IRON RUSH LIGHT HOLDERS, raised on circular bases. 33cm high

€ 50 - 80



299 A 19TH CENTURY EBONISED TIMBER CASED MANTLE CLOCK, of rectangular form, the case with foliate cast brass handle to the domed top, decorated allover with applied cast pierced mounts, the matted gilt metal centre with silvered chapter ring and applied brass oak leaf spandrels, raised on a moulded base with brass bracket feet. 35cm high x 27 x 19cm

€ 2,000 - 3,000



300 A PAIR OF FRENCH GILT METAL FIGURAL COMPORTS, c.1900, modelled as putti holding aloft a scallop shell and riding the back of a dragon. 22cm high

€ 300 - 500



301 A CLOCK GARNITURE IN LATE 18TH CENTURY FRENCH STYLE, c.1900, the clock with flower-swagged enamel dial, surmounted by a billing-dove, on short white marble truncated column, pedestal base, with a pair of two-branch candelabra matching, gilt metal mounts throughout. The clock 29cm high

€ 400 - 600



302 A JAEGER-LE-COULTRE 'ATMOS' MANTLE CLOCK, in fitted case, brass frame with clear glass top and side panels, angled corners and squared dial, numbered on the quarter, stamped with serial number 148860. The clock 23.5cm high

€ 1,000 - 1,500



303 A VICTORIAN MAHOGANY RECTANGULAR PARTNER'S DESK, the inset scribe above two short drawers and eight pedestal drawers and cupboards with turned wooden handles. 167 x 106cm

€ 1,000 - 1,500



304 ATTRIBUTED TO PHILIP JOHN OULESS (1817-1885)
Mont Orgueil Castle from the beach, with a man shrimping
Sepia oil sketch on millboard, 20 x 29.5cm

Provenance: With St. Helier Galleries, Jersey.

€ 400 - 500

305 ABRAHAM HULK JNR (1851-1922)
Fishing Vessels in a squall, and Rowing ashore
A Pair, oil on panel, 12.3 x 19.5cm
One with signature 'A. Hulk'

€ 400 - 500



306 EDWIN HAYES RHA RI (1820-1904)
Running before a Breeze
Watercolour, 33 x 51cm

€ 600 - 800



307 JOHN NIXON (1760-1818)
Holyhead Harbour
Watercolour, 8.5 x 30cm
Signed

€ 200 - 400



308 ATTRIBUTED TO WILLIAM
MCALPINE (ENGLISH SCHOOL,
C. 19TH)
'Beached Fishing Vessels' and 'Shipping in
Rough Seas'
A pair, oil on canvas, 30 x 60cm
€ 1,000 - 1,500



309 CIRCLE OF HERMANUS
KOEKKOEK (1836-1909)
Boats on an estuary
Oil on canvas, 42 x 68cm
€ 700 - 1,000



310 EDWARD DUNCAN (1803-1882)
A Shore Scene with Fisherfolk at Sunset
Oil on canvas, 18 x 25.5cm
Signed and dated 1880
€ 500 - 800



311 EDMUND BLAMPIED RBA (1886-1966)
Spanish town scene
Charcoal, 17.5 x 22cm
Signed with initials

Provenance: With St. Helier Galleries, Jersey

€ 400 - 600



312 EDWARD BLAMPIED (1886-1966)
Pays Basque
Pen, ink and monochrome wash,
19 x 23cm
Signed

Provenance: With St. Helier Galleries, Jersey

€ 400 - 600



313 EDWARD BLAMPIED (1886-1966)
Farmworker
Charcoal, 20 x 14.5cm

Provenance: With St. Helier Galleries, Jersey

€ 400 - 600



314 AFTER JAMES MALTON
 Twelve Views of Dublin
 Coloured aquatints, 32 x 44cm
 (12)

€ 1,200 - 1,600



315 AN EARLY VICTORIAN MAHOGANY PEMBROKE TABLE, with moulded rim, rounded corners, the frieze with one pull out compartmented drawer, on baluster ring turned legs and brass castors. 130 x 71cms

Provenance : Adare Manor by repute

€ 400 - 600



316 A MAHOGANY RECTANGULAR DESK, 19th century with green tooled leather inset top, moulded rim with one long pull out drawer above a shaped recess and two short pull out drawers on tapering legs with brass castors. 124 x 69cms

Provenance: Ballinamona Park, Co. Waterford

€ 400 - 600



317 A VICTORIAN MAHOGANY AND GREEN TOOLED LEATHER WRITING TABLE, mid 19th century, moulded rim above two short drawers with brass circular ring handles, on baluster turned legs. 116cm x 55cm

€ 300 - 500



318 ENGLISH SCHOOL (18TH CENTURY)
Portrait of a Lady in a Grey Silk Dress, half-length
Oil on canvas, 73 x 60cm
In a fine carved giltwood frame

€ 700 - 1,000



320 A GEORGE IV INLAID MAHOGANY RECTANGULAR CELLARETTE, the top with rosewood crossbanding, fitted twin brass lion mask and ring handles and raised on ring turned baluster legs. 48 x 33 x 58cm high

€ 400 - 600



321 A LOUIS QUINZE STYLE ROSEWOOD BUREAU DE DAME, with brass gallery rail above three short drawers and painted cylinder mechanism writing section, enclosing a fitted interior above a single frieze drawer on gilt metal mounted cabriole legs. 77cm wide x 54cm deep x 108cm high

€ 800 - 1,200



322 A GEORGE III MAHOGANY CHEST, of rectangular form with two short and three long graduated drawers on bracket feet. 90cm wide x 48cm deep

€ 200 -400



323 A VICTORIAN INLAID MAHOGANY COMPACT SLOPEFRONT BUREAU with fitted interior and raised above four long drawers on splayed bracket feet

€ 500 - 800

- 324 ATTRIBUTED TO PIETER VAN BLOEMEN (17TH CENTURY)
Figures and Horses Watering
Oil on canvas, 35 x 30cm
€ 600 - 1,000
-



- 325 A SET OF SIXTEEN VICTORIAN MAHOGANY FRAMED
DINING CHAIRS,
with plain balloon backs, padded seats covered in striped fabric and
raised on fluted baluster turned legs
€ 3,000 - 5,000
-



326 A 19TH CENTURY TURKOMAN AFGHAN RUG, the maroon ground centred with a row of four large medallions with bright crimson and deep navy highlights, the whole to a series of graduated borders consisting of interspersed hooked motifs towards the centre, followed outwards by bands of geometric and ropetwist decoration, to a fine exterior band highlighted in bright crimson. 139 x 119cm

€ 300 - 500



327 A NIRIZ CARPET, c.1839, the red ground with a large navy central reserve bearing floral motifs and contained within a thick and wavy cream perimeter, with sky blue highlights, the whole to a row of graduated borders, each with interlinked geometric designs. 195 x 147cm

€ 400 - 600



328 A BOKHARA WOOL RUG, the central field with multiple octagonal medallions on navy blue ground, within borders and guard stripes. 188 x 125cm

€ 300 - 400



329 A PERSIAN WOOL RUG with central medallions in rust red, deep blue and off-white, with foliate decoration, within border and multiple guard stripes. 180 x 125cm

€ 300 - 400



330 A BOKHARA WOOL RUG, the central field with multiple octagonal medallions on navy blue ground, within borders and guard stripes. 164 x 128cm

€ 300 - 400



331 A PERSIAN WOOL AND SILK RUG, with central medallion within a beige and pale blue foliate field, on a deep navy ground, within multiple borders and guard stripes. 222 x 118cm

€ 700 - 1,000



332 A VICTORIAN GILTWOOD AND GESSO TRIPLE COMPARTMENT OVERMANTLE MIRROR with moulded cornice and beaded banding above a blind fret lattice work frieze centered with a lion mask
€ 400 - 600



333 AN EDWARDIAN INLAID MAHOGANY BUREAU BOOKCASE with moulded cornice above twin astragal glazed panel doors on a base with fall front and fitted interior above four long drawers and raised on bracket feet
€ 600 - 1,000



334 A 19TH CENTURY MAHOGANY RECTANGULAR CONSOLE TABLE with veined marble top, raised above single frieze drawer on brass mounted turned columns on platform base. 101.2cm wide, 85.5cm high
€ 250 - 350



335 A 19TH CENTURY MAHOGANY RECTANGULAR TALL BOY CHEST of six long drawers with moulded rims, brass tire and raised on bracket feet. 66cm wide, 46cm deep, 141cm high
€ 300 - 400



336 A GEORGE II STYLE UPHOLSTERED WING BACK ARMCHAIR, covered in floral gold damask and raised on mahogany cabriole legs. 103cm wide, 123cm high
€ 250 - 350



337 A GEORGIAN STYLE MAHOGANY THREE TIER GRADUATED CIRCULAR DUMB WAITER, with surmounted urn finial, reeded rims and raised on shaped tripod supports. 149cm high
€ 400 - 600



338 A 19TH CENTURY INLAID MAHOGANY NIGHT STAND, the false drawer fascia with boxwood and ebon stringing and ivory inlaid knob handles, raised on square tapering legs with spade feet. 38 x 38 x 79cm high
€ 250 - 350



339 A LARGE 19TH CENTURY MAHOGANY CIRCULAR SNAP-TOP SUPPER TABLE with plain rim, raised on baluster turned centre pillar tripod supports. 93cm diameter
€ 500 - 800



340 A 19TH CENTURY MAHOGANY CIRCULAR SNAP-TOP SUPPER TABLE
with moulded rim and raised on turned centre pillar and carved tripod supports, 87cm diameter
€ 400 - 600



341 A GEORGE III MAHOGANY CIRCULAR SNAP-TOP SUPPER TABLE
with carretto top raised on ring turned centre pillar tripod supports with brass casters. 75cm diameter
€ 500 - 800



342 A GEORGE III STYLE MAHOGANY LOBED CIRCULAR SNAP-TOP SUPPER TABLE,
the centre carved with foliate motifs within six dished discs, raised on turned centre pillar and carved tripod supports. 69cm diameter
€ 500 - 800



343 A CHINESE CHIPPENDALE REVIVAL MAHOGANY SIDE TABLE,
late 19th century, of serpentine form, with moulded top above a single long frieze drawer, decorated with blind fretwork on chamfered square supports. 104cm wide
€ 400 - 600



344 A DUTCH TWENTY-FOUR BRANCH BRASS FRAMED CEILING LIGHT, arranged with two tiers of twelve scroll arm branches, each with raised light socket and circular drip pan, on a baluster and spherical column. c.90cm diameter

€ 300 - 500



345 A MODERN BRASS FRAMED HALL LANTERN, with frosted glass panels. Approx. 46cm to fitting; together with a brass framed three branch ceiling light with ovoid body and fitted with bell shaped opaque glass shades. (2)

€ 200 - 300

347 A BRASS FRAMED CIRCULAR CEILING LIGHT, 20th century, hung with slender fitted supports, with pierced frieze decorated with cherubs and fruiting vines, issuing six raised light sockets and silk apron. Approx. 67cm diameter

€ 500 - 800





348 A LARGE FRENCH BRASS FRAMED AND GLASS
TWO-TIER CHANDELIER,
with thirty branches, the candle lamps with circular drip pans and dec-
orated with pendants, icicle drops and bead swags, electrified. 73cm
drop, 100cm diameter

€ 800 - 1,200



349 A PAIR OF GILTMETAL AND JASPERWARE TWO BRANCH WALL SCONCES, of classical form, formed with upturned ropetwist arms and foliate cast sconces, the back plate inset with blue and white porcelain panels below a laurel wreath and flambeau finial. 48cm high



350 A FRENCH KINGWOOD ORMOLU AND MARQUETRY INLAID SIDE TABLE, in Louis XVI style, with shaped rectangular top inlaid with musical trophies above a single frieze drawer on circular supports. 73cm wide
€ 300 - 500



351 A SET OF FOUR EDWARDIAN INLAID MAHOGANY SIDE CHAIRS with pierced lattice-work splats, padded seats and raised on square supports
€ 200 - 400

352 AN EDWARDIAN BOWED MAHOGANY AND BOXWOOD INLAID DISPLAY CABINET, with glazed single door and raised on square tapering legs. 46 x 37 x 74cm high
€ 50 - 100



353 A MAHOGANY OCTAGONAL TOP WINE TABLE raised on a baluster centre pillar tripod; together with another wine table on tripod base. (2)
€ 100 - 200



354 A GILTWOOD HALF CIRCLE MARBLE TOP CONSOLE TABLE
€ 500 - 700



355 ALBERT LUDOVICI SENIOR (1820-1894)
Portrait of a Seated Lady, Three Quarter Length in an Elegant Interior,
Wearing a Black Dress and White Lace Mantilla
Oval, oil on canvas, 48 x 41cm
Signed with monogram and dated 1855

€ 1,000 - 1,500



356 A GEORGE III STYLE MAHOGANY SERVING TABLE,
the plain serpentine top above fluted frieze, raised on four tapering
supports, on block feet. 84 x 167cm

€ 800 - 1,200



357 A 19TH CENTURY PLAIN MAHOGANY RECTANGULAR FOLDING TOP TEA TABLE raised on chamfered square supports. 86cm wide

€ 80 - 120

358 A VICTORIAN EMBOSSED BRASS COAL SCUTTLE, with swing handle, decorated with floral motifs and raised on a rim foot with shovel

€ 80 - 120

359 A 19TH CENTURY INLAID MAHOGANY GAMES TABLE, the plain folding top above a frieze with boxwood stringing and dentil banding and raised on square tapering banded legs. 88 x 44cm

€ 250 - 350



360 A MAHOGANY RECTANGULAR BOOKCASE ON STAND, with moulded cornice above twin astragal glazed panel doors, raised on square supports. 181cm high, 114cm wide

€ 300 - 500

361 A 19TH CENTURY MAHOGANY RECTANGULAR BUTLER'S TRAY with raised sides and inset handles on a later mahogany stained folding stand. 68 x 44cm; together with a oval mahogany two handled serving tray. 84cm long over handles (2)

€ 100 - 200

362 A VICTORIAN MAHOGANY RECTANGULAR MUSIC CANTERBURY fitted with three compartments, drawer in base and raised on turned legs. 38 x 50cm

€ 150 - 250



363 A 19TH CENTURY MAHOGANY BOOKCASE
with moulded cornice above twin diamond astragal glazed panel doors
on a base, fitted twin drawers above a twin fielded panel door cup-
board on bracket feet. 111.5 x 209.5cm
€ 500 - 800



364 A 19TH CENTURY INLAID MAHOGANY NARROW
SIDEBOARD
with raised superstructure above an arrangement of open compart-
ment, drawer and cupboard
€ 500 - 800



365 A GEORGE IV MAHOGANY BOWFRONT CHEST
on two short and three long graduated cockbeaded drawers with
brass ring handles and raised on bracket feet. 103cm wide, 106cm
high
€ 250 - 350



366 A 19TH CENTURY MAHOGANY RECTANGULAR SIDE
TABLE,
the plain top above a frieze with applied foliate scrollwork on bold
square tapering banded legs. 107 x 49cm
€ 250 - 350



367 A MODERN IVORY DAMASK UPHOLSTERED THREE PIECE SUITE, comprising a low sofa and pair of matching armchairs. Sofa 78cm high x 165cm wide (3)
€ 600 - 800



368 A PAIR OF MODERN FLORAL UPHOLSTERED WINGBACK EASY CHAIRS, each with fitted cushions. 85cm high x 65cm wide (2)
€ 300 - 500



369 AN UPHOLSTERED MAHOGANY FRAMED TWO SEAT SETTEE, the upholstered rectangular panel back and seat raised on a shell and foliate scroll carved apron, on short cabriole legs and paw feet. 146 cm wide x 70cm deep
€ 700 - 1,000



372 A HOWARD STYLE UPHOLSTERED TWO SEAT SOFA, with raised back and outscrolling sides on short tapering legs and brass castors. 139cm wide
€ 400 - 600



373 AN EDWARDIAN INLAID ROSEWOOD FRAMED UPHOLSTERED LOW SEAT SETTEE, covered in stripe and star material and raised on turned legs. 136cm wide
€ 250 - 350



374 A PAIR OF 'PABLO' WHITE PAINTED RECTANGULAR OCCASIONAL TABLES, the timber frames covered in textured gesso, and raised on stylised cabriole legs and pad feet. 73 x 50 x 57cm high
€ 200 - 300



375 A CHINESE CARVED IVORY CARD CASE, Canton, c.1850; together with another smaller example and a collection of three tortoise shell card cases. (5)

€ 300 - 500



376 A CHINESE 19TH CENTURY PORCELAIN CASKET AND COVER, canton circa 1850 of rectangular form decorated all over with figures within an interior, 18x9 cm, a 19th century cylindrical pot and cover painted and enamelled with figures in a garden landscape, 14cm high, smaller companion piece and two further canton vases (5)

€ 250 - 350



377 THREE JAPANESE CARVED IVORY OKIMONOS, 19TH CENTURY, comprising a sectional ivory model of a standing fisherman, with red tab signature; another of a sage; and a carved group of a man standing over the body of a swan, signed. (3)

€ 50 - 100



378 A BRONZE GROUP OF A CRANE, standing on the back of a tortoise. 37cm high

€ 80 - 120



379 A LARGE CHINESE CARVED IVORY ARC SHAPED TUSK, carved with figures travelling by a riverbank, with pagodas amongst pine trees, 63cm long

€ 200 - 400



380 A CHINESE 18TH CENTURY EXPORT WEAR TEAPOT AND COVER

in the Mandarin palette each side decorated with a reserve of families sealed in a garden against a pure fish scale ground, 14cm high, a European subject saucer dish and cup painted en grisille depicting male and female anglers, a Chinese Jai Qing teabowl and cover with square seal marked base together with a miscellaneous collection of export wear

€ 300 - 400

381 TWO CHINESE CANTON ENAMEL
TEA KETTLES

on stand, each with brass and wicker swing handle with detachable top and globular body painted with cartouche shaped reserves filled with figures in a interior surrounded by groups of floral frays raised on circular burner and stand. The larger is 24cm high to finial, smaller 22cm high to finial

€ 300 - 500



382 A PAIR OF DRESDEN PORCELAIN
VASES

and covers, 19th century to a design by Carl Thieme of ogee baluster form with domed cover capped with an armorial below on coronet with cherubs, the body richly decorated with painted garden scenes under a ribbon bow flanked by side handles formed as infants wearing bonnets, on circular bases. 64cm high

€ 800 - 1,200



383 A LARGE DRESDEN PORCELAIN
VASE AND COVER,

19th century to a design by Carl Thieme of ogee baluster form with domed cover capped with an armorial below on coronet with cherubs, the body richly decorated with painted garden scenes under a ribbon bow flanked by side handles formed as infants wearing bonnets, on circular base. 74cm high

€ 600 - 1,000





384 MANNER OF SIR ALFRED MUNNINGS (1878-1959)
Hunting Scene with Riders and Hounds in a Country Lane
Oil on canvas, 51 x 81.5cm
€ 500 - 700



385 JOHN HENRY BOEL (19TH CENTURY)
Highland Landscapes, Morning and Evening
A pair, oil on canvas (20.3 x 40.6cm)
Both signed and dated 1904
€ 500 - 800



386 BRITISH SCHOOL, 19TH CENTURY
The Rialto Bridge, Venice
Watercolour, 28 x 47.5cm
Signed with monogram EWC and dated (18)85
€ 600 - 800



387 19TH CENTURY SCHOOL, AFTER RICHARD WILSON
(C.1714-1782)
The Falls at Tivoli
Oil on panel, 19.5 x 25cm
€ 300 - 500



388 LILIAN STANNARD (1877-1944)
Summer Borders
Watercolour, 49.5 x 82cm
Signed
€ 1,500 - 2,500



389 A GEORGIAN MAHOGANY COMPOSED WRITING TABLE,
the lift top with moulded rim opening to reveal an interior fitted with
tooled leather writing surface, pen tray and various compartments,
raised on cabriole legs and pad feet. 81 x 50cm
€ 1,000 - 1,500



394 A FRENCH FRUITWOOD MARQUETRY BOWFRONT
SIDE CABINET,
the pink veined marble top above twin frieze drawers with applied
brass frieze and twin panel door cupboard, flanked by reeded pilasters
and raised on cabriole legs with applied brass mounts. 108cm wide x
49.3cm deep x 88cm high

€ 1,000 - 1,500



395 A FRENCH KINGWOOD MARQUETRY VERNIS MARTIN
STYLE BOWFRONT TWIN DOOR SIDE CABINET,
with marble top above twin panel doors decorated with figures in
landscapes, with applied brass mounts, raised on cabriole legs with
applied brass paw feet. 106cm wide x 43cm deep x 114cm high

€ 1,200 - 1,500



396 WILLIAM MARK FISHER RA
(1841-1923)
Cattle on a Path under Blossom Trees
Oil on canvas, 46 x 60cm
Signed

€ 500 - 600



397 GIOVANNI MARTINELLI (1900-
1959)
Penisola di Bellagio
Oil on board, 15 x 60cm
Signed; also signed and inscribed verso

€ 300 - 400



398 MANNER OF TREVOR THOMAS
FOWLER (C.1830)
Children Resting on a Hillside
Oil on canvas, 38 x 30cm

€ 400 - 600



399 GEORGE HOUSTON (1869-1947)
Scottish Coastal Scene
Oil on canvas, 70 x 89cm
Signed
€ 1,000 - 2,000



399A A PAIR OF VICTORIAN WHITE PAINTED TIMBER
FRAMED OVERMANTEL MIRRORS,
of rectangular form, surmounted with a tongue and dart cornice, and
scroll cartouche above an arch top plate within laurel and beaded bor-
ders. 182 x 165cm
€ 1,500 - 2,500



400 ITALIAN SCHOOL (18TH CENTURY)
Madonna and Child
Oil on panel, 22 x 19cm
€ 150 - 250



401 DUTCH SCHOOL (17TH CENTURY)
Belisarius as a Beggar
Oil on canvas, 28 x 28cm
€ 300 - 400



402 A 19TH CENTURY NEEDLEWORK SAMPLER
by Elizabeth Weston, aged 11 years
51 x 44cm
€ 300 - 400



403 ALFRED FONTIVILLE DE BRÉANSKI (1877-1957)
A Tranquil Day by the River
Watercolour, 27 x 42cm
Signed
€ 400 - 600



404 RÉNE JOSEPH MARIE LEVREL (1900-1981)
At the harbour
Watercolour, 28 x 37cm
Signed and dated 1955
€ 250 - 350



405 EDWARD BLAMPIED (1886-1966)
Comrades
Pen and ink with monochrome wash, 24 x 30.5cm
Signed and inscribed
Provenance: With St. Helier Galleries, Jersey; Formerly in the collection of Sir Bruce Ingram
€ 500 - 600



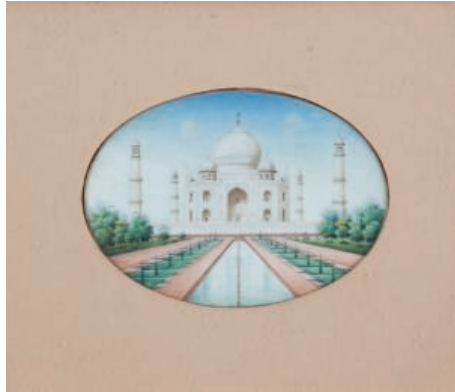
406 A 19TH CENTURY BERLIN STYLE PORCELAIN
RECTANGULAR PLAQUE
Painted with the portrait of a young woman in 17th century style
costume
Unmarked verso, 23 x 16cm
€ 300 - 500



407 WALTER STUART LLOYD (1859-1929)
Figures by a duck pond
Oil on canvas, 30 x 40cm
Signed
€ 300 - 500



408 ENGLISH SCHOOL C. 1850
Couple on a coastal track with ruins
beyond
Oil on canvas, 15 x 20cm
€ 80 - 120



409 AGRA SCHOOL
Taj Mahal
Oval watercolour on ivorine 8 x 11cm
€ 200 - 300



410 FOLLOWER OF FRANCIS SWAIN
The morning gun
Oil on panel, 12 x 17.5cm
€ 200 - 400



411 FOLLOWER OF ARNESBY
BROWN
View across a field, with trees beyond
Oil on panel, 22.5 x 30cm
*Provenance: Arthur Tooth & Sons trade
label affixed verso*
€ 100 - 150



412 ATTRIBUTED TO GEORGE
KNIGHT (19TH CENTURY)
Fishermen pulling in nets
Oil on board, 18 x 34cm
Bearing signature 'T. B Hardy 91'
€ 300 - 400



414 KEN HOWARD (B.1932)
Harbour scene, St. Aubins
Oil on board, 25 x 35.5cm
Signed

Provenance: With St. Helier Galleries, Jersey

€ 700 - 1,000



415 ATTRIBUTED TO CHARLES MARTIN POWELL (1775-1824)
Vessels in a swell
Oil on panel, 26 x 34cm

€ 500 - 800



416 FRED CUMING (B.1930)
Roses
Oil on board, 25 x 19.5cm
Signed and inscribed with title verso

€ 400 - 500



417 KEN HOWARD (B.1932)
Katmandu
Watercolour, 17.5 x 13cm
Signed

Provenance: With New Grafton Gallery, London (1984); With St. Helier Galleries, Jersey

€ 400 - 600



418 A FRENCH GILTWOOD AND GESSO CARTOUCHE SHAPED FIRE SCREEN, surmounted with foliage and scroll work, the tapestry panel depicting a vase of flowers and raised on scroll supports. 105cm high x 62cm wide

€ 150 - 250



419 A LOUIS QUINZE STYLE GILTWOOD SALON CHAIR, tapestry covered seat and panel back and raised on turned legs

€ 200 - 300



421 AN EDWARDIAN TWO-BRANCH GILT-METAL AND CUT-GLASS CENTRE LIGHT, with down-swept leaf embellished arms. Approx. 90cm wide

€ 300 - 500



424 A FRENCH ROSEWOOD MARQUETRY CORNER VITREEN,
with set-back raised top above a single curved glazed panel door, the lower panel with floral inlay, the entire decorated with applied ormolu mounts, and raised on cabriole legs. 169cm high x 81cm wide x 57cm deep

€ 600 - 800



425 A FRENCH INLAID MAHOGANY RECTANGULAR VITREEN,
the marble top above a panelled cornice centred with an applied gilt ormolu musical motif above a single glazed panel door, the lower part with oval panel decorated with ormolu ribbon and swag on a parquetry ground, and raised on cabriole legs with ormolu mounts. 164cm high x 68cm wide

€ 600 - 800



426 A FRENCH KINGWOOD MARQUETRY SHAPED RECTANGULAR JARDINIERE TABLE,
the lift off top revealing a metal lined interior above shaped aprons, applied with all-over ormolu mounts and banding and raised on cabriole legs. 69 x 47cm

€ 500 - 800



427 A FRENCH PARQUETRY OVAL BEDSIDE TABLE,
the green veined marble top within a pierced gallery raised above a lower single panel door cupboard, the entire decorated with applied ormolu mounts and raised on short turned feet. 80cm high x 50cm wide x 39cm deep

€ 350 - 450



428 A FRENCH ROCOCO REVIVAL GILTMETAL EASEL MIRROR, 19th century, of cartouche shape, headed by cabouchon cresting, c-scrolls and rockwork, around a plain rectangular mirror plate, over winged figure, with adjustable easel support. 37cm high

€ 200 - 300



429 A GREEN MARBLE PEDESTAL, with circular platform top and spiral tapering column on octagonal plinth base. 110cm high

€ 400 - 600



430 A FRENCH 18TH CENTURY GILTMETAL AND GESSO PICTURE FRAME, of rectangular form, cavetto moulded with ribbon and reed inner border and beaded outer border. The exterior 142 x 116cm, the interior 125 x 100cm

€ 200 - 300



431 A FRENCH MARBLE AND BRASS FRAMED JARDINIERE STAND, of square form with two platform tiers separated by leaf cast tubular supports on scroll feet. 80cm high

€ 250 - 400



432 A LARGE 19TH CENTURY GILTMETAL AND GESSO PICTURE FRAME, of rectangular form with arched sight, set to the centre and corners with spandrels and foliage. The exterior 158 x 133cm, the interior 125 x 101cm

€ 300 - 500



433 A FINE VICTORIAN GILTMETAL AND GESSO PICTURE FRAME, c.1860, of rectangular form, the inner sight decorated with continuous opposing c-scrolls, the corners set with scallop shells, scrolls and rockwork. The exterior 156 x 120cm, the interior 107 x 77cm

€ 300 - 500



434 A FRENCH KINGWOOD MARQUETRY SHAPED RECTANGULAR CENTRE TABLE, the ormolu rim and rosewood crossbanding enclosing a parquetry top, fitted single frieze drawer, the entire decorated with applied ormolu arabesque mounts and raised on cabriole legs. 102 x 62cm

€ 600 - 800



435 A GILTWOOD PLASTER AND GESSO SHAPED RECTANGULAR UPRIGHT OVERMANTLE MIRROR, surmounted with festoons of flowers, ribbons, quiver and arrows, the frame bordered with oak leaves and beading. 138cm high x 109cm wide

€ 300 - 400



436 A FRENCH MAHOGANY SHAPED RECTANGULAR VITREEN, with marble top and profusely applied with gilt brass mounts, the lower panels decorated in the Vernis Martin style and raised on stylised cabriole legs. 87cm wide x 160cm high x 37cm deep

€ 500 - 800



437 A LARGE FRENCH OVAL GILTWOOD MIRROR, 19th century, the plain glass plate surmounted by a ribbon tied crest with floral trails to either side, the apron with bound wheat sheaves. 139cm high x 97cm wide

€ 600 - 1,000



438 AN EDWARDIAN MAHOGANY FRAMED ARMCHAIR with inlaid rosewood splat, padded seat on cabriole legs and a George IV mahogany framed elbow chair on turned legs, in the 'Cork' style. (2)
€ 200 - 300



439 A 19TH CENTURY MAHOGANY RECTANGULAR SNAP-TOP OCCASIONAL TABLE with plain rim and raised on turned centre pillar supports. 45 x 42cm
€ 100 - 150



440 A PAIR OF 19TH CENTURY MAHOGANY FRAMED DINING CHAIRS in the Hepplewhite taste with padded seats on chamfered square supports together with a later similar armchair (3)
€ 150 - 200



441 A GEORGIAN STYLE MAHOGANY RECTANGULAR TRAY TOP OCCASIONAL TABLE with wavy rim and raised on square supports. 43 x 59cm
€ 150 - 200



442 TWO GEORGIAN STYLE MAHOGANY SHAPED CIRCULAR WINE TABLES raised on carved tripod supports (2)
€ 50 - 80



443 A GEORGIAN STYLE MAHOGANY RECTANGULAR STOOL with floral fabric, raised on shell carved cabriole legs together with a plain rectangular stool with padded seat on chamfered square legs. Both 52 x 40cm (2)
€ 150 - 250



444 A PAIR OF BLACK AND GILT PAINTED TÔLE RECTANGULAR OCCASIONAL TABLES, the tray tops decorated with floral sprays raised on timber bamboo effect table bases. 66 x 48 x 55cm high
€ 400 - 600



445 A VICTORIAN BLACK PAPIER MACHÉ SALON CHAIR with inlaid mother of pearl and gilded decoration, having a cane seat and raised on cabriole legs
€ 100 - 200



446 A GEORGE III INLAID MAHOGANY SERPENTINE FRONT SIDEBOARD, fitted three crossbanded frieze drawers with brass ring handles and raised on square tapering legs with boxwood stringing. 121cm wide x 56cm deep
€ 500 - 800



447 A GEORGIAN STYLE MAHOGANY RECTANGULAR BLANKET CHEST, with gadroon rim above twin panel doors fitted decorative brass hinges and raised on a base fitted twin drawers on a shell carved apron with short cabriole legs and claw and ball feet. 120cm wide x 113cm high
€ 250 - 350



448 A GEORGE IV MAHOGANY RECTANGULAR BREAKFRONT SIDEBOARD, with raised panel back and shaped sides above three frieze drawers and four fielded panel doors, with brass tire and raised on turned reeded column legs. 180cm wide x 58cm deep
€ 400 - 500



449 A LATE GEORGE III SHAPED RECTANGULAR SUPPER TABLE, the Japanned top with lacquered bird and foliage decoration and raised on ebonised and parcel gilt leaf carved and reeded centre pillar terminating on shaped rectangular platform base with cast brass ball feet. 80 x 49cm
€ 300 - 500



450 A 19TH CENTURY PALE WALNUT RECTANGULAR WORK TABLE, with moulded rim above a single frieze drawer, raised on a half hoop and turned centre pillar, on a sloping circular platform and four carved paw feet. 57 x 39 x 75cm high
€ 300 - 500



451 AN EARLY 19TH CENTURY INLAID MAHOGANY LONGCASE CLOCK, the hood surmounted with twin outturned scrolls with brass rosettes enclosing an enamel clock face with phases of the moon, works lacking, above a single panel door and raised on bracket feet. 230cm high
€ 300 - 400



452 A GEORGIAN MAHOGANY SECRETAIRE BOOKCASE, with moulded cornice and plain frieze above a pair of gothic arched glazed doors with brass trim, the outset base with moulded rim and fall-front secretaire drawer opening to reveal fitted interior of pigeon holes and drawers, with two deep drawers, flanked by two long arched panelled cupboard doors on reeded plinth base. 249cm high x 83cm wide

€ 1,000 - 2,000



453 A 19TH CENTURY DUTCH MARQUETRY RECTANGULAR FOLDING TOP GAMES TABLE, the top decorated with a vase of flowers within an oval border, opening to reveal a baise lined interior decorated with trailing flowers and four playing cards, raised on square tapering legs, similarly decorated. 82.5 x 41cm

€ 600 - 1,000



454 A GEORGE III STYLE MAHOGANY THREE PART D-END DINING TABLE,
with reeded rim and raised on triple pillar tripod supports with brass lion's paw feet and casters. 302cm long x 100cm wide
€ 400 - 500



455 A SET OF SIX GEORGE III STYLE INLAID MAHOGANY RAIL BACK DINING CHAIRS,
with curved rail backs having brass inlay, with cane seats on sabre legs
€ 400 - 600



456 A VICTORIAN INLAID WALNUT CREDENZA SIDE CABINET,
fitted centre fielded panel door decorated with an urn and flanked by twin glazed quadrant cupboards with gilt brass mounts and raised on breakfront platform base. 149cm wide x 38cm deep x 99cm high
€ 800 - 1,000



457 A GEORGE III STYLE MAHOGANY OVAL HUNT TABLE,
with moulded rim on square chamfered legs. 190cm wide
€ 500 - 7000



458 FRENCH SCHOOL, 19TH CENTURY
The Seamstress, Interior with Two Women
Oil on canvas, 46 x 36cm
€ 400 - 600



459 NORMAN GARSTIN (1855-1926)
View of a Lake with Sailing Boats
Watercolour, 24.5 x 30.5cm
Signed
€ 500 - 800



460 A REGENCY MAHOGANY AND ROSEWOOD BANDED
FOLDING TOP CARD TABLE,
with brass string inlay, on quadruple turned supports, the platform
base on short sabre legs with claw feet. 91.5cm wide
€ 600 - 800



461 A GEORGE IV MAHOGANY AND PARCEL-GILT
RECTANGULAR LIBRARY TABLE,
the moulded rim above two frieze drawers raised on leaf carved end
supports with carved and turned cross stretcher on reeded scroll feet.
135 x 68cm
€ 1,500 - 2,500



462 ALBERT CLARK (19TH CENTURY)
'Harvey', a Bay Racehorse in a Landscape
Oil on board, 25.5 x 35.5cm
Inscribed with title and indistinctly signed
€ 200 - 300



463 HENRY KINCAID
Hay Making
Watercolour, 19 x 39cm
Signed
€ 200 - 400



464 AN IRISH MAHOGANY FOLDING TOP TEA TABLE,
c.1815, with rounded corners, on central turned pillar support with
quadripartite hipped channelled downswept legs with heavy brass
claw castors. 91cm wide
€ 600 - 800



465 AN IRISH REGENCY CIRCULAR MAHOGANY
CROSSBANDED CENTRE TABLE,
on fluted turned support with tripod stand, on downswept quadripar-
tite legs with claw feet. 92.5cm diameter
€ 300 - 500



466 WILLIAM GALLOWAY (19TH/20TH CENTURY)
At Castle Robin
Watercolour, 35 x 49cm
Signed, inscribed and indistinctly dated 1915
€ 200 - 400



467 WILLIAM GALLOWAY (19TH/20TH CENTURY)
Cattle Grazing under Trees
Watercolour, 36 x 46cm
Signed and dated 1915, indistinctly inscribed 'In...Woods'
€ 200 - 400



468 A FRENCH PROVINCIAL OAK ARMOIRE,
the plain moulded cornice above single panel door, with raised relief
inserts, and single frieze drawer, raised on turned feet. 202cm high x
118cm wide x 55cm deep
€ 300 - 500



469 A 19TH CENTURY FRENCH PROVINCIAL FRUITWOOD
SERPENTINE FRONT COMMODE,
the moulded top above twin drawers carved with scrolls and having
applied brass drop handles, raised on carved cabriole legs and scroll
feet. 100cm x 57cm x 79.5cm high
€ 300 - 400



470 A VICTORIAN MAHOGANY CHEVAL MIRROR, with moulded rectangular cushioned frame, on solid upright supports, with brass candle sconces, and hipped downswept legs and brass toes. 183cm high
€ 400 - 600



471 A MAHOGANY WARDROBE IN GEORGIAN STYLE, with dentil cornice, plain frieze above a pair of astragal glazed and lined doors, and with dummy drawers, on bracket feet. 195cm high x 153cm wide
€ 200 - 300



472 A MAHOGANY GOTHIC PANEL BACK SIDE CHAIR, the apron with applied roundels and flanked by flowerheads on square legs
€ 80 - 120



473 A VICTORIAN MAHOGANY AND BOW FRONTED CHEST, fitted two short and three long drawers on outplayed bracket feet. 104 x 52cm
€ 200 - 400



474 A WILLIAM IV MAHOGANY FRAMED ELBOW CHAIR, with curved rail back, scroll armrests and padded seat raised on ring-turned tapering legs
€ 80 - 120



475 A 19TH CENTURY INLAID MAHOGANY OVAL OCCASIONAL TABLE, the top with boxwood shell pattern within bands of stringing and raised on square tapering legs and undertier. 60 x 43cm
€ 100 - 200



476 STEPHEN FRANCIS ALLEN (20TH CENTURY)
Bird of Prey, Peregrine Falcon (1997)
Gouache, 44 x 77cm
Signed and dated '97
€ 300 - 500



477 DAVID HENLEY (B.1949)
St. Aubins Harbour Steps
Oil on board, 20 x 28cm
Signed inscribed with title and reference number DH 29796 verso
€ 300 - 400



479 A FRENCH LOUIS QUINZE STYLE KINGWOOD MARQUETRY BREAKFRONT SIDE CABINET,
with marble top above three long drawers, the top drawer with applied brass fascia and ring handles, the lower drawers with urn, foliate and scroll decoration and with applied brass tire and mounts, raised on cabriole legs. 116 x 46 x 88cm high
€ 2,000 - 3,000



480 A 19TH CENTURY INLAID MAHOGANY RECTANGULAR CELLARETTE, of plain form, raised on square supports. 51 x 31 x 66cm high

€ 200 - 300



481 AN EDWARDIAN INLAID MAHOGANY RECTANGULAR PATIENCE TABLE, the twin folding top with oval satinwood panels and stringing enclosing a baised lined interior, fitted single frieze drawer and raised on square tapering legs. 55 x 45.5 x 77cm high

€ 200 - 400



482 A GEORGE III STYLE MAHOGANY CORNER CABINET, 19TH CENTURY, the moulded cornice above blind fret frieze, the twin astragal glazed doors above two panelled doors, on bracket feet. 101.5cm wide, 206cm high

€ 200 - 300



483 A CAST BRASS TELESCOPIC EXTENDING STANDARD LAMP, the plain fluted column rising from a spreading circular weighted base on bun feet

€ 100 - 200



484 A GEORGE III GREEN PAINTED AND PARCEL GILT DECORATED FRAME ELBOW CHAIR, the raised back with spindle rails and diamond shaped splat, with upholstered seat and raised on turned tapering legs

€ 100 - 200



485 AN EDWARDIAN INLAID MAHOGANY TWO PART CORNER CABINET, the moulded cornice above astragal glazed panel door and conforming base on square supports

€ 400 - 600



487 ATTRIBUTED TO JOHN WARWICK SMITH (1749-1831)
View of the Bay of Naples with Figures Resting in the Foreground
Watercolour, 66 x 99cm

€ 2,000 - 3,000



489 A 19TH CENTURY PALE MAHOGANY THREE PART
ECONOMY DINING TABLE,
with twin D-ends and centre section raised on square supports, to-
gether with two extra leaves. 300cm long x 130cm wide

€ 800 - 1,200



490 AFTER AFFORTUNATO GORY (C.1920)
A painted terracota bust of Daphne, signed verso. 41cm high; Together with an Edwardian mahogany and satinwood banded pedestal of squared tapering form, inlaid with a ribbon-tied floral basket to each side. 112cm high
€ 400 - 600



491 A PAIR OF BILSTON ENAMEL CIRCULAR SALT CELLERS, each of cauldron form painted with groups of summer flowers within gilt reserves against Lapis blue ground, 7.5cm diameter, a Rockingham porcelain patch box of oval form, a Staffordshire enamel snuff box titled 'summer' 5.5cm wide, a French enamel snuff box of oval form 5.5cm wide, a silver and tortoise shell pill box of rectangular form etc.
€ 200 - 300



492 A PAIR OF FRENCH LIMOGES ENAMEL CANDLESTICKS, 19th century in the Renaissance style, each decorated with portrait bust of Roman emperors and classical figures separated by white enamelled divisions and borders. 16cm high; together with malachite obelisk. 23cm high; 19th century and a carved coconut shell and a French simulated chagreen miniature bracket clock. 19cm high
€ 300 - 400



493 AN ENGLISH EARLY 19TH CENTURY MARY PATTERN TEA SERVICE, probably Spode c.1830, each decorated in traditional palette with alternating panels flowers contained within scrolling and guilt line borders; together with another early 19th century gilt decorated tea service probably Worcester
€ 250 - 350



494 AN EARLY 19TH CENTURY BLUE AND WHITE TRANSFER PRINTED TUREEN, applied with moulded scroll handles and decorated with continuous band of chinoiserie. 30cm wide over handles; together with a 19th century Copeland Spode centre dish of squared form and similar decoration. 13cm squared; and three 19th century oval sweet meat dishes of similar design (5)

€ 300 - 400



495 AN 18TH CENTURY POPPLESDORF STYLE FAIENCE LOBED CIRCULAR DISH, the reserve painted with two exotic birds in a landscape with a tree, within a pale blue and gilt scroll border. 25cm diameter

€ 200 - 300



496 A PAIR OF VICTORIAN WHITE PAINTED CAST IRON WALL MOUNTS, modelled in the form of lion masks. 20cm high; together with two pairs of cast iron boot scrapers, each with classical head terminals. Approx. 41cm long. (6)

€ 400 - 600



497 A VICTORIAN BURR WALNUT GAMES BOX, retailed by Benetfink & Co., Games Dept., Cheapside, London, with hinged cover over doors containing a fitted and compartmented interior, with a Staunton pattern chess set in boxwood, some stamped with red crown mark, various ebon and bone domino pieces, draughts pieces and coloured counter chips. The kings 6.75cm high, the box 33cm wide

€ 300 - 500



498 A PORTUGUESE 'PALISSY' STYLE MAJOLICA DISH, 19th Century, of circular form, modelled with large lobster to the centre, surrounded by mussels and oysters. 32cm diameter
€ 300 - 500



499 A PAIR OF EARLY 20TH CENTURY KASHMIRI LACQUERED AND PAINTED PAPIER MACHE CANDLESTICKS, the urn shaped sconces raised on open spiral turned columns, decorated in the traditional floral pattern and raised on circular bases. 52cm high
€ 150 - 250



500 A BOHEMIAN RUBY AND ETCHED GLASS CASKET, 19th century of rectangular form, with hinged cover decorated with stag in a woodland, similarly engraved to the front and side panels. 19cm wide x 15cm high
€ 100 - 200



501 A LARGE GERMAN POLYCHROME GLAZED POTTERY MODEL OF A ROOSTER, 19th/20th century, standing by a corn bale, underglazed crossed swords mark to base. 78cm high
€ 0 - 0



502 A CHINESE BLUE AND WHITE EXPORT PORCELAIN BOWL, c. 1800 of deep circular form painted with a figures and pagodas in a river and mountain landscape, the interior decorated with a coiled dragon encircled by a double ring border, Kangxi mark to base. 21cm diameter
€ 150 - 250



503 A 19TH CENTURY MEISSEN PASTILLE BURNER, formed as two-handled tureen raised on a warming stand, a cross swords mark to the base, together with a pair of 19th century gilt ground two-handle chocolate cups and stands, an Augustus Rex mark to verso and a miniature gourd companion vase. 12cm high and a small collection.
€ 200 - 300



504 A PART TEA SET, PROBABLY DERBY, early 19th century, richly gilded on a blue hatched ground, decorated with bands of spring flowers, pattern no.2/111, comprising a sugar bowl and cover, a milk jug, a slop bowl, three plates and twelve tea/coffee cups and saucers

€ 200 - 300



505 AN AUSTRIAN GILT AND RUBY GROUND PORCELAIN STEIN, Vienna c.1880, the broad reserve hand painted with 'The Triumph of Constantine' and signed 'Joeger Pinxt', applied with leaf cast scroll handle, raised thumb piece and domed cover, on an outset giltmetal foot, Bidenschild mark in underglaze blue and entitled in red. 36cm high

€ 1,200 - 1,800



507 A PAIR OF BERLIN PORCELAIN STANDING FIGURES, 19th century, modelled as male and female harvesters, each dressed in period costume holding grape vines before an oval basket, sceptre and KPM factory marks. Approx. 23cm high

€ 400 - 600



508 A PAIR OF SPODE PORCELAIN TWO HANDLE JARS AND COVERS, mid 19th century, each of globular form with floral gilt borders above a pale ground with groups of cherubs in relief, impressed factory mark to base. 25cm high

€ 250 - 350



509 AN EDWARDIAN POLISHED WALNUT MINIATURE CHEST ON CHEST, the moulded rectangular top with rounded fore-corners, above four long drawers, each applied with brass quatrefoil handles, and raised on small turned feet. 39cm high x 35cm wide x 22cm deep

€ 200 - 300



510 A PAIR OF FIGURAL STAFFORDSHIRE STIRRUP CUPS MODELLED AS 'THE FOX AND THE HOUND', 19th century. The fox head 13cm long, the hound head 12cm long

€ 300 - 500



511 A BELLEEK CHINA THREE STRAND SHAMROCK BASKET (1891-1920), the spiral turned rim set with three rose head sprays, the base with strapwork inscription "Belleek, Co. Fermanagh, Ireland". 17 x 16cm

Literature: Degenhardt, ref. D.110

€ 400 - 500



512 A LATE 19TH CENTURY SEVRES PORCELAIN OIL LAMP, in the form of a Corinthian Column, the reservoir painted with musical and armory trophies and portrait panels of Napoleon I and Josephine de Beauharnais, each panel divided by green and gilt acanthus leaves, with conforming decoration to the base. 73cm high
€ 120 - 180



513 A 19TH CENTURY GERMAN TORTOISESHELL AND ORMOLU MANTEL CLOCK, of architectural form, the case with applied cast brass mounts in the form of acanthus leaves, flaming torches and human busts to each corner, the dial with Roman numerals and decorated with foliate design, enclosed by a hinged glass door, the back plate stamped 'LENZ-KIRCH' raised on ormolu circular feet. 45cm tall
€ 1,500 - 2,500



514 A PAIR OF EARLY 19TH CENTURY 'OLD WATERFORD' CUT GLASS BUTTER DISHES, of circular form, the lids with mushroom finials with hobnail cut decoration, lobed cut rims and diamond cutting. 17cm diameter
€ 2,000 - 3,000



515 AN EARLY 19TH CENTURY CLEAR GLASS GOBLET, of flared circular form, with fine hobnail cut banding, later engraved with "Boyne, 1st July 1690" within a wreath and a portrait of William of Orange on horseback and inscribed "The Glorious & Immortal Memory of William Third / Prince of Orange". 15cm high
€ 300 - 500



516 A CONTEMPORARY ETCHED GLASS VASE signed Grefors Lindstrand decorated with birds in flight to one side, the other with a kneeling saint. 19cm high; together with an art deco marine vase signed with initials H.A and dated 1839. 13cm high and small collection. (5)

€ 100 - 200



517 AN ARTS AND CRAFTS MOVEMENT HAND HAMMERED OVAL COPPER TRAY, the wide rim decorated with a silvered lozenge border, stamped 'HW'. 33 x 45.5cm

€ 100 - 150



518 AN ACKROYD AND BEST LTD BLACKENED METAL, COPPER AND BRASS CYLINDRICAL MINER'S LAMP, stamped with miner's reference number; together with two 19th century hand held oil lamps complete with fuel containers and wicks. (3)

€ 80 - 120



519 A CIRCULAR PEWTER PLATE. 24.5cm diameter; together with two pewter counter saucers, stamped B & P, London. 10.2cm diameter (3)

€ 40 - 60

520 A LADY'S EBONY WALKING STICK, with 1924 Birmingham silver mounts. 92cm long; together with a Victorian gentleman's walking stick with 1894 Birmingham silver mounts. 91cm long (2)

€ 0 - 0

521 AN IRISH EARLY 19TH CENTURY MALLETT SHAPED DECANTER, the partially fluted body engraved with Act of Union motifs including shamrocks, thistles and roses, a circular initialed starburst beneath the legend 'The land we live in'. 24cm high

€ 200 - 400



520



522 A PAIR OF VIENNESE STYLE PORCELAIN URNS, of circular baluster form, having twin handles, the bodies decorated with mythological figural scenes and raised on pedestals decorated in deep blue and gilt. 27cm high
€ 500 - 800



523 A 19TH CENTURY COALPORT CHINA PART DINNER SERVICE, comprising a selection of dinner plates, side plates, soup bowls and vegetable tureens, each decorated in deep blue with gilt scroll borders, factory mark to base
€ 200 - 400



524 A SELECTION OF FIRESIDE BRASSES, comprising scuttle, fireguard, shovel etc.
€ 300 - 400



525 A LAQUERED AND MOTHER OF PEARL SCENT CADDY, decorated in the oriental manner; together with a matched pair of painted oval porcelain plaques, with gilt brass frames. (3)
€ 150 - 250



526 A GEORGE IV MAHOGANY RECTANGULAR SIDE CABINET, with beaded rim raised above twin wire grille panel doors, raised on carved paw feet. 137cm wide x 31cm deep x 100cm high

€ 500 - 700



527 A STAINED BENT-WOOD HAT AND COAT STAND, raised on a quadrupled base. 204cm high

€ 100 - 200



528 AN ONYX MANTLE CLOCK, of architectural form with applied brass mounts. 26.5cm high

€ 200 - 300



529 AN EDWARDIAN INLAID MAHOGANY FOLDING TOP CARD TABLE, of rectangular form and raised on square tapering legs

€ 200 - 400



530 A 19TH CENTURY WALNUT OCCASIONAL TABLE, c.1870, of shaped rectangular form, the figured top with rounded corner above a conforming frieze, on arched scroll end supports, cross-stretcher and brass castors. 48cm high, 104cm wide, 53cm deep

€ 250 - 350



531 A 19TH CENTURY INLAID MAHOGANY RECTANGULAR SHAPED SIDE TABLE, the crossbanded top raised above a plain frieze on square tapering legs and spade feet. 11.5 x 55cm

€ 300 - 500



532



535

532 A SET OF SIX VICTORIAN BALLOON BACK DINING CHAIRS, with incised line decoration, padded seats covered in red faux hide and raised on baluster reeded legs

€ 800 - 1,200

533 A VICTORIAN MAHOGANY LONGCASE CLOCK BY DOBBYN OF DUBLIN, the arched hood with gothic motifs and an inscribed painted dial above a waisted base and raised on bracket feet. 209cm high

€ 700 - 1,000

534 A PAIR OF GEORGE IV MAHOGANY SEMI ELLIPTICAL SIDE TABLES, with plain frieze and raised on square tapering banded legs. 130cm wide x 55cm deep

€ 400 - 600

535 A SET OF SIX VICTORIAN MAHOGANY DINING CHAIRS, with compressed balloon backs, having buttoned padded seats and raised on turned tapering legs. (6)

€ 800 - 1,200



536 A PLAIN MAHOGANY RECTANGULAR DOUBLE DROP LEAF TABLE, raised on reeded square legs. 137 x 106cm
€ 250 - 350



537 A PAIR OF VICTORIAN CARVED AND STAINED OAK SIDE CHAIRS, with carved foliate splat backs, solid seats and raised on turned and block legs and cross stretchers
€ 500 - 600



538 A CARVED BEECH FRAMED COMPACT OVERMANTLE MIRROR decorated in the Chinese taste. 73 x 101cm
€ 250 - 350



539 A FRENCH ORMOLU MOUNTED PORCELAIN JARDINIERE, in Louis XVI style, the cobalt blue ground applied with raised reeded side handles and female masks joined by ribbon tied floral swags on a waisted and domed circular foot. 39cm hgh x 45cm wide
€ 500 - 800



540 A SET OF FOUR FRENCH GILTWOOD AND UPHOLSTERED SALON CHAIRS, c.1900, each with a ribbon tied top rail above turned and fluted column supports, with olive button upholstered seat and fluted forelegs
€ 800 - 1,200



541 A VICTORIAN WALNUT OVAL CENTRE TABLE, the quarter veneered top with moulded rim raised above a foliate carved centre pillar of turned baluster form on four scroll legs and with ceramic casters. 147 x 106cm
€ 1,500 - 2,000



542 A 19TH CENTURY GEORGE III STYLE MAHOGANY TALL BOY CHEST, of two short and six long graduated drawers with brass handles and cast urn escutcheons raised on short cabriole legs with claw and ball feet
€ 500 - 800



543 A GEORGE IV INLAID MAHOGANY BOWFRONT SIDEBOARD, fitted with two long centre drawers, one with ring handles, the other recessed front, flanked by twin panel door cupboards and raised on ring turned legs. 154.5 x 59cm
€ 300 - 500



544 A PAIR OF CARVED AND GILDED TIMBER WALL BRACKETS, of shaped rectangular form, raised on short leaf carved corbels. 21cm wide x 16cm deep x 18cm high
€ 100 - 200



545 A LARGE FRENCH BRASS FRAMED AND GLASS TWO-TIER CHANDELIER, with thirty branches, the candle lamps with circular drip pans and decorated with pendants, icicle drops and bead swags, electrified. 73cm drop, 100cm diameter
€ 800 - 1,200



546 A PAIR OF COMPOSITE STONE GARDEN URNS, with cast swags in relief. 32cm high x 38cm diameter
€ 200 - 300



547 A GEORGE IV INLAID MAHOGANY SEMI-ELLIPTICAL FOLDING TOP TEA TABLE, the plain top above a frieze, centred with an oval pattern, and raised on tapering banded legs.
€ 400 - 600



548 TWO GEORGE III MAHOGANY DINING CHAIRS, each with scroll backs and pierced splats, fan shaped, drop in seats on square tapering legs; together with a similar 19th century carver. (3)
€ 800 - 1,200



549 AN EARLY VICTORIAN MAHOGANY BOWFRONT SIDE TABLE, with three frieze drawers on ring turned legs. 122cm wide
€ 400 - 600



550 A GEORGE IV PIERCED BRASS FENDER, the reeded pierced panels spaced with oval patera with bordered beaded banding. 134cm wide
€ 250 - 350



551 A VICTORIAN MAHOGANY FRAMED CHEVAL GLASS, the domed top on scroll side supports and scroll feet. 165cm high
€ 600 - 800



552 A NORTHERN EUROPEAN MAHOGANY RECTANGULAR
COMMUNE,
the plain top above three long drawers, inset with ebonised panels,
flanked by applied brass pilasters, and raised on square tapering legs.
120cm wide x 54.5cm deep x 76cm high
€ 700 - 1,000



553 A GEORGE IV GILTWOOD RECTANGULAR
OVERMANTLE MIRROR,
within scroll frame and triple compartment, flanked by fluted pilaster.
137cm wide
€ 800 - 1,200

557 A GEORGE IV MAHOGANY RECTANGULAR DOUBLE
DROP LEAF SOFA TABLE,
with moulded rim above twin frieze drawers and twin dummy drawers
and raised on turned reeded tapering legs. 76 x 149cm
€ 200 - 300



558 A GEORGE III HAREWOOD AND MAHOGANY
CROSSBANDED SEMI-ELLIPTICAL TEA TABLE,
c. 1790 with folding top and gate leg supports, the bowed frieze with
shaped ebon strung panels on squared tapering supports. 73cm high
x 91cm wide.
€ 600 - 1,000



559 A VICTORIAN WALNUT AND MARQUETRY INLAID SIDE
CABINET
of rectangular form, with moulded top above broad frieze inlaid with
dancers and foliage, the glazed panel door enclosing a shelved interior
flanked by ormolu mounted uprights on outset plinth base. 115cm
high x 84cm wide x 31cm depth.
€ 300 - 500





560 AN EDWARDIAN MAHOGANY TALL CHEVAL MIRROR, the crutch side supports with urn finials. 164cm high, 63cm wide
€ 100 - 200



561 A MAHOGANY FRAMED RECTANGULAR PIANO STOOL with hinged seat, raised on turned legs, together with a long rectangular foot stool raised on short cabriole legs. 110 x 30cm (2)
€ 200 - 300



562 AN EDWARDIAN SHERATON CURVED RAIL BACK SIDE CHAIR with pierced splats, padded seat and raised on square tapering legs; together with an Edwardian Louis style mahogany elbow chair with foliate carved splat back on cabriole legs (2)
€ 300 - 500



563 A 19TH CENTURY GRADUATED TWO-TIER CIRCULAR DUMB WAITER, the tiers with drop leaves and raised on tripod supports. 89cm high
€ 150 - 250



564 AN EDWARDIAN INLAID MAHOGANY SQUARE TAPERING PEDESTAL, with satinwood crossbanding and ebon stringing on stepped base, 106cm high; together with a mahogany reeded torchère with circular top. 11cm high (2)
€ 150 - 250



565 A VICTORIAN PAPIER MACHÉ SHAPED RECTANGULAR TRAY with painted foliate sprays and centred with a garden fountain. 58.5 x 78.5cm
€ 150 - 250



566 A GEORGIAN STYLE MAHOGANY GRADUATED THREE TIER CIRCULAR DUMB WAITER, raised on tripod supports. 100cm high
€ 200 - 300



567 AN EDWARDIAN MAHOGANY TWO-FOLD TOWEL RAIL, decorated with Chinese pierced fret brackets. 95cm high; and two mahogany rectangular framed fire screens (3)
€ 80 - 100



568 A 19TH CENTURY MAHOGANY CIRCULAR WINE TABLE with cavetto rim and raised on turned centre pillar tripod supports. 40cm diameter; together with a mahogany circular tray with cavetto rim. 51.5cm diameter (2)
€ 150 - 250



569 AN EDWARDIAN MAHOGANY FRAMED RECTANGULAR STOOL, the frame with reeded decoration and raised on turned tapering legs (upholstered and prepared for fabric). 62 x 54cm
€ 150 - 250



570 A 19TH CENTURY MAHOGANY FRAMED RECTANGULAR STOOL with drop-in seat, curved ends and raised on 'X' frame supports. 51 x 42cm; together with a tall upholstered rectangular stool on turned legs. 43 x 35 x 46cm high (2)
€ 200 - 400



571 A VICTORIAN OAK CIRCULAR REVOLVING 'LAZY SUSAN' TABLE with dished rim on turned weighted base. 58cm diameter
€ 150 - 250



572 SCOTTISH SCHOOL, 19TH CENTURY
An Extensive Loch Scene with Figures, a Castle and Cattle Watering in the Distance
Oil on canvas, 48 x 101cm
€ 1,500 - 2,000



573 DUTCH SCHOOL (18TH CENTURY)
Figures and Cattle in a Courtyard
Oil on panel, 28 x 35cm
€ 400 - 600



574 WILLIAM MCDOWELL (1905-1986)
Fishing Boat at Sea, Sunset
Oil on canvas, 41 x 61cm
Signed
€ 800 - 1,200



575 EDWIN HENRY BODDINGTON (1836-1905)
Loch Kindarochy with Schiehallion, Scotland in the distance
Oil on canvas, 50 x 75cm
Signed
€ 400 - 600



576 BALTHASAR-ANTON DUNKER (1746-1807)
 Vue de Morat, Vue d'Avenche
 A pair, coloured aquatints, 30 x 42cm
 Published by de Mechel (Basle)
 € 600 - 1,000



577 JOSEPH EMMANUEL CURTY (1750-1813)
 Vue prise dans la Gorge du Gotteron près de Fribourg, Swiss views,
 early 19th century
 A pair, pencil, each 27 x 40cm
 Each signed and inscribed;
 together with a set of three aquatints of Swiss views, each 11 x 18cm;
 and a coloured costume print "Paysanne du Cantal du Wallais. (6)
 € 300 - 400



578 NEIL CAWTHORNE (B.1936)
 The Quorn Hunt
 Oil on canvas, 50 x 70cm
 Signed and dated, 1970.
 € 400 - 600



579 DUTCH SCHOOL (18TH CENTURY)
 Figures and Cattle by a River
 Oil on oak panel, 19.5 x 30cm
 € 200 - 300



580 ITALIAN SCHOOL (17TH CENTURY)
Belisarius Begging
Oil on oak panel, 32 x 22cm
€ 500 - 700



581 ALEXANDER WILLIAMS RHA
(1846-1930)
The Cobblers Shop, Wormwood Gate
1890
Watercolour, 36.5 x 26cm (14 1/4 x 10 1/4")
Signed
€ 300 - 400



582 WILLIAM BINGHAM
MCGUINNESS RHA (1849-1928)
Docked Ships in a Continental Town
Watercolour, 45.5 x 30.5cm (18 x 13 3/4")
Signed
€ 200 - 300



583 AFTER DAVID ROBERTS RA
Jacob's Well at Shechem
Lithograph, 30 x 45cm
€ 250 - 350



584 ITALIAN SCHOOL, 19TH CENTURY, AFTER RAPHAEL
Madonna of the Goldfinch
Watercolour on ivory, 17 x 12cm
€ 200 - 300



585 ROB RICHIE (B.1965)
Still Life with Wine, Fruit and Cheese on a Table
Oil on canvas, 41 x 30.5cm
Signed
€ 500 - 800



586 ROGER DE LA CORBIERE (1893-1974)
A Sunset Shore Scene
Oil on canvas, 46 x 76cm
Signed
€ 400 - 600



587 THE KINGDOM OF IRELAND BY ROBT. MORDEN
Sold by Abel Swale Awnfham & John Churchill
€ 0 - 0



588 JAPANESE SCHOOL (C.1900)
Carp amongst Reeds
A pair, watercolour, 26.5 x 22cm
Signed
€ 300 - 500



589 EDMUND G. FULLER (FL.1893-1904)
Figures in a Rowing Boat off a Rocky Headland
Watercolour, 24 x 34cm
Signed and initialled
€ 150 - 250



590 CONTINENTAL SCHOOL (20TH CENTURY)
Still Life with Flowers, Fruit and Pottery
Oil on canvas, 40 x 50cm
Signed indistinctly
€ 100 - 200



591 W.G. ROGERS (19TH/ 20TH CENTURY)
The Defence of Clanwilliam House, Easter 1916
Oil on board, 40 x 51cm
€ 500 - 800



592 A GEORGE IV MAHOGANY SECRETAIRE BOOKCASE, the plain moulded cornice with applied roundel terminals, over twin arched glazed doors, the pull-out drawer revealing a fitted interior above crossbanded cupboard base, 270cm high x 130cm wide

€ 0 - 0



593 A GILT BRASS SIX BRANCH ELECTROLIER, fitted glass icicle drops, pendent drops and drip pans, the frame terminating with a faceted ball. 32cm high

€ 100 - 150



594 A COMPOSED SET OF TEN GEORGE III STYLE MAHOGANY FRAMED DINING CHAIRS, with pierced vase shaped splats, padded seats and raised on chamfered square legs and stretchers, eight single and two elbow chairs

€ 800 - 1200



595 A HARLEQUIN SET OF SEVEN VICTORIAN MAHOGANY DINING CHAIRS, each with green fabric upholstery and raised on turned legs. (7)

€ 200 - 400



596 A VICTORIAN MAHOGANY FRAMED SALON CHAIR, with inset padded back and seat covered in striped material and raised on turned legs and 'H' stretcher

€ 80 - 100



597 A GEORGIAN STYLE MAHOGANY RECTANGULAR MURAL TABLE, the top with gadroon rim above a pierced and heavily carved apron, centred with a human mask flanked by foliate scrollwork, raised on mask headed cabriole legs and heavy hairy paw feet. c.160cm wide x c.66cm deep

€ 1,500 - 2,500



598 A JAPANESE EBONISED TWO FOLD SCREEN
with inset panels lacquered and with mother of pearl inlaid decorative scenes depicting birds in trees. Each panel 177cm high x 68cm wide
€ 300 - 400



599 A SET OF FOUR EDWARDIAN INLAID MAHOGANY DINING CHAIRS,
with curved rail backs having oval satinwood panels, padded seats and raised on square supports
€ 200 - 400



600 AN EARLY 19TH CENTURY GILTWOOD UPRIGHT RECTANGULAR WALL MIRROR,
with moulded cornice above engaged pilasters flanking an ebon reeded framed plate on platform base. 69 x 56cm
€ 100 - 200



601 A GEORGE IV INLAID BOW FRONT SIDEBOARD,
with raised back above frieze drawer and cupboard flanked by single door cupboards, inlaid with urns, raised on square tapering legs. 150cm wide
€ 300 - 400



602 AN EARLY 19TH CENTURY INLAID WALNUT OCTAGONAL FOLDING-TOP CARD TABLE
with rosewood crossbanding and boxwood stringing, raised on square tapering legs and spade feet. 91 x 45cm
€ 200 - 300



603 A 19TH CENTURY INLAID MAHOGANY HALF CIRCULAR FOLDING TOP CARD TABLE,
with boxwood stringing and chequered banding raised on square tapering legs. 92 x 45.5cm
€ 300 - 500



604

604 AN EDWARDIAN UPHOLSTERED LONG DAY-BED with button back and loose squab cushion raised on upturned bell supports. 175cm long, 74cm wide
€ 80 - 120



605 A LATE 19TH CENTURY CAST BRASS CURB RAIL FENDER, with raised scroll ends, the front rail with urn finials on platform base. 138 x 39cm
€ 150 - 250

606 AN EDWARDIAN MAHOGANY FOLDING TOP PATIENCE TABLE, of square form, the top enclosing a baize lined interior above single frieze drawer and square tapering supports. 71cm high x 51cm wide x 51cm deep
€ 250 - 350

607 A PAIR OF SMALL BRASS FRAMED CIRCULAR TIERED ICICLE DROP CEILING LIGHTS. 21cm diameter, 29cm high
€ 100 - 200



609 A 19TH CENTURY MAHOGANY AND PAINTED DEMI LUNE CARD TABLE, with folding top painted with cherubs and classical ribbon tied swags. 75cm high x 91cm wide x 39cm deep
€ 600 - 800

609



610 A 19TH CENTURY GILTWOOD PIER MIRROR, of rectangular form, with honeycomb frieze above a chinoiserie painted panel and plain glass plate, flanked by cluster column uprights. 126 x 64cm
€ 300 - 500



611 AN EDWARDIAN INLAID MAHOGANY CURIO CABINET, of rectangular form with glazed hinged top and four glass frieze panels enclosing a velvet lined interior, on squared tapering supports. 61cm wide x 41cm deep
€ 250 - 350



612 AN EDWARDIAN BRASS COLUMN STANDARD LAMP, with reeded column raised on shaped tripod supports and claw feet, with pink silk shade. 147cm high
€ 250 - 300

613 AN EDWARDIAN INLAID MAHOGANY RECTANGULAR CURIO TABLE, c.1900, with glazed hinged top and side panels, fabric lined interior on square tapering supports joined by raised undertier. 61 x 41cm
€ 250 - 350



613

615 A 19TH CENTURY BRASS OIL LAMP, with circular reservoir decorated with beading and with reeded banding, raised on a square pillar and spreading foot, complete with glass funnel and etched glass globular shade. 55cm high to top of shade
€ 250 - 350



616

616 A FRENCH MID-CENTURY BRASS FRAMED OCCASIONAL TABLE IN THE MANNER OF MAISON JENSON, with two-tiers covered in gilt-tooled black leather. 68 x 38 x 74cm high
€ 250 - 350



617

617 A MODERN GREEN PAINTED TIMBER AND BRASS RECTANGULAR OCCASIONAL TABLE, the top decorated with gilded bird in a tree and raised in bamboo style supports. 45 x 53cm; together with three modern hardwood waste paper bins (4)
€ 100 - 200

618 A FRENCH EMPIRE STYLE OIL LAMP, with green glass acid etched shade, the reservoir with applied pierced gilt metal decoration and supported by three winged caryatids, on concave platform base. 71cm high
€ 150 - 250



619 AN EDWARDIAN MAHOGANY INLAID KIDNEY SHAPED TRAY, with raised chequered inlaid gallery, applied twin brass handles, and inlaid conical shell decoration to centre. 58cm wide over handles
€ 120 - 180



620 A MAHOGANY TALL PILLAR TORCHÈRE with circular top on fluted tapering pillar and tripod supports. 155cm high
€ 100 - 200



621 A 17TH CENTURY STYLE STAINED AND CARVED OAK SLOPE TOP BIBLE BOX, with hinged lid enclosing a fitted interior with three drawers and with carved fascia. 60 x 47 x 28cm high
€ 250 - 350



622

- 622 DIANA COWDY (1918-2004)
Still life study of flowers in a cut glass vase
Oil on board, 29 x 25cm
Signed and dated 'Spring 1978'
Together with a coloured print of horse-
man at Windsor Castle (2)

€ 100 - 150

- 623 JAY BOYD KIRKMAN (B.1958)
Saddling box
Etching, artist's proof, 33 x 12cm
Signed and inscribed

€ 60 - 100

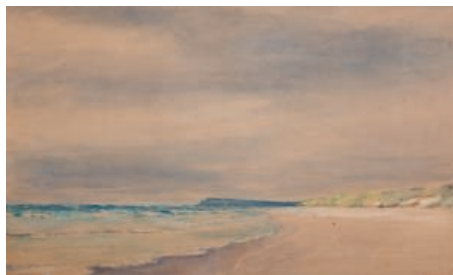
- 624 ENGLISH SCHOOL C.1940
Boats in a harbour at low tide and Boat
at low tide
Watercolour, 27 x 35cm
(2)

€ 200 - 300



- 625 EDMUND BLAMPIED (1886-
1966)
Camel traders
Etching, 24 x 33.5cm
Signed and numbered 95/100

€ 200 - 300



- 626 ISAAC SWAIN (20TH CENTURY)
Portrush
Watercolour, 44 x 73cm
Signed and inscribed

€ 200 - 300



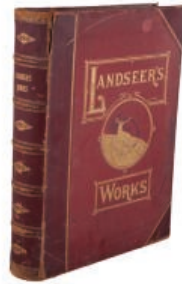
- 627 WILLIAM GALLOWAY
(19TH/20TH CENTURY)
Sketterick Castle
Watercolour, 25 x 49cm
Signed, dated 1914 and inscribed

€ 200 - 400



- 628 TWO 19TH CENTURY LONG BOWS,
with coloured strapping. 216cm tall

€ 80 - 120



- 629 THE WORKS OF SIR EDWIN LANDSEER RA
With a history of his Art-Life by W. Cosmo Monkhouse, published by J.S. Virtue & Co., illustrated with forty-four steel engravings and c.200 woodcuts

€ 100 - 200



- 630 PICTURESQUE EUROPE
With illustrations on steel and wood by the most eminent artists, nine volumes, published by Cassell & Co. London

€ 100 - 200



- 631 THE ORIGINAL WATERCOLOUR PAINTINGS BY JOHN JAMES AUDOBON FOR THE BIRDS OF AMERICA,
published by American Heritage Publishing Co. Inc. 1966, in two volumes

€ 40 - 60

- 632 AVEDON, RICHARD
Observations with comments by Truman Capote, First Edition c.1959, hardback, signed inside cover by the photographer

€ 200 - 300



632

- 633 MIDDLETON RARE IRISH WHISKEY 1984
Midleton, Co. Cork 2 btls., 75cl., Barry Crockett in Original Cardboard Cartons, one carton inscribed with personal inscription. (2)

This is the very first vintage of Midleton Very Rare and is highly sought after due to its scarcity.

€ 800 - 1,200

- 634 CHATEAU LAFITE ROTHSCHILD 1960
Pauillac, France
1btl., 75cl.; together with
Möet et Chandon Dom Pérignon Cuvée 1971
Champagne, France
1 btl., 75cl.; and
Chateau Cantenac Brown 1973
Margaux, France
1 btl., 73cl. (3)

€ 500 - 800

- 635 COMPAÑIA VINICOLA 1982
Imperial Gran Reserva, Rioja, Spain
2 magnums, 1.5L, cased; together with

Daniel Bouju Cognac,
Grande Champagne VSOP, France
1 btl., 70cl, cased. (3)

€ 250 - 350

GENERAL TERMS & CONDITIONS OF BUSINESS

The Auctioneer carries on business on the following terms and conditions and on such other terms or conditions as may be expressly agreed with the Auctioneer or set out in any relevant Catalogue. Conditions 12-21 relate mainly to buyers and conditions 22-32 relate mainly to sellers. Words and phrases with special meanings are defined in condition 1. Buyers and sellers are requested to read carefully the Cataloguing Practice and Catalogue Explanation contained in condition 2.

DEFINITIONS

1. In these conditions the following words and expressions shall have the following meanings:

Auctioneer - James Adam and Sons trading as Adam's.

Auctioneer's Commission - The commission payable to the Auctioneer by the buyer and seller as specified in conditions 13 and 25.

Catalogue - Any advertisement, brochure, estimate, price or other publication.

Forgery - A Lot which was made with the intention of deceiving with regard to authorship, culture, source, origin, date, age or period and which is not shown to be such in the description therefore in the Catalogue and the market value for which at the date of the auction was substantially less than it would have been had the Lot been in accordance with the Catalogue description.

Hammer Price - The price at which a Lot is knocked down by the Auctioneer to the buyer.

Lot - Any item which is deposited with the Auctioneer with a view to its sale at auction and, in particular, the item or items described against any Lot number in any Catalogue.

Proceeds of Sale - The net amount due to the seller being the Hammer Price of the Lot after deducting the Auctioneer's Commission thereon under condition 25 the seller's contribution towards insurance under condition 26, such VAT as is chargeable and any other amounts due by the seller to the Auctioneer in whatever capacity howsoever arising.

Registration Form or Register - The registration form (or, in the case of persons who have previously attended at auctions held by the Auctioneer and completed registration forms, the register maintained by the Auctioneer which is compiled from such registration forms) to be completed and signed by each prospective buyer or, where the Auctioneer has acknowledged pursuant to condition 12 that a bidder is acting as agent on behalf of a named principal, each such bidder prior to the commencement of an auction.

Sale Order Form - The sale order form to be completed and signed by each seller prior to the commencement of an auction.

Total Amount Due - The Hammer Price of the Lot sold, the Auctioneer's Commission due thereon under condition 13, such VAT as is chargeable and any additional interest, expenses or charges due hereunder.

V.A.T. - Value Added Tax.

Cataloguing Practice & Catalogue Explanations

2. Terms used in Catalogues have the following meanings and the Cataloguing Practice is as follows:

The first name or names and surname of the artist - In the opinion of the Auctioneer a work by the artist.

The initials of the first name(s) and the surname of the artist - In the opinion of the Auctioneer a work of the period of the artist and which may be in whole or in part the work of the artist.

The surname only of the artist - In the opinion of the Auctioneer a work of the school or by one of the followers of the artist or in his style.

The surname of the artist preceded by 'after' - In the opinion of the Auctioneer a copy of the work of the artist.

Signed/Dated/Inscribed - In the opinion of the Auctioneer the work has been signed/dated/inscribed by the artist.

With Signature/With date/With inscription - In the opinion of the Auctioneer the work has been signed/dated/inscribed by a person other than the artist.

Attributed to - In the opinion of the Auctioneer, probably a work of the artist.

Studio of/Workshop of - In the opinion of the Auctioneer a work executed in the studio of the artist and possibly under his supervision.

Circle of - In the opinion of the Auctioneer a work of the period of the artist and showing his influence.

Follower of - In the opinion of the Auctioneer a work executed in the artist's style yet not necessarily by a pupil.

Manner of - in the opinion of the Auctioneer a work executed in artist's style but of a later date.

None of the terms above are appropriate but in the Auctioneer's opinion the work is a work by the artist named.

GENERAL CONDITIONS

Auctioneer Acting as Agent

3. The Auctioneer is selling as agent for the seller unless it is specifically stated to the contrary. The Auctioneer as agent for the seller is not responsible for any default by the seller or the buyer. The auctioneer reserves the right to bid on behalf of the seller.

Auctioneer Bidding on behalf of Buyer

4. It is suggested that the interests of prospective buyers are best protected and served by the buyers attending at an auction. However, the Auctioneer will, if instructed, execute bids on behalf of a prospective buyer. Neither the Auctioneer nor its employees, servants or agents shall be responsible for any neglect or default in executing bids or failing to execute bids.

Admission to Auctions

5. The Auctioneer shall have the right exercisable in its absolute discretion to refuse admission to its premises or attendance at its auctions by any person.

Acceptance of Bids

6. The Auctioneer shall have the right exercisable in its absolute discretion to refuse any bids, advance the bidding in any manner it may decide, withdraw or divide any Lot, combine any two or more Lots and, in the case of a dispute, to put any Lot up for auction again.

Indemnities

7. Any indemnity given under these conditions shall extend to all actions, proceedings, claims, demands, costs and expenses whatever and howsoever incurred or suffered by the person entitled to the benefit of the indemnity and the Auctioneer declares itself to be a trustee of the benefit of every such indemnity for its employees, servants or agents to the extent that such indemnity is expressed to be for their benefit.

Representations in Catalogues

8. Representations or statements made by the Auctioneer in any Catalogue as to contribution, authorship, genuineness, source, origin, date, age, provenance, condition or estimated selling price or value is a statement of opinion only. Neither the Auctioneer nor its employees, servants or agents shall be responsible for the accuracy of any such opinions. Every person interested in a Lot must exercise and rely on their own judgment and opinion as to such matters.

9. The headings of the conditions herein contained are inserted for convenience of reference only and are not intended to be part of, or to effect, the meaning or interpretation thereof.

Governing Law

10. These conditions shall be governed by and construed in accordance with Irish Law.

Notices

11. Any notice or other communication required to be given by the Auctioneer hereunder to a buyer or a seller shall, where required, be in writing and shall be sufficiently given if delivered by hand or sent by post to, in the case of the buyer, the address of the buyer specified in the Registration Form or Register, and in the case of the seller, the address of the seller specified in the Sale Order Form or to such other address as the buyer or seller (as appropriate) may notify the Auctioneer in writing. Every notice or communication given in accordance with this condition shall be deemed to have been received if delivered by hand on the day and time of delivery and if delivered by post three (3) business days after posting.

CONDITIONS WHICH MAINLY CONCERN THE BUYER

The Buyer

12. The buyer shall be the highest bidder acceptable to the Auctioneer who buys at the Hammer Price. Any dispute which may arise with regard to bidding or the acceptance of bids shall be settled by the Auctioneer. Every bidder shall be deemed to act as principal unless the Auctioneer has prior to the auction, acknowledged in writing that a bidder is acting as agent on behalf of a named principal.

The Commission

13. The buyer shall pay the Auctioneer a commission at the rate of 20% of the Hammer Price, exclusive of VAT at the applicable rate on all individual lots.

Payment

14. Unless credit terms have been agreed with the Auctioneer before the auction the buyer of a Lot shall pay to the Auctioneer within one (2) days from the date of the auction the Total Amount Due. Notwithstanding this, the Auctioneer may, in its sole discretion, require a buyer to pay a deposit of 25% of the Total Amount Due at the conclusion of the auction.

The Auctioneer may apply any payments received by a buyer towards any sums owing from that buyer to the Auctioneer on any account whatever regardless of any directions of the buyer or his agent in that regard whether express or implied.

The Auctioneer shall only accept payment from successful bidders in cash, draft in Euro or by the bidder's own cheque drawn on an Irish bank account vouched to the satisfaction of the Auctioneer. Cheques drawn by third parties, whether in the Auctioneer's favour or requiring endorsement, shall not be accepted. We also accept payment by credit card, Visa & Mastercard subject to a administration charge of 2% of the total amount due. American Express 3.65% administration charge. We also accept debit card payments by way of Laser, with no surcharge, however the cardholder in person can only make the payment.

Reservation of Title

15. Notwithstanding delivery or passing of risk to the buyer the ownership of a Lot shall not pass to the buyer until he has paid to the Auctioneer the Total Amount Due.

Collection of Purchases

16. The buyer shall at his own expense collect the Lot purchased not later than seven (2) days after the date of the auction but (unless credit terms have been agreed with the Auctioneer pursuant to condition 14) not before payment to the

Auctioneer of the Total Amount Due.

The buyer shall be responsible for any removal, storage and insurance charges in respect of any Lot which is not taken away within seven (2) days after the date of the auction.

The purchased Lot shall be at the buyer's risk in all respects from the earlier of the time of collection or the expiry of (2) days from the date of the auction. Neither the Auctioneer nor its employees, servants or agents shall thereafter be liable for any loss or damage of any kind howsoever caused while a purchased Lot remains in its custody or control after such time

Packaging and Handling of Purchased Lots

17. Purchased Lots may be packed and handled by the Auctioneer, its employees, servants or agents. Where this is done it is undertaken solely as a courtesy to buyers and at the discretion of the Auctioneer. Under no circumstances shall the Auctioneer, its employees, servants or agents be liable for damage of any kind and howsoever caused to glass or frames nor shall the Auctioneer be liable for the errors or omissions of, or for any damage caused by, any packers or shippers which the Auctioneer has recommended.

Non-Payment or Failure to Collect Purchased Lots

18. If a buyer fails to pay for and/or collect any purchased Lot by the dates herein specified for payment and collection the Auctioneer shall, in its absolute discretion and without prejudice to any other rights or remedies it may have, be entitled to exercise one or more of the following rights or remedies without further notice to the buyer:

- (a) To issue court proceedings for damages for breach of contract;
- (b) To rescind the sale of that Lot or any other Lots sold to the buyer whether at that or at any other auction;
- (c) To resell the Lot or cause it to be resold whether by public auction or private sale. In the event that there is a deficiency between the Total Amount Due by the buyer and the amount received by the Auctioneer on such resale after deduction of any necessary expenses the difference shall be paid to the Auctioneer by the buyer. Any surplus arising shall belong to the seller;
- (d) To store (whether at the Auctioneer's premises or elsewhere) and insure the purchased Lot at the expense of the buyer;
- (e) To charge interest on the Total Amount Due at the rate of 2% over and above the base rate from time to time of Bank of Ireland or if there be no such rate, the nearest equivalent thereto as determined by the Auctioneer in its absolute discretion from the date on which payment is due hereunder to the date of actual payment;
- (f) To retain that Lot or any other Lot purchased by the buyer whether at the same or any other auction and release same to the buyer only after payment to the Auctioneer of the Total Amount Due;
- (g) To apply any sums which the Auctioneer received in respect of Lots being sold by the buyer towards settlement of the Total Amount Due.
- (h) To exercise a lien on any property of the buyer in the possession of the Auctioneer or whatever reason.

Liability of Auctioneer and Seller

19. Prior to auction ample opportunity is given for the inspection of the Lots on sale and each buyer by making a bid acknowledges that he has, by exercising and relying on his own judgment, satisfied himself as to the physical condition, age and Catalogue description of each Lot (including but not restricted to whether the Lot is damaged or has been repaired or restored). All Lots are sold with all faults and imperfections and errors of description. None of the seller, the Auctioneer nor any of their employees, servants or agents shall be responsible for any error of description or for the condition or authenticity of any Lot. No warranty whatsoever is given by the seller or Auctioneer or by any of their employees, servants or agents in respect of any Lot and any condition or warranty express, or implied by statute or otherwise is hereby specifically excluded.

Forgeries

20. Any amount paid by a buyer in respect of a Lot which, if it is proved within three (3) years of the date of the auction at which it was purchased, to have been a Forgery shall be refunded to the seller subject to the provisions hereof, provided that:

- (a) The Lot has been returned by the buyer to the Auctioneer within three (3) years of the date of the auction in the same condition in which it was at the time of the auction together with evidence proving that it is a Forgery, the number of the Lot and the date of the auction at which it was purchased;
- (b) The Auctioneer is satisfied that the Lot is a Forgery and that the buyer has and is able to transfer good and marketable title to the Lot free from any third party claims;

FURTHER PROVIDED THAT the buyer shall have no rights hereunder if:

- (i) The description of the Lot in the Catalogue at the time of the auction was in accordance with the then generally accepted opinion of scholars or experts or fairly indicated that there was a conflict of such opinion;
- (ii) The only method of establishing at the time of the auction in question that the Lot was a Forgery would have been by means of scientific processes which were not generally accepted for use until after the date of the auction or which were unreasonably expensive or impractical.

The buyer's sole entitlement under this condition is to a refund of the actual amount paid by him in respect of the Lot. Under no circumstances shall the Auctioneer be liable for any damage, loss (including consequential, indirect or economic loss) or expense suffered or incurred by the buyer by reason of the Lot being a Forgery.

The benefit of this condition shall be solely and exclusively for the buyer and shall not be assignable. The buyer shall for the purpose of this condition be the person to whom the original invoice in respect of the sale of the Lot is made.

Photographs

21. The buyer authorises the Auctioneer at any time to make use of any photographs or illustrations of the Lot purchased by the buyer for such purposes as the Auctioneer may require.

22. New VAT Regulations

22a) All lots are sold within the Auctioneer's VAT margin scheme. Revenue Regulations require that the buyers premium must be invoiced at a rate which is inclusive of VAT. This VAT is not recoverable by any VAT registered buyer.

CONDITIONS WHICH MAINLY CONCERN THE SELLER

Auctioneer's Discretion

23. With regard to the sale of any Lot the Auctioneer shall have the following powers exercisable solely in the discretion of the Auctioneer:
- (i) To decide whether to offer any Lot for sale or not;
 - (ii) To decide whether a particular Lot is suitable for sale by the Auctioneer and, if so, to determine which auction, the place and date of sale, the conditions of sale and the manner in which such sale should be conducted;
 - (iii) To determine the description of any Lot in a Catalogue.
 - (iv) To decide whether the views of any expert shall be obtained and to submit Lots for examination by any such experts.
 - (v) To determine what illustration of a Lot (if any) is to be included in the Catalogue.

Seller's Warranty and Indemnity

24. The seller warrants to the Auctioneer and to the buyer that he is the true owner of the Lot or is legally authorised to sell the Lot on behalf of the true owner and can transfer good and marketable title to the Lot free from any third party claims. As regards Lots not held by the Auctioneer on its premises or under its control the seller warrants and undertakes to the Auctioneer and the buyer that the Lot will be available and in a deliverable state on demand by the Auctioneer or buyer. The seller shall indemnify the Auctioneer and the buyer or any of their respective employees, servants or agents against any loss or damage suffered by any of them in consequence of any breach of the above warranties or undertakings by the seller.

Reserves

25. Subject to the Auctioneer's discretion, the seller shall be entitled prior to the auction to place a reserve on any Lot. All reserves must be agreed in advance by the Auctioneer and entered on the Sale Order Form or subsequently be confirmed in writing to the Auctioneer prior to auction. This also applies to changes in reserves. A reserve may not be placed upon any Lots under €150 in value. The reserve shall be the minimum Hammer Price at which the Lot may be sold by the Auctioneer. A reserve once in place may only be changed with the consent of the Auctioneer. A commission shall be charged on the 'knock-down' bid for Lots which fail to reach the reserve price. Such commission shall be 5% of the 'knock-down' bid. This commission and any VAT payable thereon must be paid before removal of the Lot after the auction. The minimum commission hereunder shall be €50. The Auctioneer may in its sole discretion sell a Lot at a Hammer Price below the reserve thereon but in such case the Proceeds of Sale to which the seller shall be entitled shall be the same as they would have been had the sale been at the reserve. Unless a reserve has been placed on a Lot in accordance with the provisions set out above such Lot shall be put up for sale without reserve. In the event that any reserve price is not reached at auction then for so long as the Lot remains with the Auctioneer and to the extent that the Lot has not been re-entered in another auction pursuant to condition 31 the seller authorises the Auctioneer to sell the Lot by private treaty at not less than the reserve price. The Auctioneer shall ensure that in such a case those conditions herein which concern mainly the buyer shall, with any necessary modification, apply to such sale.

Commission

26. The Seller shall pay the Auctioneer commission at the rate of 10% on the Hammer Price of all Lots sold on behalf of the seller at Irish Art Sales and 17.5% on all other Sales together with VAT thereon at the applicable rate. Minimum charges are detailed below. The seller authorises the Auctioneer to deduct from the Hammer Price paid by the buyer the Auctioneer's Commission under this condition; VAT payable at the applicable rates and any other amounts due by the seller to the Auctioneer in whatever capacity howsoever arising. The seller agrees that the Auctioneer may also receive commission from the buyer pursuant to condition 13.

Minimum Charges: Each individual lot is subject to a minimum fee of €3.00 plus VAT, with a minimum charge per account of €50.00 plus VAT.

Insurance

27. Unless otherwise instructed by the seller, all Lots (with the exception of motor vehicles) deposited with the Auctioneer or put under its control for sale shall automatically be insured by the Auctioneer under the Auctioneer's own fine arts policy for such sum as the Auctioneer shall from time to time in its absolute discretion determine. The seller shall pay the Auctioneer a contribution towards such insurance at the rate of

1.5% of the Hammer Price plus VAT. If the seller instructs the Auctioneer not to insure a Lot then the Lot shall at all times remain at the risk of the seller who undertakes to indemnify the Auctioneer and hold the Auctioneer harmless against any and all claims made or proceedings brought against the Auctioneer of whatever nature and howsoever and whosoever occurring for loss or damage to the Lot. The sum for which a Lot is covered for insurance under this condition shall not constitute and shall not be relied upon by the seller as a representation, warranty or guarantee as to the value of the Lot or that the Lot will, if sold by the Auctioneer, be sold for such amount. Such insurance shall subsist until such time as the Lot is paid for and collected by the buyer or, in the case of Lots sold which are not paid for or collected by the buyer by the due date hereunder for payment or collection such due date or, in the case of Lots which are not sold, on the expiry of seven (7) days from the date on which the Auctioneer has notified the seller to collect the Lots.

Illustration Charges:

27a. Catalogue illustrations are included at the discretion of the Auctioneer. Illustration charges will be calculated on the particular category of sale. These charges are subject to change. Irish art sale illustrations: €150.00 full page, €100.00 half page, €50 all other sizes. Fine art illustrations: Scaled fee €100.00 for lots sold for €3,000.00 hammer price & over, €50.00 for lots sold under €3000.00 hammer price. Contemporary picture illustrations: €25.00 per illustration. All lots illustrated and not sold are charged at €25.00 per illustration.

Rescission of Sale

28. If before the Auctioneer has paid the Proceeds of Sale to the seller the buyer proves to the satisfaction of the Auctioneer that the Lot sold is a Forgery and the requirements of condition 20 are satisfied the Auctioneer shall rescind the sale and refund to the buyer any amount paid to the Auctioneer by the buyer in respect of the Lot.

Payment of Proceeds of Sale

29. The Auctioneer shall remit the Proceeds of Sale to the seller not later than thirty (30) days after the date of the auction, provided however that, if by that date, the Auctioneer has not received the Total Amount Due from the buyer then the Auctioneer shall remit the Proceeds of Sale within seven (7) working days after the date on which the Total Amount Due is received from the buyer. If credit terms have been agreed between the Auctioneer and the buyer the Auctioneer shall remit to the seller the Proceeds of Sale not later than thirty (30) days after the date of the auction unless otherwise agreed by the seller. If before the Total Amount Due is paid by the buyer the Auctioneer pays the seller an amount equal to the Proceeds of Sale then title to the Lot shall pass to the Auctioneer. If the buyer fails to pay the Auctioneer the Total Amount Due within fourteen (14) days after the date of the auction, the Auctioneer shall endeavour to notify the seller and take the seller's instructions on the course of action to be taken and, to the extent that it is in the sole opinion of the Auctioneer feasible, shall endeavour to assist the seller to recover the Total Amount Due from the buyer provided that nothing herein shall oblige the Auctioneer to issue proceedings against the buyer in the Auctioneer's own name. If circumstances do not permit the Auctioneer to take instructions from the seller or, if after notifying the seller, it does not receive instructions within seven (7) days, the Auctioneer reserves the right, and is hereby authorised by the seller at the seller's expense, to agree special terms for payments of the Total Amount Due, to remove, store and insure the Lot sold, to settle claims made by or against the buyer on such terms as the Auctioneer shall in its absolute discretion think fit, to take such steps as are necessary to collect monies due by the buyer to the seller and, if necessary, to rescind the sale and refund money to the buyer.

Payment of Proceeds to Overseas Sellers

30. If the seller resides outside Ireland the Proceeds of Sale shall be paid to such seller in Euro unless it was agreed with the seller prior to the auction that the Proceeds of Sale would be paid in a currency (other than Euro) specified by the seller in which case the Proceeds of Sale shall be paid by the Auctioneer to the seller in such specified currency (provided that that currency is legally available to the Auctioneer in the amount required) calculated at the rate of exchange quoted to the Auctioneer by its bankers on the date of payment. All payment instructions must be in writing.

Charges for Withdrawn Lots

31. Once catalogued. Lots withdrawn from sale before proofing/publication of Catalogue will be subject to commission of 5% of the Auctioneer's latest estimate of the auction price of the Lot withdrawn together with VAT thereon and any expenses incurred by the Auctioneer in relation to the Lot. If Lots are withdrawn after proofing or publication of Catalogue they will be subject to a commission of 10% of the Auctioneer's latest estimate of the auction price of the Lot withdrawn together with VAT thereon and any expenses incurred by the Auctioneer in relation to the Lot. All commission hereunder must be paid for before Lots withdrawn may be removed.

Unsold Lots

32. Where any Lot fails to sell at auction the Auctioneer shall notify the seller accordingly and (in the absence of agreement between the seller and the Auctioneer to the contrary) such Lot may, in the absolute discretion of the Auctioneer, be re-entered in the next suitable auction unless instructions are received from the seller to the contrary, otherwise such Lots must be collected at the seller's expense within the period of thirty (30) days of such notification from the Auctioneer. Upon the expiry of such period the Auctioneer shall have the right to sell such Lots by public auction or private sale and on such terms as the Auctioneer in its sole discretion may think fit. The Auctioneer shall be entitled to deduct from the price received for such Lots any sums owing to the Auctioneer in respect of such Lots including without limitation removal, storage and insurance expenses, any commission and expenses due in respect of the prior auction and commission and expenses in respect of the subsequent auction together with all reasonable expenses before remitting the balance to the seller. If the seller cannot be traced the balance shall be placed in a bank account in the name of the Auctioneer for

the seller. Any deficit arising shall be due from the seller to the Auctioneer. Any Lots returned at the seller's request shall be returned at the seller's risk and expense and will not be insured in transit unless the Auctioneer is so instructed by the seller.

Auctioneer's Right to Photographs and Illustrations

33. The seller authorises the Auctioneer to photograph and illustrate any Lot placed with it for sale and further authorises the Auctioneer to use such photographs and illustrations and any photographs and illustrations provided by the seller at any time in its absolute discretion (whether or not in connection with the auction).

VAT

34. It is presumed unless stated to the contrary, that the items listed herein are auction scheme goods as defined in the Finance Act 1995.

Artist's Resale Rights (Droit de Suite)

35. Government Regulations (S.I. 312/2006), under this legislation a royalty (Droit de Suite) is payable to living artists of E.U. Nationality on all works resold for €3,000 or more, other than sold by the artist or the artist's agent. The resale royalty payable is calculated as follows

From €3,000 to €50,000 4%

From €50,000.01 to €200,000 3%

From €200,000.01 to €350,000 1%

From €350,000.01 to €500,000 0.5%

Exceeding €500,000 0.25%

The total amount of royalty payable on any individual sale shall not exceed €12,500. The seller is liable for payment (paragraph 7.1 of Government Regulations (S.I. 312/2006) of this royalty on completion of the sale. The artist may request from the Auctioneer any information necessary to secure payment. Unless otherwise directed by the vendor, the Auctioneer will automatically deduct the amount due from the proceeds of sale and will hold in trust for the artist or their representative the said sum.

ADAM'S Est 1887



26 ST. STEPHENS GREEN, DUBLIN 2, IRELAND