

# ADAM'S

Est. 1887



SUNDAY 22<sup>ND</sup> MAY 2016 AT 12 NOON

FINE PERIOD INTERIORS AUCTION

## CONTACTS



Brian Coyle FSCSI FRICS  
CHAIRMAN



James O'Halloran BA FSCSI FRICS  
MANAGING DIRECTOR  
j.ohalloran@adams.ie



Stuart Cole MSCSI MRICS  
DIRECTOR  
s.cole@adams.ie



David Britton BBS ACA  
DIRECTOR  
d.britton@adams.ie



Nick Nicholson  
CONSULTANT  
n.nicholson@adams.ie



Kieran O'Boyle BA HDip ASCSI  
ASSOCIATE DIRECTOR  
k.oboyle@adams.ie



Ronan Flanagan  
FINE ART DEPARTMENT  
ronan@adams.ie



Katie McGale BComm Intl MPhil  
FINE ART DEPARTMENT  
katie@adams.ie



Amy McNamara BA  
FINE ART DEPARTMENT  
amymcnamara@adams.ie

## CREATE A 'MY ADAM'S' ACCOUNT

You can now create your own account with us by signing up and registering your particulars online at [www.adams.ie](http://www.adams.ie)

The process involves uploading identification by way of passport or driving license and supplying valid credit card information. This is a once off request for security purposes, and once the account is activated you will not be asked for this information again. You can leave absentee bids online, and add, edit or amend bids accordingly as well as other useful functions including paying your invoice.

# FINE PERIOD INTERIORS

## AUCTION

Sunday 22<sup>nd</sup> May 2016 at 12 noon

## VENUE

Adam's Salerooms, 26 St Stephen's Green, Dublin 2

## SALE CODE

This sale may be referred to as 8144 in all correspondence

## VIEWING

Thursday	19 <sup>th</sup> May	9:30am - 7:00pm
Friday	20 <sup>th</sup> May	9:30am - 5:00pm
Saturday	21 <sup>th</sup> May	11:00am - 5:00pm

## COLLECTIONS

All lots must be paid for and collected before 5:00pm on Tuesday 24<sup>th</sup> May 2016 at the purchaser's risk and expense.

## ENQUIRIES

Telephone: +353-1-6760261  
Email: [info@adams.ie](mailto:info@adams.ie)  
Web: [www.adams.ie](http://www.adams.ie)



# IMPORTANT INFORMATION FOR PURCHASERS

## 1. Estimates and Reserves

These are shown below each lot in this sale. All amounts shown are in Euro. The figures shown are provided merely as a guide to prospective purchasers. They are approximate prices which are expected, are not definitive and are subject to revision. Reserves, if any, will not be any higher than the lower estimate.

## 2. Paddle Bidding

All intending purchasers must register for a paddle number before the auction. Please allow time for registration. Potential purchasers are recommended to register on viewing days.

## 3. Payment, Delivery and Purchaser's Premium

Monday, 23<sup>rd</sup> May 2016, 10.00am - 1.00pm and 2.00pm -5.00pm. Under no circumstances will delivery of purchases be given whilst the auction is in progress. All purchases must be paid for and removed from the premises not later than 5pm on Tuesday, 24<sup>th</sup> May 2016. Auctioneers commission on purchases is charged at the rate of 20% (exclusive of VAT). Terms: Strictly cash, bankers draft or cheque vouched to the satisfaction of the auctioneers, prior to sale. Purchasers wishing to pay by credit card (Visa & Mastercard) may do so, however, it should be noted that such payments will be subject to an administrative fee of 1.85% on the invoice total. American Express is subject to a charge of 3.65% on the invoice total. Please contact our accounts department prior to sale with your payment queries.

## 4. VAT Regulations

All lots are sold within the auctioneers VAT margin scheme. Revenue Regulations require that the buyer's premium must be invoiced at a rate which is inclusive of VAT. This is not recoverable by any VAT registered buyer.

## 5.

Please note that any imperfections are not stated.

## 6. Absentee Bids

We are happy to execute absentee or written bids for bidders who are unable to attend and can arrange for bidding to be conducted by telephone. However, these services are subject to special conditions (see conditions of sale in this catalogue). All arrangements for absentee and telephone bidding must be made before 5pm on the day prior to sale.

## 7.

All lots are being sold under the Conditions of Sale as printed in this catalogue and on display in the salerooms.





1 A MODERN IRISH SILVER SUGAR CASTOR, Dublin 1973, mark of Jewellery and Metal Manufacturing Co., of octagonal panelled baluster form and raised on pedestal foot (c.5.5ozs). 17cm high

€ 60 - 80



3 A VICTORIAN SILVER SIX BAR TOAST RACK, London 1851, mark of John Evans II in oval, having raised foliate scroll handle, reeded bars on cast bracket feet (c.9ozs). 17 x 12 x 15cm high

€ 120 - 180



4 AN IRISH GEORGE III SILVER DIVIDING SPOON, Dublin 1783, mark of Michael Keating, with plain tapering handle, crested (c.4ozs). 30cm long

€ 80 - 120

2 A MODERN IRISH SILVER FOUR PIECE TEA AND COFFEE SERVICE, Dublin 1973, mark of Jewellery and Metal Manufacturing Co., of plain circular tapering form, with ebonised finials and 'C' scroll handles, raised on spreading feet

€ 300 - 500



5

A LATE GEORGE III IRISH SILVER CREAM JUG,  
Dublin 1807, mark of James Scott, of circular baluster form,  
with repousse foliate scrollwork and raised on rim foot  
(c. 6ozs)

€ 80 - 120

6

A GEORGE III IRISH SILVER SUGAR  
BOWL,  
Dublin c.1770, of circular form with wavy  
rim, the body with Wyvern fluting and later  
repousse foliage, raised on three lion mask and  
paw feet (c. 5ozs)

€ 400 - 600



7

A GEORGE III OVAL SILVER TEAPOT,  
London 1794, mark of Henry Chawner, in the  
neo-classical taste, the domed lid with urn  
shaped finial, the lid, rim and body with brightcut  
engraved decoration, having ebonised handle and  
plain spout, vacant cartouches, c.13 ozs

€ 400 - 600





- 8 AN IRISH SILVER CIRCULAR DISH RING,  
Dublin 1934, mark of T.W., in the high Celtic pattern, with pierced repousse,  
chased and engraved bird and serpent motifs, with blue glass liner  
(c. 13.5ozs) 18.5cm diameter

€ 800 - 1,200



- 9 A GEORGE III IRISH SILVER SUGAR BOWL,  
Dublin 1804, mark of Richard Sawyer, of oval boat shaped form, the swing handle and rim with  
gadroon decoration and raised on pedestal foot, crested with blue glass liner (c. 9.5ozs)

€ 500 - 700



10 A VICTORIAN SILVER TEAPOT,  
London 1838, mark of Edward; Edward JR; John & William Bar-  
nard, of compressed circular form with button finial and 'C' scroll  
handle, raised on rim foot, c.23cms

€ 200 - 300

12 AN EDWARDIAN SILVER TEA CADDY,  
Chester 1910, makers mark of Barker Brothers, of  
bombée form, the hinged cover applied with raised  
loop handle and plain tapering body on short pawed  
feet, (c.8ozs). 10cm high

€ 150 - 200



11 A SILVER TWO HANDLE CUP,  
London 1898, mark of Charles Stuart Harris, with gilded interior,  
embossed and engraved with bands of acanthus leaf. 14cm wide  
across handles

€ 100 - 200

13 AN ART NOUVEAU SILVER CASKET,  
c.1910, of rectangular form, the hinged lid with point-  
ed finial, the body supported on shell cast scroll feet,  
struck with import marks .925, (c.12ozs). 15cm wide

€ 150 - 250





14 AN EDWARDIAN IRISH SILVER DISH RING, of large proportions Dublin 1907, maker's mark of Sharman D Neill, of waisted form, the pierced body with a single vacant cartouche, and chased and embossed with swags of fruiting vines surmounted with birds (c.11.5ozs). 19cm diameter

€ 800 - 1,200



15 A MATCHED PAIR OF 19TH CENTURY NEO-CLASSICAL TABLE CANDLESTICKS, of squared tapering form, Sheffield 1897, mark of Martin Hall & Co. Ltd., each with detachable sconce over urn shaped sockets and tapering shaft decorated with rams mask and ribbon tied swags on square foot. 30 cms high

€ 600 - 1,000



- 16 A PAIR OF IRISH GEORGE III SILVER SAUCEBOATS,  
by Matthew West of Dublin, c.1778, each of plain form, applied with leaf capped scroll handle and shelled cabriole legs ending in pad feet, engraved with crest (100ozs). 18cm long

€ 1,500 - 2,000



- 17 A GEORGE II SILVER SALVER,  
by Robert Abercromby, London 1740, of shaped circular form with plain centre and raised pie-crust border, engraved with crest (14ozs). 22cm diameter

€ 400 - 600

- 18 AN IRISH SILVER FOUR PIECE TEA AND COFFEE SERVICE,  
Dublin 1917, mark of T.W., in the Ardagh pattern, comprising a tea pot, coffee pot, cream jug and two handled sugar bowl, with cast and engraved Celtic banding and motifs, raised on spreading pedestal feet (c. 79ozs in all)

€ 800 - 1,200





- 19 A PAIR OF IRISH GEORGE III CORK PROVINCIAL SILVER SAUCEBOATS OF LARGE PROPORTIONS, c.1777, makers mark of Carden Terry, of helmet form, the plain body with punched rim and crest, with acanthus wrapped c-scroll handle, raised on shell capped legs and pad feet (c.19ozs in all). 21cm long

€ 5,000 - 8,000



20 A COMPOSED SET OF TWELVE GEORGIAN SILVER PISTOL HANDLED TABLE KNIVES, English and Irish makers, no date letters, in the 'shell-end' Hanoverian pattern with steel blades; together with a similar set of twelve bread knives, the blades with the mark of Elkington & Co. (24) (c. 75.5ozs)

€ 500 - 700



22 A GEORGE IV IRISH SILVER PLAIN FIDDLE PATTERN DIVIDING SPOON, Dublin 1821, mark of Matthew West and separately 'G.E.' (c. 3.5ozs) 31cm long

€ 200 - 300



21 A GEORGE IV IRISH SILVER PLAIN FIDDLE PATTERN SOUP LADLE, crested, Dublin 1827, mark of Richard Garde of Cork (c. 6.5ozs) 35cm long

€ 200 - 300



23 AN 18TH CENTURY PROVINCIAL SILVER CREAM JUG, Cork c.1780, mark of Carden Terry and Jane Williams, of oval form with all-over brightcut engraved decoration, leaf banding and fluted lower body, raised on rim foot, stamped 'STERLING'. 13.5cm high

€600 - 1000





24 A PAIR OF GEORGE III SILVER CANDLESTICKS, London 1767, maker's mark incomplete, in the Rococo taste, the baluster columns cast with foliate motifs and raised on shaped hexagonal spreading weighted bases. 26cm high

€ 1,000 - 1,500



26 A RARE 18TH CENTURY TWO HANDLE SILVER DRAM CUP, of miniature form, applied with twin scroll handles, and semi-fluted body, struck with maker's mark 'CW' to base (scratch weight 1oz, 3dwt)

€ 1,500 - 2,500

25 A FINE VICTORIAN FOUR PIECE TEA AND COFFEE SERVICE,

Sheffield c. 1850, initialled 'R&S', mark of Roberts and Salter, comprising tea pot, coffee pot, sugar bowl and cream jug, each of concave panelled design tightly engraved with foliate scrolls, gilded interiors (c.71.5oz total). The coffee pot 23.5cm high. (4)

€ 1,200 - 1,800



27 AN EARLY 20TH CENTURY OVAL SILVER BASKET,  
Chester 1915, with pierced lobed panel body.

€ 100 - 200

28 A LARGE EDWARDIAN SILVER SUGAR CASTOR,  
London 1907, of panelled baluster form, engraved with  
crossed golf clubs and initials SGC, possibly Sutton Golf  
Club.  
€ 100 - 150

29 AN IRISH EDWARDIAN THREE PIECE SILVER  
COFFEE SERVICE,  
Dublin 1907, makers mark of West & Sons, of baluster  
form decorated with repousse, chased and engraved  
foliate panels, on lion mask and paw feet, together with  
a matched hot water pot, c.63.5 ozs

€ 700 - 900

30 A COLLECTION OF SEVEN SILVER PHOTO  
FRAMES  
€ 100 - 200





31

A FINE IRISH WILLIAM IV SILVER COFFEE POT,

By James Le Bas, Dublin 1836, of baluster form, the hinged cover with floral finial, applied with acanthus capped scroll handle with ivory heat deductors, the body heavily chased with an eagle above a cartouche to each side, one filled with a crest, against a floral and foliate ground, on waisted circular foot. 29.5 cms high. (c.44ozs)

€ 2,500 - 3,500



33 AN IRISH SILVER TWO-HANDLED TROPHY CUP,  
Dublin 1926, of baluster form, inscribed 'Captains Prize  
1928', Sutton Golf Club. c.14.5 ozs, 24cm wide, 17cm  
high

€ 100 - 200



35 A WILLIAM IV OGEE SHAPED SILVER TEA POT,  
Newcastle 1832, maker's mark 'L&S', of oval form with  
ebonised handle and finial; together with a George III helmet  
shaped cream jug, London 1799. (2)

€ 200 - 400

34 A GEORGIAN STYLE SILVER SALVER,  
London 1913, of circular form with pie crust border  
stamped with retailer's mark of Carrington & Co. Regent  
Street London. 16cm diameter; together with a silver  
christening mug of tapering form, gilded interior and a  
George III sugar castor and a small Edwardian circular  
centre bowl, Chester 1907. 12cm diameter. (4)

€ 300 - 400







36 AN IRISH SILVER DISH RING,  
 Dublin 1907, mark of Edmond Johnson, of waisted circular form, the pierced body decorated with wolves  
 amongst scrolls and foliate designs surrounding a central cartouche inscribed "Presented By ME to ME Lockhard.  
 Bon Soir. York. 1963", with blue glass liner (c.15ozs). 10.5cm high

€ 1,000 - 1,500



37 A HEAVY SILVER TWO HANDLE SERVING TRAY,  
 of rectangular form, by James Wakely & Frank Wheeler of London, c.1900, with pierced wavy gallery set with  
 shells and female masks to each corner, the centre engraved with a broad band of foliage and fruit (approx.  
 193 troy oz). 67.5cm wide

€ 3,000 - 4,000



38 A JAPANESE SILVER TRINKET BOX, c.1920, of rectangular form, with single long drawer, engraved with herons in flight. 10cm wide; together with an eastern white metal centre bowl, shaped as a Monteith, chased and embossed with figures and heart shaped panels. 14cm diameter. (2)

€ 100 - 200



40 A MID 18TH CENTURY SILVER SAUCEBOAT, marks rubbed. 17cm long; together with a later silver sauceboat of Georgian style, Chester. (2)

€ 200 - 300



39 AN EDWARDIAN SILVER CASED DESK WATCH, Birmingham 1907; together with a miniature silver cased desk calendar, a silver backed brush and miniature photograph frame etc.

€ 150 - 200



41 A SILVER THREE PIECE BACHELOR'S TEA SERVICE, Chester 1912, on piece hallmarked only, of domed shape, engraved with ribbon tied bellflower swags

€ 120 - 180



42 A PAIR OF IRISH GEORGE III PROVINCIAL SILVER SAUCE BOATS,  
Cork c.1770, mark of John Nicholson, of helmet form, the plain body with punched rim, with 's'  
scroll acanthus wrapped handle, raised on shell capped legs and pad feet (c.11.5ozs). 18cm long

€ 4,000 - 6,000



43 A SCOTTISH CELTIC REVIVAL PRESENTATION BOWL, Edinburgh, modern, inscribed 'The Glenlivet Hurdle Aintree, 4 April 1986', modelled in the form of a quaiich. 29.8cm wide

€ 400 - 600

45 A SILVER LOZENGE SHAPED CARD TRAY, Sheffield, in neo-classical style, with bright cut border. 19cm wide; together with a miniature silver presentation salver, engraved with inscription 'The Redcar Silver Salver, July 1975'. (2)

€ 300 - 400



44 A GEORGIAN STYLE SILVER SALVER, Sheffield 1932, of piecrust circular form, with plain centre and rope twist border (c.24.5ozs). 30cm diameter

€ 400 - 600

46 A GEORGIAN STYLE SILVER SALVER, Sheffield 1908, of shaped circular form, the plain centre engraved with a crest within shell and scroll border (c.17.5ozs). 27cm diameter

€ 300 - 400





47

A 19TH CENTURY SILVER FIVE PIECE  
TEA AND COFFEE SERVICE,

London 1899, comprising a tea kettle on stand, coffee pot, tea pot, sugar bowl and cream jug, each chased and embossed with fruits, flower heads and foliage enclosing a double c-scroll cartouche on domed circular foot (approx. 130 troy oz in all). The tea kettle 34cm high.

€ 1,500 - 2,500

48

A VICTORIAN SILVER PRESENTATION  
SALVER,

Sheffield 1815, makers mark 'IW' possibly John Winter, of circular form with raised gadroon border enclosing engraved inscription 'Presented to Charles Sandes, India Ville Portarlinton, Esq J.P., Late Captain in the H.M. Scots Fusilier Guards, by the Tenantry of the Queens Co. Kildare & Limerick Estates of the estate of Charles Coote, as a testimonial of their esteem & regard for him together with their high appreciation of his excellent qualities as agent in the management of these extensive properties for upwards of 30 years, Mountrath, August 1854.' (c.30.5 ozs). 33cms diameter

In 1815, Captain Charles Sandes of Indianville, Queen's Co., son of Lancelot Sandes and Sarah Croker married Mary, only sister of Sir Charles Coote, Baronet of Ballyfin, Queen's county.

€ 400 - 600





49 A PAIR OF GEORGE III OLD ENGLISH PATTERN SILVER TABLESPOONS,  
London 1816, makers mark of Josiah & George Piercy.  
(c. 3.5ozs)

€ 60 - 80



51 A GEORGE IV FIDDLE PATTERN SILVER LADLE,  
Dublin 1824, makers mark of Thomas Farnett, with rat-tail bowl and crested handle (c.7ozs). 36cm long

€ 200 - 400



50 A PAIR OF GEORGE III FIDDLE PATTERN SILVER TEASPOONS,  
Dublin 1814, makers mark of Richard Sawyer;  
together with a George III silver sugar nips, Dublin 1810,  
makers mark of Richard Sawyer. (3)

€ 20 - 40



52 TWO GEORGE III SILVER FIDDLE PATTERN TABLESPOONS,  
London 1798 & 1800, marks of Eley & Fern and T.B;  
together with a William IV silver gilt sugar caster, London  
1831, the bowl in the form of a peacock. (3) c.4ozs

€ 60 - 100



53 AN IRISH GEORGE III BRIGHT CUT ENGRAVED SILVER SERVING SPOON, Dublin 1801, makers mark of John Power, the pointed handle with star terminal, crested reserve and trailing bellflowers. 10.5cm long (3.5ozs)



55 A CANON HANDLE RAT TAIL PATTERN SILVER BASTING SPOON, Dublin 1967, makers mark of Royal Irish Silver Ltd, bearing import marks, the hexagonal tapered handle with onyx finial (c.8ozs). 40.3cm long

€ 300 - 500



54 A MATCHED SET OF SIX GEORGIAN SILVER FIDDLE AND RAT-TAIL PATTERN TEASPOONS, Dublin 1828, maker's mark of William Cummins; together with an Old English pattern Georgian silver table spoon, makers mark of Robert Rutland (c. 6ozs in all)

€ 50 - 100



56 A GEORGE III PROVINCIAL IRISH SILVER SCISSORS SUGAR NIPS, Cork c.1777, makers mark of Carden Terry, with scallop tongs. 11.6cm long

€ 200 - 400



57 A SET OF FOUR MODERN IRISH SILVER NAPKIN RINGS,  
Dublin 1973, mark of Royal Irish Limited, with Celtic style banding, in fitted presentation case (c.6ozs)

€ 150 - 200

59 THREE VICTORIAN COMMEMORATIVE SILVER SPOONS,  
Birmingham 1899, two from a series 'Sons of the Empire', all with character handle finials and in fitted cases

€ 30 - 40



58 AN EDWARDIAN SILVER PEDESTAL SAUCE BOAT,  
London 1908, of shaped oval form with panelled body, stylised 'S' scroll handle and raised on spreading foot, c.4ozs

€ 60 - 80



60 A SET OF NINE VICTORIAN SILVER FIDDLE PATTERN TEASPOONS,  
London 1858, crested

€ 50 - 80



61 A COMPOSED SET OF SIX GEORGE III SILVER TAPER HANDLE BRIGHT-CUT TEASPOONS, Dublin c.1813 etc., marks of Matthew West & Richard Whitford etc.

€ 60 - 100



63 A SILVER CADDY SPOON, Sheffield 1862, mark of Walker and Hall, with shell bowl; together with a child's feeding set, Birmingham 1947, comprising a food pusher and a spoon with egg shaped bowl (3)

€ 50 - 100



62 A SET OF SIX EARLY NINETEENTH CENTURY SILVER FIDDLE PATTERN DESSERT FORKS, Dublin 1812, marks for Samuel Neville and W. Hamy, crested

€ 60 - 100



64 A SET OF FIVE BRIGHTCUT SILVER FRUIT FORKS, London 1914, mark of S. D. Neill, in a fitted case; together with a composed three piece knife, fork and spoon set, various marks, in fitted case and a silver bon bon dish, Birmingham 1907, with pierced rim, raised on pedestal foot. (9)

€ 200 - 300





65 AN EDWARDIAN SILVER SUGAR SHAKER, Birmingham 1905, of baluster form, with pierced detachable cover and body decorated with bands of engine turning, struck with import marks. 16cm high

€ 100 - 200



67 A GEORGIAN STYLE SILVER SAUCE BOAT, London 1891, of plain oval form, applied with C-scroll handle on short shell capped cabriole legs. 13.5cm long

€ 120 - 180



66 AN EDWARDIAN SILVER CENTRE BOWL, Sheffield 1906, the pierced out turned rim with gadrooned edge over a pierced trellis work interior, supported on three bird claw feet. 20cm diameter. (c.15ozs)

€ 250 - 400



68 A VICTORIAN THREE PIECE SILVER COFFEE SERVICE, London 1865, maker's mark of William Smiley, retailer's mark of Savory & Sons London, comprising a coffee pot, sugar bowl and cream jug, each of fluted baluster form, engraved with foliate panels. (3) (c.44ozs)

€ 700 - 1,000



69 A PAIR OF GEORGE III IRISH SILVER SAUCE BOATS,  
Dublin c.1769, mark of George Hall, the helmet shaped bodies chased and embossed with flowering vines, swags  
and fluted decoration, each with applied acanthus wrapped 'S' scroll handle and raised on shell capped hoof feet,  
(c. 31ozs all in, one sauce boat being c.16ozs, the other c.15ozs)

€ 4,000 - 6,000



70 AN AMERICAN STERLING STANDARD SILVER CENTRE BOWL, early 20th century, formed as a flower head, with eight out-turned panels on waisted and spreading circular foot. 19cm diameter. (c.8ozs)

€ 150 - 250



72 AN IRISH EBON HANDLED SILVER BRANDY LABEL, by William Egan of Cork, Dublin hallmarks modern; together with a Victorian silver handled magnifying glass. 15cm long. (2)

€ 100 - 150



71 A SMALL IRISH SILVER BON BON DISH, by William Egan of Cork, Dublin 1973, with commemorative Torc mark; together with another embossed bon bon dish and an oval example (adapted from a spoon). (3) (c.6ozs)

€ 100 - 200



74 A MATCHED SUITE OF SILVER KING'S PATTERN CUTLERY, Sheffield 1938 comprising:  
 - 8 large dinner knives  
 - 8 large dinner forks  
 - 8 table spoons (1973)  
 - 8 table forks  
 - 8 table knives  
 - 8 soup spoons (1962)  
 (48). (c. 82ozs)

€ 1,000 - 1,500



- 75 A LARGE SUITE OF AMERICAN STERLING STANDARD SILVER FLATWARE, 19th century, by Gorham, comprising ten tablespoons, twelve table forks, twelve table knives, nine dessert forks, ten teaspoons, twelve coffee spoons and various serving spoons and ladles, seventy-nine pieces in total, each handle cast with baroque decoration (c.120oz in total)

€ 1,000 - 1,500



- 76 A GEORGE I PLAIN PINT SIZED SAUCEPAN, London 1715, possibly Richard Greene, with out-turned rim, with lip, right angled shaft with turned wood handle, engraved with a coat of arms, (c. 20ozs)

*Provenance: Carriglas Manor, Co. Longford*

€ 1,000 - 1,500



77 A SET OF SIX AMERICAN STERLING STANDARD SILVER CUPS AND SAUCERS, each fitted with glass liners, stamped 'Sterling'

€ 100 - 150



79 A CASED SET OF SIX SILVER AND ENAMELLED COFFEE SPOONS, each with individually coloured bowls and bean terminals, Birmingham marks; together with a cased set of bean handled coffee spoons, Birmingham marks and a set of six novelty silver cocktail sticks, in fitted case. (3)

€ 150 - 200



78 A CASED PAIR OF SCOTTISH SILVER BASKETS, Glasgow 1900, of pierced quatrefoil form, each engraved with a crest, retailer mark of 'Sorley Silversmiths, Glasgow'. Each 24cm wide

€ 400 - 600



80 A SET OF SEVEN WILLIAM IV FIDDLE AND THREAD PATTERN DESSERT FORKS, London 1834, the handles engraved with initial 'M'; together with six matching fiddle and thread dessert spoons. (13)

€ 300 - 500





81 AN ASSORTED COLLECTION OF IRISH SILVER FLATWARE, 18th-19th century, including bright-cut, taper and fiddle pattern examples. (24 pieces in all)

€ 300 - 400



83 AN EDWARDIAN SILVER JEWISH SPICE TOWER, Birmingham 1906, the tower surmounted with a flag post above a cone and baluster body with four pendant bells on circular disc foot. 27cm high

€ 300 - 500



82 A MATCHED SET OF SIX VICTORIAN HANOVERIAN PATTERN TABLE FORKS, by George Adams, London, mid 19th century, each engraved with initial to reverse of handle; together with a set of five Irish examples, Dublin 1826

€ 250 - 400



84 AN ART DECO SILVER DESK CLOCK, Birmingham 1953, with rows of engine turned decoration, enclosing an oversized pocket watch inscribed 'Weir and Son' Dublin and Belfast. 11cm high; together with a silver and blue enamel desk watch of circular form. (2)

€ 200 - 300



85 A SMALL CUNARD LINE TRAVELLING CASE, containing an assorted collection of silver ware, including a two handle presentation cup, Art Deco toast racks, a desk candlestick etc.

€ 200 - 300



86 A COLLECTION OF SILVER SCHOOL CHAMPIONSHIP MEDALS, including a number awarded by Terenure College Dublin, (c.7ozs all in). (13)

€ 200 - 300



87 A SILVER HOT WATER JUG, 1905 Birmingham, makers mark rubbed, of oval baluster form, with domed lid, the lower body with lobed reeded decoration, with ebon handle, raised on pedestal foot.

€ 150 - 250



88 A GEORGE III PROVINCIAL SILVER MEAT SKEWER, by John Langlands and John Robertson, Newcastle c.1790, of plain tapering form with circular loop handle (c.3.25oz). 33.5cm

€ 250 - 300



89 AN EDWARDIAN SILVER RECTANGULAR CIGARETTE CASE,  
London 1907, with engine turned decoration, engraved 'Captain's Prize, Sutton Golf Club, 1928'.

€ 100 - 200



91 A SET OF SIX VICTORIAN FIDDLE PATTERN TEASPOONS,  
London 1849, maker's mark of William Robert Smily, with gilded bowls and crested handles (c.3ozs).

€ 50 - 80



90 A MISCELLANEOUS COLLECTION OF SILVER,  
comprising:  
- five novelty teaspoons  
- two fiddle pattern teaspoons  
- two sugar tongs  
- three small sugar nips etc.  
(c.5ozs)

€ 50 - 80



92 A SET OF SIX FIDDLE PATTERN SILVER TEASPOONS,  
Exeter 1831, each engraved with initials 'P.C.'; together with a set of six cased bean handle coffee spoons, Birmingham, and a cased set of six sterling standard cocktail sticks, each with rooster terminals

€ 150 - 200



95 AN EDWARDIAN SILVER SWING HANDLE BASKET,  
Chester c.1980, makers mark of Walker & Hall, Sheffield, of shaped circular form with floral cast arched handle and wavy rim on waisted circular foot (c.30.5 ozs). 27.5cm diameter

€ 400 - 600



96 A SILVER CUSHION SHAPED PATIENCE BOX,  
London 1897, of plain rectangular form, with hinged cover engraved 'Patience, Xmas 1899' enclosing a leather lined interior. 11cm wide; together with a coin inset commemorative dish, the Churchill coin 1965, the dish Birmingham 1974. (2)

€ 150 - 200



97 AN IRISH PROVINCIAL SILVER SAUCE BOAT,  
Cork 1935, mark of William Egan, of helmet form, with applied 's' scroll handle, the body chased and embossed to one side with wolf motif surrounded by foliage and fruiting vines, and to the other with sea serpent amongst leafy motifs, with central cartouche, and fluting and beading to the underside, raised on shell capped hoof feet, (c.3.5ozs). 14.5cm wide over handle and spout

Between July and September 1922, whilst Cork was in the hands of the Anti-Treaty forces, William Egan and Sons found it difficult to send items of silver to Dublin for assay and hallmarking as required by the law. In order that production could continue, the firm's principal had three punches made and applied these during the said period.

Following the resumption of normal conditions, the firm destroyed the punches. However, other 'Cork' marks were used by the firm of Egan, usually in conjunction with, but occasionally instead of, Dublin hallmarks in the 1920s and 1930s, in order to mark their work as different to the standard work of the metropolis.

On this present lot, the Cork town mark has been used in conjunction with both Egan's mark and the Dublin hallmark.

John R. Bowen and Conor O'Brien, 2005. Cork Silver and Gold, Four Centuries of Craftsmanship. The Collins Press, Wilton, Cork. p.16

€ 400 - 600

98 AN EDWARDIAN SILVER TWO HANDLE BASKET,  
Sheffield 1906, of neo-classical form, with folded rim and pierced body, the interior decorated with ribbon tied swags and husks with plain centre well. 27cm across handles. (c.15ozs)

€ 300 - 500



100

100 A COLLECTION OF 19TH AND 20TH CENTURY COSTUME JEWELLERY AND NOVELTY TRINKETS, including pendants, bracelets, cufflinks etc.

€ 150 - 200

101 A MISCELLANEOUS COLLECTION OF COSTUME JEWELLERY

€ 300 - 500

102 A LARGE COLLECTION OF WHITE METAL AND COSTUME JEWELLERY, including bangle, necklaces, rings and assorted items

€ 200 - 300

103 A COLLECTION OF COSTUME JEWELLERY, including a figural brooch by Liberty, lapel pins, gilt and faux diamond bangles etc.

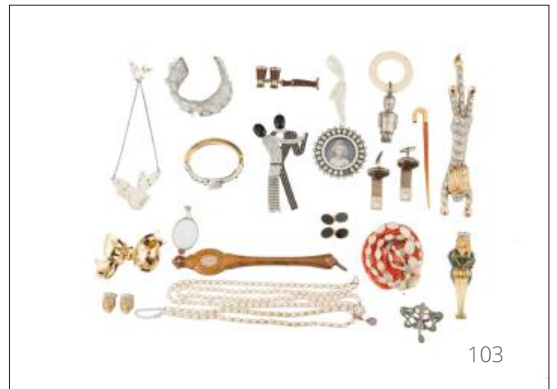
€ 150 - 250

104 A BOX CONTAINING A QUANTITY OF COSTUME JEWELLERY, mainly bangles and bracelets

€ 100 - 150



102



103



104





105

105 TWO BOXES CONTAINING A LARGE COLLECTION OF COSTUME JEWELLERY

€ 150 - 250



106

106 A CHINESE CARVED IVORY BANGLE, c.1900; together with another of slightly smaller dimensions and a bone example. (3)

€ 100 - 200



107

107 A COLLECTION OF GOLD PLATED BANGLES and a quantity of assorted costume jewellery. (5 bags)

€ 150 - 250



108

108 A LARGE COLLECTION OF COSTUME JEWELLERY, coins, buttons, powder compacts etc.

€ 100 - 200



109

109 A 9CT GOLD BROOCH, modelled in the form of a poodle seated. 3cm high; together with a silver and enamelled cheroot holder in fitted case and three jewelled yellow metal bar brooches. (5)

€ 150 - 250



110 A MIXED COLLECTION OF BIJOUTERIE AND COSTUME JEWELLERY, contained within a brown leather case, bearing initials 'TGS'

€ 120 - 180



110

- 115 IRISH SCHOOL, 18TH CENTURY  
 A Rare View of College Green (1784)  
 Sepia, etching and aquatint, 27 x 36cm  
 Literature: Catalogue No.202 in Andrew Bonar Law 'A  
 Contribution Toward the Prints and Maps of Dublin'

€ 200 - 300



- 116 IRISH SCHOOL, 18TH CENTURY  
 A View of Essex Bridge and a General View of Dublin from  
 the Park  
 A pair, etching and aquatint, 27 x 36cm  
 Literature: Catalogue No. 210 & 211 in Andrew Bonar Law  
 'A Contribution Toward the Prints and Maps of Dublin'

€ 300 - 400



- 117 NEWMAN & CO., LONDON  
 Dublin Bay and Kingstown Harbour from Killiney Quarries  
 Lithograph, 27 x 37cm  
 Literature: Andrew Bonar Law 4.345

€ 150 - 200



- 118 HIMLEY AFTER HUGGINS  
 Vue de la Baie et de la Ville de Dublin (Dublin Bay)  
 Aquatint, 37 x 45cm

€ 150 - 250





119 WILLIAM ALLEN (C.1770)  
A Rare Set of Views of Dublin (6)  
Coloured engravings, 17 x 25cm

€ 400 - 600



120 A SET OF NINE ENGRAVED VIEWS OF DUBLIN  
AND ENVIRONS  
from the Dublin Penny Journal, framed as three, 13 x 16cm

€ 200 - 400



121 A VIEW OF THE GREAT EXHIBITION AT  
MERRION SQUARE,  
from the Illustrated London News (imagined), 33 x 48cm

€ 80 - 100





122 IRISH SCHOOL, C.1800  
A View of Dublin from Chapelizod  
Coloured mezzotint, 44 x 56cm

€ 200 - 400



123 M.E., IRISH SCHOOL, 19TH CENTURY  
A Ride up the Phoenix Park, Dublin  
Coloured aquatint  
Published by Pyall & Hunt

€ 50 - 100



124 JOHN HALL AFTER BENJAMIN WEST  
The Battle of the Boyne  
Coloured etching, 49 x 61cm

€ 300 - 400





125 N.M. MORRISON (MID 19TH CENTURY)  
A View of the Provost House, Trinity College, Dublin (1776)  
Lithograph, 50 x 79cm

€ 200 - 400



126 J. COLLYR AFTER FRANCIS WHEATLEY (1747-1801)  
The Volunteers of the City and County of Dublin, as they met on College Green, 4th November 1779  
Coloured engraving, 48 x 63cm

€ 200 - 400



127 P. MAZELL (18TH CENTURY)  
The Perspective View of the Parliament House, Dublin  
Engraving, 40 x 52cm

€ 150 - 250



128 ROBERT HAVELL AFTER J. HAVERTY AND LUSHINGTON RILEY

Entry into the City of Dublin  
Coloured aquatint, 38 x 60cm  
In maple wood frame  
George IV arrived at Howth after an uncomfortable crossing very much the worse for wear from drink. The highlight of his trip was his visit to Slane and its chatelaine, the plump and companionable Marchioness Conyngham. Neither the monarchy nor the government capitalised on the manifest enthusiasm displayed by the populace towards the visit.

€ 400 - 600



129 DANIEL HAVELL AFTER T.L. ROBOTHAM

'A View of Part of the Bay and City of Dublin' and a 'View of the New Pier and the Lighthouse at Howth, Near Dublin'  
A pair, coloured aquatint, 30 x 88cm

€ 1,000 - 1,500





130 IRISH SCHOOL, 18TH CENTURY  
The Barracks and the Royal Hospital (1766)  
Engraving, two in one plate, 16 x 16cm

€ 50 - 80

131 NEWMAN & CO  
"Luggelaw, Co. Wicklow" and "Kylemore Lake, Connemara"  
A pair, coloured lithographs, 26 x 34cm. (2)

€ 200 - 300

132 THE NEW YORK YACHT CLUB REGATTA  
(American 19th Century)  
By Parsons and Atwater , After Buttersworth  
Published by Currier & Ives  
Hand coloured Lithograph, 53 x 79cms  
Framed and bearing old label verso "A Lesage - Print maker, Print Seller, Publisher .... Lower Sackville St Dublin"

€ 2,000 - 3,000



133 EMMANUEL FRÉMIET (1824-1910)  
Arab Rider  
Bronze, 34cm  
Signed

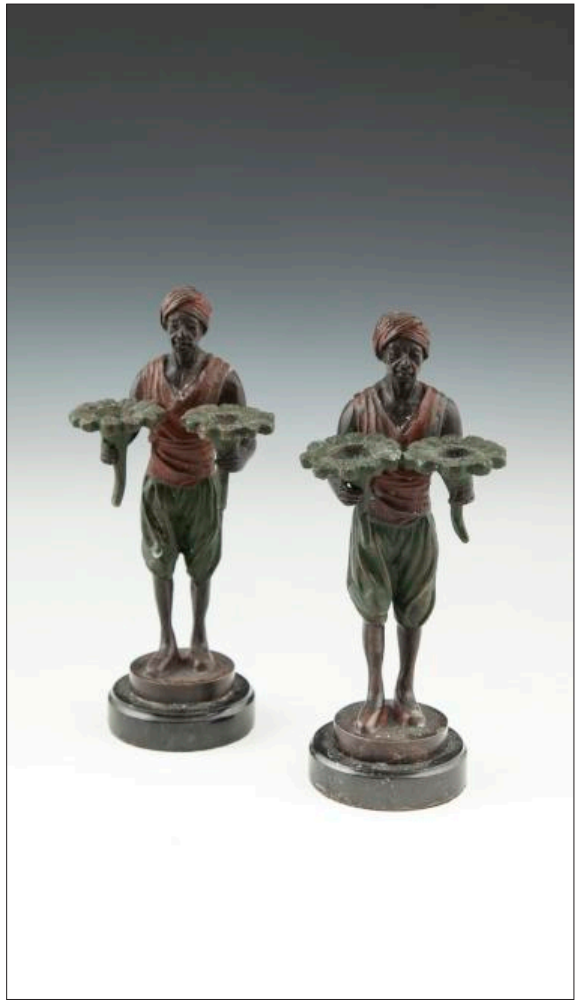
€ 2,000 - 3,000



134 EMMANUEL FRÉMIET (1824-1910)  
Horse study  
Bronze, 26cm  
Signed

€ 1,500 - 2,000





135 DAVID BACKHOUSE (20TH/21ST CENTURY)

A figure of a Standing Female Undressing

Bronze, 32cm tall

Signed and dated '75

€ 400 - 600

136 THREE PARIAN CHINA BUSTS,  
including a bust of Clyte

€ 50 - 100

137 FRANZ BERGMAN (AUSTRIAN, 19TH  
CENTURY)

A pair of cold painted bronzes depicting standing black-  
amoor figures

Signed and dated 'F. Bergman, 1882'. 20cm high

€ 400 - 600





138

A FRENCH BRONZE FIGURE OF A LADY, 19TH CENTURY, standing dressed in a long cloak, holding flowers. 50cm high

€ 500 - 800



139

A 19TH CENTURY CARVED ALABASTER GROUP DEPICTING THE CLASSICAL FIGURE DANAÏDES, standing holding a bowl on a carved column and supported on a circular base, raised on a carved green marble pedestal. 133cm high in total

€ 1,000 - 1,500



140 A SMALL BRASS CARRIAGE CLOCK,  
with white enamel dial marked 'Finnegans Paris'.  
10cm high

€ 50 - 100



142 A BRASS CARRIAGE CLOCK,  
the brass face with enamel chapter ring inscribed 'To  
Maeve and Perry - 1905', with a gilt brass carriage  
clock case. 12cm high

€ 80 - 120



141 A SMALL BRASS CARRIAGE CLOCK,  
with white enamel dial.  
10cm high

€ 50 - 100



143 A FRENCH BRASS FRAMED CARRIAGE  
CLOCK

with white enamel dial

€ 400 - 500





144

A JAEGER LE COULTRE ATMOS MANTLE CLOCK, in fitted case, with clear glass top and side panels, angled corners and squared dial, numbered on the quarter, stamped with serial number 148860. The clock 23.5cm high

€ 1,000 - 1,500



145

A 19TH CENTURY ALABASTER AND GILT SPELTER MANTLE CLOCK, the architectural base surmounted with a drum cased clock with white enamel dial, flanked by twin classical figures. 41cm high x 34cm wide

€200 - 300



146 A VICTORIAN STYLE EBONISED AND GILT THREE PIECE CLOCK GARNITURE, comprising of a mantle clock, surmounted with a classical urn above a circular drum with enamelled panels inked with Roman numerals, applied with leaf cast scrollwork to each side on shaped platform base, 54cm high, accompanied by a pair of seven light candelabra of conforming design. 51cm high (3)

€ 300 - 500

147 A COMPOSITE STONE SQUARE COLUMN, the side panels cast with wreaths with a moulded top and supporting a composite bust of a nymph. 168cm high

€ 300 - 500



148 A PAIR OF CAST IRON GARDEN URNS of circular tapering form each with twin swan neck handles and decorated with foliate swags. 71cm high

€ 400 - 500



149 A PAIR OF CAST IRON CAMPAGNA GARDEN URNS, the rims with tongue and dart decoration and raised on square pedestals. 76cm diameter, height 89cm

€ 1,000 - 1,500

150

A PAIR OF GREEN MARBLEIZED COMPOSITE  
PILLARS OF PLAIN CYLINDRICAL FORM,  
raised on square platform bases. 107cm high, 25cm diameter

€ 300 - 400



151

A WHITE MARBLE FIGURAL WATER FEATURE / BIRD BATH  
with a figure of a partially draped seated young woman above an oval bath  
and raised on a carved square tapering and moulded column, decorated with  
acanthus leaves. 150cm high

€ 800 - 1,200



153 A SHAPED TRIANGULAR CAST BRASS TRIVET,  
and two brass fire implements with urn handles (3)  
€ 200 - 400



155 A BRONZE CIRCULAR SUNDIAL,  
raised on a sandstone base and supported on a carved  
sandstone circular baluster column on platform base.  
c.110cm high overall  
€ 400 - 600



154 A PAIR OF IRON AND BRASS FIRE DOGS,  
and three brass fire implements (5)  
€ 200 - 400

156 A VICTORIAN BRASS FRAMED FENDER,  
decorated with pierced scroll banding raised on cast paw  
feet. 112cm wide  
€ 200 - 300



157 A GEORGE III BRASS BOUND MAHOGANY RECTANGULAR WRITING BOX  
with inset strapwork and edging, the top with vacant cartouche in arabesque form. 46 x 26.5 x 19cm high

€ 250 - 350



159 A COLLECTION OF GEORGIAN AND LATER TEEN,  
including lignum vitae bowl, stand, boxes and ladle. (6)

€ 200 - 300



158 A 19TH CENTURY MAHOGANY FRAMED OCTAGONAL GOUT STOOL,  
the padded top with ratcheting tilt mechanism and raised on paw feet. 43 x 31 cm

€ 250 - 300



160 A SHAGREEN AND BONE MOUNTED TEA CADDY,  
of bombé form, with hinged top enclosing two lidded compartments on spherical feet. 15cm wide; together with a Japanese silvered and papier mache lined box, 19th century, decorated with a bird perched above reeds and flowers. (2)

€ 120 - 180





161 A VICTORIAN KILLARNEY RECTANGULAR WORK BOX, the flat domed lid decorated with a view of the Swiss Cottage within a border of ferns.

€ 200 - 400



163 AN IRISH KILLARNEY WORK BOG OAK TRUNCHEON, mid 19th century, of tapering form, carved with harps and shamrock leaves, pierced for wrist cord. 33cm long; together with another smaller example and a carved bamboo scroll holder. (3)

€ 150 - 250



162 AN IRISH KILLARNEY ARBUTUS AND MARQUETRY INLAID BOX, modelled in the form of a book, with slide top cover. 13cm high; together with another smaller example. 9cm high. (2)

€ 100 - 150



164 A PAIR OF IRISH KILLARNEY WOOD LETTER OPENERS, 19th century, each arbutus panel inlaid with floral sprig inscribed 'Killarney Lakes'. 27cm long

€ 120 - 180



165 ABRAHAM COOPER RA (1787-1868)  
The Deserted Child  
Oil on board, 40 x 32cm  
Signed with monogram

**Provenance:** *Sir Charles Price Collection*

€ 2,500 - 3,500



166

A VICTORIAN KILLARNEY WORK INLAID  
ARBUTUS AND YEW WOOD FOLDING TOP  
GAMES TABLE,

the top centred with an oval panel depicting Muckross Abbey, flanked by fern leaves with geometric patterned banding and outer foliate banding, the interior with checker board and backgammon board and with oval panels depicting a ruin and a cottage and banding with trailing shamrock raised on an octagonal baluster panelled centre pillar and shaped quadruped platform base with paw feet. 79 x 42cm

€ 3,000 - 5,000



167 GEORGE ARMFIELD (C.1808-1893)  
Terriers in an Interior  
Oil on canvas, tondo, 51cm diameter

€ 2,000 - 4,000



168 A 19TH CENTURY CONTINENTAL MAHOGANY SETTEE,  
the shaped back carved with central figural decoration and scrolling foliage, above upholstered panel seat, the  
arms carved with leaf wrapped heads and scrolls, with plain apron, raised on squat scroll feet. 96 x 190cm

€ 700 - 1,000



169 STYLE OF CLASEZ (DUTCH SCHOOL, 17TH CENTURY)

Still Lifes

A pair, oil on panel, 20.8 x 22.3cm

€ 1,000 - 1,500



170 A GERMAN EARLY 19TH CENTURY WALNUT FRAME DAY BED,  
the double scroll ends formed as swan necks raised on scroll feet. 200cm wide

€ 600 - 900





171 TWO 18TH CENTURY CHINESE EXPORT PORCELAIN CENTRE BOWLS, painted with dogs, rams and one wild boar, 14cm diameter, the other enamelled with floral sprays and birds, 15cm diameter; together with a blue and white octagonal dish. 23cm diameter. (3)

€ 150 - 200



173 A LARGE CHINESE BLUE AND WHITE MEAT DISH, 18th century, of oblong form, painted with pagodas in a river and mountain landscape. 46cm wide

€ 300 - 500



172 A LARGE CHINESE BLUE AND WHITE VASE, 18th century, of ovoid form, finely painted with a continuous river and mountain landscape, the shoulder with a row of lappets, the base with a band of rolling waves. 58cm high

€ 300 - 500



174 A CHINESE BLUE AND WHITE PORCELAIN BORDELOO AND COVER, c.1800, with single handle, the cover moulded with a peach, decorated with trellis banding. 26cm long; together with a quatrefoil spoon tray. (2)

**Provenance:** Sotheby's Chatsworth, 5th-7th October 2010

€ 200 - 300



175 A LARGE CHINESE SIX FOLD INLAID EBON SCREEN, each panel decorated with mother of pearl diamond field and set with four carved jadeite reliefs depicting houses, urns, cows, camels etc. Each panel 182 x 40cm

€ 1,000 - 1,500

176 A CHINESE BLACK LACQUER CABINET, with twin panel doors above a twin panel door base decorated in red with figures and garden landscapes

€ 800 - 1,000







177 AN EARLY 20TH CENTURY PAINTED TOLÉ WARE CIRCULAR JARDINIERE, the red ground decorated in the chinoiserie manner, raised on cabriole legs. 42cm diameter x 52cm tall

€ 200 - 300



179 A SMALL CHINESE HARDWOOD OCCASIONAL TABLE, 19th/20th century, with fretwork frieze. 41cm high; together with a group of assorted Chinese stands. (5)

€ 200 - 400



178 A FRENCH 19TH CENTURY PAINTED METAL SIMULATED BAMBOO FRAMED THREE FOLD SCREEN, set with bamboo panels. 170 x 42cm each fold

€ 300 - 400



180 A GEORGE III LACQUERED HANGING CORNER CABINET, decorated with chinoiseries against an ebonised ground. 92cm x 56cm

€ 1,000 - 2,000

181

CHINESE SCHOOL

Songbird and sparrows perched on a flowering plum tree  
Gouache, 129 x 66cm  
Signed

€ 1,500 - 2,500



182

A LARGE IMARI STYLE BALUSTER SHAPED FLOOR VASE,  
with waved rim, decorated in an Imari palette decorated with warriors. 107cm high

€500 - 700



183

AN AESTHETIC MOVEMENT ARMCHAIR, the stained wood frame with rectangular back having panels of spindles and irregular padding, shaped armrests with spindle sides over padded seat and raised on square tapering legs and stretchers.

€ 200 - 300

184

A VICTORIAN INLAID WALNUT DAVENPORT DESK, the slope lift writing surface surmounted with a galleried lift-top compartment and raised above four side drawers and opposing false fascia, fronted by turned and block pillars, raised on bun feet.

€ 300 - 500



185

A FRENCH INLAID EBON AND FLORAL MARQUETRY GAMES TABLE, the folding top baise lined above a decorative frieze and raised on ormolu mounted turned tapering legs with cross stretcher.

€ 300 - 500



187

A 19TH CENTURY BOULLE CENTRE TABLE  
the shaped oval top with ebonised banding and ormolu  
rim above a shaped apron centred with an applied satyr  
mask and raised on cabriole legs with applied mounts.

€ 800 - 1,200



188

A LOUIS QUINZE STYLE KIDNEY SHAPED WALNUT  
GUÉRIDON,  
with brass gallery rail and painted with flowers and scroll work  
within ebonised panels, fitted with three short drawers and  
raised on slender cabriole legs. 58,5 x 30cm

€ 250 - 350

189

A LOUIS QUINZE STYLE KINGWOOD OVAL  
ÉTAGÈRE,  
with cast brass gallery rail and mounts, having three smaller  
frieze drawers and raised on cabriole legs with figural  
mounts. 48 x 35 x 87cm high

€ 300 - 500







190 A VICTORIAN MAHOGANY BOOT RACK, raised on baluster turned and block side supports and splayed legs. 92 x 94cm

€ 100 - 200



192 A 19TH CENTURY MAHOGANY RECTANGULAR DOUBLE DROP LEAF PEMBROKE TABLE, fitted single frieze drawer and raised on square tapering legs. 81 x 48cm closed

€ 150 - 200



191 A PAIR OF GEORGE III MAHOGANY STAINED DINING CHAIRS, in the Chippendale taste, with pierced splat backs and drop in seats, raised on square supports.

€ 120 - 180



193 A 19TH CENTURY WALNUT AND PARCEL GILT WALL MIRROR IN MID-GEORGIAN STYLE, the shaped rectangular plate surmounted with a ho-ho bird and incised gilt scroll work over pierced wavy apron. 102cm high

€ 200 - 300





194 A REGENCY MAHOGANY CIRCULAR TWO TIER DUMB WAITER, with reeded moulding above three rope twist column supports, raised on a fluted pedestal terminating in quatrefoil base on bun feet with castors. 113cm high x 60cm wide

€ 500 - 700



196 TWO VICTORIAN MAHOGANY FRAMED UPHOLSTERED ARMCHAIRS, each with arched padded back covered in crimson damask, on turned legs and castor terminals; together with a further example. (3)

€ 200 - 300



195 A LATE VICTORIAN MAHOGANY FOUR TIER WHATNOT, of rectangular form with serpentine sides and bobbin turned supports. 120cm high, 57cm wide

€ 40 - 60



197 AN EDWARDIAN INLAID MAHOGANY CURIO TABLE, c.1900, of rectangular form with glazed top enclosing a fabric lined interior, single frieze drawer on tapering legs joined by H-stretcher

€ 150 - 200



198 A VICTORIAN WALNUT DAVENPORT DESK, the inlaid top surmounted with low pierced three quarter gallery, with slope front leather scriver, the body with four side drawers and opposing false fascia, raised on bun feet with castors. 89 x 56cm

€ 500 - 800

199 A 19TH CENTURY MAHOGANY MUSIC CANTERBURY, with three fitted open compartments above a single frieze drawer on turned legs and brass casters. 50 x 30 x 47cm high

€ 200 - 300



200 A FRENCH MAHOGANY AND MARQUETRY CYLINDER TOP WRITING DESK, the frieze drawer with opening mechanism for the writing section, with fitted interior and leather scriver having applied brass mounts, raised on cabriole legs. 75cm wide x 56cm deep

€ 400 - 600



201 FRENCH SCHOOL, 19TH CENTURY

Cathedral Interiors

A pair, oil on canvas, 73.5 x 51cm

€ 800 - 1,200

202

A 19TH CENTURY CONTINENTAL  
FRUITWOOD BOMBÉ COMMODE,  
the red veined marble top raised above three long  
drawers with cast brass handles above a shaped  
carved apron on short carved cabriole legs,  
130cm wide

€ 2,000 - 4,000





203 W. LINDBERG  
 Women in interior  
 Oil on canvas, 74 x 60.5cm  
 Signed

€ 2,000 - 4,000

204 AN ITALIAN WALNUT AND MARQUETRY  
 INLAID CASSONE,  
 17th Cent, of rectangular form, the hinged top  
 inlaid with allegorical scene surrounded by scrolling  
 arabesques, repeated to the body and centred with a  
 carved armorial on heavy carved paw feet. 172cm wide

€ 1,200 - 1,800







205 PIETRO FRAGIACOMO (1856-1922)

On the Lagoon, Venice  
Oil on canvas, 47 x 86cm  
Signed

€ 4,000 - 6,000

Pietro Fragiaco was born in the Italian town of Pirano d'Istria near Trieste, but lived most of his life in Venice. He studied for a year in 1877 at the Academy of Fine Arts, Venice.

In 1887, he exhibited at the Esposizione di Venezia. In 1889, he won a bronze medal at the Universal Exhibition of 1889 in Paris and took part in the Munich International Exhibition of the same year, as well as later editions. In 1895, his canvas *Tristezza* (Sadness) won awards in Venice, and again the next year, in Berlin.

He painted mainly seascapes and cityscapes of Venice, often at night. He won the Prince Umberto Prize at the Milan Triennale of 1891 and was a regular participant from 1895 to 1922 at the Venice Biennale, which displayed a solo show of his work in 1910 and a posthumous retrospective in 1924. He died in Venice.





206 EDWARD PRITCHETT  
(BRITISH, 1808-1894)  
The Rialto Bridge, Venice  
Watercolour, 23 x 32cm  
Signed and titled within mount

€ 700 - 1,000



207 DENIS PAGE (ENGLISH, B.1926)  
The Blue Mosque  
Watercolour, 20 x 25cm  
Signed

€ 120 - 180



208 VICTORIAN SCHOOL  
A Child with a Cat  
Watercolour, 44.5 x 35.5cm

€ 300 - 500

- 209 DUTCH SCHOOL,  
17th Cent.  
The Madonna with John the Baptist  
Oil on zinc, 27 x 20.9cm  
€ 500 - 700



- 210 ITALIAN SCHOOL,  
18th Cent.  
Putto  
Oil on canvas, 20 x 25.4cm  
€ 600 - 800

- 211 STYLE OF MURILLO  
Two Urchins Sleeping by a Bridge  
Oil on panel, 22.7 x 18.5cm  
€ 100 - 200





212 A LARGE VICTORIAN CRANBERRY GLASS JUG, with crimped rim and clear glass moulded ribbed handle, the body with faceted design. 24.5cm high; together with a pair of cranberry glass lamps, the knopped stems with clear glass moulded beaded decoration, and mounted on circular brass base, converted for electricity. (3)

€ 150 - 200



214 A SET OF SIX FRENCH CLEAR GLASS POSY VASES, Post War, each moulded in irregular form, marked to underside. 24cm high; together with a set of six Laliqeu liqueur cups, each moulded with a band of fish, marked 'R. Laliqeu' to base. 7cm high (12)

€ 150 - 250



213 A LARGE SILVER MOUNTED CUT GLASS NOVELTY INKWELL, Birmingham 1913, of squared form with angled corners and surmounted by an adjustable calendar, inked on bone panel and supported on an articular arc. 10cm squared

€ 120 - 180



215 A COLLECTION OF 19TH CENTURY AND LATER ENGRAVED GLASS, comprising a rectangular box and cover etched with a depiction of a girl blowing bubbles with a bird and fruit bowl, 11.5cm wide, an engraved tapering glass 'Alice' with reeds, birds and insects and a small collection.

€ 150 - 200



216 A LALIQUE GLASS BOX AND COVER, dated to 1954, of rectangular form with canted corners, the frosted cover decorated with birds in flight, signed R. Lalique, France '54. 10cm wide

€ 100 - 200



218 A FRENCH IRRIDESCENT GLASS BOWL, signed 'Ezan France', of shaped circular form, decorated with flowerheads and leaves in relief. 34cm diameter; together with a French frosted glass bowl, signed 'Carrillo France', decorated to the underside with dragonflies, fruit and reeds. 30cm diameter. (2)

€ 80 - 120



217 A LARGE FRENCH OPALESCENT CENTRE DISH, early 20th century, of shallow circular form, moulded with tulips and leaves to the underside, on waisted circular foot, unmarked. 38cm diameter

€400-600



219 A PAIR OF VICTORIAN RED BOHEMIAN GLASS LUSTRE VASES, with alternating portrait panels. 29cm tall

€ 200 - 300





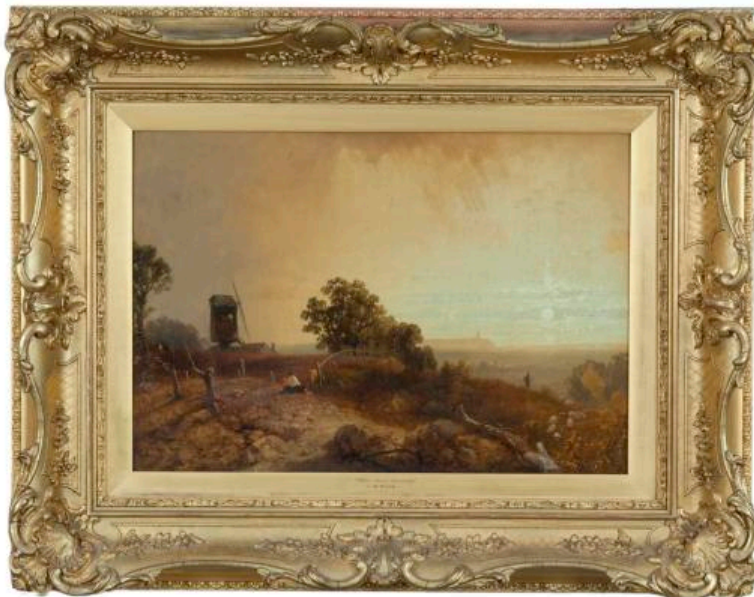
220 A PAIR OF FRENCH MAHOGANY OPEN BASKET FORM SEATS, with scroll sides and applied gilt roundels raised on fluted square tapering legs  
€ 600 - 1,000

221 A SET OF REGENCY STYLE PAINTED TIMBER RAIL BACK CHAIRS, with cane backs and seats raised on ring turned tapering legs  
€ 400 - 600



222 A SET OF THREE 19TH CENTURY FRENCH FRUITWOOD FRAMED SIDE CHAIRS, with oval upholstered backs, the crest rails with ribbon tied carving, the padded seats raised on cabriole legs  
€ 300 - 500





223 JAMES BAKER PYNE (1800-1870)  
Stourhead, Vale of Somerset  
Oil on canvas, 43.5 x 61.5cm  
Signed, inscribed with title verso

€ 1,000 - 1,500

224 A VICTORIAN GILTWOOD PLASTER AND GESSO CONSOLE TABLE,  
the white veined marble top with moulded rim  
on a base decorated with cabochons, scrollwork  
and bellflowers and raised on twin cabriole legs,  
joined with a stretcher centred with a shell.  
112cm wide x 46cm deep x 92cm high

€ 600 - 1,000





225 WILLIAM MELLOR (1851-1931)  
River Landscape with Sheep Grazing  
Oil on canvas, 51 x 77cm  
Signed

€ 700 - 1,000

226 A GEORGE IV MAHOGANY FOLDING  
TOP CARD TABLE,  
c.1825, the rectangular top with rounded fore  
corners and beaded rim on panelled centre  
column and channelled downswept legs, with  
brass castors

€ 800 - 1,200





227 A SET OF ELEVEN VICTORIAN MAHOGANY FRAMED COMPRESSED BALLOON BACK DINING CHAIRS,

with incised line decoration, padded seats and raised on turned baluster tapering panelled legs. (11)

€ 1,500 - 2,000



228 A GEORGE IV INLAID MAHOGANY FOLDING TOP CARD TABLE, of octagonal form, the interior base lined and raised above panelled frieze on square tapering banded legs. 99.3cm wide x 44cm deep

€ 300 - 500

229 A GEORGIAN STYLE WALNUT FRAMED UPHOLSTERED WINGBACK ARMCHAIR with exposed frame and crest rail with shell motif, covered in cream and blue material and raised on short cabriole legs

€ 300 - 500



230 A LARGE UPHOLSTERED SQUARE STOOL the padded seat covered in pink silk damask and raised on turned mahogany legs. 94 x 96 cm

€ 600 - 800







231 GEOFFREY DOUGLAS GILES (1857-1941)  
A Chestnut Mare in a Paddock, a Stately Home Beyond  
Oil on canvas, 51 x 63.5cm  
Signed and dated 1928

€ 1,500 - 2,000

232 A GEORGE III MAHOGANY FOLDING TOP  
CARD TABLE,  
opening to reveal an interior, baise lined and with  
corner candlestands and counter-wells, the frieze  
with small drawer, raised on shell capped cabriole  
legs on pad feet. 87cm wide x 42cm deep

€ 1,000 - 1,500







233

A GEORGE III MAHOGANY AND WALNUT GENTLEMAN'S BUREAU,

the sloped drop front opening to reveal a fitted interior with drawers and pigeon holes, raised above four long graduated cock beaded drawers with brass handles raised on bracket feet. 76.5cm wide x 51cm deep

€ 300 - 400

234

A 19TH CENTURY MAHOGANY RECTANGULAR COMPACT SIDEBOARD,

with raised panel back and sides above a central drawer flanked by twin cupboards with false drawer fascia and brass lion mask and ring handles. 146cm wide x 52cm deep

€ 300 - 400



235

A 19TH CENTURY INLAID MAHOGANY SQUARE CURIO STAND,

the glazed lift top enclosing a plush lined compartment above three drawers on square legs, the back panel stencilled 'Hodges Furnishers Dublin'. 41 x 41 x 81cm high

€ 150 - 250



236 HENRY JOHN YEEND KING RBA  
VPRI ROI (1855-1924)  
A Huntsman and Lady in a Landscape  
Oil on canvas, 86.5 x 66cm  
Signed 'Yeend King'

€ 2,000 - 3,000

237 A REGENCY BRASS INLAID ROSEWOOD  
CARD TABLE,  
of shaped rectangular form, with baise lined interior, on  
four turned pillar supports on platform base and scrolled  
sabre legs with paw feet and castors. 91 x 45cm (closed)

€ 800 - 1,200





237A A MEISSEN SILVER MOUNTED OVAL SNUFF BOX, finely painted with landscapes and a view of Schloss Moritzberg. 8cm; together with two other Continental porcelain boxes (3)

€ 300 - 500

239 A LARGE FRENCH PORCELAIN TUREEN AND COVER, 19th Cent, by J. Ganvain Paris, with leaf moulded handles and gilt highlights, painted with initialled monogram 'B,S' entwined. 30cm wide over handles

€ 150 - 200



238 A MEISSEN STYLE PORCELAIN MIRROR 19th century, the polychrome frame decorated with putti and all-over encrusted foliage.

€ 300 - 400



240 A VICTORIAN TWO HANDED VASE, the turquoise blue ground encrusted with gilt and porcelain foliate and leaf scrolling decoration enclosing two central reserves depicting continental landscape scenes, and raised on circular socle. 37cm high, 27cm over handles

€ 400 - 600



241 A PAIR OF MEISSEN BLANC DE CHINE PORCELAIN FIGURAL CANDELABRA, 19th century, each with four scroll arm branches and raised flower encrusted candle sockets, modelled with romantic figures in 18th century attire seated by a tree, on naturalistic scroll base, factory cross swords mark. 36cm high

€ 600 - 1,000

242 A PAIR OF GERMAN PORCELAIN ROCOCO WALL BRACKETS, c.1900, supported on amorini embellished splayed splats, shell bases, marked to the backs. Each 31cm high

€ 300 - 500



243 A CONTINENTAL PORCELAIN CARTOUCHE SHAPED EASEL DRESSING TABLE MIRROR, the white ground painted with fruit and flowers

€ 600 - 1,000



244 A FRENCH NAPOLEON III GILT BRONZE DESK STAND, by Ferdinand Barbedienne, Paris, c.1870, the quatrefoil stand surmounted with a bust of Napoleon I, the surface decorated in bas relief with figures and animals and other motifs in the Grecian style, fitted with two large bulbous oval inkwells with blue glass liners and another inkwell, the entire raised on scroll bracket legs and paw feet, 49 x 30 x 30cm high; together with a matching paper knife in the form of a Greek sword, 33 cm long. Stamped F. Barbedienne, FONDEUR, the paper knife also signed F. Levillian.

€ 600 - 1,000

245 A VICTORIAN ROSEWOOD AND MOTHER OF PEARL INLAID WORKBOX, of rectangular form, with fitted compartment interior. 12cm high x 30cm wide x 22cm deep

€ 250 - 350



246 TWO IRISH PEWTER HAYSTACK MEASURES, 19th century, by Austin and Son, 94 North Main Street, Cork, in pint and half pint size, with touch marks to rim. 16 cm and 12cm high; together with a pair of pewter tankards, each with applied 'S' scroll handle and clear glass base. 9.5cm high. (4)

€ 100 - 150





247 A LARGE CHINESE ARCHAISTIC BRONZE VASE,  
of rounded form, the neck cast with bands of geometric design and body applied with twin elephant mask handles, above inverted leaf shaped panels on splayed circular foot. 49cm high

€ 400 - 600



248 A LATE 19TH CENTURY PORTABLE TELESCOPE,  
fitted within a brown leather case. 30cm closed, 83cm extended

€ 250 - 350



249 A CAST IRON AND BRASS FIRE GRATE, OF SERPENTINE OUTLINE AND WITH URN FINIALS. 80CM WIDE

€600 - 800



250 A LARGE DUTCH DELFT DISH,  
18th century, of deep circular form, the centre  
painted with still life and surrounded by scattered  
flowers. 34cm diameter

€ 200 - 300

251 A MEDIEVAL STYLE PAINTED METAL  
PAVISE (SHIELD),  
the white ground painted with fleur de lys and a  
rampant griffin. 120cm wide

€ 150 - 250



252 A RUSSIAN SILVERED OVERLAY AND  
CHAMPLEVE ENAMEL ICON,  
20th century, depicting the Madonna and Child, con-  
tained within a scrollwork border. 30 x 24.7cm

€ 150 - 250



253 A PAIR OF COLD PAINTED FIGURAL CANDLESTICKS, c.1900, depicting a Sultan and Sultana, each standing with one raised arm and supporting a candle sconce, on spreading circular base. 37cm high

€ 200 - 400

254 A PAIR OF 19TH CENTURY BRONZE EMPIRE STYLE TALL CANDLESTICKS, with leaf capitals and fluted columns raised on tripod base with hoof feet. 31cm tall

€ 100 - 150



255 A PAIR OF 19TH CENTURY BRONZE EMPIRE STYLE TALL CANDLESTICKS, with leaf capitals and palm columns raised on tripod base with lion monopodia on hoof feet. 32cm tall

€ 100 - 150





256 A FRENCH GILTWOOD AND GESSO THREE LIGHT GIRANDOLE WALL MIRROR, 19th century, of oval form, surmounted with an oval medallion of a Roman soldier over a beaded and foliate moulded frame with three naturalistic branches. 87cm high

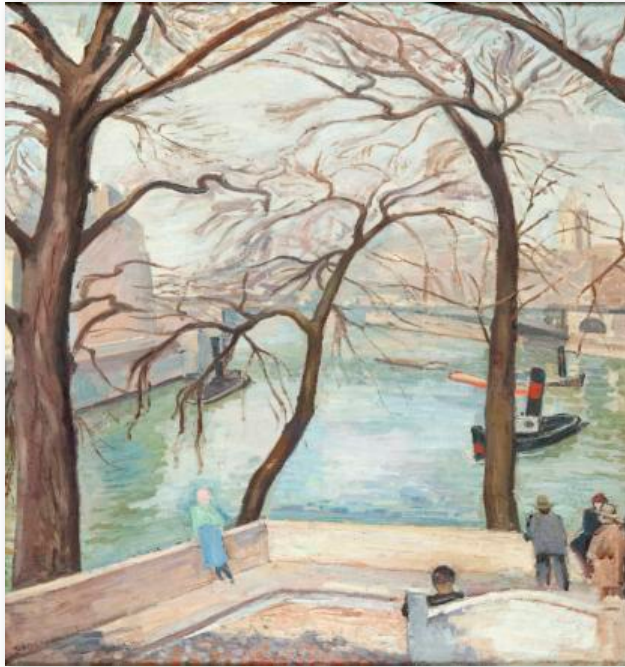
€ 400 - 600

257 A GEORGIAN STYLE MAHOGANY TRIPLE DOOR DISPLAY CABINET, in the Chippendale taste with dentil cornice and blind fret frieze above twin astragal glazed panel doors flanking a glazed sliding panel and raised on a carved base with shell and scroll decoration, with short cabriole legs and claw and ball feet. 139cm wide x 185cm high x 39cm deep

€ 1,000 - 1,500







258 JEAN MARCHAND (FRENCH, 1882-1941)  
La Cite aux Printemps 1936  
Oil on canvas, 93 x 73.5cm  
Signed  
Provenance: With The Crane Kalman Gallery, London (label verso).



259 A PAIR OF EDWARDIAN SATINWOOD, MAHOGANY AND MARQUETRY INLAID PIER TABLES, in the Georgian revival taste, each of bowed shape, with fold top inlaid with paterae and bellflower swags, above an inlaid frieze panel with stylised flutes to each side, on slender tapering legs. 91 cm

€600 – 800





260 A TOLÉ AND BRASS MOUNTED SIX BRANCH CEILING LIGHT, of neo-classical design, the circular basket with raised scroll arm lights suspended from foliate cast chains and conforming corona. Approx. 70cm high (to suspension loop)

€ 400 - 500



261 A KINGWOOD GLAZED DISPLAY CABINET IN FRENCH STYLE,

c.1900, with bowed glazed door above a bombé 'Vernis-Martin' panel decorated with a romantic scene, the sides similar, raised on short cabriole legs, with brass trim and gilt metal rococo mounts. 174cm high x 62cm wide x 33cm deep

€ 800 - 1,400



- 262 A PAIR OF FRENCH ORMOLU AND FROSTED GLASS SIX BRANCH CEILING LIGHTS, 20th century, with leaf cast corona and splayed drapery columns supporting a deep trellis basket with rows of glass flowerheads, applied with cherub figures holding floral swags and floral moulded shades. 68cm diameter x 95cm high

€ 2,500 - 4,000



- 263 A GEORGIAN MAHOGANY COMPOSED WRITING TABLE, the lift top with moulded rim opening to reveal an interior fitted with tooled leather writing surface, pen tray and various compartments, raised on cabriole legs and pad feet. 81 x 50cm

€ 2,000 - 2,500



264

A COMPOSED FRENCH AMBOYNA  
RECTANGULAR SECRETAIRE CABINET,  
surmounted by brass and maple open bookshelves, the  
base with fall front writing drawer having twin false door  
fascia with brass lion mask and ring handles above twin  
fielded panel drawers on twin legs. 89cm wide x 150cm  
high overall

€ 700 - 1,000

265

A FRENCH FRUITWOOD MARQUETRY  
BOWFRONT SIDE CABINET,  
the pink veined marble top above twin frieze drawers  
with applied brass frieze and twin panel door cupboard,  
flanked by reeded pilasters and raised on cabriole legs  
with applied brass mounts. 108cm wide x 49.3cm deep  
x 88cm high

€ 1,200 - 1,800





266 A PAIR OF FRENCH WALNUT MARQUETRY GUERIDONS, OF KIDNEY FORM, with pierced brass gallery rail, the tops decorated with baskets, foliage and birds, above twin concave drawers raised above lower tier, on cabriole legs with brass feet. 58cm wide x 36cm diameter

€ 1,200 - 1,800

267 A FRENCH MARQUETRY COMPACT SECRETAIRE A ABATTANT, the marble top with canted corners above a single drawer, fall front writing section, a further door and a twin panel door lower cupboard, decorated with ribbon motifs and baskets of flowers and with applied brass mounts. 49cm wide x 33cm diameter x 122cm high

€ 800 - 1,200







270

268 THE PROCLAMATION OF THE IRISH REPUBLIC

A printed reduced facsimile of the original Proclamation, closely following the type-style of the original but replacing imperfections in the type, on a sheet of plain greyish paper 36.8 x 25 cms, the sheet recently rebacked.

This appears to be a copy of what has been described as the 'Kansas' version, since there is a copy in the P.S. O'Hegarty Collection in Kansas. It appears to have been printed by lithography. Its origin and date is uncertain, but an extensive analysis on the 'Typefoundry' web-page suggests a date possibly in the 1950s (P.S. O'Hegarty died in 1957). It is very scarce; the paper is thin and fragile.

€ 80 - 120

269 A CHINESE GILT THREAD EMBROIDERED PANEL,

decorated with a dragon in flight with a phoenix to either side, and auspicious emblems, the conch shell, the canopy, the coin, the bat and the fly whisk. 37 x 58cm

€ 100 - 150

270 VICTORIAN SCHOOL

Fruit and Flowers  
Watercolour, semi-tondo, contained in a giltwood and gesso frame

€ 300 - 500



271

DUTCH SCHOOL

Figures by a River and a Bridge  
Oil on canvas, 38 x 48.5cm

€ 400 - 500



272

IRISH SCHOOL

Early 19th Cent  
Fishermen on a Lake  
Oil on canvas, 46 x 62cm  
Signed indistinctly

€ 300 - 400

273

BRITISH SCHOOL,  
19th Cent

River Landscape with Cattle  
Oil on canvas, 49 x 59cm

€ 300 - 500





274

A 19TH CENTURY CARVED AND STAINED OAK FRAME ARMCHAIR, the upholstered padded back, armrests and seat covered in tapestry cloth, the frame decorated with scrollwork and blind fretwork, the armrests terminating in animal masks and raised on 'X' shaped supports

€ 300 - 400

275

AN EDWARDIAN PAINTED SATINWOOD FOLDING TOP CARD TABLE, with painted oval portrait panel and spray of wild grasses within a band of painted garden flowers, the baize covered interior with circular corner candle stands above a frieze fitted single drawer and raised on slender cabriole legs and pad feet. 80.5 x 37cm

€ 600 - 1,000



276

A LOUIS QUINZE STYLE MARQUETRY BUREAU DU DAME, with brass gallery rail and mounts decorated with ebonised panels and with bird, butterfly and foliate sprays, the slope front opening to reveal the fitted interior and raised on cabriole legs. 68cm wide x 44cm deep

€ 600 - 1,000



277 AFTER JAN STEEN  
Dutch Interior with Old Woman and Children  
Oil on canvas, 74 x 60cm  
€ 2,000 - 3,000



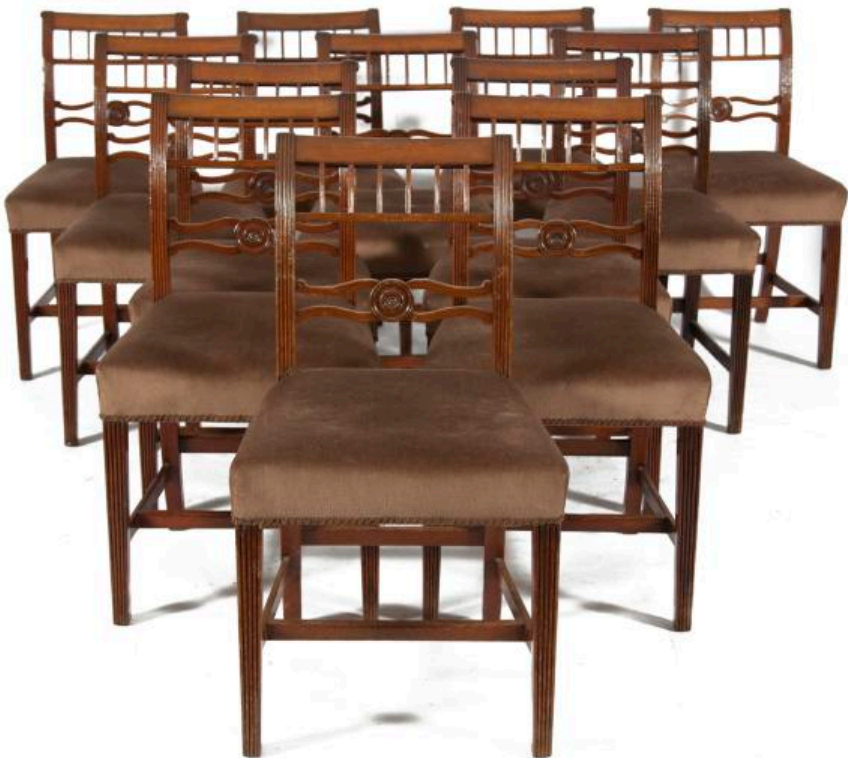
278 A PAIR OF SHERATON INLAID AND PAINTED MAHOGANY HALF MOON TABLES, the tops painted with oval rosettes, foliate scrolls and ribbon tied arrows above similarly decorated frieze raised on square tapering legs and spade feet. 92cm wide x 46cm

€ 1,500 - 2,500



279 A 19TH CENTURY GILTWOOD PLASTER AND GESSO RECTANGULAR OVERMANTLE MIRROR, in the neo-classical taste, the oval plate flanked by reeded columns and having bellflower swags, ribbons and foliate scrollwork. 140cm wide x 81cm high

€ 300 - 500



280 A SET OF TWELVE MAHOGANY AND UPHOLSTERED DINING CHAIRS in George IV style, each with a six-bar top rail above a cross splat centred by a roundel, padded seat and tapering legs

€ 1,000 - 1,500





281 A LARGE VICTORIAN GILTWOOD RECTANGULAR OVERMANTLE MIRROR, with shell and scroll angles, the moulded frame with cast decorative banding and raised on platform base. 95 x 156cm

€ 500 - 800



282 A FRENCH KINGWOOD MARQUETRY VERNIS MARTIN STYLE BOWFRONT TWIN DOOR SIDE CABINET, with marble top above twin panel doors decorated with figures in landscapes, with applied brass mounts, raised on cabriole legs with applied brass paw feet. 106cm wide x 43cm deep x 114cm high

€ 1,200 - 1,500



283 AN ISLAMIC BRASS AND SILVER OVERLAID BOWL,  
19th Cent in Mamluk style, engraved with bands of  
Kufic text  
€ 300 - 400



285 A PAIR OF 19TH CENTURY CHINESE GLAZED  
EARTHENWARE BALUSTER VASES,  
with applied dragons and loose fitting lamps  
€ 600 - 1,000



284 A THUN PORCELAIN BLANC DE CHINE ART  
DECO FIGURE OF A NUDE WOMAN  
with a hand mirror,  
stamped, 41cm high.  
€ 200 - 400



286 A JAPANESE CARVED PAPIER MACHE FIGURE  
OF A SEATED SHINTO PRIEST,  
(Tenjin), late 19th century, with adjustable head. 45cm high  
€ 400 - 600



287

A LARGE JAPANESE BLUE AND WHITE BOTTLE VASE,  
c.1900, the tapering neck painted with a dense foliate ground and body with birds, plum  
trees and stylised flowers. 92cm high

€ 600 - 800



288

A CHINESE POTTERY HAN DYNASTY BURIAL  
FIGURE,  
modelled as a standing warrior, decorated in cream and  
buff tones. 46cm high

**Provenance:** Lam's Gallery, Hong Kong

€ 800 - 1,200



289

A LARGE JAPANESE IMARI PORCELAIN  
CHARGER,  
Meiji period, of shallow circular form, decorated with pan-  
els of foliage in traditional palette. 56cm diameter

€ 500 - 800



290 A PAIR OF POST MEDIEVAL  
'BILLY AND CHARLEY' LEAD CAST  
PANELS,  
19th Cent, London. 11 x 13cm high  
€ 150 - 200



292 A NEST OF BRASS APOTHECARY  
WEIGHTS,  
probably German or Swiss, 18th century;  
together with an 18th century brass-cased  
pocket sundial. 6cm diameter (2)  
€ 60 - 100



291 A COLLECTION OF THREE  
METEORS,  
comprising two intact examples and one  
open, bearing label 'Thunder-Bolt. Rosebank'  
(South Africa)  
€ 200 - 300



293 A WILLIAM OF ORANGE  
COMMEMORATIVE BLUE AND WHITE  
TRANSFER PRINTED DISH,  
probably Staffordshire, 19th century, decorated  
with a depiction of William III on horseback, with  
banner 'The Glorious Immortal Memory', factory  
mark verso. 26cm diameter; together with an Irish  
17th century wax medallion and a commemora-  
tive engraved glass goblet 'The King, God Bless  
Him', with coin inset. 20cm high (3)  
€ 150 - 250





294

A CHINESE IVORY SCENT BOTTLE AND STOPPER,

19th century, carved to one side with figures in relief, the opposing side carved with a fly whisk. 6cm high; together with a Chinese cobalt and copper red scent bottle, 19th century, of cylindrical shape. 8cm high (2)

€ 300 - 400

295

A CHINESE CAST BRASS TWO HANDLE JARDINIÈRE,

of octagonal form, the narrow rim with Greek key border, above shaped panels filled with mythological figures against a hatched ground, on lion mask feet. 35cm diameter, 25cm high

€ 250 - 350



296

A CHINESE EXPORT 'FAMILLE ROSE' PORCELAIN BOWL,

Qianlong (1735-1796), of deep circular form painted and enamelled with stylised flowers, bamboo and prunus. 36cm diameter; together with a Chinese export oblong dish, with canted corners and everted rim, painted to the centre with peacocks and colourful flowers. 37cm wide. (2)

€ 600 - 1,000



297 BRITISH SCHOOL, 19th Century  
A Moonlit River Scene  
Oil on panel, 12.5 x 18cm  
Indistinctly signed lower right  
€ 200 - 300



298 PETER SNELL (B.1935)  
A Wooded River Landscape  
Oil on canvas, 40.5 x 30.5cm  
Signed  
€ 200 - 300



299 AFTER CAMPION AND J H HERRING.  
A SET OF FOUR PRINTS OF THE CHANTILLY RACES, Each 51  
x 71cm  
€200 - 300



300 HUDSON RIVER SCHOOL,  
19th Cent  
Coastal Scene with Fishermen at  
Sunset  
Oil on canvas, 32 x 47cm  
Indistinctly signed lower centre



301 EDGAR LONGSTAFFE (1849-  
1912)  
A Winter Farmyard Scene  
Watercolour, 40.5 x 51cm  
Signed with monogram  
Provenance: With the Richard Hagen  
Gallery, Worcestershire (label on  
reverse)

€ 300 - 500



302 WILLIAM HENRY HUNT (1790-1864)  
'Worn Out' - A Young Girl Seated by a Spinning Wheel in a  
Cottage Interior  
Oil on canvas, 25.5 x 20cm  
Signed

€ 300 - 500



303 AFTER BARTOLOMÉ ESTEBAN MURILLO  
Young Boys Feasting  
Oil on canvas, 79.5 x 63cm

€ 1,500 - 2,000

304 AN UPHOLSTERED MAHOGANY FRAMED TWO SEAT SETTEE,  
the upholstered rectangular panel back and seat raised on a shell and  
foliate scroll carved apron, on short cabriole legs and paw feet. 146 cm  
wide x 70cm deep

€ 1,500 - 2,000







305 DAVID JAMES (1853-1904)  
An Easterly Breeze, Caermarthen Bay, South  
Wales  
Oil on canvas, 45 x 75cm  
Signed

€ 2,000 - 3,000

306 A REGENCY MAHOGANY AND BRASS INLAID  
CHIFFONIER,  
the fluted and glazed top with pierced three quarter brass gallery,  
surmounted on a white marble plinth, with brass inlaid frieze  
drawer, above cupboard doors flanked by twin brass capped  
columns, on a platform base. 133x 108cm

€ 1,000 - 1,500





307 A FRENCH KINGWOOD MARQUETRY SHAPED RECTANGULAR JARDINIERE TABLE, the lift off top revealing a metal lined interior above shaped aprons, applied with all-over ormolu mounts and banding and raised on cabriole legs. 69 x 47cm

€ 800 - 1,200

308 A FRENCH PARQUETRY OVAL BEDSIDE TABLE, the green veined marble top within a pierced gallery raised above a lower single panel door cupboard, the entire decorated with applied ormolu mounts and raised on short turned feet. 80cm high x 50cm wide x 39cm deep



309 A CARVED GILTWOOD AND GESSO CONSOLE TABLE OF COMPACT PROPORTIONS, the white veined marble top with moulded rim above a pierced lattice work and foliate scroll frieze and raised on twin cabriole legs and cross stretcher centred with a rose mounted scroll cartouche. 78cm wide x 38cm deep

€ 600 - 1,000



310 A PAIR OF EDWARDIAN INLAID ROSEWOOD DWARF CORNER CABINETS, with raised gallery sides above an open compartment and twin panel door cupboard decorated with inlaid urn and floral motifs, on a compartment base with gallery rail on turned legs. 65.5cm wide x 117cm high x 38.5cm deep

€ 700 - 1,000

311 A CAST BRASS CURB RAIL FENDER, the stepped base surmounted with reeded rails with eagle claw supports. 138 x 39cm; together with a set of three claw and ball handled fire brasses en suite

€ 500 - 800



312 A SET OF FIVE CONICAL BRASS AND COPPER HAYSTACK MEASURES, ranging from 2 litre to 20 litre, inscribed 'M.C.C.' and each with twin handles. 23cm to 51cm

€ 400 - 600



314



316

- 313 A GEORGIAN STYLE MAHOGANY RECTANGULAR STOOL, the drop in padded seat raised on a shell and rosette carved apron on shell capped cabriole legs and carved triform feet. 64 x 42cm

€ 300 - 500

- 315 A GEORGE IV MAHOGANY RECTANGULAR DOUBLE DROP LEAF SOFA TABLE, with moulded rim above twin frieze drawers and twin dummy drawers and raised on turned reeded tapering legs. 76 x 149cm

€ 400 - 500

- 314 A 19TH CENTURY MAHOGANY MAP CABINET, of shallow rectangular form, the triple panelled fall front having twin brass drop handles, the side fitted with heavy brass carrying handles. 134cm wide x 103cm high x 17cm deep

€ 400 - 600

- 316 A LATE 19TH CENTURY VIENNESE MAHOGANY RECTANGULAR FOLDING TOP OCCASIONAL TABLE, raised on tightly turned splayed tapering legs, with undertier. 63 x 45cm

€ 400 - 500





317

A GEORGIAN STYLE MAHOGANY GENTLEMAN'S BUREAU,

by James Hicks of Pembroke Street, Dublin, the slope fall front opening to reveal a well fitted interior centred with a warrior decorated panel door cupboard flanked by secret compartments, pigeon holes and drawers above a roundel and fluted frieze on a base with fitted twin doors on carved cabriole legs and paw feet. Stamped. 98cm wide x 57cm deep

€ 1,000 - 1,500

318

A GEORGE III MAHOGANY AND SATINWOOD CROSSBANDED CHEST,

the ebon strung top with central oval patera, above four graduating drawers, flanked by twin brass mounted Corinthian columns, raised on tapering square supports. 90 x 91cm

€ 2,000 - 3,000



319

A GEORGE III MAHOGANY CHEST OF FOUR LONG GRADUATED DRAWERS

below a slide with green baize inset, the moulded base on bracket feet. 80cm high x 104cm wide x 59cm deep

€ 500 - 800



320 A PAIR OF BRASS FRAMED FIVE BRANCH 321  
CEILING LIGHTS,  
in the Dutch style, each with scroll arm branches  
and raised sockets, issued from a bulbous and vase  
shaped centre column, with circular suspension  
ring. 58cm diameter

€ 500 - 800

A VICTORIAN ROSEWOOD FRAMED  
SCROLLED DOUBLE CHAIR-BACK SOFA,  
with moulded and leaf carved frame and raised on  
scroll cabriole legs, on castors. 177cm wide

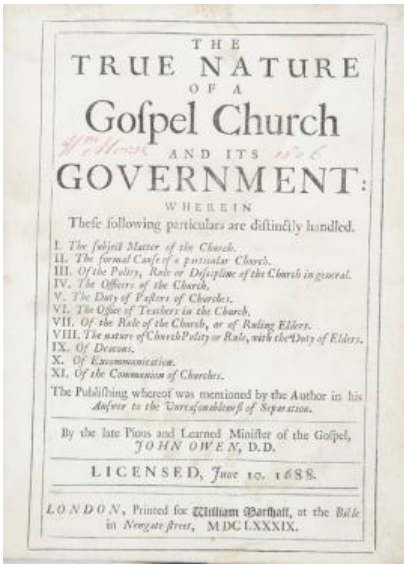
€ 400 - 600





322 AN EDWARDIAN SATINWOOD BUREAU CABINET, of compact form, the domed pediment above astragal glazed doors, the slope front inlaid with trailing vines, above four short drawers, each with conforming decoration and raised on bracket feet. 186 x 67cm

€ 2,000 - 3,000



- 324 OWEN, JOHN  
 The True Nature of a Gospel Church  
 4to, William Marshall, London 1689  
 Contemporary blind stamped calf, spine in compartments, worn, some leaves loose and slight staining  
 € 200 - 300



- 325 SCHRANZ, J. & SABATIER, L.  
 Panorama Du Bosphore  
 Constantinople: J. Missirié & J. Schranz;  
 With brown leather spine over marbled boards; with title page; 8 plates, lithograph views of Constantinople  
 € 700 - 1,000

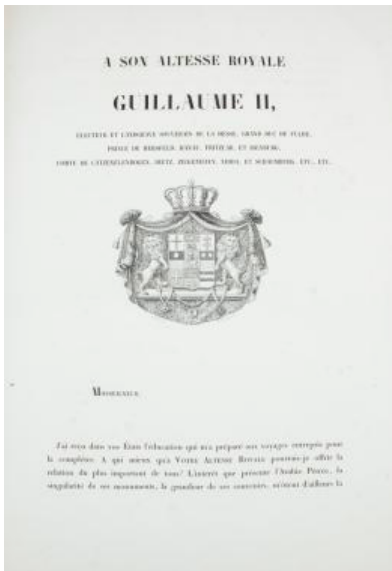


- 323 A RARE MALTS SELECTION OF CASK STRENGTH,  
 25 YEAR GLENESK DISTILLERY WHISKEY,  
 DISTILLED IN 1970. 750ML. BOTTLE NO. 1560  
 € 300 - 500



- 326 GALERIE DU LUXEMBOURG DES MUSÉES  
 La Collection Des Tableaux De L'Ecole Française Depuis David  
 Paris: Augustin Liébert, 1828.  
 Half bound in brown leather over canvas board, centred with gilt title red morocco lozenge; with gilt tooled spine and marbled endsheets.  
 € 150 - 250





- 327 LABORDE, LÉON DE, MARQUIS (1807-1869).  
 Voyage de l'Arabie Pétrée  
 Paris: Giard, 1830. First edition.  
 Half bound in period red morocco over pudding stone marbled boards with gilt title and tramlines to the spine. 60 x 42cm;  
 with illustrated title page, dedication and preface; plate list at rear; plates of views and maps (some large folding maps), mostly lithographs on india paper; one hand-coloured. W.a.f.

€ 10,000 - 15,000



328 A SCAGLIOLI STYLE RECTANGULAR OCCASIONAL TABLE, the dark grey ground decorated with polychrome foliate scroll work, raised on a giltwood and metal table base. 130 x 65 x 50cm high  
€ 400 - 500

329 A LARGE WALNUT AND BRASS FRAMED WALL MIRROR, surmounted with cast brass oval foliate plaque and foliate scrolls, with bevelled plate. 137 x 80cm  
€ 300 - 500



330 A BRASS FRAMED SIX LIGHT ELECTROLIER, in the French 19th century style, with leaf cast corona above a circular boss supported on opposing C-scrolls with scroll arm branches and raised light sockets. 62cm diameter  
€ 300 - 500





331 HENRY SCHAFER (19TH CENTURY)  
Bruges  
Oil on canvas, 46 x 35.5cm  
Signed, also signed and inscribed with title verso  
€ 2,000 - 3,000

332 A FRENCH KINGWOOD MARQUETRY THREE DOOR COMMODE  
with marble top, of bombé form, having applied brass handles and mounts, decorated with foliate sprays and scroll work, raised on splayed legs with brass feet. 90cm wide x 39cm deep x 90cm high

€ 1,000 - 1,200





333

A VICTORIAN MAHOGANY TWO-DOOR BOOKCASE, the moulded cornice above a pair of cross-glazed doors centred with floral motifs and enclosing adjustable shelves, the base with twin pulvinated drawers over cupboard section and pillar supports and plinth base. 114cm wide

€ 400 - 600

334

A MID 19TH CENTURY INLAID MAHOGANY RECTANGULAR KNEEHOLE SIDEBOARD, the plain top raised above a central short drawer, flanked by twin deep drawers with cast brass ring handles and raised on chamfered square supports. 124cm wide x 54cm deep

€ 500 - 800



335

A VICTORIAN TIMBER AND GESSO ROCKING HORSE, of large proportions, the dappled grey painted horse with leather saddle, bridle and stirrups, raised on a varnished pine stand. 160cm long x 134cm high

€ 600 - 800





336 A MAHOGANY LONGCASE CLOCK, mid 19th century, the domed hoop with moulded rim, white enamel dial, roman chapter ring and subsidiary seconds hand, the dial signed Mac Master & Sons, Dublin, the trunk with glazed door on mahogany plinth base. 206cm high

€ 500 - 800



337 A GEORGIAN MAHOGANY SECRETAIRE BOOKCASE, with moulded cornice and plain frieze above a pair of gothic arched glazed doors with brass trim, the outset base with moulded rim and let down secretaire drawer opening to reveal fitted interior of pigeon holes and drawers, with two deep drawers, flanked by two long arched panelled cupboard doors on reeded plinth base. 249cm high x 83cm wide

€ 1,000 - 2,000



338 A SET OF EIGHT IRISH GEORGE III MAHOGANY DINING CHAIRS  
with shaped pierced ladder backs, the padded seats upholstered in studded green hide and raised on square chamfered legs, joined by stretchers, (six single and two elbow chairs)

€ 600 - 1,000



339 AN IRISH GEORGE III MAHOGANY OVAL DOUBLE DROP LEAF DINING TABLE,  
with plain moulded top raised on tapering legs and pad feet. 145 x 151 cm

€ 1,000 - 2,000



340 MANNER OF ALBERT CUYP,  
Dutch 17th Cent  
Cattle and Figures in an Open Landscape  
Oil on canvas, 25.5 x 38cm

€ 1,000 - 1,500

341 A PAIR OF BOULLE VITRINE CABINETS,  
19th Century, with arched cornice and urn finials above single glazed panel  
doors enclosing shelved mirror back interiors above bases with white marble  
tops, fitted panel door cupboards with fielded ovals, decorated with applied gilt  
brass mounts and raised on platform bases.

€ 3,000 - 5,000





342 A PAIR OF CAST METAL FIGURES OF SPHINX ON PLATFORM BASES  
inset with brass bas-relief figural frieze on a base with incised gilt-picked foliate scrollwork. 28cm high, 30.5cm long, 12cm deep

€ 400 - 600



344 A LATE 19TH CENTURY PARIAN CHINA BUST OF CLYTIE, probably Minton, modelled in traditional form on ebonised circular base. 34cm high

€ 200 - 300



343 AN INDIAN BRONZE FIGURE OF GENESH, standing upright wearing traditional Buddhist costume holding various instruments, on an octagonal plinth base

€ 300 - 500



345 A PAIR OF AESTHETIC PERIOD MINTONS POTTERY MOON FLASKS, C.1880S, each of flattened circular form with raised tubular neck and twin handles, painted with songbirds, insects and sprigs against a plain cream ground, impressed factory mark and decorator's mark to base. 34cm high

€500 - 700





346 A PLASTER CAST BUST OF A ROMAN, after the antique, on circular socle base. 65cm high

€ 300 - 500



347 H. DOMAINE (19TH CENTURY)  
Sculpture of a Classical Woman Seated on a Rocky Outcrop  
Bronze, 30cm tall

€ 400 - 600



348 A BELLEEK FIRST PERIOD BUST OF THE QUEEN OF HOPS (1863-1890), modelled turned slightly to the right wearing a trail of ivy leaves, on waisted circular socle, factory marked to base. 28cm high

€ 400 - 600



349

A WILLIAM IV ROSEWOOD OAK OPEN ARMCHAIR IN JACOBEAN STYLE, the padded back embroidered with knight in armour in a gothic niche in colours on a blue ground, the seat with a trophy on turned legs

Provenance : Adare Manor- Lot 341 Christie's /Hamilton and Hamilton, June 1982

€ 500 - 700



350

A SMALL MAHOGANY SILVER TABLE in the manner of James Hicks of Dublin, with cavetto top and raised above shaped apron centred with a shell on slender cabriole legs.

€ 200 - 400



351

A MAHOGANY LONG RECTANGULAR READING STAND, raised on twin turned end supports and splayed legs. 94cm wide

€ 50 - 100



352

A FRENCH LATE 19TH  
CENTRUY WALNUT FRAME  
SWIVEL CHAIR,  
with curved shield shaped padded back  
and seat on a circular revolving base  
with square tapering legs and stretcher

€ 200 - 400

353

A PAIR OF LATE 19TH CENTURY FRENCH  
PAINTED TIMBER SIDE CHAIRS,  
the reeded rectangular frames with padded backs  
and seats raised on turned fluted tapering legs

€ 200 - 400



354

A 19TH CENTURY MAHOGANY FRAMED TWO FOLD FIRE SCREEN,  
painted with medallions depicting putti within gilded garlands. Each panel 46 x 46cm

€ 300 - 500



355 A GEORGE III MAHOGANY SHAPED CIRCULAR  
SNAPTOP TEA TABLE,  
with scalloped rim on open birdcage and turned centre pillar  
and outswept tripod legs. 87cm diameter

€ 300 - 500

356 A SET OF EIGHT VICTORIAN MAHOGANY  
FRAMED DINING CHAIRS,  
each with padded hoop back, covered in striped upholstery,  
and raised on cabriole legs. (8)

€1000 – 2000







357

A GEORGE III MAHOGANY CIRCULAR SNAPTOP TEA TABLE, with moulded rim raised on open birdcage and baluster turned centre pillar with leaf carved outswept tripod legs. 68cm diameter

€ 500 - 800



358

A GEORGE III MAHOGANY CIRCULAR SNAPTOP TEA TABLE, with moulded rim raised on open birdcage and baluster turned centre pillar with plain outswept tripod legs. 78cm diameter

€ 300 - 500

359

AN EARLY VICTORIAN MAHOGANY EXTENDING DINING TABLE,  
the thumb moulded rim with canted corners, above plain apron, and raised on four turned tapering legs on brass  
castors. 252cm long x 161cm wide (when fully extended and including two leaves)

€1000 – 2000



360

A JAPANNED CIRCULAR TILT TOP TEA TABLE,  
the green ground decorated with garden landscapes,  
raised on turned centre pillar and tripod base. 80cm  
diameter

€ 200 - 400





361 W. WARD (ENGRAVER) AFTER W.R. BIGG  
 'The Romps' and 'The Truants'  
 A pair, coloured engravings, 49 x 62.5cm  
 Contained in giltwood frames

€400 - 600

362 A GEORGE III MAHOGANY CIRCULAR TILT  
 TOP TEA TABLE,  
 on baluster turned centre pillar and outswept tripod  
 base. 92cm wide

€ 200 - 400





363

A VICTORIAN EBON FRAME  
SQUARE STOOL,  
with upholstered seat raised on scroll  
and block supports with X-frame  
stretcher picked in gilt, raised on castors.  
50 x 50cm

€ 200 - 300



365

AN EDWARDIAN PAINTED  
CIRCULAR REVOLVING  
OCCASIONAL STAND,  
with brass gallery above open  
compartments, decorated with  
painted floral sprays on tripod base.  
42cm wide

€ 300 - 500

364

A GEORGE IV STYLE PAINTED AND  
PARCEL GILT 'X' FRAME STOOL  
with upholstered seat. 46cm wide

€ 100 - 150



366

A PAIR OF CHINESE INLAID PADOUK SENARE OCCASIONAL TABLES,  
the tops inset with marble, the rims and pierced  
sides decorated with mother of pearl foliate  
motifs, fitted undertiers and raised on square  
supports. 41 x 41 x 79cm high (2)

€ 400 - 500



367

A 19TH CENTURY MAHOGAN Y RECTANGULAR  
CELLARETTE,  
the lift top opening to reveal a fitted interior with two zinc lined  
compartments, and raised on cabriole legs and pad feet. 55 x 35  
x 69cm high

€ 200 - 300

368

A LATE 19TH CENTURY  
STAINED AND CARVED OAK  
MONK'S BENCH,  
the arch raised back with foliate scroll-  
work above a lift top seat, scroll arms  
and raised on baluster turned legs and  
stretchers. 155cm wide x 135cm high

€ 400 - 600





369

AN EDWARDIAN INLAID MAHOGANY CORNER DISPLAY CABINET,  
the cornice centred with an urn above twin astragal glazed panel doors with satinwood banding and boxwood  
stringing on a base fitted with twin fielded panel doors and raised on square tapering legs. 229cm high x 87cm  
wide

€ 800 -1000



371 A LARGE 19TH CENTURY MAHOGANY FRAMED CHEVAL MIRROR, the arched rectangular plate surmounted with floral cresting, within crutch framed uprights on downswept scroll feet. 102cm wide

€ 300 - 500

372 A 19TH CENTURY MAHOGANY COMPOSED BOOKCASE CABINET, with Greek key cornice above twin astragal glazed panel doors on a cupboard base, fitted with twin drawers and twin fielded panel doors, raised on bracket feet. 137cm wide x 234cm high x 45cm deep

€ 1,000 - 1,500



373

A PAIR OF LATE 19TH CENTURY FRUITWOOD SINGLE CHAIRS, in the Dutch taste, each with carved backs, cane splats and seats, raised on cabriole legs on paw feet.

€ 300 - 500

374

A BLACK PAINTED FRAMED RECTANGULAR WALL MIRROR, with surmounted applied foliate scroll work, the frame with painted floral and scroll work and having a bevelled plate. 94 x 58cm

€ 200 - 300



375

A GEORGE III MAHOGANY FRAMED PIERCED LADDER BACK ELBOW CHAIR with outswept armrests, padded seat and raised on chamfered square supports.

€ 120 - 160







376 A FRENCH KINGWOOD MARQUETRY OPEN BOOKCASE, with marble top above bombé shaped body with applied brass mounts and raised on short cabriole legs with brass scroll feet. 86cm wide x 28cm diameter x 93cm high

€ 300 - 400



377 A PAIR OF MODERN UPHOLSTERED TWO SEATER SOFAS, with loose cushions covered in navy blue damask material. 150cm wide x 92cm deep x 77cm high

€ 500 - 700



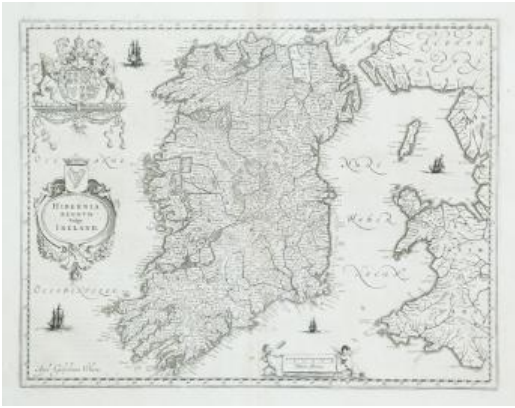
378 A LARGE CAST BRASS CURB FENDER with pierced decoration and raised on platform base. 169.5 x 32cm

€ 150 - 250

386 CHÂTEAU LATOUR 1997  
Pauillac, Bordeaux, France  
1 btl., 75cl.; together with  
Château Rayas Châteauneuf-du-Pape 2001  
Pignan, Vancluse, France  
1 btl., 75cl.;  
Môet & Chandon Dom Pérignon Cuvée 1990  
Champagne, France  
1 btl., 75cl.;  
Môet & Chandon Dom Pérignon 2000  
Champagne, France  
1 btl., 75cl.; and  
Château Léoville Las Cases, Grand Vin de Léoville du Marquis de Las Cases 2001  
Saint-Julien, France  
1 btl., 75cl. (5)

€ 600 - 800





379 JOAN BLAEU (1596-1673)  
 A Set of Six Maps  
 Ireland, the Four Provinces and Caterlogh. From the Latin edition of 1662, the maps having the extra ships. Latin text on verso. Abl 56.  
 Provenance: The Richard S.J. Clarke Collection  
 € 700 – 1,000



381 JOHANNES JANSSEN (1588-1664)  
 A Set of Five Maps, Ireland, Munster, Leinster, Connaught, Ulster, from Vol I of the German edition of his Atlas Novus, 1636. Abl ME44. (5)  
 Provenance: The Richard S.J. Clarke Collection  
 € 1,000 – 1,500



380 JOHANNES JANSSEN (1588-1664)  
 A Set of Five Maps, Ireland, Munster, Leinster, Connaught, Ulster.  
 From Vol VI of the Latin edition of his Atlas Mayor.  
 Abl ME154. (5)  
 Provenance: The Richard S.J. Clarke Collection  
 € 1,000 – 1,500



382 MERCATOR / HONDIUS  
 A Set of Five Maps, Ireland, The Northern Part, the Southern Part, Ultonia and Udrone.  
 From the 1630 Latin edition of the Atlas sive Cosmographicae.  
 Black and white. Abl 142. (1-5). c470 x 340  
 Provenance: The Richard S.J. Clarke Collection  
 € 800 – 1,200



383 A PLASTER MODEL OF CONNOLLY'S FOLLY

BY TIMOTHY RICHARDS OF BATH, raised on an ebonised base. 29.3cm high x 26 x 9.5cm

Connolly's Folly is an obelisk structure built within Castletown Estate by Catherine Connolly, widow of speaker William Connolly, to provide employment when the famine of 1740/41 was at its worst. It was designed by architect Richard Castle.

€150 – 250



385 A PAIR OF CELADON PORCELAIN TABLE LAMPS,

of circular baluster form with applied brass mounts, and raised on circular platform base. 39cm high

€300 – 400



384 A PAIR OF LATE 19TH CENTURY BRASS CANDLESTICK TABLE LAMPS,

in the Gothic taste with shades, adapted for electricity. 27cm high  
Provenance: Polly Devlin Sale, Adam's

€100 – 200



360A A 19TH CENTURY TOLEWARE TEA CANISTER TABLE LAMP,

the green ground decorated with a panel depicting a 'Chinaman' in landscape, adapted for electricity. 34cm high (canister and lid)

€150 -250



387 A LALIQUE TWO HANDED CUT AND CLEAR GLASS LOVING CUP, pre-war mark, with leaf-cut lunette handles, marked to under-side. 14.5cm high

€ 600 - 900



389 A 19TH CENTURY COPPER TWO HANDED TEA URN, of classical form, the detachable cover with globular finial and body with out-turned floral cast rim, with turned ebon side handles, and raised on concave platform base over cast anthemion feet

€ 200 - 350



388 A DOULTON LAMBETH TAPERING VASE, converted to table lamp, decorated with lacework in gilt, salmon and turquoise enamel, and raised on deep blue pedestal foot with brown border. 41cm high

€ 300 - 500



390 A RARE BELLEEK LEMON SQUEEZER, first period (1863-1891). 10cm diameter; together with a rare Clyhore four-strand basket, 'Clyhore, Co. Donegal', of heart shaped design modelled with leafy rim and trellis work body, banner mark verso. 12cm long (2)

€ 150 - 250



- 391 AN ART NOUVEAU STYLE INLAID MAHOGANY BANJO BAROMETER, the case decorated with boxwood and mother of pearl stylised foliage. 87cm high

€ 100 - 150



- 392 A 19TH CENTURY ALCHEMIST'S BRASS SCALES, by W.A. Webb Ltd., Ilford, raised on a rectangular mahogany stained box base with single drawer, retailed by LWR Ormond Quay Dublin Weighing Machine Specialist

€ 60 - 100



- 393 A GEORGE IV INLAID MAHOGANY BANJO BAROMETER, with a steel face. 94cm tall

€ 300 - 400



- 394 A BRASS CORINTHIAN COLUMN OIL LAMP, with cut clear glass reservoir, lacking shade

€ 120 - 180



395 A WEDGWOOD BLUE JASPERWARE JUG WITH SILVER HINGED LID, hallmarked Birmingham 1853, mark of George Unite, the body with neo-classical figural decoration

€ 100 - 150



397 AN 18TH CENTURY POPPLESDORF STYLE FAIENCE LOBED CIRCULAR DISH, the reserve painted with two exotic birds in a landscape with a tree, within a pale blue and gilt scroll border

€ 200 - 300



396 A CAST IRON POLYCHROME FIGURAL 'TRANSVAAL MONEY BOX'; and a 19th century timber handled iron gopherring tongs (for curling hair). (2)

€ 40 - 60



398 A JAPANESE KUTANI WARE CIRCULAR BOWL, 19th century, decorated in the traditional palette with figures in an interior, picked out in burnt orange and gilt against a white ground. 18cm diameter; together with a 19th century Queen Victoria Jubilee dish (1887), transfer printed with portrait medallion and title, within a wreath of oak leaves. 22cm diameter. (2)

€ 80 - 120



399 A ROSEWOOD CASED BANJO BAROMETER, incorporating a thermometer and clock dial  
€ 250 - 350



401 A FRENCH CAST BRASS MANTLE CLOCK, 20th century, surmounted by an urn over a gilt metal and enamel dial with Roman numerals, decorated with scrolling foliage and rockwork to each side, on splayed scroll supports. 57cm high  
€ 200 - 300



400 A PAIR OF CONTINENTAL PINK GROUND PORCELAIN VASES, c.1880, of flattened baluster form, each painted with roses and ferns within gilt borders, applied with twin interlaced side handles. 31cm high  
€ 100 - 200



402 A PAIR OF BRASS AND RED ALABASTER COLUMN TABLE LAMPS, the baluster column of ovoid form supported on raised acanthus leaves and fluted circular base. 68cm high  
€ 400 - 600



403 A VICTORIAN ROCKINGHAM STYLE CHINA PART TEA SERVICE, painted with groups of summer flowers within gilt borders against a turquoise ground

€ 80 - 120



405 AN OVAL GILT METAL AND PIETRA DURA MOUNTED OVAL CASKET, the hinged cover inset with a floral inlaid panel, enclosing a velvet lined interior with twin side handles and enamel strapwork mounts, on spreading base. 25cm wide

€ 300 - 500



404 A PAIR OF 19TH CENTURY FLORAL PAINTED PORCELAIN VASES, of baluster form, each with flared serrated rim and bulbous bodies painted with a continuous floral study on pierced support and circular foot. 41cm high

€ 300 - 400



406 A PAIR OF VICTORIAN GILT FRAMED GROS-POINT TAPESTRY PANELS, each woven with depictions of figures in a woodland. 77 x 66cm

€ 300 - 500





407 A 19TH CENTURY INLAID MAHOGANY BANJO BAROMETER

€ 250 - 350



409 A PAIR OF VICTORIAN GILTWOOD AND GESSO WALL BRACKETS, of bowed form, the shaped platform top decorated with a trail of oak leaves and acorns above figures of centurions on horseback, tapering to a wheat sheaf and flowerhead terminal. 42cm high

€ 200 - 300



408 AN EDWARDIAN BRASS AND HORN MOUNTED DINNER GONG, c.1900, formed as a pair of inverted cattle horns supporting a circular brass drum, with beater on an oval oak plinth base. 54cm wide

€ 100 - 150



410 A PAIR OF VICTORIAN GILTWOOD AND GESSO FIGURAL WALL BRACKETS, c.1870, each modelled in the form of winged cherubs holding aloft a trefoil platform. 32cm high

€ 250 - 350



411 AN EDWARDIAN UPRIGHT INLAID MAHOGANY DISPLAY CABINET, of square form, the top with shaped moulded rim above a tall glazed panel compartment and raised on square tapering legs. 44 x 44 x 94cm high

€ 150 - 250



412 A BENARES BRASS CIRCULAR TRAY TOP TABLE, on folding timber base. 57cm diameter x 50cm high

€ 100 - 150



413 A BLACK STAINED PANELLED BACK OPEN ARMCHAIR, 17th Cent., of large proportions with scrolled arms.

€ 400 - 600



414 A LOUIS XVI VERNIS MARTIN STYLE DISPLAY CABINET, with glazed door and fitted interior, decorated with gilt metal mounts throughout, and figural landscape painted panels with brass rococo mounts, raised on short cabriole legs. 165cm x 88cm

€ 600 - 800



415 A MAHOGANY AND SATINWOOD CROSS BANDED AND EBON STRUNG CORNER CABINET, 19th century, with broken swan neck pediment with inlaid flower heads and oval patera to the centre with inlaid dentil cornice, the frieze interspersed with oval shell paterae and geometric designs above a pair of astragal glazed doors, canted sides and bracket feet. 243cm high x 108cm wide

€ 800 - 1,200



416 AN EARLY VICTORIAN MAHOGANY CHIFFONIER SIDE CABINET, with raised panel back and shelf above twin panel doors flanked by turned engaged columns and raised on lobed bun feet. 129cm wide, 157.5cm high

€ 250 - 350

417 A GEORGE III MAHOGANY HANGING CORNER CUPBOARD, the plain cornice above a single fielded panel door decorated with cross-banding, applied with brass lock plate, the base with single frieze drawer, flanked by twin dummy drawers on a reeded plinth. 118cm high x 75cm wide

€ 600 - 800



418 A LATE 19TH CENTURY MAHOGANY SHAPED RECTANGULAR SIDE BOARD, with raised panel back and sides above three frieze and three panel door cupboards with lion mask and ring handles, with reeded pilasters on turned tapering legs. 152 x 53cm

€ 400 - 500



419 A 19TH CENTURY INLAID MAHOGANY RECTANGULAR BOWFRONT SIDEBORD, the raised back and shaped sides above four frieze drawers with brass tire and twin panel door cupboards decorated with stringing, quarter paterae and satinwood and holly oval shell motifs, raised on square tapering banded legs. 210cm wide x 70cm deep

€ 400 - 600





420 A MAHOGANY AND ROSEWOOD CROSSBANDED RECTANGULAR TILT TOP BREAKFAST TABLE, 19th Cent, supported on a panelled column and concave platform base with scroll feet. 155 x 117cm

€ 400 - 600



421 A GEORGE IV INLAID MAHOGANY RECTANGULAR FOLDING TOP TEA TABLE, the top with rosewood cross banding raised on turned reeded baluster centre pillar, on leaf capped quad-ruped supports with brass toe caps and casters. 91.5 x 46cm (closed)

€ 800 - 1,200



422 A TIBETAN THANGKA PAINTING, 20th Cent, painted with a seated Buddha, surrounded by figures and deities in a garden setting. 67 x 48.5cm

€ 200 - 400



424 A PAIR OF JAPANESE BLUE AND WHITE CHARGERS, 20th century, each of circular form with wavy rim, decorated with birds amongst chrysanthemums and foliage, pseudo seal mark verso. 41cm diameter

€ 120 - 180



423 TWO JAPANESE MEIJI PERIOD BRONZE VASES

€ 400 - 600



425 A CHINESE BLUE AND WHITE CIRCULAR PORCELAIN BOWL, late Ming dynasty, decorated with stylised dragons amongst clouds over a row of lappets, repeated to the interior. 20cm diameter; together with a small collection of blue and white ceramics

€ 300 - 400



426 A CHINESE POWDER BLUE GROUND YEN YEN VASE,

Kangxi, of flared baluster form, the tapering cylindrical neck decorated with courtesans and mountainous landscape, in famille verte enamels, the body with leaf and fan shaped reserves, filled with traditional Chinese depictions, on a circular undercut foot, 45cm high

€ 2,000 - 3,000



427 A LARGE CHINESE SCROLL PAINTING, in Ming style, painted with court figures in a garden landscape, and bearing Chinese inscription and seal to top right hand corner. 168 x 94cm; together with a horizontal example, painted with eight individual male and female figures, in traditional costume, including musicians, dancers, warriors, etc. 67 x 427cm

€ 700 - 1,000



428 A PAIR OF JAPANESE SATSUMA EARTHENWARE VASES,

c.1920s, each of ovoid form with flared neck and twin side handles decorated all over with court figures standing against a gilded geometric and trellis ground. 63cm high. (2)

€ 250 - 400



429 IRISH SCHOOL (20TH CENTURY)  
Still Life Study  
Oil on canvas, 75.5 x 60cm  
Signed "Brett '82"  
€ 200 - 300



430 BRITISH SCHOOL,  
19th Century  
Highland Landscapes at Sunset  
A pair, oil on canvas, 51 x 76cm  
Signed  
€ 1,000 - 2,000



431 FREDERICK HINES (FL. 1875-1897)  
'Early Spring' - Sheep in a Paddock  
Oil on canvas, 35.5 x 25.5cm  
Signed  
Exhibited: The Royal Society of British Artists,  
London 1881/2, No.265, Price £17.10.  
€ 300 - 400





432 K. ASHCROFT  
A Newlyn Scene, with a Seamstress and Fisherman Conversing by a Harbour Wall  
Oil on canvas, 63 x 58cm  
Signed and dated 1910

€ 800 - 1,200



433 ARTHUR TREVOR HADDON (1864-1941)  
Sheep in a Mountainous River Landscape  
Oil on canvas, 56 x 76cm  
Signed

€ 1,500 - 2,000





434 W.E. SPENCER  
College Green, Dublin  
Pencil, 20 x 28cm  
Signed  
€ 50 - 80

436 AFTER PAUL HENRY  
Cottages in Western Landscape  
Coloured print, 43 x 52cm  
€ 150 - 250



435 MICHAEL CRAIG  
The Rotunda Hospital  
A pair, engraving, 29 x 30cm  
With Rotunda seal  
€ 80 - 100

437 PAUL HENRY  
Cottages in Western Landscape  
Coloured print, 60 x 73cm  
Signed in pencil  
€ 200 - 400



438 MADONNA AND CHILD IN GILT FRAME  
€ 0 - 0



440 J.S. TEMPLETON, AFTER HAVERTY (19TH CENTURY)  
The Limerick Piper  
Monochrome lithograph, 56 x 44cm  
Contained within an elaborate giltwood frame  
€ 400 - 600



439 SCHOOL OF WILLIAM SADLER,  
19th Cent  
Figures in a River and Mountain Landscape  
Oil on mahogany coach panel, 17 x 21.5cm  
€ 300 - 500



441 GEORGE MELVIN RENNIE  
(SCOTTISH 1874-1953)  
Dinnet Moor  
Oil on canvas, 40 x 60cm  
Signed  
€ 400 - 600



442 AN OLD TURKISH RED GROUND WOOL CARPET, the large centre field woven with a floral medallion, within multiple lozenge shaped reserves and outer border stripes. 220 x 146cm

€500 – 800



444 A ZEIGLER STYLE LARGE WOOL CARPET, the large red ground field centred with a scroll medallion and contained within a border of palmettes and spandrels . 385 x 310cm

€2000 – 3000



443 A SMALL AFGHAN WOOL RUG, 20TH CENTURY, the rectangular field woven with five geometric columns and contained within diamond and hook borders. 150 x 100cm

€200 – 400

445 A FINE PERSIAN WOOL RUG, MID 20TH CENTURY, the large rectangular field filled with a quatrefoil medallion and surrounded by scrolling vines, tendrils and flowers, against a cream ground, set with spandrels to each other. 206 x 134cm

€600 - 1000



446 A 19TH CENTURY ROCOCO REVIVAL WALL MIRROR, of asymmetrical form, the shaped glass plate contained within a border of C-scrolls and foliate trails. 119cm high

€ 400 - 600



448 AN EDWARDIAN INLAID MAHOGANY RECTANGULAR CURIO TABLE, with glazed hinged top and sides, red plush interior and raised above lower tier on square tapering legs. 46 x 69cm

€ 150 - 250



447 A 19TH CENTURY GILDED RECTANGULAR OVERMANTLE MIRROR, the frame of half turned pilasters decorated with applied foliate motifs and surmounted scrollwork, fitted inset ebon reeded slip and raised on platform base. 139cm wide x 102cm high

€ 400 - 600



449 A LATE 19TH CENTURY INLAID WALNUT SHAPED RECTANGULAR FOLDING TOP GAMES TABLE, the checkerboard top within a leaf carved border, opening to reveal a red baize lined interior, above a shaped frieze with applied metal mounts and raised on cabriole legs and splayed feet. 88 x 44 x 77cm high

€ 400 - 600





450 AN EDWARDIAN INLAID ROSEWOOD SQUARE ENVELOPE FOLDING TOP CARD TABLE, opening to reveal a baize lined interior and counter wells, fitted single frieze drawer, lower tier and raised on square tapering legs. 56 x 56cm

€ 400 - 600



452 A PAIR OF 19TH CENTURY GILTWOOD CONVEX MIRRORS, of circular form, each surmounted with a figure of a carved eagle with outstretched wings above a glass plate contained within reeded ebon slip and encircled by a row of spheres, and carved leafy apron. 113cm high

€ 1,000 - 1,500



451 A VICTORIAN MAHOGANY RECTANGULAR THREE TIER DUMB WAITER, the raised panel back carved with an urn and foliate scrollwork, the tiers supported on turned and block side columns, splayed legs and stretcher. 114 x 42 x 160cm high

€ 300 - 400



453 A CARVED GILTWOOD COMPARTMENTAL OVERMANTLE MIRROR, in the Georgian taste, the rectangular frame bordered by foliate scrollwork. 92 x 122cm

€ 300 - 500



454 A WILLIAM IV ROSEWOOD D-SHAPED FOLDING TOP CARD TABLE, the plain top opening to reveal a baize interior, raised on turned acanthus wrapped centre column and terminating in carved lion paw feet on castors. 77 x 91cm

€ 600 - 800



456 A VICTORIAN INLAID WALNUT PIER CABINET, the moulded top above brass strung frieze inset with boxwood floral motifs, the glazed door flanked by conforming brass capped pilaster, on platform base. 105 x 79cm

€ 250 - 350



455 A CHINESE BLUE GROUND AND GILT DECORATED PORCELAIN TABLE LAMP, of baluster form, painted with dragons in flight, on later timber base, converted to electricity, the porcelain. 44cm high

€ 200 - 300



457 A SET OF FOUR FRENCH PROVINCIAL BEECH CARVED SALON CHAIRS, each with shaped floral cresting above upholstered and padded seat, with carved apron, and raised on cabriole legs. (4)

€ 500 - 800



458 TWO CARVED WALNUT SIDE CHAIRS,  
in late 17th century style with rectangular panel backs and  
seats covered in tapestry, seats distressed and raised on carved  
supports and stretchers

€ 500 - 700



460 A 19TH CENTURY MAHOGANY FRAMED  
UPHOLSTERED LOW CHAIR,  
with curved button back and padded seat on fluted  
tapering supports

€ 100 - 150



459 A VICTORIAN MAHOGANY FRAMED  
UPHOLSTERED ARMCHAIR,  
c.1840, with arched back covered in crimson button back velour  
on turned baluster supports

€ 200 - 300



461 TWO SIMILAR EDWARDIAN ARMCHAIRS  
IN THE GEORGIAN STYLE,  
one with shaped crest rail above pierced back,  
raised on square supports and H-stretcher, the other  
with outswept arms terminating in eagles heads,  
both with upholstered drop-in seats. (2)

€ 500 - 800



462 A WILLIAM IV IRISH PIERCED FOLIATE BRASS GALLERY CURB FENDER, raised on claw feet. 122cm wide  
€ 100 - 200



464 A BRASS FRAMED CIRCULAR CEILING LIGHT, 20th century, hung with slender fitted supports, with pierced frieze decorated with cherubs and fruiting vines, issuing six raised light sockets and silk apron. Approx. 67cm diameter  
€ 500 - 800



463 A FRENCH CAST BRASS FAN SHAPED FIRE GUARD, fitted with nine pierced folding panels, contained in a compact tapering support on leaf cast foot. 69cm high  
€ 200 - 300



465 A FRENCH GILT METAL TRIPTYCH DRESSING TABLE MIRROR, cast in the rococo style with arched fold out panels fitted with bevelled mirror plate, surmounted by classical trophies, mounted with cherubs on pierced scroll work feet and easel support. 47cm high  
€ 200 - 300





466 A PAIR OF AESTHETIC PERIOD EBONISED AND GILT DECORATED WALL MIRRORS, c.1870, each of rectangular form, fitted with oval glass plate set with painted gilt ground panels to each corner and repeated to the arched crest panel. 97cm high x 60cm wide

468 AN EDWARDIAN BRASS COLUMN STANDARD LAMP, with reeded column raised on shaped tripod supports and claw feet, with pink silk shade. 147cm high

€ 250 - 300



467 A COPPER AND BRASS FRAMED TRIPTYCH FIRESCREEN, with foldout rectangular panels fitted with bevelled mirror plates. 66cm high; together with a set of three fire tools and matching andirons. (6)

€ 300 - 500



469 A FRENCH BRASS PEACOCK TAIL FAN SHAPED FIREGUARD, 19th century, fitted with nine pierced brass panels within a foliate cast frame surmounted by loop handle. 101cm extended

€ 200 - 300





ADAM'S EST. 1887

## IMPORTANT IRISH ART AUCTION

---

Wednesday 1st June at 6:00pm

Viewing: Sunday 29th May through Wednesday 1st June to include fine works by Jack B Yeats, Roderic O'Connor, William Mulready, Sir William Orpen, Louis le Brocquy, Gerard Dillon, Colin Middleton, Sean Keating, Paul Henry, Letitia Hamilton, Daniel O'Neill, and many more.

Jack B Yeats RHA

*The Birds Are On The Move (1955)*

Estimate €60,000 - €80,000



## General Terms and Conditions of Business

The Auctioneer carries on business on the following terms and conditions and on such other terms or conditions as may be expressly agreed with the Auctioneer or set out in any relevant Catalogue. Conditions 12-21 relate mainly to buyers and conditions 22-32 relate mainly to sellers. Words and phrases with special meanings are defined in condition 1. Buyers and sellers are requested to read carefully the Cataloging Practice and Catalogue Explanation contained in condition 2.

### DEFINITIONS AND GENERAL CONDITIONS

#### DEFINITIONS

1. In these conditions the following words and expressions shall have the following meanings:  
'Auctioneer' – James Adam & Sons.  
'Auctioneer's Commission' – The commission payable to the Auctioneer by the buyer and seller as specified in conditions 13 and 25.

'Catalogue' – Any advertisement, brochure, estimate, price list or other publication.

'Forgery' – A Lot which was made with the intention of deceiving with regard to authorship, culture, source, origin, date, age or period and which is not shown to be such in the description therefore in the Catalogue and the market value for which at the date of the auction was substantially less than it would have been had the Lot been in accordance with the Catalogue description.

'Hammer Price' – The price at which a Lot is knocked down by the Auctioneer to the buyer.

'Lot' – Any item which is deposited with the Auctioneer with a view to its sale at auction and, in particular, the item or items described against any Lot number in any Catalogue.

'Proceeds of Sale' – The net amount due to the seller being the Hammer Price of the Lot after deducting the Auctioneer's Commission thereon under condition 25 the seller's contribution towards insurance under condition 26, such VAT as is chargeable and any other amounts due by the seller to the Auctioneer in whatever capacity howsoever arising.

'Registration Form or Register' – The registration form (or, in the case of persons who have previously attended at auctions held by the Auctioneer and completed registration forms, the register maintained by the Auctioneer which is compiled from such registration forms) to be completed and signed by each prospective buyer or, where the Auctioneer has acknowledged pursuant to condition 12 that a bidder acting as agent on behalf of a named principal, each such bidder prior to the commencement of an auction.

'Sale Order Form' – The sale order form to be completed and signed by each seller prior to the commencement of an auction.

'Total Amount Due' – The Hammer Price of the Lot sold, the Auctioneer's Commission due thereon under condition 13, such VAT as is chargeable and any additional interest, expenses or charges due hereunder.

'V.A.T.' – Value Added Tax.

#### Cataloguing Practice and Catalogue Explanations

2. Terms used in Catalogues have the following meanings and the Cataloguing Practice is as follows:

The first name or names and surname of the artist;  
In the opinion of the Auctioneer a work by the artist.

The initials of the first name(s) and the surname of the artist;  
In the opinion of the Auctioneer a work of the period of the artist and which may be in whole or in part the work of the artist.

The surname only of the artist;  
In the opinion of the Auctioneer a work of the school or by one of the followers of the artist or in his style.

The surname of the artist preceded by 'after';  
In the opinion of the Auctioneer a copy of the work of the artist.  
'Signed'/'Dated'/'Inscribed';  
In the opinion of the Auctioneer the work has been signed/dated/inscribed by the artist.  
'With Signature'/'with date'/'with inscription';  
In the opinion of the Auctioneer the work has been signed/dated/inscribed by a person other than the artist.

'Attributed to';  
In the opinion of the Auctioneer probably a work of the artist.

Studio of/Workshop of  
In the opinion of the Auctioneer a work executed in the studio of the artist and possibly under his supervision.

'Circle of';  
In the opinion of the Auctioneer a work of the period of the artist and showing his influence.

'Follower of';  
In the opinion of the Auctioneer a work executed in the artist's style yet not necessarily by a pupil.

'Manner of';  
In the opinion of the Auctioneer a work executed in artist's style but of a later date.

None of the terms above are appropriate but in the Auctioneer's opinion the work is a work by the artist named.

### GENERAL CONDITIONS

#### Auctioneer Acting as Agent

3. The Auctioneer is selling as agent for the seller unless it is specifically stated to the contrary. The Auctioneer as agent for the seller is not responsible for any default by the seller or the buyer.

#### Auctioneer Bidding on behalf of Buyer

4. It is suggested that the interests of prospective buyers are best protected and served by the buyers attending at an auction. However, the Auctioneer will, if instructed, execute bids on behalf of a prospective buyer. Neither the Auctioneer nor its employees, servants or agents shall be responsible for any neglect or default in executing bids or failing to execute bids.

#### Admission to Auctions

5. The Auctioneer shall have the right exercisable in its absolute discretion to refuse admission to its premises or attendance at its auctions by any person.

#### Acceptance of Bids

6. The Auctioneer shall have the right exercisable in its absolute discretion to refuse any bids, advance the bidding in any manner it may decide, withdraw or divide any Lot, combine any two or more Lots and, in the case of a dispute, to put any Lot up for auction again.

#### Indemnities

7. Any indemnity given under these conditions shall extend to all actions, proceedings, claims, demands, costs and expenses whatever and howsoever incurred or suffered by the person entitled to the benefit of the indemnity and the Auctioneer declares itself to be a trustee of the benefit of every such indemnity for its employees, servants or agents to the extent that such indemnity is expressed to be for their benefit.

#### Representations in Catalogues

8. Representations or statements made by the Auctioneer in any Catalogue as to contribution, authorship, genuineness, source, origin, date, age, provenance, condition or estimated selling price or value is a statement of opinion only. Neither the Auctioneer nor its employees, servants or agents shall be responsible for the accuracy of any such opinions. Every person interested in a Lot must exercise and rely on their own judgment and opinion as to such matters.



9. The headings of the conditions herein contained are inserted for convenience of reference only and are not intended to be part of, or to effect, the meaning or interpretation thereof.

#### Governing Law

10. These conditions shall be governed by and construed in accordance with Irish Law.

#### Notices

11. Any notice or other communication required to be given by the Auctioneer hereunder to a buyer or a seller shall, where required, be in writing and shall be sufficiently given if delivered by hand or sent by post to, in the case of the buyer, the address of the buyer specified in the Registration Form or Register, and in the case of the seller, the address of the seller specified in the Sale Order Form or to such other address as the buyer or seller (as appropriate) may notify the Auctioneer in writing. Every notice or communication given in accordance with this condition shall be deemed to have been received if delivered by hand on the day and time of delivery and if delivered by post three (3) business days after posting.

#### The Buyer

12. The buyer shall be the highest bidder acceptable to the Auctioneer who buys at the Hammer Price. Any dispute which may arise with regard to bidding or the acceptance of bids shall be settled by the Auctioneer. Every bidder shall be deemed to act as principal unless the Auctioneer has prior to the auction, acknowledged in writing that a bidder is acting as agent on behalf of a named principal.

#### Commission

13. The buyer shall pay the Auctioneer a commission at the rate of 20%, exclusive of V.A.T..

#### Payment

14. Unless credit terms have been agreed with the Auctioneer before the auction the buyer of a Lot shall pay to the Auctioneer within one (1) day from the date of the auction the Total Amount Due. Notwithstanding this, the Auctioneer may, in its sole discretion, require a buyer to pay a deposit of 25% of the Total Amount Due at the conclusion of the auction.

The Auctioneer may apply any payments received by a buyer towards any sums owing from that buyer to the Auctioneer on any account whatever regardless of any directions of the buyer or his agent in that regard whether express or implied.

The Auctioneer shall only accept payment from successful bidders in cash or by the bidder's own cheque. Cheques drawn by third parties, whether in the Auctioneer's favour or requiring endorsement, shall not be accepted.

#### Reservation of Title

15. Notwithstanding delivery or passing of risk to the buyer the ownership of a Lot shall not pass to the buyer until he has paid to the Auctioneer the Total Amount Due.

#### Collection of Purchases

16. The buyer shall at his own expense collect the Lot purchased not later than seven (7) days after the date of the auction but (unless credit terms have been agreed with the Auctioneer pursuant to condition 14) not before payment to the Auctioneer of the Total Amount Due.

The buyer shall be responsible for any removal, storage and insurance charges in respect of any Lot which is not taken away within seven (7) days after the date of the auction.

The purchased Lot shall be at the buyer's risk in all respects from the earlier of the time of collection or the expiry of one (1) day from the date of the auction. Neither the Auctioneer nor its employees, servants or agents shall thereafter be liable for any loss or damage of any kind howsoever caused while a purchased Lot remains in its custody or control after such time.

#### Packaging and Handling of Purchased Lots

17. Purchased Lots may be packed and handled by the Auctioneer, its employees, servants or agents. Where this is done it is undertaken solely as a courtesy to buyers and at the discretion of the Auctioneer. Under no circumstances shall the Auctioneer, its employees, servants or agents be liable for damage of any kind and howsoever caused to glass or frames nor shall the Auctioneer be liable for the errors or omissions of, or for any damage caused by, any packers or shippers which the Auctioneer has recommended.

#### Non-Payment or Failure to Collect Purchased Lots

18. If a buyer fails to pay for and/or collect any purchased Lot by the dates herein specified for payment and collection the Auctioneer shall, in its absolute discretion and without prejudice to any other rights or remedies it may have, be entitled to exercise one or more of the following rights or remedies without further notice to the buyer:

- (a) To issue court proceedings for damages for breach of contract;
- (b) To rescind the sale of that Lot or any other Lots sold to the buyer whether at that or at any other auction;
- (c) To resell the Lot or cause it to be resold whether by public auction or private sale. In the event that there is a deficiency between the Total Amount Due by the buyer and the amount received by the Auctioneer on such resale after deduction of any necessary expenses the difference shall be paid to the Auctioneer by the buyer. Any surplus arising shall belong to the seller.
- (d) To store (whether at the Auctioneer's premises or elsewhere) and insure the purchased Lot at the expense of the buyer.
- (e) To charge interest on the Total Amount Due at the rate of 2% over and above the base rate from time to time of Bank of Ireland or if there be no such rate, the nearest equivalent thereto as determined by the Auctioneer in its absolute discretion from the date on which payment is due hereunder to the date of actual payment.
- (f) To retain that Lot or any other Lot purchased by the buyer whether at the same or any other auction and release same to the buyer only after payment to the Auctioneer of the Total Amount Due.
- (g) To apply any sums which the Auctioneer received in respect of Lots being sold by the buyer towards settlement of the Total Amount Due.
- (h) To exercise a lien on any property of the buyer in the possession of the Auctioneer or whatever reason.

#### Liability of Auctioneer and Seller

19. Prior to auction ample opportunity is given for the inspection of the Lots on sale and each buyer by making a bid acknowledges that he has, by exercising and relying on his own judgment, satisfied himself as to the physical condition, age and Catalogue description of each Lot (including but not restricted to whether the Lot is damaged or has been repaired or restored). All Lots are sold with all faults and imperfections and errors of description. None of the seller, the Auctioneer nor any of their employees, servants or agents shall be responsible for any error of description or for the condition or authenticity of any Lot. No warranty whatsoever is given by the seller or Auctioneer or by any of their employees, servants or agents in respect of any Lot and any condition or warranty express or implied by statute or otherwise is hereby specifically excluded.

#### Forgeries

20. Any amount paid by a buyer in respect of a Lot which, if it is proved within three (3) years of the date of the auction at which it was purchased, to have been a Forgery shall be refunded to the seller subject to the provisions hereof, provided that:

- (a) The Lot has been returned by the buyer to the Auctioneer within three (3) years of the date of the auction in the same condition in which it was at the time of the auction together with evidence proving that it is a Forgery, the number of the Lot and the date of the auction at which it was purchased;
- (b) The Auctioneer is satisfied that the Lot is a Forgery and that the buyer has and is able to transfer good and marketable title to the Lot free from any third party claims;

FURTHER PROVIDED THAT the buyer shall have no rights hereunder if:  
(i) The description of the Lot in the Catalogue at the time of the auction was in accordance with the then generally accepted opinion of scholars or experts or fairly indicated that there was a conflict of such opinion;

(ii) The only method of establishing at the time of the auction in question that the Lot was a Forgery would have been by means of scientific processes which were not generally accepted for use until after the date of the auction or which were unreasonably expensive or impractical.

The buyer's sole entitlement under this condition is to a refund of the actual amount paid by him in respect of the Lot. Under no circumstances shall the Auctioneer be liable for any damage, loss (including consequential, indirect or economic loss) or expense suffered or incurred by the buyer by reason of the Lot being a Forgery.

The benefit of this condition shall be solely and exclusively for the buyer and shall not be assignable. The buyer shall for the purpose of this con

#### Photographs

21. The buyer authorises the Auctioneer at any time to make use of any photographs or illustrations of the Lot purchased by the buyer for such purposes as the Auctioneer may require.

#### CONDITIONS WHICH MAINLY CONCERN THE SELLER

##### Auctioneer's Discretion

22. With regard to the sale of any Lot the Auctioneer shall have the following powers exercisable solely in the discretion of the Auctioneer:

- (i) To decide whether to offer any Lot for sale or not;
- (ii) To decide whether a particular Lot is suitable for sale by the Auctioneer and, if so, to determine which auction, the place and date of sale, the conditions of sale and the manner in which such sale should be conducted;
- (iii) To determine the description of any Lot in a Catalogue.
- (iv) To decide whether the views of any expert shall be obtained and to submit Lots for examination by any such experts.
- (v) To determine what illustration of a Lot (if any) is to be included in the Catalogue.

##### Seller's Warranty and Indemnity

23. The seller warrants to the Auctioneer and to the buyer that he is the true owner of the Lot or is legally authorised to sell the Lot on behalf of the true owner and can transfer good and marketable title to the Lot free from any third party claims. As regards Lots not held by the Auctioneer on its premises or under its control the seller warrants and undertakes to the Auctioneer and the buyer that the Lot will be available and in a deliverable state on demand by the Auctioneer or buyer. The seller shall indemnify the Auctioneer and the buyer or any of their respective employees, servants or agents against any loss or damage suffered by any of them in consequence of any breach of the above warranties or undertakings by the seller.

##### Reserves

24. Subject to the Auctioneer's discretion, the seller shall be entitled prior to the auction to place a reserve on any Lot. All reserves must be agreed in advance by the Auctioneer and entered on the Sale Order Form or subsequently be confirmed in writing to the Auctioneer prior to auction. This also applies to changes in reserves. A reserve may not be placed upon any Lots under IRE100 in value. The reserve shall be the minimum Hammer Price at which the Lot may be sold by the Auctioneer. A reserve once in place may only be changed with the consent of the Auctioneer. A commission shall be charged on the 'knock-down' bid for Lots which fail to reach the reserve price. Such commission shall be 5% of the 'knock-down' bid. This commission and any VAT payable thereon must be paid before removal of the Lot after the auction. The minimum commission hereunder shall be IR £25. The Auctioneer may in its sole discretion sell a Lot at a Hammer Price below the reserve therefore but in such case the Proceeds of Sale to which the seller shall be entitled shall be the same as they would have been had the sale been at the reverse.

Unless a reserve has been placed on a Lot in accordance with the provisions set out above such Lot shall be put up for sale without reserve.

In the event that any reserve price is not reached at auction then for so long as the Lot remains with the Auctioneer and to the extent that the Lot has not been re-entered in another auction pursuant to condition 31 the seller authorises the Auctioneer to sell the Lot by private treaty at not less than the reserve price. The Auctioneer shall ensure that in such a case those conditions herein which concern mainly the buyer shall, with any necessary modification, apply to such sale.

##### Commission

25. The seller shall pay the Auctioneer commission at the rate of 10% on the Hammer Price of all Lots sold on behalf of the seller at Irish Art Sales and 17.5% on the Hammer Price of all Lots sold on behalf of the seller at Fine Art, Wine and Militaria Sales together with V.A.T. thereon at the applicable rate. The seller authorises the Auctioneer to deduct from the Hammer Price paid by the buyer the Auctioneer's Commission under this condition; VAT payable at the applicable rates and any other amounts due by the seller to the Auctioneer in whatever capacity howsoever arising. The seller agrees that the Auctioneer may also receive commission from the buyer pursuant to condition 13.

##### Insurance

26. Unless otherwise instructed by the seller, all Lots (with the exception of motor vehicles) deposited with the Auctioneer or put under its control for sale shall automatically be insured by the Auctioneer under the Auctioneer's own fine arts policy for such sum as the Auctioneer shall from time to time in its absolute discretion determine. The seller

shall pay the Auctioneer a contribution towards such insurance at the rate of 1% of the Hammer Price plus VAT. If the seller instructs the Auctioneer not to insure a Lot then the Lot shall at all times remain at the risk of the seller who undertakes to indemnify the Auctioneer and hold the Auctioneer harmless against any and all claims made or proceedings brought against the Auctioneer of whatever nature and howsoever and wheresoever occurring for loss or damage to the Lot. The sum for which a Lot is covered for insurance under this condition shall not constitute and shall not be relied upon by the seller as a representation, warranty or guarantee as to the value of the Lot or that the Lot will, if sold by the Auctioneer, be sold for such amount. Such insurance shall subsist until such time as the Lot is paid for and collected by the buyer or, in the case of Lots sold which are not paid for or collected by the buyer by the due date hereunder for payment or collection such due date or, in the case of Lots which are not sold, on the expiry of seven (7) days from the date on which the Auctioneer has notified the seller to collect the Lots.

##### Rescission of Sale

27. If before the Auctioneer has paid the Proceeds of Sale to the seller the buyer proves to the satisfaction of the Auctioneer that the Lot sold is a Forgery and the requirements of condition 20 are satisfied the Auctioneer shall rescind the sale and refund to the buyer any amount paid to the Auctioneer by the buyer in respect of the Lot.

##### Payment of Proceeds of Sale

28. The Auctioneer shall remit the Proceeds of Sale to the seller not later than thirty (30) days after the date of the auction, provided however that, if by that date, the Auctioneer has not received the Total Amount Due from the buyer then the Auctioneer shall remit the Proceeds of Sale within seven (7) working days after the date on which the Total Amount Due is received from the buyer. If credit terms have been agreed between the Auctioneer and the buyer the Auctioneer shall remit to the seller the Proceeds of Sale not later than thirty (30) days after the date of the auction unless otherwise agreed by the seller.

If before the Total Amount Due is paid by the buyer the Auctioneer pays the seller an amount equal to the Proceeds of Sale then title to the Lot shall pass to the Auctioneer.

If the buyer fails to pay the Auctioneer the Total Amount Due within fourteen (14) days after the date of the auction, the Auctioneer shall endeavour to notify the seller and take the seller's instructions on the course of action to be taken and, to the extent that it is in the sole opinion of the Auctioneer feasible, shall endeavour to assist the seller to recover the Total Amount Due from the buyer provided that nothing herein shall oblige the Auctioneer to issue proceedings against the buyer in the Auctioneer's own name. If circumstances do not permit the Auctioneer to take instructions from the seller or, if after notifying the seller, it does not receive instructions within seven (7) days, the Auctioneer reserves the right, and is hereby authorised by the seller at the seller's expense, to agree special terms for payments of the Total Amount Due, to remove, store and insure the Lot sold, to settle claims made by or against the buyer on such terms as the Auctioneer shall in its absolute discretion think fit, to take such steps as are necessary to collect monies due by the buyer to the seller and, if necessary, to rescind the sale and refund money to the buyer.

##### Payment of Proceeds to Overseas Sellers

29. If the seller resides outside Ireland the Proceeds of Sale shall be paid to such seller in Irish Pounds unless it was agreed with the seller prior to the auction that the Proceeds of Sale would be paid in a currency (other than Irish Pounds) specified by the seller in which case the Proceeds of Sale shall be paid by the Auctioneer to the seller in such specified currency (provided that that currency is legally available to the Auctioneer in the amount required) calculated at the rate of exchange quoted to the Auctioneer by its bankers on the date of payment.

#### Unsold Lots

31. Where any Lot fails to sell at auction the Auctioneer shall notify the seller accordingly and (in the absence of agreement between the seller and the Auctioneer to the contrary) such Lot may, in the absolute discretion of the Auctioneer, be re-entered in the next suitable auction unless instructions are received from the seller to the contrary, otherwise such Lots must be collected at the seller's expense within the period of thirty (30) days of such notification from the Auctioneer.

Upon the expiry of such period the Auctioneer shall have the right to sell such Lots by public auction or private sale and on such terms as the Auctioneer in its sole discretion may think fit. The Auctioneer shall be entitled to deduct from the price received for such Lots any sums owing to the Auctioneer in respect of such Lots including without limitation removal, storage and insurance expenses, any commission and expenses due in respect of the prior auction and commission and expenses in respect of the subsequent auction together with all reasonable expenses before remitting the balance to the seller. If the seller cannot be traced the balance shall be placed in a bank account in the name of the Auctioneer for the seller. Any deficit arising shall be due from the seller to the Auctioneer. Any Lots returned at the seller's request shall be returned at the seller's risk and expense and will not be insured in transit unless the Auctioneer is so instructed by the seller.

#### Auctioneer's Right to Photographs and Illustrations

32. The seller authorises the Auctioneer to photograph and illustrate any Lot placed with it for sale and further authorises the Auctioneer to use such photographs and illustrations and any photographs and illustrations provided by the seller at any time in its absolute discretion (whether or not in connection with the auction).

Catalogue illustrations are included at the discretion of the Auctioneer. Illustration charges will be calculated on the particular category of sale. These charges are subject to change. Irish Art Sale Illustrations: €150.00 full page, €100.00 half page, €50.00 other sizes. Fine Art Illustrations: Scaled fee: €100.00 for lots sold for €3,000.00 and over, hammer price, €50.00 for lots sold under €3,000.00 hammer price. All other sales: €25.00 per illustration. All lots illustrated and not sold are charged €25.00 per illustration.

#### VAT

34. It is presumed, unless stated to the contrary, that the items listed herein are auction scheme goods as defined in the Finance Act 1995.

#### 35. Artist's Resale Rights (Droit de Suite)

##### Government Regulations (S.1. 312/2006)

Under this legislation a royalty (droit de suite) is payable to artists or the artist's heirs (if deceased in the last 70 years) of E.U. Nationality on all works resold for €3,000 or more, other than those sold by the artist or the artist's agent.

The resale royalty payable is calculated as follows:

---

From €3,000 to €50,000 4%  
From €50,000.01 to €200,000 3%  
From €200,000.01 to €350,000 1%  
From €350,000.01 to €500,000 0.5%  
Exceeding €500,000 0.25%

The total amount of royalty payable on any individual sale shall not exceed €12,500 The seller is liable for payment (paragraph 7.1 of Government Regulations (S.1. 312/2006) of this royalty on completion of the sale. The artist may request from the Auctioneer any information necessary to secure payment.

The Auctioneer will automatically deduct the amount due from the proceeds of sale and will hold in trust for the artist, their heirs or their representative for a period of 3 years from the date of sale. A vendor may choose to check the ARR Waiver on the Sale Receipt Contract indicating that they accept sole responsibility for the payment and authorises the Auctioneers to disclose their contact details to the artist, their heirs or their representative.