

SUNDAY 11<sup>TH</sup> MAY 2014 AT 11.30AM

# SUNDAY INTERIORS AUCTION

INCLUDING CONTENTS FROM DEEPWELL HOUSE  
BLACKROCK CO DUBLIN

ADAM'S EST 1887



LOT 473



AUCTION SUNDAY 11TH MAY 2014 AT 11.30AM

**SUNDAY INTERIORS AUCTION**

## CONTACTS



Brian Coyle FSCSI FRICS  
CHAIRMAN



James O'Halloran BA FSCSI FRICS  
MANAGING DIRECTOR  
j.ohalloran@adams.ie



Stuart Cole MSCSI MRICS  
DIRECTOR  
s.cole@adams.ie



David Britton BBS ACA  
DIRECTOR  
d.britton@adams.ie



Eamon O'Connor BA  
DIRECTOR  
e.connor@adams.ie



Nick Nicholson  
CONSULTANT  
n.nicholson@adams.ie



Kieran O'Boyle BA Hdip ASCSI  
FINE ART DEPARTMENT MANAGER  
k.boyle@adams.ie



Ronan Flanagan  
FINE ART DEPARTMENT  
ronan@adams.ie



Abigail Bernon BA  
FINE ART DEPARTMENT  
abigail@adams.ie



Caroline Kevany BA  
FINE ART DEPARTMENT  
caroline@adams.ie



Karen Regan BA  
FINE ART DEPARTMENT  
karen@adams.ie

## IMPORTANT INFORMATION FOR PURCHASERS

### 1. Estimates and Reserves

These are shown below each lot in this sale. All amounts shown are in Euro. The figures shown are provided merely as a guide to prospective purchasers. They are approximate prices which are expected, are not definitive and are subject to revision. Reserves, if any, will not be any higher than the lower estimate.

### 2. Paddle Bidding

All intending purchasers must register for a paddle number before the auction. Please allow time for registration. Potential purchasers are recommended to register on viewing days.

### 3. Payment, Delivery and Purchasers Premium

Monday 12th May 2014, 10.00am - 5pm Under no circumstances will delivery of purchases be given whilst the auction is in progress. All purchases must be paid for and removed from the premises not later than 5pm on Monday 12th May 2014 at the purchaser's risk and expense. After this time all uncollected lots will be removed to commercial storage and additional charges will apply.

Auctioneers commission on purchases is charged at the rate of 20% (exclusive of VAT). Terms: Strictly cash, bankers draft or cheque drawn on an Irish bank. Cheques will take a minimum of five working days to clear the bank, unless they have been vouched to our satisfaction prior to the sale, or you have a previous cheque payment history with Adam's. Purchasers wishing to pay by credit card (Visa & Mastercard) may do so, however, it should be noted that such payments will be subject to an administrative fee of 1.5% on the invoice total. American Express is subject to a charge of 3.65% on the invoice total. Debit cards including laser card payments are not subject to a surcharge, there are however daily limits on Laser card payments. Bank Transfer details on request. Please ensure all bank charges are paid in addition to the invoice total, in order to avoid delays in the release of items. Goods will only be released upon clearance through the bank of all monies due. Artists Resale Rights (Droit de Suite) is NOT payable by purchasers.

### 4. VAT Regulations

All lots are sold within the auctioneers VAT margin scheme. Revenue Regulations require that the buyers premium must be invoiced at a rate which is inclusive of VAT. This is not recoverable by any VAT registered buyer.

5. It is up to the bidder to satisfy themselves prior to buying as to the condition of a lot. Whilst we make certain observations on the lot, which are intended to be as helpful as possible, references in the condition report to damage or restoration are for guidance only and should be evaluated by personal inspection by the bidder or a knowledgeable representative. The absence of such a reference does not imply that an item is free from defects or restoration, nor does a reference to particular defects imply the absence of any others. The condition report is an expression of opinion only and must not be treated as a statement of fact.

Please ensure that condition report requests are submitted before 12 noon on Saturday 23rd November as we cannot guarantee that they will be dealt with after this time.

### 6. Absentee Bids

We are happy to execute absentee or written bids for bidders who are unable to attend and can arrange for bidding to be conducted by telephone. However, these services are subject to special conditions (see conditions of sale in this catalogue). All arrangements for absentee and telephone bidding must be made before 5pm on the day prior to sale. Cancellation of bids must be confirmed before this time and cannot be guaranteed after the auction as commenced.

Bidding by telephone may be booked on lots with a minimum estimate of €500. Early booking is advisable as availability of lines cannot be guaranteed.

7. All lots are being sold under the Conditions of Sale as printed in this catalogue and on display in the salerooms

## CREATE A 'MY ADAM'S' ACCOUNT

You can now create your own account with us by signing up and registering your particulars online at [www.adams.ie](http://www.adams.ie)

The process involves uploading identification by way of passport or driving licence and supplying valid credit card information. This is a once off request for security purposes, and once the account is activated you will not be asked for this information again. You can leave absentee bids online, and add, edit or amend bids accordingly as well as other useful functions including paying your invoice.

# SUNDAY INTERIORS AUCTION

## AUCTION

Sunday 11th May 2014 at 11.30am

## VENUE

26 St. Stephen's Green, Dublin 2

## SALE CODE

This sale may be referred to as 8130 in all correspondence

## CATALOGUE

€10.00 (PLUS POSTAGE & PACKAGING)

Free to download at [www.adams.ie](http://www.adams.ie)

or download the Adam's app and browse the catalogue on ipad or iphone

## VIEWING

Thursday	8 <sup>th</sup> May	9.30pm - 5.00pm
Friday	9 <sup>th</sup> May	9.30pm - 5.00pm
Saturday	10 <sup>th</sup> May	11.00am - 5.00pm

## COLLECTIONS

All lots must be paid for and collected before 5.00pm on Monday 12th May at the purchaser's risk and expense, after which time items will be removed to commercial storage.

## ADAM'S

26 St. Stephen's Green  
Dublin 2  
Tel +353 1 6760261  
Fax + 353 1 6624725  
[info@adams.ie](mailto:info@adams.ie)  
[www.adams.ie](http://www.adams.ie)

Bid online at our auctions through  
**the-saleroom.com**





Lot 1

- 1 AN IRISH GEORGE III SILVER-GILT SEAL END SPOON,  
Dublin 1762, mark of John Craig, the fig shaped bowl crested to the reverse, thought to be that of Sir Compton Meade Bart., Domville, Santry

€300 - 500



Lot 2



Lot 3

- 2 A SET OF SIX RUSSIAN WHITE METAL DESSERT SPOONS,  
with scrolling handle terminals, engraved with initials "FF", with plain pointed bowls

€150 - 250

- 3 A COLLECTION OF RUSSIAN WHITE METAL ITEMS,  
comprising- an oval bowl on hocked feet;  
- a triton fork with twist handle and fish terminal;  
- and a spoon with rope twist handle (3)

€200 - 300



Lot 4

- 4 A SET OF SIX IRISH GEORGE III BRIGHT CUT ENGRAVED SILVER SALT SPOONS,  
Dublin (no date letter), mark of Jonas Osborne (1784-1809), the tapering point handles decorated with bright cut edges and oval reserves with engraved initials and trailing bellflowers, circular bowls. 10.5cm long

€300 - 500



Lot 5

- 5 A COLLECTION OF SEVEN SMALL SILVER SPOONS,  
comprising:  
- a pair of George III fiddle pattern mustard spoons, Dublin 1816, mark of Richard Sawyer;  
- a pair William IV kings pattern salt spoons, Dublin 1833, mark of Charles Marsh;  
- a William IV fiddle pattern jam spoon, Dublin 1834, mark of Thomas Meade;  
- and two other spoons;  
together with a silver plated and bone handled cutlet bone holder (8)

€200 - 400



Lot 6

- 6 A MISCELLANEOUS COLLECTION OF SILVER ITEMS,  
comprising a Georgian bright cut engraved jug, London; a Christening cup and napkin ring; a twin handled cup, rubbed, Dublin marks; a glass lined butter dish; a white metal wine taster (6)

€200 - 400



7 A SET OF FOUR IRISH GEORGE III SILVER PEDESTAL SALTS, Dublin 1796, mark of William Bond, each of plain circular form with reeded rims, on moulded pedestal feet, with blue liners, crested (c.12ozs in all). 6cm high, 7.5cm diameter

*Provenance: Deepwell, Blackrock, Co. Dublin €1200 - 1600*



Lot 8

- 8 TWO IRISH GEORGE III SILVER POINT HANDLED BASTING SPOONS, Dublin 1785, mark of J. Power, the plain tapering handles with crested terminals (c.7ozs). 31cm and 32cm long

*Provenance: Deepwell, Blackrock, Co. Dublin*

€600 - 800



Lot 9

- 9 AN IRISH GEORGE III SILVER TAPERING POINT HANDLED SOUP LADLE, Dublin c.1785, mark of J. Stoyte, plain decoration, the handle terminal crested, plain circular bowl (c.4ozs). 32.5cm long

*Provenance: Deepwell, Blackrock, Co. Dublin*

€500 - 600



Lot 10

- 10 AN IRISH GEORGE III SILVER TAPERING POINT HANDLED SOUP LADLE, Dublin 1785, mark of Michael Keating, the curved handle terminal initialled, plain circular bowl, plain overall decoration (c.5.5ozs). 35.5cm long

*Provenance: Deepwell, Blackrock, Co. Dublin*

€500 - 600



Lot 11

- 11 A PAIR OF IRISH GEORGE III SILVER POINT HANDLED BASTING SPOONS, Dublin 1806, mark of Samuel Neville, marked "NEILL", the plain tapering handles later crested, one with twice crested (c.7ozs). 32.5cm long

*Provenance: Deepwell, Blackrock, Co. Dublin*

€600 - 800



Lot 12

- 12 THREE IRISH GEORGIAN SILVER PLAIN SAUCE LADLES, comprising, a fiddle pattern example Dublin 1807, mark of A. Murphy; another fiddle pattern example, Dublin 1835, mark of Samuel Neville; and a tapering handled example, Dublin 1847, mark of J. Smyth, each with handles crested (c.4.5ozs in all). The largest 17.5cm long (3)

*Provenance: Deepwell, Blackrock, Co. Dublin*

€200 - 300



Lot 13

- 13 A SET OF SIX IRISH GEORGE III POINT HANDLED SILVER TABLESPOONS, Dublin 1793, mark of John Power, the plain tapering handles later engraved with lion crest (c.11ozs)

*Provenance: Deepwell, Blackrock, Co. Dublin*

€200 - 400

- 14 A GEORGE II SILVER CASTOR,  
London 1749, of circular baluster form, with bell shaped  
finial and banded body, raised on rim foot, crested and  
with motto "RYDE THROUGH" below a crowned horse  
head (c.4ozs). 14.5cm high

*Provenance: Deepwell, Blackrock, Co. Dublin*

€250 - 450



Lot 14

- 15 A GEORGE IV SILVER THREE PIECE COFFEE  
SERVICE,  
Sheffield 1938, in the Art Deco taste, of rectangular taper-  
ing form, having bone handle and finial, with stylised legs  
and pad feet (c.47ozs all in incl. handles)

*Provenance: Deepwell, Blackrock, Co. Dublin*

€600 - 800



Lot 15

- 16 A MODERN SILVER CIRCULAR WINE FUNNEL,  
by Asprey of London, in two parts, with plain decoration  
(c.3ozs). 12.5cm long;  
together with an Irish silver tea strainer and stand, Dub-  
lin 1973, mark of Jewellery Manufacturing Co., in Geor-  
gian taste, with pierced handles. 10.6cm long over handles

*Provenance: Deepwell, Blackrock, Co. Dublin*

€150 - 250



Lot 16

- 17 A SILVER WINE TASTER,  
Birmingham 1979, of circular form, with ring han-  
dle, and with central band of repoussé dragon  
decoration interposed with oval vacant reserves;  
together with a set of six silver labels, comprising "WHIS-  
KY", "WHISKEY", "SHERRY", "VODKA", "GIN",  
"PORT", with Birmingham import marks, each of shaped  
rectangular form, with reeded rims and canted corners;  
together with two pairs of silver plated grape scissors, each  
with naturalistically cast handles in the form of fruiting  
vine branches (8)

*Provenance: Deepwell, Blackrock, Co. Dublin*

€150 - 250



Lot 17

- 18 A RARE SILVER CASED NUTMEG GRATER,  
Birmingham marks; together with a Georgian silver mini-  
ature two handle porringer, London 1723; and an Irish  
George III silver buckle, Dublin marks, (3)

€300 - 400



Lot 18



- 19 A GEORGE III IRISH SILVER TAPER HANDLE SOUP LADLE, with scallop shaped bowl, 33cm long, marks indistinct, possibly 1762

€200 - 400



- 20 A GEORGE III SILVER FIDDLE PATTERN SOUP LADLE, London 1810

€150 - 250



- 21 A GEORGE III IRISH SILVER TAPER HANDLE STRAINING SPOON, with bright cut decoration, Dublin 1806, William Law, 32cm long

€250 - 300



- 22 A GEORGE III IRISH SILVER FIDDLE PATTERN STRAINING SPOON, Dublin 1798

€200 - 300



- 23 A VICTORIAN IRISH SILVER FIDDLE AND THREAD PATTERN SOUP LADLE, Dublin 1875, 34cm long

€200 - 400



- 24 A SET OF EIGHT GEORGE III IRISH SILVER FIDDLE AND THREAD PATTERN SOUP SPOONS, Dublin 1801, with engraved Cloncurry crest and a matching serving spoon

€150 - 250

- 25 A GEORGE III IRISH PROVINCIAL SILVER TWO HANDLE SUGAR BOWL, marked "STERLING", the body pierced with trellis work and set with oval repoussé vignettes of centaurs and fauns with swags and acanthus leaf banding having entwined serpent handles on a square foot base (c.8ozs). 14cm high, 18.5cm wide over handles

€500 - 800



- 26 A GEORGE III SILVER TWO HANDLE PEDESTAL SUGAR BOWL, London 1775, mark of Benjamin Stephenson, the domed fluted lid with flame finial above a body with repoussé bellflower swags raised on a fluted spreading foot with square base

€300 - 400





Lot 27

- 27 AN UNUSUAL WHITE METAL LONG CYLINDRICAL CONTAINER with pull off cup and segmented body with beaded border, possibly a scroll container

€150 - 250



Lot 28

- 28 A GEORGE IV IRISH SILVER SHAPED OVAL SNUFF BOX, by Robert W. Smith, Dublin 1828, the body decorated with bright cup banding and monogram, having a hinged lid

€150 - 250



Lot 29

- 29 A GEORGIAN ROCOCO WAISTED CIRCULAR SILVER DISH RING, marks difficult to identify, possibly Dublin 1827, no makers mark visible, the pierced body with continuous decoration of seated Chinaman, pagodas, figures praying, walking, amongst a body of scrollwork entwined with flower heads and foliage, central cartouche, crested (c.9.5ozs). 20cm diameter

€800 - 1200



Lot 30

- 30 AN IRISH VICTORIAN SILVER PEAR SHAPED COFFEE POT, Dublin 1885, mark probably that of John Smith, retailed by E.M. & Co., handle and lid marked, the foliate finial (apparently un-marked), applied to a domed circular lid with continuous foliate decoration, applied 'c' scroll handle chased with acanthus leaf texture, the body with slender neck decorated with stylised panels with hanging bellflowers and foliage, the body embossed and chased with roses and flowering poppies, amongst scrolls enclosing opposing cartouches, crested to one side with rearing lion, and engraved with initials to the other, raised on a circular spreading foot (c. 31ozs). 27cm high, 23cm wide over handle and spout

€500 - 800

- 31 A PAIR OF VICTORIAN GLASS AND SILVER MOUNTED CLARET JUGS, London 1852, mark of James Charles Edington, the faceted baluster bodies engraved with trailing vines and fuchsias, the silver mounts cast with satyr mask and robust scrollwork. 30cm high

*Provenance: Deepwell, Blackrock, Co. Dublin*

€2000 - 3000





- 32 AN IRISH GEORGE III PLAIN CIRCULAR SILVER SUGAR BOWL,  
Dublin 1787, mark of Joseph Jackson, the reeded circular rim, above plain body, engraved with letter "P", raised on three shell capped hocked hoof feet (c.6.5ozs). 14cm diameter, 8cm high

€1000 - 1500



- 33 AN IRISH GEORGE III SWING-HANDLED SILVER SUGAR BOWL,  
Dublin 1802, no makers mark, the reeded swing handle unmarked, applied to a shaped oval body with conical fluting, decorated with a band of continuous bright cut engraved foliage within a wriggle-work border, above crested reserve, raised on an oval spreading pedestal foot, of conforming shape and decoration (c.9.5ozs). 14.5cm high, 17.5cm wide, 12cm deep

€1000 - 1500

- 34 A RARE AMERICAN SILVER HELMET SHAPED SUGAR BOWL AND CREAM JUG, makers mark only, that of Hugh Wishart (fl. 1793-1824) of New York, with applied oval reeded rims, above bright cut engraved ribbon swags, foliate festoons, and shield shaped cartouches, initialled to one side, raised on oval spreading pedestal feet with reeded edges (c.9.5ozs). 19.5cm wide, 11cm deep, 12.5cm high (2)

€3000 - 4000



- 35 A MATCHED PAIR OF IRISH GEORGE II SILVER SALTS, Dublin c.1740, one with mark of Samuel Walker (fl.1731-69), each with applied circular rims, plain bodies and raised on three lion mask paw feet ((c.5.5ozs). c.8cm diameter each, 4cm high

This style of salt cellar with lion mask feet came in about 1738 and remained popular until about 1770

€800 - 1000





Lot 36

- 36 TWO SETS OF SIX IRISH GEORGE III PLAIN POINT HANDLED SILVER TABLESPOONS, Dublin 1800, mark of John Kearns; and Dublin 1801, mark of Michael Keating (c.24ozs)

*Provenance: Deepwell, Blackrock, Co. Dublin*

€700 - 900



Lot 37

- 37 A MATCHED SET OF TWELVE IRISH POINT HANDLED SILVER TABLESPOONS, Dublin marks, various dates, of plain decoration (c.19ozs)

*Provenance: Deepwell, Blackrock, Co. Dublin*

€600 - 1000

- 38 A MATCHED SET OF ELEVEN POINT HANDLED SILVER DESSERT SPOONS, Dublin 1787, most with mark of Michael Keating, with plain tapering handles (c.9ozs)

*Provenance: Deepwell, Blackrock, Co. Dublin*

€600 - 1000



Lot 38

- 39 A MATCHED SET OF TWELVE IRISH GEORGE III OLD ENGLISH PATTERN SILVER DESSERT SPOONS, Dublin c.1800's, four with mark of Samuel Neville, plain decoration (c.11ozs)

*Provenance: Deepwell, Blackrock, Co. Dublin*

€400 - 600

- 40 A SET OF ELEVEN IRISH GEORGE III PLAIN POINT HANDLED SILVER DESSERT SPOONS, Dublin 1801, mark of William Ward; and another similar Dublin 1803, mark of "J.S", each with crested handle terminals (c.9.5ozs) (12)

*Provenance: Deepwell, Blackrock, Co. Dublin*

€400 - 600



Lot 39

- 41 A SET OF SIX IRISH GEORGE III PLAIN POINT HANDLED SILVER TEASPOONS, Dublin c.1785, mark of John Pittar (1775-1825); together with a set of six Celtic point handled silver teaspoons, Dublin c.1790, mark of Richard Williams (marks rubbed) (c.7ozs in all)

*Provenance: Deepwell, Blackrock, Co. Dublin*

€150 - 250



Lot 40



Lot 41

- 42 A SET OF TWELVE OLD ENGLISH PATTERN SILVER TABLE FORKS,  
Dublin 1798, mark of Joshua Buckton, plain decoration,  
handle terminals crested (c.27ozs)

*Provenance: Deepwell, Blackrock, Co. Dublin*

€800 - 1200



- 43 A MATCHED SET OF TWELVE PLAIN POINT HANDLED TABLE FORKS,  
Dublin c.1800 (mixed dates) (c.20.5ozs)

*Provenance: Deepwell, Blackrock, Co. Dublin*

€500 - 800



- 44 A MATCHED SET OF TWELVE IRISH GEORGIAN POINT HANDLED SILVER DESSERT FORKS,  
Dublin 1810/ 1834, various makers marks, plain tapering  
handles (c.11.5ozs)

*Provenance: Deepwell, Blackrock, Co. Dublin*

€400 - 600





Lot 45



Lot 46



Lot 47



Lot 49



Lot 50

- 45 A SET OF SIX IRISH GEORGE III HANOVERIAN PATTERN SILVER TABLE FORKS, Dublin 1801, mark of James Keating, crested to the reverse of the handle terminals (c.11ozs)

*Provenance: Deepwell, Blackrock, Co. Dublin*

€300 - 500

- 46 A SET OF SIX IRISH GEORGE III POINT HANDED SILVER DESSERT FORKS, Dublin 1784, mark of John Pittar, the plain tapering handle terminals with boar crest (c.10.5ozs)

*Provenance: Deepwell, Blackrock, Co. Dublin*

€250 - 450

- 47 A SET OF SIX IRISH GEORGE III HANOVERIAN PATTERN SILVER SLENDER TABLE FORKS, Dublin 1786, mark of Jonas (John) Osborne (1784-1809), the plain tapering handles crested with crown and initialled to the reverse (c.11.5ozs)

€200 - 400

- 48 A MATCHED SET OF TWELVE IRISH GEORGIAN PLAIN HANOVERIAN PATTERN SILVER TABLE FORKS, Dublin c.1800 (mixed dates) (c.25ozs)

*Provenance: Deepwell, Blackrock, Co. Dublin*

€500 - 800

- 49 A GEORGE III SILVER MARROW SCOOP, London 1817, mark of R. Cruikshank, crested to the reverse. 22.5cm long

*Provenance: Deepwell, Blackrock, Co. Dublin*

€150 - 180

- 50 A PAIR OF BRIGHT CUT ENGRAVED SILVER SALAD SERVING SPOONS, Sheffield 1912, the taper handles decorated with vacant shield cartouches; together with a matched pair of silver Hanoverian pattern fish servers, Sheffield 1945 & 1963, mark of E. Viners (c.12.5ozs in all) (4)

*Provenance: Deepwell, Blackrock, Co. Dublin*

€150 - 250

- 51 A PAIR OF GEORGE III SILVER BEAKERS,  
London 1775, makers mark "WT", of tapering circular  
form, each with plain moulded rim and foot, each en-  
graved with coat of arms with motto "PERSEVERO"  
(c.8ozs). 11cm tall, 7.7cm diameter

*Provenance: Deepwell, Blackrock, Co. Dublin*

€800 - 1000



- 52 AN IRISH GEORGE II SHAPED RECTANGULAR  
OUTLINE SILVER SNUFFER TRAY,  
Dublin c.1746, makers mark unidentifiable, of shaped  
rectangular outline, the lugged corners with reeded rims  
enclosing scrolling scallop shells decorated centre, with  
central 'c' handle terminating with a human head thumb-  
piece, raised on four bun feet, crested (c.7.5ozs). 17.7cm

*Provenance: Deepwell, Blackrock, Co. Dublin*

€1000 - 1500



- 53 A CONTINENTAL WHITE METAL  
TWIN-HANDLED PEDESTAL BOWL,  
c.1830, of lobed form, the handle terminals with canine  
heads and raised on lobed circular base (c.6.5ozs). 21cm  
wide over handles

*Provenance: Deepwell, Blackrock, Co. Dublin*

€100 - 200



- 54 A RECTANGULAR SILVER TRINKET  
BOX,  
by Tiffany & Co., marked "STERLING", of shaped outline,  
the body with bark-like texture in relief, chased (c.10.5ozs).  
10cm wide, 7cm deep, 4cm high

*Provenance: Deepwell, Blackrock, Co. Dublin*

€800 - 1200





- 55 A GEORGE III SILVER TANKARD OF BALUSTER FORM,  
London 1748, with scroll handle later chased with birds,  
urns, flowers and foliage

€200 - 400



- 56 A SMALL GEORGE III SILVER BRIGHT CUT  
CREAM JUG,  
1797; and a George III baluster cream jug (2)

€150 - 200



- 57 A GEORGE III SILVER MARROW SCOOP,  
London 1804, mark of Edward Leed

€50 - 70



- 58 A GEORGE II SILVER MEAT SKEWER,  
London c. 1740, mark of Thomas Whipman

€100 - 200



59 A LARGE IRISH GEORGE II BRANDY SAUCEPAN,  
Dublin c1750, mark of Robert Calderwood, the plain bulbous body with slight outturned rim  
and lip, applied socketed turned timber side handle (c.22ozs incl. handle). 35.5cm wide over  
handle, 9.5cm high (excluding handle)

€3000 - 5000



Lot 60

- 60 A MODERN IRISH CIRCULAR SUGAR BOWL in Georgian rococo taste, Dublin 1988, mark of Royal Irish Ltd., with repoussé chased and engraved decoration raised on foliate cast feet (c.7.5ozs). 12.5cm diameter, 5.5high

€250 - 350

- 61 A MATCHED PAIR OF GEORGE III BALUSTER SILVER SUGAR CASTERS, London 1790, with spreading feet (c.5.5ozs)

€200 - 300

- 62 A LONG RECTANGULAR CIGARETTE BOX, Birmingham 1955, with engine turned lid and having Celtic style banding and feet. 18cm wide, 9cm deep, 5.5cm high

€80 - 120

- 63 A PAIR OF SHAPED RECTANGULAR BON BON DISHES, London 1895, with cast and pierced border (c.5ozs). 14cm wide

€150 - 200

- 64 A MODERN IRISH COMMEMORATIVE CIRCULAR DISH, Dublin 1973, mark of Royal Irish Ltd., the reserve engraved with St. Patrick's Cathedral, Dublin (c.10.5ozs). 23cm diameter

€60 - 100

- 65 A GEORGE III PLAIN TAPER HANDLE SAUCE LADLE, London 1782, crested and initialled; and another almost identical example (2)

€120 - 180



Lot 61



Lot 62



Lot 63



Lot 64

66 AN IRISH GEORGE III OVAL SILVER SAUCE BOAT,

Dublin c.1770, with wavy rim, 's' scroll handle, raised on three lion mask capped, paw feet; and another Georgian style sauce boat (2)

€250 - 350



67 A GEORGE III PLAIN SILVER CHAMBER CANDLESTICK,

London 1800, mark of "WS", with reeded rim and having conical extinguisher (c.10ozs)

€250 - 350





- 70 A SET OF TWELVE KINGS PATTERN SILVER DESSERT SPOONS,  
Sheffield 1951, mark of Viner's Ltd (Emile Viner)  
(c.24.5ozs)

€250 - 450



- 71 A SET OF ELEVEN KING'S PATTERN SILVER TABLE FORKS,  
Sheffield 1955, mark of Viner's Ltd (Emile Viner)  
(c.34.5ozs)

€350 - 550



- 72 A SET OF SEVEN KING'S PATTERN SILVER TABLE SPOONS,  
Sheffield 1955, mark of Viner's Ltd (Emile Viner) (c.25ozs)

€300 - 500



- 73 A PAIR OF LATE VICTORIAN SILVER APOSTLE SPOONS,  
London 1900, mark of Daniel and John Wellby, rat tailed  
with tapering handles and cast apostle figures

€100 - 200

Lot 73



- 74 A SET OF SIX GEORGE III IRISH TAPER HANDLE BRIGHT CUT SILVER DESSERT SPOONS,  
Dublin 1761, John Shields

€100 - 200

Lot 74

- 75 A SET OF TWELVE GEORGE III IRISH TAPER HANDLE SILVER TABLE SPOONS,  
Dublin 1791, John Power, engraved with a phoenix crest

€300 - 400

- 76 A GEORGE IV SILVER CIRCULAR WAITER,  
by Richard Rug, London 1758, the single Proustt shell rim  
with engraved reserve, raised on hoof feet. 18cm diameter

€300 - 500



- 77 A GEORGE III IRISH PROVINCIAL  
OVAL HELMET SHAPED SUGAR BOWL,  
Cork, stamped "STERLING" crowned, probably with  
mark of John Warner (1775-1810), with central swing han-  
dle, the lobed body with reeded rims, later chased with  
floral sprays and raised on an oval spreading foot (8.5ozs).  
16.5cm wide, 14.5cm high

€400 - 600





- 78 A SET OF SIX GEORGE II FIDDLE AND SHELL PATTERN DESSERT FORKS,  
London 1740

€150 - 200

- 79 A SET OF SIX GEORGE III TAPER HANDLE TABLESPOONS,  
London 1796, mark of George Smith II

€150 - 200



- 80 A GEORGE III IRISH SILVER TAPER HANDLE TABLESPOON,  
Dublin 1791, John Power; and another bright cut spoon (2)

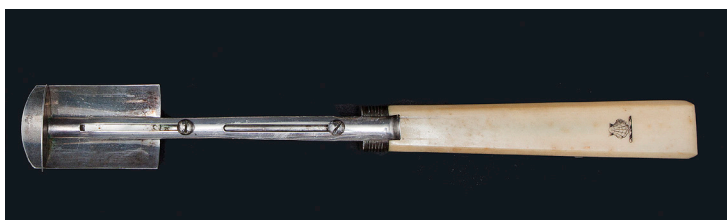
€50 - 80



- 81 A PAIR OF VICTORIAN IVORY HANDLE SALAD SERVERS

by Mappin and Webb;  
together with a pair of ceramic  
salad servers and fish servers

€50 - 100



- 82 A GEORGE III IVORY HANDLE STILTON SCOOP,  
Birmingham marks

€50 - 100



- 83 A CASED PAIR OF VICTORIAN SILVER FISH SERVERS,

Sheffield 1868, the silver blades engraved and chased with foliate scrollwork enclosing a scene of diving salmon in pond setting, with associated silver bead pattern handles, also Sheffield, contained within the original Mappin Brothers of 22 Regent Street case

€100 - 200



- 84 AN IRISH GEORGE I PLAIN HEMISPHERICAL  
SILVER FOOTED BOWL,  
Dublin 1719, mark of Henry Daniell, with applied band to the rim, plain  
body, raised on a spreading circular foot (c.23ozs). 18.5cm diameter,  
14cm high

€5000 - 8000



- 86 A GEORGE IV SEVEN BAR SILVER TOAST RACK,  
London marks, with raised loop handle and inverted heart shaped division, on a shell and reed frame, short scroll feet. 15.5cm wide

€200 - 300



- 87 A SMALL VICTORIAN CIRCULAR SILVER TAZZA ON TRIFORM SUPPORTS,  
London 1869;  
a two-handled cup; a circular bon-bon dish; and a long oval ink stand with beaded rim, London marks (4)

€200 - 300



- 88 A SMALL SILVER HIP FLASK WITH HINGED LID,  
inscribed F. from Geo, and another hip flask, Chester marks

€50 - 100



- 89 A SMALL OVAL GEORGE III SILVER SNUFF BOX,  
Birmingham 1798; and a miniature two-handled pail

€50 - 100

- 90 A SMALL VICTORIAN SILVER TAPER LAMP, in the form of an Eastern oil lamp, Birmingham 1886, Stokes and Ireland; and a taper lamp in the form of a canoe, Chester 1900 (2)

€100 - 200



- 91 A GEORGE IV SILVER OVAL SHAPED OVER-COAT FLASK, London 1828, with detachable cup, plain with the engraved initials A.M.

€100 - 150

- 92 A GEORGE III SILVER HELMET SHAPED SWING HANDLE SUGAR BOWL, Dublin 1797, makers mark rubbed, possibly Samuel Neville, with bright cup engraved banding leaf swings and oval cartouches (damaged)

€200 - 300



- 93 A GEORGE III SCOTTISH SILVER TWO HANDLE CUP, of baluster form with repoussé and chased wyvern fluting scroll handles and raised on a circular rimmed foot, Edinburgh 1812, inscribed to Samuel Gordon MD, from William Stokes 1878

€200 - 400





Lot 100

- 94 A FIDDLE AND THREAD PATTERN FORK AND SPOON, possibly French; together with two white metal spoons (4)

€100 - 200

- 95 A MISCELLANEOUS COLLECTION OF SILVER ITEMS comprising a miniature jug; an engine turned rectangular cigarette case; a square ashtray; a Georgian ladle with gilt bowl, London marks; and a silver plated toast rack

€200 - 400

- 96 TWO SILVER RECTANGULAR VINAIGRETTES, one Georgian and the other Victorian, London marks, each with engine turned to the top and the underside, foliate rims and reeded sides, gilded interiors (c.1.75ozs) (2)

€200 - 300

- 97 A GEORGE V SILVER AND YELLOW METAL CARD CASE, Birmingham 1922, with machine turned decoration and gilded interior, bearing control marks. 10 x 8cm

€100 - 200

- 100 A GEORGE III SILVER OVAL TEAPOT, London 1777, mark of John Toulrier, the domed hinged lid with carved ebonised finial above a plain body with banded decoration having a carved wood handle

€300 - 500



Lot 101

- 101 A GEORGE III IRISH SILVER OVAL TEA POT with bright cut decoration, Dublin c.1770 (no date letter), mark of Richard Williams Dorin, having flat hinged lid and wooden finial with carved wooden handle

€300 - 500



Lot 102

- 102 A SHAPED SILVER SERVING DISH, Sheffield, mark of Viner's Ltd (Emile Viner), with pierced stylised scrolling foliate sides and plain central reserve, raised on an oval foot (c.16.5ozs). 21cm deep, 29.5cm wide

€300 - 500

103

AN IRISH GEORGE III NEOCLASSICAL SILVER  
SWING-HANDLED SUGAR BASKET,

Dublin 1785, mark of William Bond, with beaded handle and rims, the conical shaped body with blue glass liner, decorated overall with bright cut engraved trailing foliate swags and pierced lattice-work and oval reserves, raised on circular spreading foot. 12.5cm high, 11.5cm diameter

€800 - 1200





Lot 104

- 104 AN IRISH SILVER DOUBLE SPIRIT MEASURE, Dublin 1982, mark of Irish Silver Ltd.; together with another similar spirit measure (c.5ozs). The largest 11.5cm high; together with a small silver bottle coaster, London modern, with plain rims and turned timber base. 9.7cm diameter (3)

*Provenance: Deepwell, Blackrock, Co. Dublin*

€150 - 350



Lot 105

- 105 A PAIR OF IRISH SILVER CAFÉ AU LAIT POTS Dublin 1913, mark of Sharmin D.Neill of Belfast, with Celtic banded decoration and having lateral timber handles, raised on flared rim feet (c.19ozs all in). 18cm high

*Provenance: Deepwell, Blackrock, Co. Dublin*

€800 - 1000



Lot 106

- 106 AN IRISH SILVER DEEP STRAWBERRY BOWL, Dublin 1973, mark of Royal Irish Ltd., and with commemorative torc, with nine panel raised sides and raised dished central reserve (c.17ozs). 20.3cm diameter

*Provenance: Deepwell, Blackrock, Co. Dublin*

€800 - 1000



Lot 107

- 107 A CARTIER SILVER MOUNTED PAPERWEIGHT MAGNIFYING GLASS, by Cartier 1990, made in Spain, of circular form, the moulded sides with three inset stones. 9cm diameter

*Provenance: Deepwell, Blackrock, Co. Dublin*

€100 - 200

- 108 A PAIR OF SILVER SAUCE BOATS, Sheffield 1934, mark of E. Viners, import marks, of plain oval form with wavy rims and raised on pad feet (c.6.5ozs). 15.5cm wide over handle and spout (2)

*Provenance: Deepwell, Blackrock, Co. Dublin*

€150 - 180



Lot 108

- 109 A SILVER MOUNTED DRESSING TABLE SET matched, c.1880's, comprising a silver mounted glass perfume bottle; a silver mounted rectangular cut glass box; a squashed melon form silver box; a shoe horn; and a bone and silver handled paper knife (5)

*Provenance: Deepwell, Blackrock, Co. Dublin*

€100 - 150



Lot 109

- 110 A PAIR OF MODERN SILVER CIRCULAR PIERCED DECANTER COASTERS, Birmingham 1981, .925, with plain rims and moulded base, continuous pierced decoration and vacant oval reserves, and inset turned timber bases. 13cm diameter

*Provenance: Deepwell, Blackrock, Co. Dublin*

€400 - 600



Lot 110

- 111 A COLLECTION OF FIVE VARIOUS RECTANGULAR SILVER PHOTOGRAPH FRAMES, in sizes, some with reeded rims and moulded sides (5)

*Provenance: Deepwell, Blackrock, Co. Dublin*

€300 - 500



Lot 112

- 112 A VICTORIAN SILVER AND GREEN ENAMELLED PANELLED TRAVEL CLOCK, London 1894, with surmounted swing handle, the French movement with white enamel dial with Roman numerals, and raised on bun feet, marked "PERCY EDWARDS & CO., 71 PICCADILLY W". 8cm high, 5.5cm wide

*Provenance: Deepwell, Blackrock, Co. Dublin*

€400 - 600

- 113 A CASED SET OF FOUR SILVER CIRCULAR SALTS, Sheffield 1896, mark of J.D & Sons, with gadrooned rims, scroll and foliate decorated bodies, on female mask capped legs and shell feet. 6.5cms diameter; together with four matching Sheffield salt spoons

€150 - 250



Lot 113



Lot 115

- 114 THREE PLAIN RECTANGULAR SILVER PHOTOGRAPH FRAMES, in graduated sizes, the largest 29cm high, 23.5cm wide (3)

*Provenance: Deepwell, Blackrock, Co. Dublin*

€200 - 300

- 115 A GROUP OF MISCELLANEOUS SILVER ITEMS, comprising of an Edwardian silver photograph frame, Birmingham marks; a silver ring-handled magnifying glass; a silver and mother of pearl handle penknife; and a decanter label (4)

€100 - 200



Lot 116

- 116 A COLLECTION OF FOUR SILVER VINAIGRETTES, Birmingham etc

€200 - 300



Lot 118

- 117 A VICTORIAN STATIONARY BOX, the hinged lid decorated with applied silver scroll work, Birmingham marks. 29cm wide

€50 - 100

- 118 A CASED FOUR PIECE SILVER CHRISTENING SET, Sheffield and London marks, comprising a spoon, knife, fork and napkin ring, each chased and engraved with scrollwork medallions (4)

€200 - 400



Lot 119

- 119 A SET OF ELEVEN VICTORIAN SILVER COFFEE SPOONS,

London 1875, mark of Martin, Hall & Co (Richard Martin & Ebenezer Hall); and two similar examples by the same maker, each with taper handles decorated with bellflowers and blind fretwork, in relief, the handle terminals crested (13)

€100 - 200

- 120 AN OVAL SILVER TEAPOT,  
London 1904, mark of West & Son, with applied ebonised finial and 'c' scroll handle, domed hinged cover, with shaped out-turned rim, inverted slender neck, the down-swept body decorated with embossed stylised flutes in low relief, crested with perched bird of prey, raised on an oval foot (c.18ozs all in). 12cm high, 27cm wide over handle and spout

€250 - 450

- 121 A PAIR OF VICTORIAN SMALL CIRCULAR TAPERING SILVER BOWLS,  
London 1899, with reeded rims and pierced bodies (c.4.5ozs). 8cm diameter, 5cm high

€120 - 180

- 122 A SQUARE CELTIC PATTERN ASHTRAY,  
Dublin 1973;  
a plain circular ashtray, Dublin 1973;  
and another small ashtray (3) (c.7ozs in all)

€100 - 150

- 123 A COLLECTION OF SILVER BIJOUTERIE,  
including a vesta case; a snuff box; an oval pin box; a miniature table and two chairs two decanter labels; napkin ring; four replica trophy cups (c.16ozs in all)

€250 - 350

- 124 A MISCELLANEOUS COLLECTION OF ITEMS  
including a Chinese pepper pot; spirit measure; hand bell; inkwell; cream jug; a pair of salt spoons; and three silver crowns (10)

€250 - 350



Lot 124



Lot 123



125 AN IRISH SILVER STRAWBERRY DISH  
 Dublin 1973, mark of Royal Irish Ltd., with twenty raised panel sides, enclosing plain central reserve (c.12ozs). 20cm diameter

*Provenance: Deepwell, Blackrock, Co. Dublin*

€600 - 800



126 A SET OF SIX IRISH GEORGE III SILVER POINT HANDLED TABLESPOONS,  
 Dublin 1800, mark of Samuel Neville, plain decoration, handle terminals crested (c.12ozs). 24cm long

*Provenance: Deepwell, Blackrock, Co. Dublin*

The Dublin silversmith Samuel Neville specialised in flatware. He was based in various locations throughout his career, 9 Hoeyes Court 1769-1803; 30 Great Ship Street 1806; Freeman 1795; registered 1796; elected Warden 1804-7; elected Common Council City of Dublin 187; Master 1807-8, 1827-8; died 1851

€500 - 700



127 AN IRISH PROVINCIAL GEORGE III SILVER OLD ENGLISH PATTERN PICKLE FORK,  
 Cork, mark of Joseph Gibson (1784-1820), marked "STERLING", the tapering handle terminating with a crest and five prongs (circa 2ozs). 25cm long

*Provenance: Deepwell, Blackrock, Co. Dublin*

€100 - 150



128 A SET OF FIVE GEORGIAN POINT HANDLED SILVER TABLE FORKS,  
 Dublin c.1800, mark of Samuel Neville, the plain tapering handles with a bird crest (c.100zs)

*Provenance: Deepwell, Blackrock, Co. Dublin*

€200 - 400



129 A SET OF TWELVE IRISH GEORGE III BONE HANDLE KNIVES WITH SILVER BLADES,  
 Dublin 1801, mark of Samuel Neville, the blades crested

*Provenance: Deepwell, Blackrock, Co. Dublin*

€400 - 500

130 A SILVER OVAL SAUCE BOAT,  
 Birmingham c.1910 (marks rubbed), with waved gadrooned rims, applied leaf wrapped 's' scroll handle, plain body, raised on an oval spreading pedestal foot, with gadrooned rim(c.5ozs). 15cm wide over handle, 10.5cm high

*Provenance: Deepwell, Blackrock, Co. Dublin*

€150 - 180

A SET OF FOUR IRISH GEORGE III SILVER COLUMN CANDLESTICKS, Dublin 1782, no makers mark, the shaped square sconces (each with conforming markings) with reeded rims and inverted sides, above ionic column bases, the circular tapered shafts decorated with continuous bright cut engraved trails of bellflowers, raised on stepped square bases decorated with bright cut banding (weighted). 27cm high

€8000 - 10000





- 134 A VICTORIAN SILVER COBURG PATTERN STILTON SCOOP,  
London 1865, mark of G. Adams, the cast handle with crested goat terminal (c.3.5ozs). 24cm long

*Provenance: Deepwell, Blackrock, Co. Dublin*

€250 - 350



- 135 A FOUR PIECE SILVER TEA AND COFFEE SET,  
Sheffield 1921 and 1934, mark of T. Bradbury, of octagonal form with low domed lid having timber finials, engraved banding and raised on flat bases (c.52ozs incl. handles etc.)

*Provenance: Deepwell, Blackrock, Co. Dublin*

€700 - 1000

- 136 A PAIR OF SILVER CIRCULAR PEDESTAL BON-BON DISHES,  
Birmingham 1937, each with indented rims. 10cm diameter; together with a small silver pedestal bon-bon bowl with pierced decoration, Sheffield 1915. 10.3cm diameter; and a pierced silver bucket shaped condiment, with blue liner, marked "STERLING". 5.5cm high, 5.5cm diameter (c.6ozs in all) (4)

*Provenance: Deepwell, Blackrock, Co. Dublin*

€150 - 250



- 137 FIVE SILVER ENGINE TURNED OCTAGONAL ASHTRAYS,  
Birmingham 1946 and 1950, 8 x 8cm; together with a silver six-bar toast rack, Sheffield 1951, of plain angular form and generous proportions. 14cm long (c.10.5ozs all in)

*Provenance: Deepwell, Blackrock, Co. Dublin*

€100 - 150



- 138 A PLAIN VICTORIAN RECTANGULAR SILVER STAMP BOX,  
Chester 1897, the hinged lid engraved "stamps" (c.1.5ozs). 7.5cm wide, 3.5cm deep, 2cm high; together with a silver pencil sharpener of plain cylindrical form, 925 standard. 6.2cm high; and an Irish silver table bell, Dublin 1916, mark of Wakelin and Wheeler, of plain circular form with raised Celtic style handle (c.3.5ozs). 9cm high (3)

*Provenance: Deepwell, Blackrock, Co. Dublin*

€200 - 400



- 139 A COLLECTION OF FIVE SMALL SILVER PHOTOGRAPH FRAMES,  
comprising, one oval, one circular and three various sized rectangular frames (5)

*Provenance: Deepwell, Blackrock, Co. Dublin*

€150 - 250



- 140 AN IRISH GEORGE III SILVER TWO-HANDLED OVAL TEA TRAY,  
 Dublin 1795, mark of Thomas Jones, with beaded border, the reverse with bright cut engraved  
 foliate swags and central lozenge, raised on four shell cast feet (c.55ozs). 55cm long over handles

*Provenance: Deepwell, Blackrock, Co. Dublin; Kurt Tischer Collection*

€4000 - 6000



Lot 143

- 141 AN IRISH GEORGE III SILVER BRIGHT CUT ENGRAVED SOUP LADLE, Dublin 1790, mark of Michael Keating, the tapering point handle decorated with bright cut engraving, the handle terminal with shield shaped reserve, crested, with shell shaped bowl. 32cm long

€600 - 800



Lot 144

- 143 A GEORGE III IRISH SILVER ASPARAGUS TONGS, Dublin 1827, mark of Edward Powell and Twycross, fiddle pattern with a pierced blade

€200 - 300

- 144 A MAHOGANY CASED SET OF TWELVE VICTORIAN MOTHER O' PEARL HANDLED AND SILVER BLADE FRUIT KNIVES AND TWELVE MATCHING FORKS, Sheffield 1895, mark of Allen & Darwin

€150 - 250



Lot 145

- 145 A SET OF NINE TAPER HANDLE COFFEE SPOONS, Sheffield 1946; together with eleven various coffee spoons (c.7ozs)

€60 - 100



Lot 146

- 146 A LARGE RECTANGULAR CIGARETTE CASE, Birmingham 1949, with engine turned decoration, gilt interior engraved with presentation inscription (c.8.5ozs)

€120 - 180

- 147 A VICTORIAN SUGAR NIPS, London 1857, with engraved foliate decoration; and two further sugar nips (3) (c.3ozs in all)

€120 - 180



Lot 147

- 148 A FINE PAIR OF GEORGE II PROVINCIAL HANOVERIAN PATTERN SILVER TABLESPOONS, Cork c. 1745, double struck with makers mark of George Hodder (1738-71), and marked "STERLING", plain decoration, with ridged up-turned handles (c.4.5ozs). 21.5cm long

*Provenance: The Dudley Westropp Collection*

€1500 - 2000



Lot 149

- 149 A RARE IRISH QUEEN ANNE TREFID SILVER SPOON WITH RAT-TAIL BOWL, Dublin c.1702, mark of Edward Barrett (c.1oz). 18.5cm long

*Provenance: Dr. Kurt Tischer Collection*

€800 - 1200

- 150 AN IRISH GEORGE III SILVER CRUET STAND,  
Dublin 1795, mark of Christopher Haines, of oval boat  
form, with raised ring handle, the body with pierced and  
bright cut engraved banding, raised on bracket feet,  
fitted with five cut glass oil bottles, three with silver mounts  
(c.16ozs). 28cm high, 19.5cm wide, 13cm deep

*Provenance: Deepwell, Blackrock, Co. Dublin*

€1500 - 2500



- 151 A GEORGE III SILVER ADAM STYLE BUTTER  
DISH AND COVER,  
London 1772, mark of Aldridge Green, of oval tub form,  
with couchant cow finial, decorated overall with pierced  
lattice-work interposed with medallions and draped  
swags, two medallions crested and having blue glass liner  
(c.9.5ozs incl. finial which is apparently unmarked).  
16.5cm wide, 11cm deep, 12cm high

*Provenance: Deepwell, Blackrock, Co. Dublin*

€2500 - 3500



152

A MATCHED CANTEEN OF 19TH CENTURY FIDDLE  
AND THREAD PATTERN SILVER CUTLERY,  
comprising of

A pair of William IV serving spoons London 1831;  
Twelve desert spoons London 1831;  
Twelve large tablespoons London 1831;  
Twelve table forks London 1831;  
Twelve Victorian desert forks, George Adams London 1846;  
Ten teaspoons London 1835 (135ozs in all)

€1500 - 2000

- 153 A SILVER MOUNTED GLASS CLARET JUG,  
Sheffield 1896, mark of James Dixon & Sons Ltd., with hinged lid, applied  
stylised 'c' scroll handle, facet cut body. 23cm high

€300 - 500

- 155 A WILLIAM IV SILVER CASTLE-TOP PILL BOX,  
Birmingham 1836, mark of Nathaniel Mills, the hinged rectangular  
top in low relief depicting Abbotsford House, moulded  
rims, the back and sides with tartan engine turning and central  
dolphin crest to the reverse.

Home of Sir Walter Scott, Abbotsford House, Melrose, Scotland was  
completed in 1824 after six years of construction. It was opened to the  
public in 1833, following the death of Sir Walter Scott.

These silver topographical silver boxes were made in Birmingham  
and were very fashionable between circa 1830-1860. They  
depicted British landmarks and at the time tended to be purchased  
by tourists as souvenirs.

Nathaniel Mills was the most prolific and best-known of the Birmingham  
boxmakers.

€800-1200





Lot 157



Lot 158

- 157 A PAIR OF SILVER PLATED CANDLESTICKS of Corinthian column form, converted to electricity. 26cm high each (2)

€200 - 400

- 158 A SHEFFIELD PLATED DISH RING, c.1890, of circular waisted form with repoussé chased engraved and pierced figural, floral and bird decoration. 21cm diameter; together with an electroplated circular claret jug, with frosted glass body, the hinged lid with foliate finial. 24cm high (2)

*Provenance: Deepwell, Blackrock, Co. Dublin*

€400 - 500



Lot 159

- 159 A PAIR OF SILVER PLATED CORINTHIAN COLUMN LAMPS, c.1900, electrified

*Provenance: Deepwell, Blackrock, Co. Dublin*

€600 - 800

- 160 A PAIR OF WHITE METAL HORNED OWL PEPPER POTS, probably Spanish, with coloured bead eyes and naturalistic feathered bodies, perched on branches, marked to the bottom of the feathers with a pentagram mark and another mark, unidentified. 8.2cm high

*Provenance: Deepwell, Blackrock, Co. Dublin*

€200 - 400



Lot 160

- 162 A GEORGE III OLD SHEFFIELD PLATED COFFEE POT of baluster form, with domed cover and acorn finial above a crested body with alternating spiral flutes and spreading circular foot. 28cm high

€100 - 200

A PAIR OF SILVER PLATED TABLE OIL LAMPS  
by Tiffany & Co., with cut glass reservoirs, on Corinthian  
columns stems and square bases with beaded banding.  
17cm high (excluding clear glass shades)

*Provenance: Deepwell, Blackrock, Co. Dublin*

€1500 - 2000





164 A PAIR OF WORN SILVER PLATED COPPER  
THREE BRANCH CANDELABRA

*Provenance: Deepwell, Blackrock, Co. Dublin*

€80 - 120



165 A LARGE SILVER PLATED CORINTHIAN  
COLUMN TABLE LAMP.  
38cm high, electrified

*Provenance: Deepwell, Blackrock, Co. Dublin*

€600 - 800

- 171 A DIAMOND SINGLE-STONE RING,  
the round brilliant-cut diamond within an eight-claw setting, to an 18 carat gold hoop, diamond approx. 0.50 carat total. Ring size M/N

€700 - 1000



Lot 171

- 172 A DIAMOND AND SILVER BROOCH,  
of squared scrolled design, set throughout with rose and old brilliant-cut diamonds, set in sleeve, length approx. 4cm, together with a miscellaneous collection of 9 carat gold & yellow metal jewellery, total weight approx. 50grams

€300 - 600



Lot 172

- 173 A LARGE MISCELLANEOUS COLLECTION OF NECKLACES,  
comprising of two coral necklaces, faceted jet beads, malachite beads and assorted coloured costume necklaces etc.

€100 - 200



Lot 173

- 174 A LARGE COLLECTION OF JEWELLERY,  
comprising of miscellaneous costume beaded necklaces, paste brooches etc

€100 - 200



Lot 174

- 175 A COLLECTION OF NECKLACES,  
comprising of a green bead necklace, a pink dyed quartz and elephant hair beaded necklace etc

€100 - 200

- 176 A LARGE COLLECTION OF FAUX PEARL NECKLACES  
etc, various lengths

€20 - 40



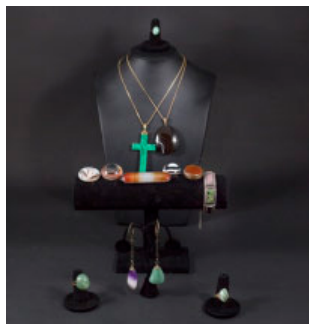
Lot 176



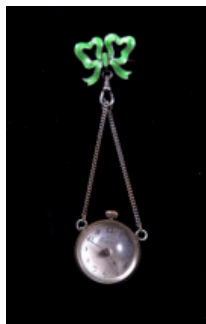
Lot 175



Lot 177



Lot 178



Lot 179



Lot 180



Lot 181



Lot 182

177 A LARGE COLLECTION OF COSTUME BROOCHES

€50 - 100

178 A LARGE COLLECTION OF HARDSTONE JEWELLERY, comprising of a malachite cross pendant, an oval agate pendant etc, together with garnet rough crystals and cabochon agates

€80 - 150

179 18 CARAT GOLD JAEGER-LE-COULTRE LADY'S WRISTWATCH, circa 1964, cased, length approx. 20cm, together with a gent's 1920's wristwatch and an 18 carat gold half hunter pocket watch, approx. length 4.5cm, etc

€200 - 400

180 A COLLECTION OF JEWELLERY, comprising of a pair of Georgian paste-set rings, hardstone bracelet, green hardstone pendant, carved coral plaque of a lineal silhouette

€80 - 150

181 A PAIR OF 9 CARAT GOLD OVAL ENGRAVED GENTLEMAN'S CUFFLINK'S, together with a collection of gilt metal jewellery

€50 - 100

182 A COLLECTION OF VICTORIAN WOVEN HAIR MOURNING JEWELLERY, comprising of two bracelets, a pair of ear pendants, etc

€200 - 300

183 A LADY'S LOCKET, oval form with chain; together with a costume jewellery pair of clip-on earrings, pin and other miscellaneous costume jewellery

€20 - 30

- 184 A CHINESE CARVED COIL SPRUNG BRACELET,  
c.1900, articulately modeled in the form of a dragon,  
34cms long; together with a spinach jade style oval pen-  
dant and chain. The stone 6.5cm long

€300 - 500



Lot 184

- 185 A COLLECTION OF JEWELLERY,  
a brooch, composed of an old cushion mixed-cut amethyst  
to a chased foliate surround, together with a turquoise and  
seed pearl horseshoe and arrow pin, a 9 carat gold ring,  
etc (5)

€100 - 200



Lot 185

- 186 A PIETRA DURA BRACELET,  
composed of oval plaques with overall pietra dura depic-  
ting flora and foliate designs to gilt metal fancy-links,  
length approx. 20cm

€100 - 200



Lot 186

- 187 A DOUBLE STRAND OF CULTURED PEARLS,  
approx. 9mm each to a rectangular mixed-cut yellow paste  
clasp in a yellow metal surround, length approx. 43cm

€100 - 200



Lot 187

- 188 A LADY'S WRISTWATCH  
by Tissot, the circular silvered dial with baton and Arabic  
numerals to a gilt metal and stainless steel bezel, to a two-  
tones bracelet, inner circumference 19.5cm, presented in  
original case.

€100 - 200

- 189 A SILVER BRACELET,  
composed of braided polished silver links, stamped 925,  
length approx. 21.5cm

€100 - 200



Lot 195



Lot 197



Lot 196

- 195 AFTER ALBRECHT DÜRER (1471-1528)  
St Luke in his Study  
Etching, 25 x 19cm

€200 - 300

- 196 AFTER JAMES ABBOTT MCNEILL WHISTLER  
(1834-1903)  
Billingsgate  
Etching, 15 x 22.25cm  
Signed, dated 1859 within image

Literature: Cover illustration of "The Etched Work of Whistler" by Edward G. Kennedy, reference 47

€1000 - 2000

- 197 JEAN-PIERRE NORBLIN DE LA GOURDAIN  
(1745-1830),  
AFTER REMBRANDT  
The Sermon of Saint John the Baptist (1808)  
Etching and dry point, 50.7 x 64cm

€1000 - 1500

- 198 A. LAZZARI  
Venetian Views  
Coloured engravings, a set of 12, 24 x 28cm each  
(12)

€300 - 400



Lot 198 (1 OF 12)



Lot 198 (1 OF 12)





199 ITALIAN SCHOOL,  
IN THE MANNER OF LEONARDO DA VINCI  
Femme Head Study, slightly inclined  
Red chalk, paper laid on paper, 21 x 15cm  
A Maltese cross watermark is visible

€400 - 600



200 ITALIAN SCHOOL (17TH CENTURY)  
Head Study of a Bearded Man  
Red chalk on laid paper, 27 x 18.5cm  
With heart shaped watermark

€300 - 500



201 ENGLISH SCHOOL (EARLY 19TH CENTURY)  
Head Studies of Men  
Red chalk, a pair, 28 x 20cm; 20 x 15cm  
On Joseph Coles 1812 watermarked paper (2)

€300 - 500



202 ITALIAN SCHOOL  
Madonna & Child, half-length study  
Pen, ink and wash, oval, 20 x 15cm

€150 - 250



203 DUTCH SCHOOL (17TH CENTURY)  
Portrait of a Lady in White Ruff Collar, half-length  
Oil on canvas, lined, 63 x 46cm

€600 - 800



204 ENGLISH SCHOOL (18TH CENTURY)  
Portrait of a Lady  
Oil on canvas, 63 x 54cm

€400 - 600



205 AFTER SIR PETER PAUL RUBENS  
Portrait of a Gentleman  
Oval, oil on board, 20 x 16cm  
In carved giltwood frame and another matching (2)

€350 - 650



206 MANNER OF TENIERS THE YOUNGER (1610-1690)  
View of a town and mountainous landscape with figures in the foreground  
Oil on canvas, 56 x 81cms

€3000 - 5000



- 207 **THOMAS SPINKS**  
Extensive Highland Landscape  
Oil on canvas, 61 x 106cm  
Signed with initials

€400 - 600

- 208 **STUART LLOYD RBA**  
On the Scottish Coast, St. Monans  
Watercolour, 30 x 91.5cm  
Signed and dated 1905

€600 - 800

- 209 **ATTRIBUTED TO AUGUSTUS NICHOLAS  
BURKE RHA (1839-1891)**  
Landscape with Goose Girl  
Oil on canvas, 35.5 x 51cm (14 x 20")

*Provenance: Deepwell, Blackrock, Co. Dublin;  
Purchased from Seán O'Criadain, 1974;*

€400 - 600

- 210 **CONTINENTAL SCHOOL (19TH CENTURY)**  
Hens Gathered by a Coop; Hens by an Overturned Pail  
Oil on board, a pair, 12 x 17cm each  
Each signed indistinctly and dated (2)

€400 - 600





- 211 SAMUEL SPODE (FL.1825-1858)  
Landscape with Grey Hunter and Dog  
Oil on canvas, 50 x 59cm  
Signed

€1500 - 2500

- 212 WILLIAM MAGRATH (1838-1918)  
At the Blacksmiths, The Old Forge, Steyning,  
Sussex  
Watercolour, 26 x 36cm  
Signed

€800 - 1200





Lot 213

- 213 ENGLISH SCHOOL (C.1830)  
Portrait Miniature of a Seated Gentleman Reading  
Oil on ivory panel, 10 x 8cm

€250 - 300



Lot 214

- 214 ATTRIBUTED TO JOHN COMERFORD (1773-1832)  
Portrait Miniature of John Shears  
Oil on ivory, oval, 8.5cm high

€250 - 350

- 215 IRISH SCHOOL, LATE 17TH CENTURY  
Portrait of a Gentleman in Armour,  
Bust Length  
Oil on copper, 6.25 x 5.25cm

And a Late 18th Century miniature on ivory of a gentleman in a red coat

€150 - 250

- 216 ENGLISH SCHOOL (17TH CENTURY)  
Portrait Miniature of a Young Lady, half length  
Oil on panel, 5 x 3.5cm

€100 - 200



Lot 215

- 217 AFTER VAN DYCK  
Portrait of a Gentleman  
Oil on ivory, 6.5cm diameter  
Tondo

€300 - 500



Lot 216



Lot 217

- 218 IN THE MANNER OF THOMAS HICKEY  
(18TH CENTURY)  
Portrait of a Lady in a Blue Dress, half-length  
Oil on panel, oval, 21 x 17cm

€600 - 1000



- 219 ATTRIBUTED TO WILLIAM WOOD  
(EARLY 19TH CENTURY)  
Portrait Miniature of a Military Officer  
Oil on ivory, 10.5 x 8.5cm

€400 - 600



- 220 FRENCH SCHOOL (19TH CENTURY)  
Group Portrait of a Lady and Young Girl  
Enamel on copper panel, 17.5 x 14.5cm  
Contained in a gilt Florentine frame

€500 - 800





Lot 221

- 221 J. WADE  
Portrait of a Gentleman, in profile  
Watercolour 18 x 13cm  
Signed

€100 - 150

- 222 AN OLD MASTER  
Study of a Male Nude  
Pencil, 28 x 24cm; together with a  
pencil drawing of a hermit (2)

€100 - 150



Lot 222

- 223 A SET OF THREE VICTORIAN SILHOUETTE  
PORTRAITS OF A GENTLEMAN AND  
TWO LADIES,  
in traditional black frames (3)

€100 - 150

- 224 ENGLISH SCHOOL (EARLY 19<sup>TH</sup> CENTURY)  
Portrait Miniature of a Gentleman in a Blue Coat with  
Striped Cravat  
Watercolour on ivory, 7.5 x 5.5cm

€200 - 400



Lot 223

- 225 ITALIAN SCHOOL, 19<sup>TH</sup> CENTURY  
Diana and Attendant with Cherub  
Miniature, oil on card, tondo with gilt metal mount

€150 - 200



Lot 224



Lot 225



226 EDWARD ARMFIELD (1817-1896)  
 Terrier with Pups at Bathtime, in an interior  
 Oil on canvas, 40 x 53cm  
 Signed

W.H. Best, carver and gilder, Rochdale framing label verso

Contained in a bird's eye maple frame

€2000 - 3000



227

CHARLES BAPTISTE SCHREIBER

A musical moment  
Oil on panel 31 X 23.5cm  
Signed

*Provenance: Deepwell, Blackrock, Co. Dublin*

€700 - 1000

228

CONTINENTAL SCHOOL (19TH CENTURY)

Figures Carrying Water and a Donkey, resting in a hilly landscape  
Watercolour, 17 x 23cm;  
Together with a hand-coloured print depicting two men and a lady in a landscape, 19.5 x 16.5cm; and a pair of pencil and wash drawings depicting game birds and dogs, 11 x 17cm each (4)

*Provenance: Deepwell, Blackrock, Co. Dublin*

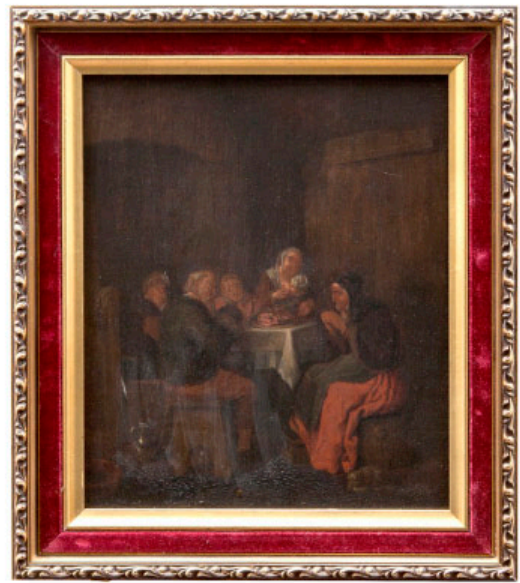
€20 - 40

229

DUTCH SCHOOL (18TH CENTURY)

Family in a Tavern Interior  
Oil on oak panel, 32 x 27cm  
Signed 'L. Molouser'

€200 - 400



Lot 229



230

BENJAMIN EASTLAKE LEADER (D.1916)

Wooded Pastoral Landscape with Sheep  
Oil on board, 31 x 42cm

€200 - 300

- 231 AFTER REMBRANDT VAN RIJN  
(19TH CENTURY)  
The Night Watch  
Oil on canvas, 73.5 x 89cm

€1500 - 2500



- 232 STYLE OF DANIEL MACDONALD  
(1821-1853)  
Drinking Poitín in a Cavernous Hut, mountains in the distance  
Oil on canvas, 36 x 46cm

€3000 - 5000





Lot 233

- 233 SAMUEL FREDERICK BROCAS (1792-1847)  
A View of a Castle by a River with Figures and Boats  
Watercolour, 31 x 46cm  
Signed

€600 - 1000



Lot 234

- 234 SAMUEL FREDERICK BROCAS (1792-1847)  
A View of Fishermen by a River with Distant Cottage and Cart  
Watercolour, 24 x 34cm  
Signed

€300 - 500



Lot 235

- 235 WILLIAM BINGHAM MCGUINNESS RHA  
(1849-1928)  
Unloading Boats in Coastal Town  
Watercolour, 25 x 34cm  
Signed

€200 - 300

- 236 ENGLISH SCHOOL (19TH CENTURY)  
A Courting Couple  
Oil on canvas, 35 x 26cm

€250 - 300

- 237 ENGLISH SCHOOL, LATE 18TH CENTURY  
Portrait of a boy in a blue coat  
Oval, miniature 6 x 4.5 cm

€400 - 600



Lot 236



Lot 237

- 238 WILLIAM SADLER II (1782-1839)  
A View of the Royal Hospital and The Wellington Monument from the Phoenix Park, Dublin  
Oil on panel, 30 x 48cm

€300 - 500



- 239 SCOTTISH SCHOOL, IN THE MANNER OF SHAYER (19TH CENTURY)  
Figures and Houses at Coastal Market  
Oil on canvas, 43 x 60cm

€800 - 1200



- 240 GERMAN SCHOOL (18TH/19TH CENTURY)  
Town and Mountain Landscape with Figures in the Foreground  
Oil on copper panel, 18.5 x 28cm

€200 - 400





Lot 242

- 241 ENGLISH SCHOOL (19TH CENTURY)  
Children by a Coastal Inlet  
Watercolour,

€600 - 800

- 242 FRENCH SCHOOL (19TH CENTURY)  
Figures and Boats on a Beach, Nice  
Oil on panel, 16 x 33cm  
Signed indistinctly. Inscribed verso, 'Plage, Nice 1879'

€250 - 350



Lot 243

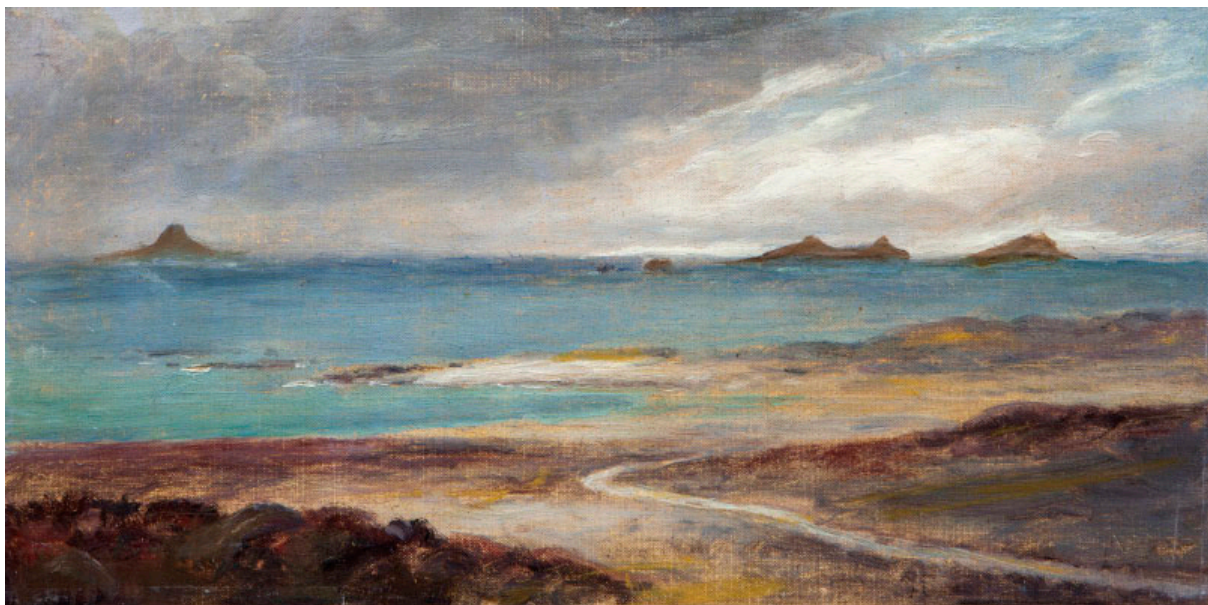
- 243 FRED NAYLOR, IRISH 19<sup>TH</sup> CENTURY  
Portmarnock, Co. Dublin  
Oil on canvas, 18.5 x 25cm  
Inscribed verso and dated 1888

€200 - 300

- 244 IRISH SCHOOL, 20TH CENTURY  
Claddagh, Co. Galway  
Watercolour, 11 x 26cm

together with five unframed Irish watercolours (6)

€300 - 400



Lot 244



Lot 245

- 245 VENETIAN SCHOOL (19TH CENTURY)  
 Figures beside a Villa on a Quayside; Figures and a Gondola, Venice in the background  
 Oil on canvas, a pair, 25.25 x 45cm each  
 Signed indistinctly  
 (2)

€600 - 800

- 246 WILLIAM HIRD  
 Still Life with Plums, Hazelnuts and Beetle in a Naturalistic Setting  
 Oil on canvas, 20 x 26.5cm  
 Signed

€600 - 1000



Lot 246

- 247 E. AMRS  
 A Busy Continental Port with Figures  
 Oil on canvas, 25 x 34.5cm  
 Signed indistinctly

€600 - 800



Lot 247

- 248 E. HAYES (19TH CENTURY)  
 Shipping by a Harbour Wall  
 Oil on panel, 16.5 x 21.5cm  
 Signed, inscribed 'by Edwin Hayes on the lid of his old sketch box 1879'. Inscribed verso 'sketched by Edwin Hayes RHA on the lid of his old sketch box. Given to Basil Wood Walker at Briscood House, Steele's Road, Hempstead 1879'

€300 - 400



Lot 248



249 WILLIAM CASTLE - KEITH  
(AMERICAN 1864 - 1927)  
Unloading a Barque on a Beach  
Oil on canvas, 76 x 50cm  
Signed

€1000 - 1500

250 JOHN HENRY ALLERSTON  
Robin Hoods Bay Looking North  
Oil on canvas, 29.5 x 60cm  
Signed

€1000 - 1500





251 PIERRE CELLESTIS-BILLET (1837-1922)  
 Two Girls on a Quayside  
 Oil on canvas, 46 x 34.4cm  
 Signed and dated 1904

*Provenance: Deepwell, Blackrock, Co. Dublin*

Exhibited: Hennessy, O'Kelly and O'Conor in France, Milmo-Penny Fine Art, December 2006, where purchased

€1200 - 1600



Lot 252

252 HENRY TRESHAM RA (1751-1814)

An Apotheosis

Watercolour and pencil, 10.5 x 7.5cm

Inscribed paper label verso

*Provenance: The Loquens Gallery, Stratford-upon-Avon (label verso)*

€50 - 100



Lot 253

253 IN THE STYLE OF WALMSLEY

Cattle Watering in a Clearing

Gouache, 15 x 21cm

€200 - 300

254 ITALIAN SCHOOL (18TH CENTURY)

Putti Dancing to the Pipes of Pan, in an Italianate Garden Landscape

Watercolour heightened with white, 15.5 x 20.5cm

Signed indistinctly

€100 - 150



Lot 254

255 JOHN HENRY CAMPBELL (1757-1829)

Figures on a Pathway, through a Wooded Rocky Landscape

Watercolour, 14.5 x 20.5cm

€300 - 500

256 CONTINENTAL SCHOOL

Seated Figure and Two Carriage Horses

Chalk and charcoal, 26 x 37.8cm

Signed indistinctly and dated 1856. Inscribed verso

€100 - 200



Lot 255



Lot 256



Lot 257

- 257 AFTER JAMES MALTON  
Lying in Hospital, Dublin  
Coloured aquatint, 33 x 46cm;  
together with another after Brocas (2)

€400 - 600

- 258 ITALIAN SCHOOL (19TH CENTURY)  
Figures by a Harbour  
Watercolour, 24 x 35cm  
Signed indistinctly

€250 - 400

- 259 VICTORIAN SCHOOL (19TH CENTURY)  
Portrait of a Young Gentleman  
Oil on panel, 23 x 19.5cm

€150 - 250

- 260 JOHN COTHER WEBB (1855-1927)  
A Pastoral Scene with Soldier, Women and Children  
Coloured mezzotint, 55 x 64cm

€150 - 250



Lot 258



Lot 260



Lot 259



Lot 261

- 261 ALEXANDER WILLIAMS RHA (1846-1930)  
View by a Lake in Killarney; Lakeside with Distant Mountain  
Oil on board, a set of two, 37 x 19.5cm; 11 x 29cm respectively  
Each signed  
(2)

€250 - 350

- 262 A COLLECTION OF SIX MID-19TH CENTURY SEPIA WATERCOLOURS,  
views in Ireland, 24 x 35cm etc (6)

€200 - 300

- 263 FRANK EGGINTON RCA FIAC (1906-1995)  
Mountain Landscape  
Watercolour, 37 x 53cm  
Signed

€700 - 1000

- 264 WILLIAM BINGHAM MCGUINNESS RHA  
(1849-1928)  
Cattle in a River Landscape  
Watercolour, 34.5 x 52.25cm  
Signed

€200 - 300

- 265 KENNETH STEEL (1906-1970)  
Dawson Lane, Dublin  
Pencil, 31 x 19cm  
Signed, inscribed with title in the margin

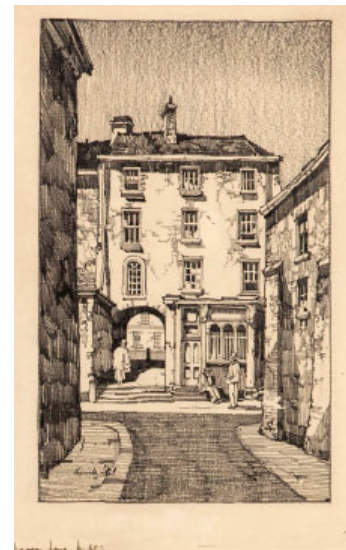
€100 - 150



Lot 262



Lot 263



Lot 265

- 266 MYRA KATHLEEN HUGHES (c.1885-1918)  
Leinster Market  
Etching, 19.75 x 16.25cm  
Signed, dated 1909, inscribed with title within image

€100 - 150

- 267 DOUGLAS ALEXANDER RHA (1871-1945)  
Lake and Mountain Landscape  
Watercolour, 24 x 36cm  
Signed

€150 - 250



Lot 266

- 268 DOUGLAS ALEXANDER RHA (1871-1945)  
Dunluce Abbey  
Watercolour, 21.25 x 28cm  
Signed

€150 - 250

- 269 IRISH SCHOOL (19TH CENTURY)  
Dublin from Clontarf  
Watercolour, 25 x 35cm  
Cynthia O'Connor label verso

€200 - 300



Lot 267

- 270 THOMAS BUSH HARDY (1842-1897)  
Beached Fishing Boats with Figures, in a coastal  
landscape  
Watercolour, 12 x 19cm  
Signed and dated 1891

€200 - 300



Lot 268



Lot 270



Lot 269



Lot 272

## 271 LEO CASEMENT (20TH/21ST CENTURY)

Three Horse Race  
Oil on board, 48 x 64cm  
Signed and dated '09

€500 - 700

## 272 CONTINENTAL SCHOOL (18TH CENTURY)

Study of a Saint  
Oil on panel, 57 x 40cm

€600 - 1000



Lot 273

## 273 ENGLISH SCHOOL, 19TH CENTURY

Portrait of George IV in uniform  
Oil on canvas, 26.5 x 21.5cm

€300 - 500

## 274 AN IRISH ROSEWOOD, FEATHERED AND BONE INLAID BRACKET CLOCK,

19th century, by West and Son Dublin, the rectangular case enclosing a silvered metal dial inked with Arabic numerals and engraved foliate scrolls, on slightly outset base 23cm high

€300 - 500

## 275 AN IRISH GEORGIAN REVIVAL MAHOGANY SERVING TRAY

c.1900 of rectangular form with plain centre within a pierced out-turned gallery. 61 x 29cm

€150 - 250



Lot 274



Lot 275

- 276 AFTER FREDRICK REMMINGTON  
(AMERICAN 1861-1909)  
The Mountain Man  
Bronze, 70cm high, on a white  
marble base, the bronze signed

€1500 - 2500

- 277 AN ORMOLU AND BRONZE FIGURAL LAMP,  
in the form of a winged putto, holding aloft a leaf form  
dish and raised on a triangular scrollwork base with green  
marble platform and scroll feet. 33cm high

€600 - 1000

- 278 A PAIR OF BRONZED AND GILT METAL  
COLUMN TABLE LAMPS  
in the form of stylised palm trees, on weighted bases.  
46.5cm high each (2)

*Provenance: Deepwell, Blackrock, Co. Dublin*

€200 - 400

- 279 A VICTORIAN CHALCEDONY TAZZA OF  
NEO-CLASSICAL FORM,  
19<sup>th</sup> Century, the bowl with out-turned rim over a row of  
lobed fluted, waisted stem and octagonal rouge marble  
base. 21cm diameter, 15.5cm high

€100 - 150





280 AN IRISH GEORGE III YEW WOOD SHAPED OVAL DOUBLE DROP LEAF COMPACT HUNTING TABLE raised on chamfered square supports. 161cm long

€2000 - 3000



281 A GEORGE III INLAID MAHOGANY RECTANGULAR BREAKFAST TABLE, the top with rosewood cross banding and raised on turned centre pillar and quadruped supports with brass toe caps and castors. 138 x 120cm

€1500 - 2000



282 AN EARLY VICTORIAN MAHOGANY TUB BACK LIBRARY ARMCHAIR c.1840, the curved padded top rail with fan shaped angle brackets over a seat upholstered in faux red leather material, supported on lotus carved fore-legs and splayed hind legs.

€2000 - 3000



- 283 AN EARLY 19TH CENTURY CONTINENTAL  
DOUBLE SCROLL END MAHOGANY FRAMED  
DAY BED,  
the scroll ends in the form of swans with loose covers and  
cushions. 200cm wide, 81cm high

*Provenance: Deepwell, Blackrock, Co. Dublin*

€800 - 1200

- 284 A GEORGE III BRASS BOUND MAHOGANY  
OVAL WINE COOLER  
with brass lion mask ring handles on claw and ball feet.  
60 x 50cm

*Provenance: Deepwell, Blackrock, Co. Dublin*

€1000 - 2000





- 285 AN EARLY VICTORIAN ROSEWOOD CIRCULAR TOP JARDINIÈRE stand raised on spiral turned support and tripod base. 34cm diameter, 73.5cm high

*Provenance: Deepwell, Blackrock, Co. Dublin*

€400 - 600



- 286 A VICTORIAN MAHOGANY CANTERBURY the pierced sectional dividers with foliate scrolls, raised on turned legs with castors. 53 x 38 x 53cm

*Provenance: Deepwell, Blackrock, Co. Dublin*

€300 - 500



- 287 A PAIR OF REGENCY STYLE PAINTED TIMBER RAIL BACK SIDE CHAIRS the open backs with entwined rings, the black ground decorated with painted floral sprays and raised on turned banded legs with cane seats and loose squab cushions

*Provenance: Deepwell, Blackrock, Co. Dublin*

€300 - 500



- 288 A VICTORIAN MAHOGANY RECTANGULAR WORK TABLE with single frieze drawer raised on octagonal tapering centre pillar and quadruped platform base with bun feet. 60cm wide, 70cm high

€400 - 600



- 289 AN IRISH GEORGE I CARVED GILTWOOD WALL MIRROR,  
the rectangular mirror plate surmounted by swan neck pediment centred by acanthus fond, decorated  
with carved scrolls in low relief. 66cm wide, 140cm high

*Provenance: Deepwell, Blackrock, Co. Dublin*

€2500 - 3500



- 290 A GEORGE III MAHOGANY CORNER DISPLAY CABINET, the dentil moulded cornice above single glazed panel door, fitted two drawers above a cupboard base on bracket feet. 84cm wide, 233cm high

*Provenance: Deepwell, Blackrock, Co. Dublin*

€800 - 1200



- 293 A 19TH CENTURY FRENCH STYLE PAINTED TIMBER RECTANGULAR SIDE TABLE with lift top and fitted frieze drawer, raised on square tapering legs. 83cm wide, 45cm deep, 78cm high

*Provenance: Deepwell, Blackrock, Co. Dublin*

€500 - 700



- 291 A VICTORIAN GILTWOOD RECTANGULAR OVER MANTLE MIRROR, the frieze decorated with ram's heads, swags and flanking cluster columns. 132cm wide

*Provenance: Deepwell, Blackrock, Co. Dublin*

€700 - 1000



- 292 A 19TH CENTURY GERMAN BRASS BOUND MAHOGANY FRAMED PIER MIRROR, the rectangular bevelled mirror plate surmounted by a painted gouache panel depicting a mother and child in a mountainous river landscape with distant castle. 125 x 70cm

*Provenance: Deepwell, Blackrock, Co. Dublin*

€800 - 1200



- 295 A PAIR OF FRENCH 19TH CENTURY ORMOLU AND BRONZE FIGURAL CANDELABRA the three leaf scroll candle sconces supported by drapery clad maidens and raised on a spiral reeded circular socle with three scroll and block feet. 74cm high (2)

€2000-4000

- 294 A VICTORIAN INLAID WALNUT BREAK-FRONT CREDENZA, the central cupboard door inlaid with satinwood foliage stringing and oval lozenge flanked by single glazed panel doors and interposed by fluted Corinthian columns, the entire decorated with brass leaf banding and egg and dart raised on a platform base. 200cm wide, 104cm high, 51cm deep

*Provenance: Deepwell, Blackrock, Co. Dublin*

€2000 - 4000





Lot 295A



Lot 296



Lot 297



Lot 298

- 295A A PAIR OF GILTWOOD TWO LIGHT WALL SCONCES, in the neo-classical taste decorated with acanthus fronds and rosettes. 80cm long

€300 - 500

- 296 A VICTORIAN BRASS AND MAHOGANY TABLE TELESCOPE BY DOLLOND OF LONDON, the barrel raised on a rotating column, above folding tripod feet 104cm wide; 44cm high (including stand)

*Provenance: Deepwell, Blackrock, Co. Dublin*

€1000 - 1500

- 297 A VICTORIAN WALNUT CASED STICK BAROMETER BY BENNETT OF CORK, the case with domed top and inset thermometer with a circular well base 91cm high

*Provenance: Deepwell, Blackrock, Co. Dublin*

€800 - 1200

- 298 A FRENCH 19TH CENTURY PENDULUM CLOCK, the globe shaped clock and hanging pendulum movement held aloft by a bronzed figure of a female harvester, entitled 'Glaneuse After Auguste Moreau', raised on a red marble socle 64cm high

*Provenance: Deepwell, Blackrock, Co. Dublin*

€800 - 1200

- 299 A GEORGE II ELBOW CHAIR with plain curved splat, upholstered seat and scroll arms supports, raised on cabriole legs with pad feet and flat stretcher

*Provenance: Deepwell, Blackrock, Co. Dublin*

€500 - 700



Lot 299

300

**AN EDWARDIAN INLAID AND PAINTED  
SATINWOOD SECRETAIRE BOOKCASE**

the arcaded cornice above a painted frieze of pearl drops and circular and lancet astragal glazed panel doors on a base with fall front secretaire drawer and three further drawers, profusely decorated with foliate and drapery swags, panels and urns and figural motifs, raised on ogee bracket feet. 107cm wide, 229cm high

€3000 - 4000





301 AN EDWARDIAN INLAID AND PAINTED SATINWOOD SIDE CABINET  
in the Sheraton taste with rosewood and mahogany crossbanding and decorated with neo-classical motifs, oval paterae and oval figurative panels, fitted single frieze drawer above twin panel drawers. 95cm wide, 92.5cm high  
€1500 - 2000



302 AN EDWARDIAN SATINWOOD OVAL OCCASIONAL TABLE,  
the top centered with a painted panel depicting two putti within foliate bands, raised on slender square tapering legs and casters. 84 x 59cm  
€800 - 1200



- 303 A GEORGIAN REVIVAL PAINTED SATINWOOD DISPLAY CABINET,  
in the style of Mayhew & Ince, c.1880, the arched pediment above central doors flanked by lower cabinets, the  
base with central frieze drawer above a 'trompe l'oeil' fluted cupboard and flanked by short drawers, shaped  
aprons, on square tapering inlaid legs with spade feet and painted over all with floral and ribbon swags and  
pendants, central to the top with a fruit filled tazza, 198cm wide, 46cm deep, 238cm high

€7000 - 10000





- 304 A YELLOW SCAGLIOLA MARBLE PEDESTAL, of cylindrical form, on moulded foot. 103cm high

*Provenance: Deepwell, Blackrock, Co. Dublin*

€500 - 700



- 305 AN IRISH BRASS BOUND MAHOGANY TURF BUCKET, of typical form, the plain body with swing handle 39.5cm high

*Provenance: Deepwell, Blackrock, Co. Dublin*

€1000 - 2000

- 306 A PAIR OF GEORGE III STYLE MAHOGANY TORCHÈRE STANDS, the shaped circular tops raised on turned fluted and half baluster column on tripod stand. 107cm high each (2)

*Provenance: Deepwell, Blackrock, Co. Dublin*

€800 - 1200



307

EUGENE - ANTOINE AIZELIN (FRENCH 1821-1902)

Mignon

A large bronze figure of a seated girl with a mandolin at her side on a bow fronted base inscribed 'Mignon', signed and also inscribed F. Barbedienne Fondateur Paris, 26.4cm high

€4000 - 6000





- 308 A 19TH CENTURY FRENCH INLAID KINGWOOD OVAL JARDINIÈRE with inset zinc liner, the body decorated with inset Sèvres porcelain panels with hand-painted floral sprays, and having applied gilt brass banding and gallery, 37 x 25cm

€500 - 800

- 309 AN EDWARDIAN BRASS HEXAGONAL HANGING HALL LANTERN, the panelled glazed body partitioned by plain divides, raised on disc and ball feet 77cm high

€300 - 400



- 310 A VICTORIAN BRASS HANGING STICK BAROMETER by T. Hicks, 8 Hatton Garden, London, mounted on a mahogany panel, 10 tall

€600 - 800



- 311 A GEORGIAN STYLE PAINTED BEECH THREE TIER GRADUATED OPEN HANGING WALL BRACKET, with trellis side and base with three drawers painted with floral sprays, 69cm wide, 93cm tall

€500 - 800



312 A 19TH CENTURY FRENCH LOUIS PHILLIPE BEDSIDE LOCKER, with mottled marble tops above a central cupboard decorated with inlaid musical instruments and ribbons and swags with applied cast brass laurel swags and rosettes above a frieze drawer, having canted sides and raised on square tapering legs, 57 x 42 x 80cm high

€600 - 1000



313 A GEORGE I STYLE WALNUT FRAMED RECTANGULAR COMPACT SECRETAIRE DESK the hinged top with fold back writing section, above twin side supports and a chest of four long cockbeaded drawers with brass handle, decorated herringbone banding and cross banding on bracket feet, 62cm x 38cm x 75cm tall

€600 - 1000

314 A GEORGE IV INLAID MAHOGANY SHAPED RECTANGULAR FOLDING TOP TEA TABLE, banded in rosewood with boxwood stringing, raised on spiral turned legs with brass castors, 91 x 45cm

€1000 - 1500

315 A GEORGE III MAHOGANY SQUARE TRAY TOP NIGHT STAND with wavy rim above a pierced frieze, single drawer, panel door cupboard and a pull out pot drawer, raised on chamfered square supports. 44 x 44cm

€800 - 1200



Lot 314



316 A VICTORIAN WALNUT SHAPED OVAL TILT TOP CENTRE TABLE, the top quarter veneered with thumb moulded rim on turned centre-pillar and splayed quadruped legs with scroll feet and castors, 131 x 95cm

€1000 - 1500



317 A 19TH CENTURY BRASS BOUND MAHOGANY WINE COOLER, with twin carrying side handles over a coopered body, raised on squared supports joined by x-stretcher 72cm high; 94cm wide

€500 - 800

- 318 A GEORGE IV INLAID ROSEWOOD RECTANGULAR DOUBLE-DROP LEAF SOFA TABLE, decorated with brass stringing with twin frieze drawers and false drawer fronts, with brass handles and gadroon branding raised on plain side supports and platforms with scroll feet, 88 x 76cm

€1500 - 2000



- 319 A WILLIAM IV ROSEWOOD SHAPED RECTANGULAR FOLDING TOP CARD TABLE, with baise lined interior above a shaped apron and raised on turned tapering centre column with lotus carved collar on a quadruped shaped platform with carved paw feet with castors, 92 x 46cm

€2000 - 3000

- 320 A MAHOGANY AND BRASS CIRCULAR DUMB WAITER BY JAMES HICKS OF DUBLIN, with three trays supported on double brass columns, revolving on a base with three tapering square legs with block feet, stamped J. Hicks, 5 Lr Pembroke St, 44cm diameter, 72cm high

€1000 - 1500

- 321 A MAHOGANY SMALL BUREAU BOOKCASE, basically 18th Century, the slope front base with three long drawers, fitted interior, on bracket feet, associated period geometrically glazed cabinet top with later fret pierced swan-neck pediment, 209cm high, 66cm wide

€600 - 1000



322 A PALE FIDDLE BACK MAHOGANY AND BRASS EMBELLISHED SIDE CABINET

in Louis XV style, 19th Century French, with marble top, quadrant corners, central panelled doors inlaid with engraved brass ribbon tied trophies, the sides with conforming trellis inlay, on troupie feet, 12cm wide, 42c, deep, 102cm high

€3000 - 5000





Lot 323

- 323 AN 18TH CENTURY MEISSEN  
CIRCULAR PORCELAIN PLATE  
the white ground decorated with hand-painted floral sprays within basket weave impressed borders with gilt edging, blue underglaze crossed swords 24cm diameter and another similar, each (2)

*Provenance: Deepwell, Blackrock, Co. Dublin*

€600 - 800



Lot 324

- 324 AN 18TH CENTURY MEISSEN CHINA  
CIRCULAR BOWL,  
the white ground decorated with hand-painted floral sprays and pairs of exotic birds with floral scroll decoration in low relief and gilt edging 22cm diameter

*Provenance: Deepwell, Blackrock, Co. Dublin*

€300 - 500

- 325 AN 18TH CENTURY MEISSEN PORCELAIN  
COFFEE POT,  
of baluster form, the white ground decorated with hand-painted floral sprays 25cm high (restored)

*Provenance: Deepwell, Blackrock, Co. Dublin*

€300 - 500

- 326 A SET OF FOUR 18TH CENTURY MEISSEN  
PORCELAIN CIRCULAR PLATES,  
the white ground decorated with insects and hand-painted floral sprays with gilt edges. 22cm diameter each (4)

*Provenance: Deepwell, Blackrock, Co. Dublin*

€1000 - 1500

- 327 AN 18TH CENTURY MEISSEN PORCELAIN  
LEAF-SHAPED DISH  
the white ground decorated with hand-painted floral sprays and basket weave impressed border. 21cm wide

*Provenance: Deepwell, Blackrock, Co. Dublin*

€400 - 600



Lot 325



Lot 326



Lot 327

- 328 AN 18TH CENTURY MEISSEN PORCELAIN DISH,  
of circular form, hand-painted with floral sprays with basket weave decoration in low relief 29cm diameter

*Provenance: Deepwell, Blackrock, Co. Dublin*

€400 - 600

- 329 A PAIR OF 19TH CENTURY MEISSEN PORCELAIN PLATES,  
the white ground decorated with floral sprays contained within a gilt border. 23cm diameter each (2)

*Provenance: Deepwell, Blackrock, Co. Dublin*

€200 - 300

- 330 A 19TH CENTURY GERMAN PLATE OF OVAL FORM,  
the wavy rim and basket weave border with gilt highlights and central reserve decorated with a continental landscape with figures and a town in the distance

*Provenance: Deepwell, Blackrock, Co. Dublin*

€200 - 400

- 331 A MEISSEN PAINTED PORCELAIN TEABOWL AND SAUCER DISH,  
early 19th Century, delicately painted with figures before a distant townscape, cross swords mark and gilders number 65, together with two other saucer dishes (damaged), a Davenport spill vase and coffee can painted with classical figures en griselle, and two English 'Blanc de Chine' prunus dishes, 12cm diameter (8)

€200 - 300

- 332 A WORCESTER 'DR WALL' PERIOD ARMORIAL PART DESERT SERVICE,  
4 pieces c.1780, comprising two circular side plates, a shell mounted serving dish and a quatrefoil dish, each painted with coat of arms and motto 'Moveo et Proficior', with gilt floral sprays and cobalt borders (4)

€250 - 400



Lot 328



Lot 330



Lot 332



Lot 331



Lot 333

- 333 A GROUP OF THREE CHINESE EXPORT PUNCH BOWLS, in famille rose palette, 18th Century, (damaged) of various sizes and designs, 20-23cm diameter

€200 - 300



Lot 334

- 334 TWO CHINESE PORCELAIN 'EUROPEAN SUBJECT' SAUCER DISHES, late 18th Century, the first painted with industrial scene Dutch market, the other decorated with seated Jesuit figure en griselle. (2)

€300 - 500



Lot 335

- 335 A PAIR OF CHINESE EXPORT PORCELAIN DISHES, Qing, possibly English decorated, of oblong form, each painted with acrobats and musicians below a populated pagoda terrace, the raised border with panels of aquatic birds and insects, reserved against a gilt ground.

€400 - 600



Lot 336

- 336 A CHINESE EXPORT FAMILLE ROSE PORCELAIN DISH, Qianlong 18th Century, of oblong form, decorated with musicians and performers in a garden landscape, the raised borders with vignette panels. 39.5cm wide

€400 - 600



Lot 337

- 337 A GOOD COLLECTION OF CHINESE EXPORTWARE PORCELAIN, comprising a famille verte saucer dish, a tobacco leaf saucer dish, another blue and white example with 'cafe au lait' underside, a ruby backed circular dish (damaged), tea bowls, etc

€300 - 400



Lot 338

- 338 A COLLECTION OF ELEVEN CHINESE EXPORT PORCELAIN DISHES, 18TH CENTURY, VARIOUS PATTERNS

€400 - 600



Lot 339

- 339 A PAIR OF LARGE CHINESE EXPORT 'THEATRE DISHES',  
18th Century, of shallow oblong form, each painted with acrobats and musicians below a populated pagoda terrace, the raised border with panels of aquatic birds and insects, reserved against a gilt ground. 37 x 49.5cm

€1000 - 15000

- 340 A PAIR OF CHINESE 'CAFE AU LAIT' GROUND PORCELAIN BOWL,  
18th Century, each of circular form, the exterior with paper cut panels fitted with fruits and floral painted motifs, 14cm diameter, together with a miscellaneous collection of export ware bowls (collection)

€200 - 300



Lot 340

- 341 A CHINESE BLUE AND WHITE PORCELAIN BOWL,  
Kangxi (166-1722), of deep circular form, the interior painted with traditional river and mountain landscape rising to a serrated rim, the exterior painted with rows of flowering plants below a band of mythical animals

€600 - 1000



Lot 341

- 342 A CHINESE FAMILLE VERTE BEAKER VASE OF WAISTED CYLINDRICAL FORM,  
painted and enamelled prunus, stylised flowers and rock-work, between chevron collar and foot, vacant double ring to base, 22cm high, and a baluster vase of similar pattern and period, 21.5cm high (2)

€600 - 800



Lot 342



- 343 A FRENCH BURR MAPLE AND ORMOLU MOUNTED MANTLE CLOCK, in Empire style, of lyre shape enclosing a drum movement with white enamel dial and Arabic numerals. 36cm high

€800 - 1200



- 344 A FINE CHELSEA DERBY NEO-CLASSICAL CABINET PLATE, early 19th Century, painted with an urn to the centre reserve and insects and bellflower chains to the borders, gold anchor mark, 23cm diameter; together with a 19th Century Meissen plate, painted with a hen by a fence and scattered insects, the borders with pierced highlighted panels, cross swords mark verso, 24.5cm diameter; and an English botanical dish, probably Derby, with trellis moulded and gilt edge border, 20cm diameter (3)

€150 - 250



- 345 A FRENCH 19TH CENTURY PINK GROUND PORCELAIN DISH, of lozenge shape, painted with song birds in an open landscape with gilt floral borders 27cm wide

€200 - 300



- 346 AN IRISH ARTS AND CRAFTS YEW WOOD RELIC BOX, 19th Century, in Celtic revival by Austin of Dublin, the angled dome top applied with gilt metal tracery mounts in the form of Christian crosses enclosing a lined interior with inscribed in-set tab 'Austin Maker Dublin'. 25cm wide

€600 - 1000

- 347 A RARE 18TH CENTURY NEWCASTLE  
TRANSFER PRINTED CUP AND SAUCER  
c. 1780, by Sewell, the rich yellow ground printed in red  
tones with a depiction of a family dining in a garden set-  
ting, the reverse of the cup with a scene of the Tyne, im-  
pressed mark verso 'Sewell', the saucer 13cm diameter  
with paper label verso

€300 - 400



- 348 A PAIR OF CHELSEA PORCELAIN LEAF  
SHAPED DISHES,  
18th Century, each moulded with veined leaves in relief,  
picked out in green, iron red and aubergine tones, around  
a central reserve painted with exotic birds and landscape,  
applied with naturalistic handles, 23cm long

€500 - 700



- 349 A RARE SWANSEA PORCELAIN BOTANICAL  
DISH,  
early 19th Century, in the manner of Henry Pollard, the  
deep lozenge shape with wavy gilt edged rim, moulded  
with scallop shells to each end, the centre delicately paint-  
ed with colourful flower groups contained within a border  
of gilt painted classical urns, impressed mark verso  
'Swansea', 36cm wide

€200 - 400



- 350 A WORCESTER BLUE AND WHITE DISH, 18TH  
CENTURY,  
of shallow circular form, painted with fleur de lys motif  
within a cobalt blue band, highlighted in gilt, crescent  
mark, 22cm diameter; together with another Worcester  
blue and white dish of similar period, and a Caughley blue  
and white preserve jar and cover, 11cm high (3)

€200 - 300



- 351 A GEORGE III MAHOGANY AND ROSEWOOD  
BANDED TEA-CADDY,  
of rectangular form with hinged top enclosing a compart-  
mented interior on small bun feet, 29.5cm wide  
together with a George III satinwood tea-caddy of  
sarcophagus form 18.5cm wide

€200 - 300





Lot 352

- 352 A PAIR OF VICTORIAN CAST BRASS TWO LIGHT CANDELABRA,  
of naturalistic form, the sconces decorated with cut glass icicle droplets on scroll supports and attendant riders, after Cousteau, 25cm high each (2)

*Provenance: Deepwell, Blackrock, Co. Dublin*

€700 - 1000



Lot 353



Lot 354

- 353 A FRENCH BRASS FRAMED FOUR GLASS CARRIAGE CLOCK,  
with swing arm bracket handle, white dial with Arabic numerals  
11cm high

*Provenance: Deepwell, Blackrock, Co. Dublin*

€150 - 250



Lot 355

- 354 AN EDWARDIAN MAHOGANY MANTLE CLOCK,  
the arched top above an inset glazed brushed steel dial,  
on a stepped base  
26cm high; 57cm wide

*Provenance: Deepwell, Blackrock, Co. Dublin*

€300 - 500



Lot 356

- 355 A PAIR OF EBONISED LINLEY BOOKENDS,  
in the form of fluted column ends, 18cm high each; together with a pair of ebon banded treen urns of ovoid form

*Provenance: Deepwell, Blackrock, Co. Dublin*

€250 - 350

- 356 A RED MARBLE AND BRASS CORINTHIAN COLUMN TABLE LAMP,  
on stepped brass square base. 58cm high

*Provenance: Deepwell, Blackrock, Co. Dublin*

€150 - 250

- 357 AN EARLY 19TH CENTURY FRENCH AGATE AND ORMOLU MOUNTED MANTLE CLOCK  
of temple form, the drum-shaped movement with white enamel dial inscribed 'Signal Jeune a Paris', suspended from tympanum and flanked by four Corinthian column supports and platform base with brass ball feet. 60cm high

*Provenance: Deepwell, Blackrock, Co. Dublin*

€2000 - 4000



- 358 A FRENCH ORMOLU AND PORCELAIN MOUNTED THREE PIECE CLOCK GARNITURE,  
19th century - composed, the clock surmounted with classical urn and acorn finial over a drum cased movement with floral painted ceramic dial flanked by ormolu masks and acanthus leaves, supported on a breakfront plinth base, 33cm high.  
The associated cassettes formed with three naturalistic branches and raised central socket, foliate cast body and platform base  
41cm high

€600 - 1000





359 A PAIR OF MAHOGANY WINGBACK ARMCHAIRS, upholstered in a burnt orange fabric

*Provenance: Deepwell, Blackrock, Co. Dublin*

€400 - 600



360 A 19TH CENTURY MAHOGANY CONTINENTAL CRUTCH FRAME TOILET GLASS

with swan neck supports and serpentine front on a platform base with single drawer  
56cm high; 53.5cm wide

*Provenance: Deepwell, Blackrock, Co. Dublin*

€200 - 300



361 A PAIR OF MAHOGANY OCCASIONAL CHAIRS, the arched top-rail and seat on squared supports joined by H-stretcher, with loose cover upholstery in linen fabric with an oak leaf and acorn pattern in red

*Provenance: Deepwell, Blackrock, Co. Dublin*

€200 - 400



362 A 19TH CENTURY MAHOGANY RECTANGULAR BUTLER'S TRAY with raised panel side and integral handles on collapsible stand

*Provenance: Deepwell, Blackrock, Co. Dublin*

€300 - 500



363 AN EDWARDIAN STAINED WOOD METAMORPHIC LIBRARY STEPS CHAIR

*Provenance: Deepwell, Blackrock, Co. Dublin*

€400 - 600



364 A SET OF EIGHT SIMULATED ROSEWOOD AND PARCEL GILT DINING CHAIRS  
with rail backs, having cane seats and some with squab cushions and raised on sabre legs. (2 elbow and 6 side chairs)

€2000 - 3000



365 A FINE IRISH GEORGE IV MAHOGANY DINING TABLE  
the rectangular top with thumb moulded rim, raised on a turned center pillar and outswept quadriped legs with roundel bosses, raised on castors, (probably Cork)

€1500 - 2000



366 A GEORGE III MAHOGANY AND BOXWOOD TRIMMED BALLOT CABINET, the interior with hard aperture and arrangement of small drawers, ivory handles and lock plates, now on a stand. 89cm high, 30cm wide

€400 - 600



368 A WALNUT FRAMED WING ARMCHAIR, in mid Georgian style, 20th Century, well upholstered in yellow silk damask and with cushions

€300 - 500



367 A GILT BRONZE SKELETON CLOCK, 20th Century, by Thwaites & Reed, Clerkenwell, skewed dial and subsidiary seconds dial, on a mahogany base, glass dome and winder, 37cm high

€400 - 600



369 A PAIR OF VICTORIAN GOTHIC SIDE CHAIRS, the arched backs carved with scrolls above arched open back with upholstered green leather seat on turned tapering legs

€300 - 400



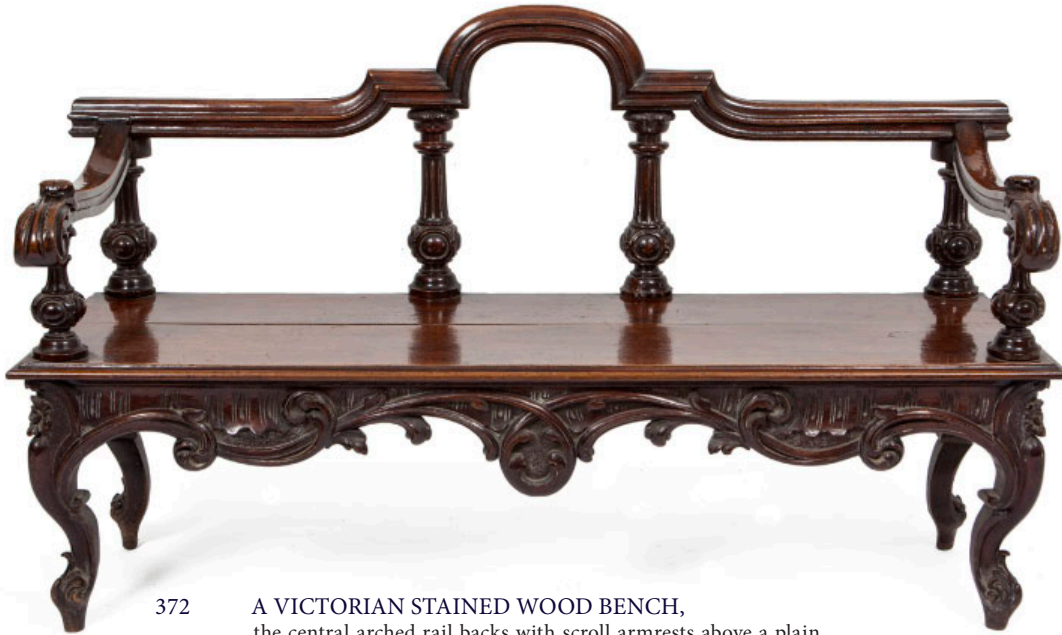
- 370 A MAHOGANY BRASS BANDED 'VERNIS MARTIN' DECORATED CYLINDER BUREAU-CABINET, c.1900, the rose marble top with brass trellis gallery above a central cupboard, flanked by mirrored arcades above short drawers, the base with a pull-out slide concealed by the cylinder long frieze drawers on tapering fluted legs and painted with romantic scenes and ribbon tied floral swags, 81cm wide, 50cm deep (closed), 152cm high

€1200 - 1800

- 371 A REGENCY ROSEWOOD BOOK CARRIER IN THE MANNER OF WILLIAMS AND GIBTON with surmounted slender spindle divider and sides with raised handles and scroll ends, the base fitted with a single drawer and reeded border. 38 x 30 x 23cm high

€1000-2000





372 A VICTORIAN STAINED WOOD BENCH,  
the central arched rail backs with scroll armrests above a plain  
panel seat and carved cabriole legs, 160cm wide

€400 - 600



375 A VICTORIAN IRISH INLAID MAHOGANY  
BANJO BAROMETER,  
the arched pediment above thermometer and brass panel  
barometer face by P. Champion, Dublin, 98cm tall

€400 - 600



373 A VICTORIAN CARVED WALNUT FRAMED  
AND SHAPED DOUBLE FRONTED  
IVORY STOOL,  
on cabriole legs with porcelain castors, upholstered in pale  
silk damask

€800 - 1200

374 A PALE MAHOGANY AND BOXWOOD  
TRIMMED CELLARET IN SHERATON STYLE  
with lidded top above a cupboard on a stand, altered, 51cm  
wide 34cm deep, 74cm high

€200 - 300

376 A 19TH CENTURY LOUIS PHILLIPE WALNUT  
AND MARQUETRY FOLDING TOP CARD  
TABLE,  
the marquetry panel frieze with applied cast ormolu  
ribbon tied wreaths raised on turned fluted legs with  
inset cast trailing bellflowers on circular base sabots,  
85cm x 43cm x 74cm tall

€600 - 900



Lot 376

- 377 A VICTORIAN OAK CASED MANTLE CLOCK, the domed top with cast brass urn finial with matching cover finials above a brass dial with steel chapter ring and chiming movement, the case decorated with applied cast brass scrolls, raised on plain feet, 71cm high, 40cm wide

€1000 - 1500



- 378 AN IRISH REGENCY MAHOGANY SUPPER TABLE, early 19th Century, circular with gadrooned rim and brass trimmed apron, on rope-twist tripod, open support platform and hipped ebony inlaid downswept legs with brass paw castors, 124cm diameter, 73cm high

€2000 - 3000



Lot 381



Lot 380

- 379 AN ARTS 'N CRAFTS EBONISED DWARF CORNER CABINET  
with raised panel back above open compartment having gallery rail above twin panel doors painted with flowers on a gilt ground and raised on bun feet, 48cm wide, 108cm high

€300 - 400

- 380 A GEORGE III MAHOGANY FRAMED UPHOLSTERED SETTEE  
with arched back, arms and seat covered in floral linen, raised on reeded tapering legs and brass caster mounts. 184cm

€1000 - 1500

- 381 AN EDWARDIAN INLAID MAHOGANY CORNER CABINET  
in two parts, with single astragal glazed door on a panel door cupboard base, with box-wood and satinwood banding, raised on bracket feet. 73cm wide, 196cm high

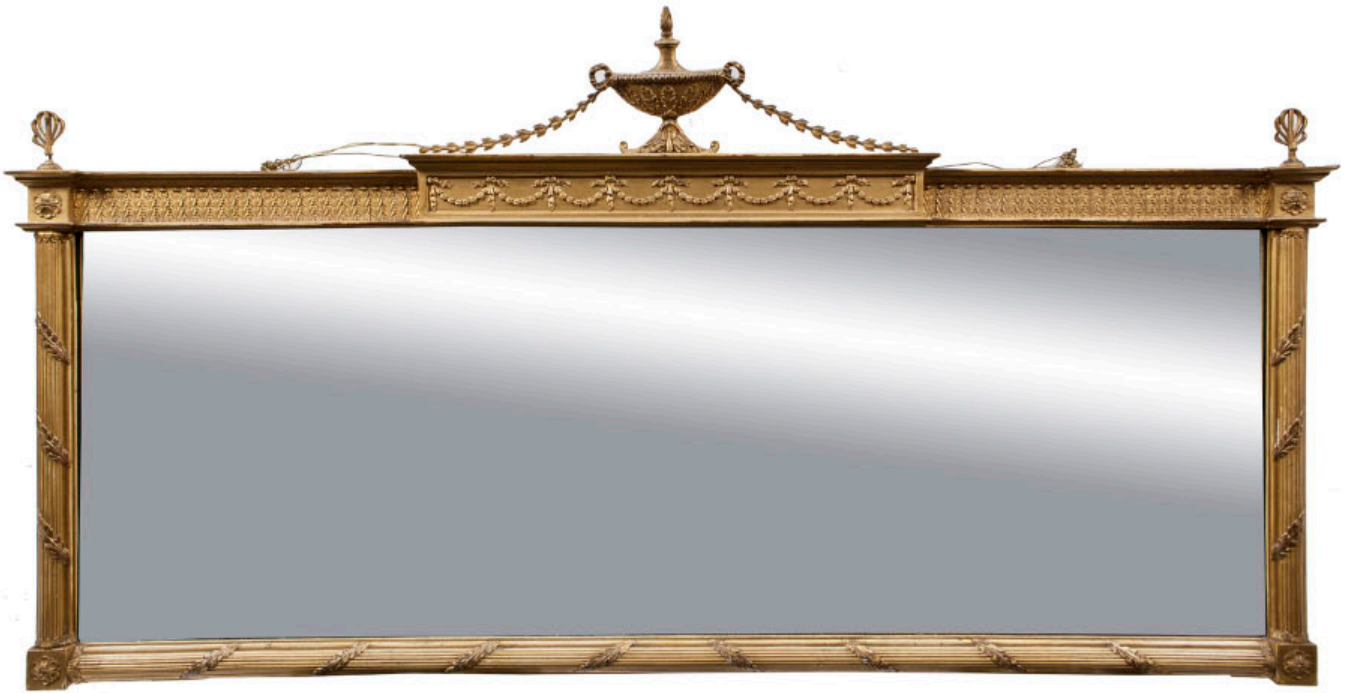
€800 - 1200

- 382 A LOUIS QUATORZE STYLE BRASS MOUNTED WALNUT THREE PIECE SALON SUITE  
comprising a two seater settee and a pair of armchairs with padded backs and seats covered in floral damask, raised on cabriole legs.

€800 - 1200



Lot 382



384 AN EDWARDIAN GEORGIAN REVIVAL OVERMANTLE MIRROR,  
the rectangular plate within a frame of leaf bound rods, surmounted by a frieze of acanthus leaves  
and centred by a plinth with central urn and swags, 149cm wide, 78cm tall

€600 - 1000



383 A GEORGE III STYLE CARVED GILTWOOD  
SERPENTINE FRONT CONSOLE TABLE,  
the green veined marble top above a frieze centred by a  
carved acanthus leaf within a foliate cartouche, the pro-  
fusely carved legs of scroll form with acanthus terminals  
and tied with an acanthus carved stretcher, 83cm wide,  
51cm deep, 80cm tall

€1000 - 1500



Lot 385

- 385 A PAIR OF 19TH CENTURY CONTINENTAL PORCELAIN ICE PAILS with rimmed domed lids and side carrying handles, the white ground decorated with gilt sprays and banding. 26cm high each (2)

*Provenance: Deepwell, Blackrock, Co. Dublin*

€300 - 500



Lot 386

- 386 A PAIR OF 19TH CENTURY STYLE OPALINE GLASS TABLE LAMPS, with fluted column and brass base. 66cm high each (2)

*Provenance: Deepwell, Blackrock, Co. Dublin*

€200 - 400

- 387 A KILLARNEY WORK INLAID MAHOGANY AND ARBUTUS RECTANGULAR WORK BOX, with moulded rims, domed top with central panel, hinged lid decorated with meandering shamrock border enclosed by a band of barber's pole stringing and inlaid oval penwork depictions of Muckross Abbey and other buildings, plain interior. 37cm wide, 26.5cm deep, 15cm high

€300 - 500

- 388 A FRENCH SEVRES PORCELAIN CABINET CUP AND SAUCER, 19<sup>th</sup> Century, the single handle cup with gilt edged rim and exterior painted with mixed floral chains, interspersed sprays and blue rocaille scrolls, conforming saucer dish Sevres mark enclosing letter B; together with another 'Sevres' type cabinet cup, and saucer, decorated with neo-classical bands, Vitruvian scrolls and gilt highlights, factory mark verso (2)

€150 - 250



Lot 388



Lot 387



Lot 388



- 389 A PAIR OF FRENCH 19TH CENTURY ORMOLU MOUNTED SEVRES PORCELAIN VASES, the bodies painted with both figural and foliate panels on blue and gilt ground, the ormolu rims with cast dragon and ring handles, and raised above four scroll legs and paw feet on a circular platform base and four block feet with applied rosettes. The bases marked with The First Republican Epoch mark for 1792-1804 in blue. 31cm wide over handles, 31cm high (2)

€2500-3500

- 390 A FRENCH SEVRES PORCELAIN CHOCOLATE CUP WITH COVER AND SAUCER, the pink ground dec with hand painted vignettes of children fishing

€300 - 500



- 393 A PAIR OF CONTINENTAL CAMPAGNA SHAPED GILDED PORCELAIN URNS, 19th century, each painted with classical Roman figured on a continuous blue ground, applied with naturalistic handles, 20cm high; together with an English amphora shaped porcelain vase, probably Spode, c.1830, painted with figures in a rural landscape, applied with swan neck handles on a square plinth base (3)

€300 - 500





Lot 397

- 394 A TURKISH WOVEN WOOL RUG,  
decorated with geometric patterns in pink and brown.  
105 x 175cm  
*Provenance: Deepwell, Blackrock, Co. Dublin*  
€300 - 500
- 395 A TURKISH WOVEN WOOL RUG,  
the brick red ground with dark blue central panel  
enclosing figurative motifs in orange and red sur-  
mounted by guard stripes of green, beige and dark blue  
226 x 144cm approx.  
*Provenance: Deepwell, Blackrock, Co. Dublin*  
€300 - 500
- 396 A TURKISH WOVEN WOOL RUG,  
the dark pink ground decorated with double central car-  
touche containing floral and foliate motifs surmounted  
by blossom decoration in blue and green, all contained  
within guard stripes in green, blue, pink and beige.  
210 x 127cm  
*Provenance: Deepwell, Blackrock, Co. Dublin*  
€600 - 800
- 397 AN AUBUSSON STYLE WOOL RUG  
decorated with octagonal lozenges and inset floral sprays  
348 x 465cm  
*Provenance: Deepwell, Blackrock, Co. Dublin*  
€800 - 1200
- 398 A FINE BLUE GROUND EMBROIDERED PANEL,  
of rectangular form, the central field woven with  
two rows of stepped quatrefoils in a rich pink/  
red tone, surrounded by stylised geometric mo-  
tifs on a petrol blue ground, within narrow border  
120 x 78cm  
*Provenance: Deepwell, Blackrock, Co. Dublin*  
€300 - 500

- 400 A SUZANI MARRIAGE BLANKET,  
the beige ground silk embroidered, with trailing floral border, centred by geometric motifs, flowerheads and foliage in blue, green, red and yellow  
200cm x 180cm

*Provenance: Deepwell, Blackrock, Co. Dublin*

€500 - 800



Lot 400

- 401 A SUZANI MARRIAGE BLANKET,  
the taupe ground embroidered with all-over geometric flowerheads and trailing foliage in madder red and cerise pink silk, linen backed  
221 x 175cm

*Provenance: Deepwell, Blackrock, Co. Dublin*

€800 - 1200



Lot 401

- 402 A LARGE PERSIAN WOOL NAVY GROUND CARPET,  
20th Century, the rectangular field woven with red diamond shaped medallion within a lozenge reserve, contained within broad borders filled with palmettes and geometric bands, 347 x 185cm

€500 - 800



Lot 403

- 403 A SMALL PERSIAN RED AND NAVY GROUND RUG,  
the central reserve woven with vase and flowers with tendrils and scattered flowerheads, all within multiple narrow borders, 96 x 64cm

€100 - 200



Lot 404

- 404 A FACET CUT Mallet SHAPED DECANTER, Waterford, early 19th century, later engraved "Loyal Dublin Society. Glorious Memory" and a depiction of the King on horseback. with an associated moulded target stopper.  
22cm high

€200 - 300



Lot 405

- 405 A DOUBLE LIPPED WINE GLASS, RINSER AND ASSOCIATED STAND, Irish, late 18th century, later engraved "The Glorious Immortal Memory of King William III. Boyne July 1st 1690" and with fern and flower heads  
the bowl 9.5cm high; the stand 18cm diameter

€400 - 600



Lot 407

- 406 AN ENGLISH EARLY GEORGIAN TRUMPET SHAPED GLASS WITH TEAR-DROP STRAIGHT STEM, on a folded foot, inscribed "The Glorious and Immortal Memory of King William III. Boyne 1st July 1690" and with a depiction of the King on horseback with a star  
16.5cm high

€300 - 500

- 407 A RARE VOLUNTEER TOASTING GLASS, Belfast, engraved "Ards Volunteers 1781" and with a spray of roses and an insect  
12cm high

€500 - 1000

A RARE HALF-PINT DECANTER,  
probably Belfast, triple ring neck, well engraved with Walls  
of Derry, The Foyle, shipping and soldiers and inscription  
"Apprentice Boys of Derry Club, Founded 1814" and "No  
Surrender" with a wreath and stopper  
19cm high  
Later well engraved in the manner of Joseph Eisert.

€1000 - 1500





Lot 409



Lot 410



Lot 411



Lot 412



Lot 414

- 409 A BOTTLE SHAPED DECANTER, probably Dublin, (mid 19th century), with contemporary wheel cut engraving, to one side a medallion of William III as a Roman emperor "The Glorious & Immortal Memory 1690" and to the other the Royal arms and mottoes below "King & Constitution"  
23cm high

€400 - 800

- 410 A BLOWN AND MOULDED MALLET SHAPED DECANTER, WITH DOUBLE RING NECK  
c.1800, with fluted base, Cork, Waterford or Belfast, later engraved "The Glorious Memory of King William III Boyne July 1st 1690" and with a depiction of the King on horseback in the manner of Franz Tieze, 22cm high

€400 - 800

- 411 A PENROSE TYPE BLOWN AND MOULDED TRIPLE-DOUBLE MILLED RING NECK DECANTER

c.1800, later engraved in the style of Franz Tieze "Erin go Bragh", within a border of shamrocks and a panoramic landscape of romantic Ireland icons  
21cm high

This lot compares with engraving by Franz Tieze on a jug in the National Museum Ireland.

€300 - 500

- 412 A HALF-PINT MALLET SHAPED FOUR SQUARE RING-NECK DECANTER,

19th century, possibly Belfast with well engraved floral decoration with "Success to the Cork Volunteers" added later, with an associated stopper  
18cm high

€200 - 300

- 413 A PENROSE TYPE BLOWN AND MOULDED TRIPLE-RING DECANTER

c.1800, later engraved in the style of Franz Tieze "Erin go Bragh", within a border of shamrocks and a panoramic landscape of romantic Ireland icons  
22cm high

Engraved by the same hand as lot 411.

€400 - 700

- 414 AN ENGLISH GEORGIAN TRUMPET SHAPED STEMMED GLASS, WITH TEAR

on folded circular foot, later engraved "The Glorious and Immortal Memory of King William III. Boyne 1st July 1690"  
7.75cm high

€300 - 500



415 A PAIR OF FLASK SHAPED DECANTERS, 19th century, probably Dublin, well engraved "Loyal True Blue Orangemen of Dublin" and a depiction of the King crossing the Boyne, inscribed "King William III 1690" 18cm high (variations, one of the inscriptions is semi-erased)

€1000 - 1500





Lot 416

- 416 A RARE MINIATURE TRIPLE-RING NECK DECANTER, early 19th century, engraved "A Trifle from Waterford 1805", 9.5cm high; and another example 9.5cm high also (2)  
These are probably sales samples converted to souvenirs  
€500 - 800

- 417 AN ENGLISH GEORGIAN BELL SHAPED WHITE TWIST STEMMED GLASS ON FOOT, later engraved "Navigation and Trade" and a depiction of a three masted sailing ship  
8.25cm high  
€400 - 600



Lot 417



Lot 419

- 418 AN ENGLISH GEORGIAN LIQUEUR GLASS WITH WHITE TWIST STEM, on a broad foot, later crudely engraved with a harp and the motto "Mallow Volunteers"  
17cm high  
€250 - 350

- 419 AN ENGLISH GEORGIAN WHITE TWIST STEMMED CLARET GLASS, the bowl engraved later "The Sign of The Chair" and a depiction of a sedan chair being carried by two men  
14.5cm high  
€300 - 500



Lot 420



Lot 421

- 420 AN ENGLISH GEORGIAN FLARED ALE GLASS, the bowl engraved with hops on tall mercury twist stem, on broad foot  
17cm high  
€300 - 500

- 421 A FINE ENGLISH GEORGIAN FLARED ALE GLASS, on mercury twist stem, on broad folded foot  
20cm high  
€600 - 800

- 422 A RARE ENGLISH CORDIAL GLASS,  
early 18th century, plain bowl and tall stem on domed  
folded foot  
19cm high

€1000 - 1500

- 423 A WINE GLASS RINSER,  
Irish, c1800, later engraved with  
Williamite symbols and inscriptions  
10.5cm diameter

€150 - 250

- 424 A CUT GLASS PRESERVE JAR AND COVER,  
Irish c.1800, with diamond cutting, fluted rim, on squat  
knobbed stem with fan undercut foot  
17cm high  
together with another flat cut preserve jar and cover on  
moulded foot, perhaps Cork  
15cm high  
(2)

€300 - 500

- 425 A FINE FLAT CUT URN SHAPED VASE AND  
COVER,  
c.1790, probably Dublin, with pyramid finial, swagged  
and faceted body raised on octagonal foot  
27cm high

€300 - 500





Lot 426

- 426 A CUT BELL SHAPED LAMP HOLDER,  
Irish, early 19th century; together with a cylindrical cut  
preserve jar, cover and stand  
the lamp holder: 21.5cm high

€300 - 500



Lot 427

- 427 A CUT PEAR SHAPED OIL BOTTLE AND  
STOPPER,  
c.1800 on lobed foot, another similar; to-  
gether with a rare pair of moulded navette  
shaped salt cellars on oval feet, probably Cork  
the bottle: 14cm high

€200 - 300

- 428 A COLLECTION OF FOUR CUT GLASS WATER  
JUGS IN IRISH STYLE

€500 - 700

- 429 A COLLECTION OF FOUR VARIOUS  
DECANTERS

€200 - 300

- 430 A REGENCY CUT GLASS TWO LIGHT  
CANDELABRA,  
the twin bulb sconces raised on an oblong cut glass drip  
tray, on a cylindrical prismatic cut centre column and a  
star cut circular base. 31cm tall

€200 - 300



Lot 428



Lot 429



- 431 A WATERFORD GLASS OGEE SHAPED BOWL,  
COVER AND STAND C1830  
with bands of raised diamonds, star cut base  
13cm diameter

*Provenance: Henry Naylor Sale, Murphy, Buckley & Keogh 14/09/1959 Lot 1*

€200 - 300



- 432 AN IRISH FLAT CUT CIRCULAR SHALLOW  
DISH,  
late 18th century, with silver shaped rim and star cut base  
23cm diameter

€100 - 200

- 433 AN IRISH EARLY 19<sup>TH</sup> CENTURY CIRCULAR  
BOWL,  
with flared rim above a bulbous body raised on a circular  
spreading foot. 22cm diameter

€200 - 400



- 434 A 19<sup>TH</sup> CENTURY IRISH CUT GLASS JUG c.1800  
OF BALUSTER FORM,  
with cut swags. 16cm tall

€150 - 200





- 435 A VICTORIAN MAHOGANY SQUARE THREE-TIER WHATNOT with turned supports and fitted base drawer on turned legs with castors 43cm wide; 128cm high

*Provenance: Deepwell, Blackrock, Co. Dublin*

€400 - 600

- 436 A GEORGIAN LEATHER BOUND METAMORPHIC POLE LIBRARY STEPS with brass studs. 205cm high

*Provenance: Deepwell, Blackrock, Co. Dublin*

€1200 - 1600



- 437 AN GEORGE IV INLAID MAHOGANY BERGÈRE ARMCHAIR, the frame banded in satinwood with boxwood and ebon stringing, raised on square tapering legs with castors

*Provenance: Deepwell, Blackrock, Co. Dublin*

€600 - 800

- 438 A VICTORIAN GILTWOOD PIER MIRROR, the domed top surmounted by carved foliage and scrolls the frame with gadroon banding. 150cm high, 63cm wide

*Provenance: Deepwell, Blackrock, Co. Dublin*

€500 - 700



- 439 A GEORGE III MAHOGANY COMPACT CHEST of four long graduated drawers with brass handles on bracket feet. 80cm wide, 46cm deep, 81cm high

*Provenance: Deepwell, Blackrock, Co. Dublin*

€800 - 1200





- 440 A LOUIS XV STYLE INLAID KINGWOOD BOMBÉ COMODE,  
the veined marble top with thumb moulded rim, above two drawers with leaf cast brass handles and mounts, raised on slender sabre legs. 118 x 53cm deep

€1500 - 2000



- 441 A LOUIS XVI STYLE CARVED WOOD FRAMED CANAPE,  
with broken cord banding the arched back, seat and armrests covered in striped material and raised on turned legs. 130cm wide

€1500 - 2500



- 442 A GEORGE III BRASS BOUND MAHOGANY PLATE BUCKET, the coopered body with swing handle  
37.5cm high x 37cm diameter

*Provenance: Deepwell, Blackrock, Co. Dublin*

€1000 - 2000



- 443 A 19TH CENTURY MAHOGANY FOLDING CAMPAIGN TABLE, of rectangular form, on X-shaped support.  
88 x 44 x 72cm high

*Provenance: Deepwell, Blackrock, Co. Dublin*

€300 - 500



- 444 A GEORGE III INLAID MAHOGANY FOLDING TOP PATIENCE TABLE, having single frieze drawer, the entire decorated with satinwood stringing and raised on square tapering legs.  
44cm wide, 74.5cm high

*Provenance: Deepwell, Blackrock, Co. Dublin*

€700 - 1000

- 445 A PAIR OF IRISH EBONISED AND GILT DECORATED WALL MIRRORS, 19th century, of oval form, each channelled frame applied with facet cut clear glass beads  
55cm high each (2)

*Provenance: Deepwell, Blackrock, Co. Dublin*

€500 - 800





446 A WILLIAM IV CARVED GILTWOOD OVERMANTLE MIRROR, the serpentine top surmounted and centred by an acanthus spray above a shaped rectangular plate and flanked by leaf scrolls, 170 x 150cm

€3000 - 4000



447 AN EDWARDIAN MAHOGANY TWIN PEDESTAL DESK, of rectangular form, the top inset with tooled green leather scribe above central frieze drawer and flanking four drawer pedestals with turned wooden handles. 151cm wide, 98cm deep

*Provenance: Deepwell, Blackrock, Co. Dublin*

€1000 - 2000



- 448 A VICTORIAN STYLE MAHOGANY UPHOLSTERED LONG STOOL, of rectangular form, raised on tapering baluster supports 107cm wide; 42cm high

*Provenance: Deepwell, Blackrock, Co. Dublin*

€100 - 200



- 449 A REGENCY MAHOGANY SQUARE TOP TABLE with reeded rim on reeded centre pillar on quadraped base and bun feet. 68cm high, 52.5cm wide

*Provenance: Deepwell, Blackrock, Co. Dublin*

€700 - 1000



- 450 A VICTORIAN BRASS BOUND WALNUT CAMPAIGN CHEST of two short and three long drawers, with full front secretaire section and with brass recessed handles. 90 x 42 x 95cm

*Provenance: Deepwell, Blackrock, Co. Dublin*

€800 - 1200



- 451 A LOUIS XIV STYLE PAINTED TIMBER DOUBLE BED in olive green, each corner decorated with composed acorn finials above fluted columns, with inset cushioned bed-back, upholstered in pale yellow fabric with trailing foliage and pink and red flowers, 180cm wide

*Provenance: Deepwell, Blackrock, Co. Dublin*

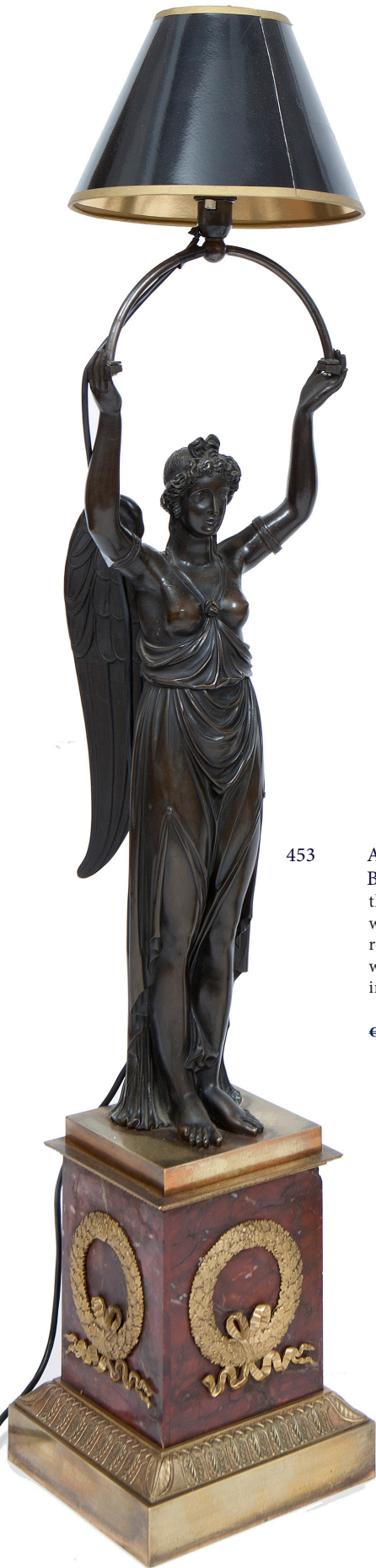
€600 - 1000



- 452 A LARGE FOUR-SEATER SOFA, with loose cushions upholstered in a peppermint green linen fabric 235.5cm wide

*Provenance: Deepwell, Blackrock, Co. Dublin*

€300 - 500



453

A PAIR OF 19TH CENTURY FRENCH  
BRONZE WINGED ANGELS,  
their arms held aloft, supporting later lamp fittings,  
wearing Diaphanous robes and raised on square  
rectangular marble plinths with applied ormolu  
wreaths on stepped bases with cast acanthus band-  
ing, 79cm in total, bronze figures 54cm tall

€2000 - 3000





454 A GEORGE III MAHOGANY CIRCULAR SNAP TOP TEA TABLE, raised on baluster turned centrepillar and tripod base, 73cm diameter, 70cm high

€300 - 500



455 A MAHOGANY TRAY TOP SILVER TABLE, 19th Century, in George III style, the moulded rectangular top above a shaped apron and shell capped cabriole supports, ending with claw and ball feet, 75cm wide

€500 - 700



456 A GEORGE III MAHOGANY OCTANGONAL TOP WINE TABLE, raised on baluster turned centrepillar with carved collar and egg and dart band raised on outswept tripod legs, 30cm diameter, 69cm tall

€500 - 800

457 A GEORGE III STYLE INLAID SATINWOOD HALF CIRCLE SIDE TABLE, the top with radial stringing and mahogany lozenges, raised on square tapering banded legs, 119 cm wide diameter, 59cm deep, 84cm high

€1000 - 1500



458 A POLISHED GILT STEEL CURB FENDER, 'a la Egyptienne', French, 19th Century, with gallery rail supported by pylons, the sides with sphinxes, 168cm wide, 49cm deep; together with a pair of associated andirons.

€1000 - 1500





- 459 A GEORGE III MAHOGANY SLOPEFRONT BUREAU,  
the interior fitted with pigeon holes and drawers with twin conceded compartments above, two short and three long drawers planted by fluted pillasters on bracket feet, 112cm wide, 112cm tall, 58cm deep

€500 - 800

- 460 A GEORGE III MAHOGANY SILVER TABLE,  
the later rectangular tray top with up-turned rims, shaped apron, raised on shell capped, acanthus leaf carved legs and hair claw feet, the underside of the table bearing trade label "141 Lwr Baggot Street". 85cm wide, 55cm deep, 72cm high

€1000 - 1500





461 A MAHOGANY AND BRASS INLAID VITRINE DISPLAY CABINET, in Directoire style, c.1900, the bevelled glazed cabinet with galleried top, the table base with a sliding glazed top over a velvet lined interior, on square tapering inlaid legs with brass sabots, 92cm wide, 62cm deep, 167cm high

€1500 - 2000



462 AN IRISH REGENCY MAHOGANY AND BRASS INLAID FOLD OVER TOP TABLE early 19th Century, with reeded rims, panelled frieze on rope twist tapering legs with brass castors

€800 - 1400



463 AN EARLY VICTORIAN ROSEWOOD SHAPED RECTANGULAR FOLDING TOP TEA TABLE, the moulded frieze with scroll terminals on a square tapering shaped center column on a quadruped platform with paw feet and castors, 91 x 45cm

€2000 - 3000



464 A CHINESE BLACK AND GILT LACQUER BERGERE SETTEE in the Chinoiserie manner with cane back, sides and seat with loose squab cushions. 162cm wide  
*Provenance: Deepwell, Blackrock, Co. Dublin*

€400 - 600

- 464A A FRENCH 19TH CENTURY RECTANGULAR ORMOLU AND GREEN VEINED MARBLE DESK STAND, fitted twin inkwells flanking a model of an eagle with outstretched wings, having a deep pen well and with applied tongue and dart rim and neo-classical motifs,

raised on cast square feet. 35 x 22 x 22cm high

€800-1200



- 465 A FINE SATINWOOD, HAREWOOD AND ROSEWOOD CROSS BANDED SEMI ELLIPTICAL COMMODE, in George III style, the shaped top with inlaid paterae and fanned radial panels above a single drawer frieze set in three sections with ribbon tied bellflower swags and bowed cupboard door centred with inlaid oval reserve, enclosing a shelved interior, on short tapering feet, 139cm wide

€4000 - 6000



Lot 468

- 466 A GEORGE IV INLAID SATINWOOD RECTANGULAR BOX  
with a hinged lid and compartmented interior, kingwood banding and ebony stringing, 23cm wide, 13cm deep, 12cm high, and another tea caddy

€100 - 200

- 467 A VICTORIAN WALNUT TEA CADDY, rectangular with a slight double led, the interior with twin zinc paper lines compartments, 17cm high, 14cm wide, 12cm deep

€100 - 150



Lot 469

- 468 A GEORGE III WALNUT AND MARQUETRY CASKET SHAPED CADDY, fitted interior, on gilt-metal spherical feet, 17cm wide, 13cm high

€150 - 200

- 469 A VICTORIAN SIMULATED WALNUT HALF CIRCULAR FOLDING TOP CARD TABLE with moulded rim and raised on turned centre pillar with quadruped base and carved scroll feet. 88cm wide

€100 - 200



Lot 471

- 470 A PAIR OF ART DECO CREAM LEATHER UPHOLSTERED ARMCHAIRS, with applied timber panels. 78cm high, 81cm deep, 76cm wide

€600 - 1000

- 471 A SMALL RECTANGULAR YEOWOOD BOX, of rectangular form with rounded corners and domed hinged cover. 16 x 12cm; together with a timber cased adjustable desk calendar, of rectangular form, on spreading foot; an oval inlaid mahogany twin handled tray, with central conch shell motif and another oval tray

*Provenance: Deepwell, Blackrock, Co. Dublin*

€100 - 150



- 472 A PAIR OF 19TH CENTURY TIMBER AND GESSO BOW FRONTED SIDE TABLES  
the marble tops inlaid in the neo-classical taste with half patera and drapery swags raised above a frieze centred with a blue jasperware plaque, flanked by bas relief applied swags and portrait medallions, raised on square tapering legs and block feet.  
107cm wide, 41cm deep, 84.6cm high

€3000 - 5000

- 473 AN UNUSUAL LARGE IRISH VICTORIAN WALL CLOCK OR BANKING CLOCK,  
by John Chancellor of Dublin, the large gilt wood moulded frame enclosing a painted enamel dial. These large outside clocks were frequently found in Banking Halls and large public offices in Dublin, 82cm diameter

€1500 - 2000





Lot 474

- 474 A GILT BRASS CARRIAGE CLOCK,  
19th century, with quarter repeater movement, the engraved brass face inset with enamel dial and Roman numerals, the secondary second dial having bevelled glass side and body panels, and engraved scroll banding. 15cm high

*Provenance: Deepwell, Blackrock, Co. Dublin*

€1200 - 1600



Lot 475

- 475 AFTER W.C. MARSHALL RA (19TH CENTURY)  
Lear & Cordelia  
Copeland parian model, 29.5cm high x 31cm wide  
Stamped Copeland

*Provenance: Deepwell, Blackrock, Co. Dublin*

€300 - 500

- 476 A VICTORIAN STYLE AUTOMATON,  
of rectangular form, the cased glazed body covered in soft pink velvet, enclosing a hot air balloon, American flag and dancing ladies, entitled 'Hot Dreams'; together with a collection of wastepaper baskets

*Provenance: Deepwell, Blackrock, Co. Dublin*

€10 - 20



Lot 477

- 477 A GEORGE III STYLE MAHOGANY CIRCULAR  
TURF BUCKET  
with brass banding and swing handle, 31cm diameter,  
30cm tall

€0 - 0



- 478 A MAHOGANY CROSSBANDED AND LEATHER INSET PARTNER'S DESK, in Georgian style, the rectangular top with tooled leather scribe and three frieze drawers on twin pedestal supports, each fitted with three short drawers on shell capped cabriole supports.

€1000 - 1500



- 479 A COMPOSED SET OF SEVEN CORK MAHOGANY 'ELEVEN BAR' BOXWOOD INLAID DINING CHAIRS one early 19th Century; and a set of six later examples, similar with green hide upholstery

€1000 - 1500



Lot 480

480 AN EARLY 19TH CENTURY BLOOR DERBY PART DINNER SERVICE

the white ground decorated with bands of purple and gilt foliate in a Vitruvian scroll style decoration with gadroon borders comprising twelve soup plates, twenty-nine dinner plates, two small tureens and covers, one stand, a large tureen and cover and an oval meat dish

*Provenance: Deepwell, Blackrock, Co. Dublin*

€1000 - 2000



Lot 481

481 A PAIR OF 19TH CENTURY CHINESE CANTON PORCELAIN TANKARDS

the white ground decorated with handpainted floral sprays in pink

*Provenance: Deepwell, Blackrock, Co. Dublin*

€100 - 200



Lot 482

482 A PAIR OF IMARI PORCELAIN VASES OF BALUSTER FORM, decorated with foliate bands in burnt orange and gilt. 31cm high each (2)

*Provenance: Deepwell, Blackrock, Co. Dublin*

€150 - 250



Lot 483

483 AN EDWARDIAN T. GOODE AND COMPANY CHINA TEA SERVICE,

the white ground decorated with floral panels within a blue border picked with copper lustre comprising tea pot, cream jug, sugar bowl, waste bowl and a quantity of cups, saucers and side plates

*Provenance: Deepwell, Blackrock, Co. Dublin*

€200 - 400

484 A 19TH CENTURY GERMAN PORCELAIN FIGURAL CANDLESTICK

in the form of a young man carrying a basket standing by a tree trunk on a rocky floral base. 37cm high

*Provenance: Deepwell, Blackrock, Co. Dublin*

€200 - 400



Lot 484



Lot 485

485 A 19TH CENTURY SITZENDORF PORCELAIN FIGURAL CANDLESTICK

in the form of a shepherdess carrying a bird cage, standing by a tree trunk with attendant sheep. 27cm high

*Provenance: Deepwell, Blackrock, Co. Dublin*

€200 - 400

- 486 A 19TH CENTURY CONTINENTAL CHINA JUG, the white ground decorated with transfer printed scenes of children at play and at study, the entire decorated with gilt leaf banding

*Provenance: Deepwell, Blackrock, Co. Dublin*

€150 - 250



Lot 486

- 487 A MISCELLANEOUS COLLECTION OF SHAPED OVAL CHARGERS, including four Victorian and two later examples

*Provenance: Deepwell, Blackrock, Co. Dublin*

€40 - 60



Lot 487

- 488 A T. TILL & SONS SHANGHAI PATTERN MEAT PLATTER, of oval form with gravy well; another smaller and a miscellaneous collection of other items

*Provenance: Deepwell, Blackrock, Co. Dublin*

€50 - 70

- 489 A WORCESTER BLUE AND WHITE BOWL of circular form, the exterior decorated with floral sprays and butterflies, crescent mark to the underside

*Provenance: Deepwell, Blackrock, Co. Dublin*

€200 - 400



Lot 489

- 490 A WORCESTER BLUE AND WHITE TEAPOT, of ovoid form, the cover with rose finial, the body with floral decoration

*Provenance: Deepwell, Blackrock, Co. Dublin*

€200 - 400



Lot 490

- 491 A PAIR OF BLUE AND WHITE CONTINENTAL GIEN JUGS, with floral motif decoration; together with a Mason's ironstone 'Green Dragon' pattern baluster shaped jug, with panelled body and dragon handle

*Provenance: Deepwell, Blackrock, Co. Dublin*

€100 - 150



Lot 491



Lot 492

- 492 AN ORIENTAL CELADON GLAZED CHARGER, 19th century, of shallow circular form, with central medallion enclosed by incised scrolling border 41cm diameter

*Provenance: Deepwell, Blackrock, Co. Dublin*

€100 - 200



Lot 493

- 493 AN ANTIQUE STYLE BOWL, of circular form, containing a collection of multicoloured marble eggs and papier maché pomegranates

*Provenance: Deepwell, Blackrock, Co. Dublin*

€100 - 150



Lot 495

- 494 AN EXTENSIVE ROYAL CROWN DERBY IMARI PATTERN TEA AND COFFEE SERVICE, comprising over twenty pieces, including a teapot on stand, milk jug etc. finely decorated with floral pattern and gilt highlights (100 items approx)

*Provenance: Deepwell, Blackrock, Co. Dublin*

€200 - 400

- 495 A PAIR OF COPELAND BLUE AND WHITE TRANSFER PRINTED VASES AND COVERS, late 19th Century, each of octagonal shape, decorated with landscape, factory stamp to base, fitted on associated timber base

€200 - 300

- 496 A CHINESE POWDER BLUE AND GILT DECORATED PORCELAIN GOURD VASE, 18th Century, of elegant graduated form, decorated in famille verte enamels with prunus and pond scenes on a white ground, 23.5cm high

€300 - 500

- 497 A CHINESE BLUE AND WHITE GARLIC BULB PORCELAIN VASE, 18th Century, with flared top and lobed neck over a pear shaped body, decorated with paper cut reserves on a powder blue ground, painted with landscape, antiques, insects and foliage, vacant double ring to base, 24cm high

€500 - 700



Lot 496



Lot 497



Lot 494

498

A GEORGE III LIVERPOOL CREAM WARE COMMERATIVE JUG,  
of baluster form, decorated with a transfer printed portrait of "LEINSTER, the Humane  
& Great", within a laurel wreath, the obverse inscribed Duke of Leinster Marquis of  
Kildare etc. with dedication in memory. 18cm tall

€400 - 500





Lot 501

- 499 A CHINESE BLUE AND WHITE PORCELAIN GINGER JAR AND COVER, Kangxi, 1660-1722, the top and lobed body painted with prunus spray on a trellis ground with leaf shaped white ground reserves fitted with precious and auspicious symbols, vacant double ring to base. 23cm high

€500 - 700

- 500 A COLLECTION OF THREE JAPANESE PAPIER MACHE AND GILT DECORATED BOXES, late 19th Century, comprising of one oblong box, the cover decorated with figures seated in an interior, 30cm, and two small boxes of irregular shape

€100 - 150



Lot 502

- 501 A MISCELLANEOUS GROUP OF CHINESE CERAMICS, comprising of a late 17th Century biscuit glazed squared dish, in famille verte palette, a pigeon blood blue monochrome baluster vase, 9.5cm high, a famille verte saucer dish inked with moto 'Virescit Vulnere Virtus' 16cm diameter, and 18th Century lozenge shaped spoon tray, 12cm wide, and an unusual famille rose tea bowl painted with a ram by trees and rocks, 7cm diameter, and another tea bowl, with gilt spot exterior (6)

€200 - 300

- 502 A LARGE BALUSTER SHAPED PORCELAIN VASE AND COVER, 19th Century, in the Chinese taste, decorated with alternating panels of prunus and antiques, 30cm high, together with an armorial circular dish, probably Samson of Paris, 23cm diameter, and a square section armorial tea caddy(3)

€300 - 500



Lot 503

- 503 A COLLECTION OF SIX CHINESE EXPORT PORCELAIN SAUCER DISHES, Yongzheng / Quinlong, comprising of a fine ruby backed famille jeune example painted with insects and peonies on an eggshell body, 10cm diameter; a fine eggshell famille rose dish painted and enamelled with sparrows and stylised peonies within cellular and gilt borders, 11.7cm diameter; and four others (6)

€300 - 500

- 504 A CHINA EXPORT BLUE AND WHITE PUNCH BOWL, 18th Century, of deep circular form, the body with anhua decoration, carved with bamboo and chrysanthemums below a trellis border and brown wash rim, 27cm diameter

€200 - 300



Lot 504





Lot 505

- 505 A CHINESE PALE AND RUSSET JADE RITUAL VESSEL, 18TH/19TH CENTURY, carved in shallow relief with stylised taotie mask and archaic scrolls, the handle with double ended chilong dragon with detachable mouth ring 12cm high

€4000 - 6000

- 506 A CHINESE PALE JADE PENDANT, 19th Century, of pierced irregular form representing 'Happiness'; and another (2)

€200 - 300

- 507 A JAPANESE SHIBIYAMA CASED ALBUM, containing approx. 72 hand coloured postcards, grouped by location.

€200 - 300

- 508 A JAPANESE CARVED IVORY NOH MASK NETSUKE, Meiji period, modelled with a grinning expression

€100 - 150

- 509 A CHINESE CARVED IVORY SQUARE SECTION SEAL, 19TH Century, the top with chamfered edge and inlaid with yellow metal lozenge, 4.5cm high; together with a carved ivory necklace, of graduated spheres, 83 cm long (2)

€200 - 300

- 510 AN INTERESTING MISCELLANEOUS COLLECTION, comprising three miniature Buddha's, a coral handle, a polished ammonite buckle, 2 carved boxwood conch shells, a carved horn 'hound' finial, yellow metal hat pins, yellow metal filigree bracket etc

€30 - 50



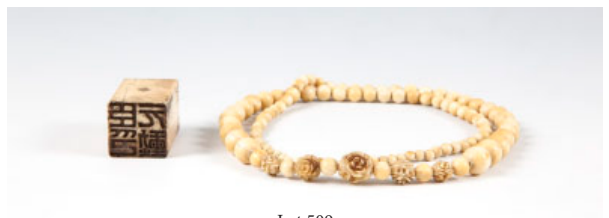
Lot 506



Lot 507



Lot 508



Lot 509



Lot 510



Lot 511



Lot 514



Lot 512



Lot 513



Lot 517



Lot 516

- 511 A CARVED TORTOISE SHELL CARD CASE, 19th Century, decorated to both sides with Gothic architecture, together with a 19th Century tortoise shell and silver inlaid box and cover, of domed rectangular form (2)

€100 - 200

- 512 A 19TH CENTURY DERBY PORCELAIN BALUSTER VASE, painted with a chain of summer flowers against a white ground, with gilt bands to foot and collar, base marked with crown over 'D', together with an 18th century brocade group moulded as a gilt seated by a flowering tree, and a flower encrusted water can, Victorian, marked 'G. Bale' in an underglaze blue.

€200 - 300

- 513 A MEISSEN PAINTED PORCELAIN CABINET CUP, early 19th Century, painted with depiction of a lady under a parasol, with insects and butterflies against a white ground, on an associated saucer, an 18th Century blue and white Worcester tea cup, two 19th century Derby teacup and teabowl and a Dr Wall period Imari pattern teacup, etc

€150 - 250

- 514 A 19TH CENTURY FIGURAL GROUP, modelled in the form of cupid standing by a fluted column, holding a torch, on gilt and floral painted circular base.

€200 - 300

- 515 A PAIR OF 18TH CENTURY BLUE AND WHITE WORCESTER DISHES, of lozenge oval form, the interior painted with floral groups and insects against a white ground, with moulded trellis borders, crescent marks verso

€300 - 400

- 516 A SET OF 3 PAINTED PORCELAIN BOTANICAL DESSERT PLATES, probably Coalport, 19th Century, each painted to the centre with individual flower groups and contained within blue and gilt panelled borders, 23cm diameter

€300 - 500

- 517 A CONTINENTAL GLAZED AND PARIAN BUST, late 19th century, of an elegant lady in 18th attire, modelled on a floral moulded naturalistic base, 45cm high

€300 - 500



518 A SET OF TWELVE WALNUT FRAMED WILLIAM AND MARY ARMCHAIRS, the arched backs with pierced carved panels and cane backs and seats with carved scroll armrests on turned and block legs with stretchers

€2000- 3000

519 A GEORGE III INLAID MAHOGANY BREAKFRONT CHEST with fitted brushing slide above three drawers with brass ring handles flanked by inlaid satinwood fluted pilasters and raised on square tapering feet. 101cm wide, 58.5cm deep

*Provenance: Deepwell, Blackrock, Co. Dublin*

€1200 - 1600



520 A GEORGIAN MAHOGANY LADDER BACK ELBOW CHAIR, with gros needlepoint upholstered seat, the rich brown ground with floral decoration, raised on turned tapering supports; together with a mahogany and canework single chair, with hobnailed and ring turned central splat, above caned seat, on blocked tapering supports and a mahogany lift-top commode, on spiral turned tapering supports 53cm wide x 30cm deep x 47cm high

*Provenance: Deepwell, Blackrock, Co. Dublin*

€200 - 300





Lot 522

522 A FINE NORTH WEST PERSIAN WOOL CARPET,  
the rectangular fields centred with a red cartouche shaped medallion reserved on a pale blue ground, set with spandrels to each corner, all within a broad foliate border, 210 x 317cm

€800 - 1200



Lot 523

523 A FINE PERSIAN WOOL CARPET,  
the rectangular field woven with a geometric medallion in red cream and cream tones reserved on a navy ground and filled with dense foliate motifs, within broad geometric borders, 205 x 132 cm

€1000 - 1500



Lot 524

524 A LARGE PERSIAN WOOL RED GROUND CARPET,  
20th century, the rectangular field with central flowerhead medallion surrounded by dense foliate and feather filled overall design, the broad navy border woven with interlinked feathers and medallions, 347 x 237cm

€500 - 800



Lot 525

525 A FINE CAUCASIAN WOOL CARPET,  
20th Century, the central rectangular field tightly woven with alternating geometric lozenges, contained within a panelled border and narrow guard stripes, 208 x 134cm

€600 - 1000



Lot 526

526 A TURKOMAN WOOL CARPET  
20th Century, the central red ground woven with three interlinked octagonal medallions within multiple geometric and alternating borders, each end with flat-weave fringe, 182 x 123cm

€200 - 300

527 A COLLECTION OF THREE MODERN HALL RUNNERS,  
decorated in traditional designs, various sizes

€60 - 100



528

AN IRISH MINIATURE MAHOGANY CHEST OF FOUR LONG DRAWERS, ON STAND BY JAMES HICKS OF DUBLIN stamped on the top drawer "J. HICKS, 5 LR. PEMBROKE STREET", moulded top, the stand with shaped apron and cabriole legs, on pointed pad feet. 34cm deep, 49cm wide, 82.5cm high

James Hicks opened his workshop in 1894. Early furniture style reflected 18<sup>th</sup> century Palladian style featuring shells, laurel swags and large cabriole legs. Later works become more slender and classical in form. A consistent vein that ran through the works produced was quality Chippendale, Adams and Sheraton inspired styles of furniture. The craftsmanship was recognised by several awards, one of which was the Aonach Taitteann in 1928; and various famous commissions. The same year as the death of James Hicks, the President and Chairman of the New York World Trade Fair in 1939 sent a certificate to the Hick's firm conveying their appreciation of the substantial contribution made by the Hick's exhibit, which they felt led to the success of the fair.

€300 - 500

529

A GEORGIAN STYLE MAHOGANY FRAMED GAINSBOROUGH ARMCHAIR, 19<sup>th</sup> Century, of small proportions, with padded rectangular back seat and arm rests covered with floral upholstery, on squared supports and H-shaped stretcher

€400 - 500



530

A JAPANESE EBONISED LACQUER AND GILT METAL MOUNTED CABINET ON STAND, c.1900, the top with outscrolled moulding above twin cupboard doors decorated in traditional manner and enclosing an arrangement of short drawers, on an associated stand, 105cm high

€400 - 600



531

A NEAR PAIR OF MAHOGANY FRAMED TUB SHAPED CORNER CHAIRS, mid 19<sup>th</sup> century, each with matching green upholstered seats, on ring turned legs and blocked feet (2)

€200 - 300

532

A VICTORIAN STAFFORDSHIRE POTTERY STANDING FLATBACK FIGURE OF QUEEN VICTORIA, titled Queen of England. 43cm tall

€150 - 200

533

A PAIR OF CHINESE PORCELAIN BALUSTER VASES, converted to lamps, the white gourd decorated with floral sprays, 46cm tall

€300 - 500



# General Terms and Conditions of Business

The Auctioneer carries on business on the following terms and conditions and on such other terms or conditions as may be expressly agreed with the Auctioneer or set out in any relevant Catalogue. Conditions 12-21 relate mainly to buyers and conditions 22-32 relate mainly to sellers. Words and phrases with special meanings are defined in condition 1. Buyers and sellers are requested to read carefully the Cataloguing Practice and Catalogue Explanation contained in condition 2.

## DEFINITIONS AND GENERAL CONDITIONS

## GENERAL CONDITIONS

### Definitions

1. In these conditions the following words and expressions shall have the following meanings:

**'Auctioneer'** – James Adam & Sons.

**'Auctioneer's Commission'** – The commission payable to the Auctioneer by the buyer and seller as specified in conditions 13 and 25.

**'Catalogue'** – Any advertisement, brochure, estimate, price list or other publication.

**'Forgery'** – A Lot which was made with the intention of deceiving with regard to authorship, culture, source, origin, date, age or period and which is not shown to be such in the description therefore in the Catalogue and the market value for which at the date of the auction was substantially less than it would have been had the Lot been in accordance with the Catalogue description.

**'Hammer Price'** – The price at which a Lot is knocked down by the Auctioneer to the buyer.

**'Lot'** – Any item which is deposited with the Auctioneer with a view to its sale at auction and, in particular, the item or items described against any Lot number in any Catalogue.

**'Proceeds of Sale'** – The net amount due to the seller being the Hammer Price of the Lot after deducting the Auctioneer's Commission thereon under condition 25 the seller's contribution towards insurance under condition 26, such VAT as is chargeable and any other amounts due by the seller to the Auctioneer in whatever capacity howsoever arising.

**'Registration Form or Register'** – The registration form (or, in the case of persons who have previously attended at auctions held by the Auctioneer and completed registration forms, the register maintained by the Auctioneer which is compiled from such registration forms) to be completed and signed by each prospective buyer or, where the Auctioneer has acknowledged pursuant to condition 12 that a bidder is acting as agent on behalf of a named principal, each such bidder prior to the commencement of an auction.

**'Sale Order Form'** – The sale order form to be completed and signed by each seller prior to the commencement of an auction.

**'Total Amount Due'** – The Hammer Price of the Lot sold, the Auctioneer's Commission due thereon under condition 13, such VAT as is chargeable and any additional interest, expenses or charges due hereunder.

**'V.A.T.'** – Value Added Tax.

### Cataloguing Practice and Catalogue Explanations

2. Terms used in Catalogues have the following meanings and the Cataloguing Practice is as follows:

The first name or names and surname of the artist;  
*In the opinion of the Auctioneer a work by the artist.*

The initials of the first name(s) and the surname of the artist;  
*In the opinion of the Auctioneer a work of the period of the artist and which may be in whole or in part the work of the artist.*

The surname only of the artist;  
*In the opinion of the Auctioneer a work of the school or by one of the followers of the artist or in his style.*

The surname of the artist preceded by 'after';  
*In the opinion of the Auctioneer a copy of the work of the artist.*  
'Signed'/'Dated'/'Inscribed';  
*In the opinion of the Auctioneer the work has been signed/dated/inscribed by the artist.*

'With Signature'/'with date'/'with inscription';  
*In the opinion of the Auctioneer the work has been signed/dated/inscribed by a person other than the artist.*

'Attributed to';  
*In the opinion of the Auctioneer probably a work of the artist.*

'Studio of/Workshop of'  
*In the opinion of the Auctioneer a work executed in the studio of the artist and possibly under his supervision.*

'Circle of';  
*In the opinion of the Auctioneer a work of the period of the artist and showing his influence.*

'Follower of';  
*In the opinion of the Auctioneer a work executed in the artist's style yet not necessarily by a pupil.*

'Manner of';  
*In the opinion of the Auctioneer a work executed in artist's style but of a later date.*

'\*';  
*None of the terms above are appropriate but in the Auctioneer's opinion the work is a work by the artist named.*

### Auctioneer Acting as Agent

3. The Auctioneer is selling as agent for the seller unless it is specifically stated to the contrary. The Auctioneer as agent for the seller is not responsible for any default by the seller or the buyer.

### Auctioneer Bidding on behalf of Buyer

4. It is suggested that the interests of prospective buyers are best protected and served by the buyers attending at an auction. However, the Auctioneer will, if instructed, execute bids on behalf of a prospective buyer. Neither the Auctioneer nor its employees, servants or agents shall be responsible for any neglect or default in executing bids or failing to execute bids.

### Admission to Auctions

5. The Auctioneer shall have the right exercisable in its absolute discretion to refuse admission to its premises or attendance at its auctions by any person.

### Acceptance of Bids

6. The Auctioneer shall have the right exercisable in its absolute discretion to refuse any bids, advance the bidding in any manner it may decide, withdraw or divide any Lot, combine any two or more Lots and, in the case of a dispute, to put any Lot up for auction again.

### Indemnities

7. Any indemnity given under these conditions shall extend to all actions, proceedings, claims, demands, costs and expenses whatever and howsoever incurred or suffered by the person entitled to the benefit of the indemnity and the Auctioneer declares itself to be a trustee of the benefit of every such indemnity for its employees, servants or agents to the extent that such indemnity is expressed to be for their benefit.

### Representations in Catalogues

8. Representations or statements made by the Auctioneer in any Catalogue as to contribution, authorship, genuineness, source, origin, date, age, provenance, condition or estimated selling price or value is a statement of opinion only. Neither the Auctioneer nor its employees, servants or agents shall be responsible for the accuracy of any such opinions. Every person interested in a Lot must exercise and rely on their own judgment and opinion as to such matters.

9. The headings of the conditions herein contained are inserted for convenience of reference only and are not intended to be part of, or to effect, the meaning or interpretation thereof.

### Governing Law

10. These conditions shall be governed by and construed in accordance with Irish Law.

### Notices

11. Any notice or other communication required to be given by the Auctioneer hereunder to a buyer or a seller shall, where required, be in writing and shall be sufficiently given if delivered by hand or sent by post to, in the case of the buyer, the address of the buyer specified in the Registration Form or Register, and in the case of the seller, the address of the seller specified in the Sale Order Form or to such other address as the buyer or seller (as appropriate) may notify the Auctioneer in writing. Every notice or communication given in accordance with this condition shall be deemed to have been received if delivered by hand on the day and time of delivery and if delivered by post three (3) business days after posting.

### The Buyer

12. The buyer shall be the highest bidder acceptable to the Auctioneer who buys at the Hammer Price. Any dispute which may arise with regard to bidding or the acceptance of bids shall be settled by the Auctioneer. Every bidder shall be deemed to act as principal unless the Auctioneer has prior to the auction, acknowledged in writing that a bidder is acting as agent on behalf of a named principal.

### Commission

13. The buyer shall pay the Auctioneer a commission at the rate of 20%, **exclusive** of V.A.T..

### Payment

14. Unless credit terms have been agreed with the Auctioneer before the auction the buyer of a Lot shall pay to the Auctioneer within one (1) day from the date of the auction the Total Amount Due. Notwithstanding this, the Auctioneer may, in its sole discretion, require a buyer to pay a deposit of 25% of the Total Amount Due at the conclusion of the auction.

The Auctioneer may apply any payments received by a buyer towards any sums owing from that buyer to the Auctioneer on any account whatever regardless of any directions of the buyer or his agent in that regard whether express or implied.

The Auctioneer shall only accept payment from successful bidders in cash or by the bidder's own cheque. Cheques drawn by third parties, whether in the Auctioneer's favour or requiring endorsement, shall not be accepted.

### Reservation of Title

15. Notwithstanding delivery or passing of risk to the buyer the ownership of a Lot shall not pass to the

buyer until he has paid to the Auctioneer the Total Amount Due.

#### Collection of Purchases

16. The buyer shall at his own expense collect the Lot purchased not later than seven (7) days after the date of the auction but (unless credit terms have been agreed with the Auctioneer pursuant to condition 14) not before payment to the Auctioneer of the Total Amount Due.

The buyer shall be responsible for any removal, storage and insurance charges in respect of any Lot which is not taken away within seven (7) days after the date of the auction.

The purchased Lot shall be at the buyer's risk in all respects from the earlier of the time of collection or the expiry of one (1) day from the date of the auction. Neither the Auctioneer nor its employees, servants or agents shall thereafter be liable for any loss or damage of any kind howsoever caused while a purchased Lot remains in its custody or control after such time.

#### Packaging and Handling of Purchased Lots

17. Purchased Lots may be packed and handled by the Auctioneer, its employees, servants or agents. Where this is done it is undertaken solely as a courtesy to buyers and at the discretion of the Auctioneer. Under no circumstances shall the Auctioneer, its employees, servants or agents be liable for damage of any kind and howsoever caused to glass or frames nor shall the Auctioneer be liable for the errors or omissions of, or for any damage caused by, any packers or shippers which the Auctioneer has recommended.

#### Non-Payment or Failure to Collect Purchased Lots

18. If a buyer fails to pay for and/or collect any purchased Lot by the dates herein specified for payment and collection the Auctioneer shall, in its absolute discretion and without prejudice to any other rights or remedies it may have, be entitled to exercise one or more of the following rights or remedies without further notice to the buyer:

- (a) To issue court proceedings for damages for breach of contract;
- (b) To rescind the sale of that Lot or any other Lots sold to the buyer whether at that or at any other auction;
- (c) To resell the Lot or cause it to be resold whether by public auction or private sale. In the event that there is a deficiency between the Total Amount Due by the buyer and the amount received by the Auctioneer on such resale after deduction of any necessary expenses the difference shall be paid to the Auctioneer by the buyer. Any surplus arising shall belong to the seller.
- (d) To store (whether at the Auctioneer's premises or elsewhere) and insure the purchased Lot at the expense of the buyer.
- (e) To charge interest on the Total Amount Due at the rate of 2% over and above the base rate from time to time of Bank of Ireland or if there be no such rate, the nearest equivalent thereto as determined by the Auctioneer in its absolute discretion from the date on which payment is due hereunder to the date of actual payment.
- (f) To retain that Lot or any other Lot purchased by the buyer whether at the same or any other auction and release same to the buyer only after payment to the Auctioneer of the Total Amount Due.
- (g) To apply any sums which the Auctioneer received in respect of Lots being sold by the buyer towards settlement of the Total Amount Due.
- (h) To exercise a lien on any property of the buyer in the possession of the Auctioneer or whatever reason.

#### Liability of Auctioneer and Seller

19. Prior to auction ample opportunity is given for the inspection of the Lots on sale and each buyer by making a bid acknowledges that he has, by exercising and relying on his own judgment, satisfied himself as to the physical condition, age and Catalogue description of each Lot (including but not restricted to whether the Lot is damaged or has been repaired or restored). All Lots are sold with all faults and imperfections and errors of description. None of the seller, the Auctioneer nor any of their employees, servants or agents shall be responsible for any error of description or for the condition or authenticity of any Lot. No warranty whatsoever is given by the seller or Auctioneer or by any of their employees, servants or agents in respect of any Lot and any condition or warranty express or implied by statute or otherwise is hereby specifically excluded.

#### Forgeries

20. Any amount paid by a buyer in respect of a Lot which, if it is proved within three (3) years of the date of the auction at which it was purchased, to have been a Forgery shall be refunded to the seller subject to the provisions hereof, provided that:

- (a) The Lot has been returned by the buyer to the Auctioneer within three (3) years of the date of the auction in the same condition in which it was at the time of the auction together with evidence proving that it is a Forgery, the number of the Lot and the date of the auction at which it was purchased;
- (b) The Auctioneer is satisfied that the Lot is a Forgery and that the buyer has and is able to transfer good and marketable title to the Lot free from any third party claims;

FURTHER PROVIDED THAT the buyer shall have no rights hereunder if:

- (i) The description of the Lot in the Catalogue at the time of the auction was in accordance with the then generally accepted opinion of scholars or experts or fairly indicated that there was a conflict of such opinion;
- (ii) The only method of establishing at the time of the auction in question that the Lot was a Forgery would have been by means of scientific processes which were not generally accepted for use until after the date of the auction or which were unreasonably expensive or impractical.

The buyer's sole entitlement under this condition is to a refund of the actual amount paid by him in respect of the Lot. Under no circumstances shall the Auctioneer be liable for any damage, loss (including consequential, indirect or economic loss) or expense suffered or incurred by the buyer by reason of the Lot being a Forgery.

The benefit of this condition shall be solely and exclusively for the buyer and shall not be assignable. The buyer shall for the purpose of this condition be the person to whom the original invoice in respect of the sale of the Lot is made.

#### Photographs

21. The buyer authorises the Auctioneer at any time to make use of any photographs or illustrations of the Lot purchased by the buyer for such purposes as the Auctioneer may require.

### CONDITIONS WHICH MAINLY CONCERN THE SELLER

#### Auctioneer's Discretion

22. With regard to the sale of any Lot the Auctioneer shall have the following powers exercisable solely in the discretion of the Auctioneer:

- (i) To decide whether to offer any Lot for sale or not;
- (ii) To decide whether a particular Lot is suitable for sale by the Auctioneer and, if so, to determine which auction, the place and date of sale, the conditions of sale and the manner in which such sale should be conducted;
- (iii) To determine the description of any Lot in a Catalogue.
- (iv) To decide whether the views of any expert shall be obtained and to submit Lots for examination by any such experts.
- (v) To determine what illustration of a Lot (if any) is to be included in the Catalogue.

#### Seller's Warranty and Indemnity

23. The seller warrants to the Auctioneer and to the buyer that he is the true owner of the Lot or is legally authorised to sell the Lot on behalf of the true owner and can transfer good and marketable title to the Lot free from any third party claims. As regards Lots not held by the Auctioneer on its premises or under its control the seller warrants and undertakes to the Auctioneer and the buyer that the Lot will be available and in a deliverable state on demand by the Auctioneer or buyer. The seller shall indemnify the Auctioneer and the buyer or any of their respective employees, servants or agents against any loss or damage suffered by any of them in consequence of any breach of the above warranties or undertakings by the seller.

#### Reserves

24. Subject to the Auctioneer's discretion, the seller shall be entitled prior to the auction to place a reserve on any Lot. All reserves must be agreed in advance by the Auctioneer and entered on the Sale Order Form or subsequently be confirmed in writing to the Auctioneer prior to auction. This also applies to changes in reserves. A reserve may not be placed upon any Lots under IR€100 in value. The reserve shall be the minimum Hammer Price at which the Lot may be sold by the Auctioneer. A reserve once in place may only be changed with the consent of the Auctioneer. A commission shall be charged on the 'knock-down' bid for Lots which fail to reach the reserve price. Such commission shall be 5% of the 'knock-down' bid. This commission and any VAT payable thereon must be paid before removal of the Lot after the auction. The minimum commission hereunder shall be IR€25. The Auctioneer may in its sole discretion sell a Lot at a Hammer Price below the reserve therefore but in such case the Proceeds of Sale to which the seller shall be entitled shall be the same as they would have been had the sale been at the reserve.

Unless a reserve has been placed on a Lot in accordance with the provisions set out above such Lot shall be put up for sale without reserve.

In the event that any reserve price is not reached at auction then for so long as the Lot remains with the Auctioneer and to the extent that the Lot has not been re-entered in another auction pursuant to condition 31 the seller authorises the Auctioneer to sell the Lot by private treaty at not less than the reserve price. The Auctioneer shall ensure that in such a case those conditions herein which concern mainly the buyer shall, with any necessary modification, apply to such sale.

#### Commission

25. The seller shall pay the Auctioneer commission at the rate of 10% on the Hammer Price of all Lots sold on behalf of the seller at Irish Art Sales and 17.5% on the Hammer Price of all Lots sold on behalf of the seller at Fine Art, Wine and Militaria Sales together with V.A.T. thereon at the applicable rate. The seller authorises the Auctioneer to deduct from the Hammer Price paid by the buyer the Auctioneer's Commission under this condition; VAT payable at the applicable rates and any other amounts due by the seller to the Auctioneer in whatever capacity howsoever arising. The seller agrees that the Auctioneer may also receive commission from the buyer pursuant to condition 13.

#### Insurance

26. Unless otherwise instructed by the seller, all Lots (with the exception of motor vehicles) deposited with the Auctioneer or put under its control for sale shall automatically be insured by the Auctioneer under the Auctioneer's own fine arts policy for such sum as the Auctioneer shall from time to time in its absolute discretion determine. The seller shall pay the Auctioneer a contribution towards such insurance

by the Auctioneer, be sold for such amount. Such insurance shall subsist until such time as the Lot is paid for and collected by the buyer or, in the case of Lots sold which are not paid for or collected by the buyer by the due date hereunder for payment or collection such due date or, in the case of Lots which are not sold, on the expiry of seven (7) days from the date on which the Auctioneer has notified the seller to collect the Lots.

#### **Rescission of Sale**

27. If before the Auctioneer has paid the Proceeds of Sale to the seller the buyer proves to the satisfaction of the Auctioneer that the Lot sold is a Forgery and the requirements of condition 20 are satisfied the Auctioneer shall rescind the sale and refund to the buyer any amount paid to the Auctioneer by the buyer in respect of the Lot.

#### **Payment of Proceeds of Sale**

28. The Auctioneer shall remit the Proceeds of Sale to the seller not later than thirty (30) days after the date of the auction, provided however that, if by that date, the Auctioneer has not received the Total Amount Due from the buyer then the Auctioneer shall remit the Proceeds of Sale within seven (7) working days after the date on which the Total Amount Due is received from the buyer. If credit terms have been agreed between the Auctioneer and the buyer the Auctioneer shall remit to the seller the Proceeds of Sale not later than thirty (30) days after the date of the auction unless otherwise agreed by the seller.

If before the Total Amount Due is paid by the buyer the Auctioneer pays the seller an amount equal to the Proceeds of Sale then title to the Lot shall pass to the Auctioneer.

If the buyer fails to pay the Auctioneer the Total Amount Due within fourteen (14) days after the date of the auction, the Auctioneer shall endeavour to notify the seller and take the seller's instructions on the course of action to be taken and, to the extent that it is in the sole opinion of the Auctioneer feasible, shall endeavour to assist the seller to recover the Total Amount Due from the buyer provided that nothing herein shall oblige the Auctioneer to issue proceedings against the buyer in the Auctioneer's own name. If circumstances do not permit the Auctioneer to take instructions from the seller or, if after notifying the seller, it does not receive instructions within seven (7) days, the Auctioneer reserves the right, and is hereby authorised by the seller at the seller's expense, to agree special terms for payments of the Total Amount Due, to remove, store and insure the Lot sold, to settle claims made by or against the buyer on such terms as the Auctioneer shall in its absolute discretion think fit, to take such steps as are necessary to collect monies due by the buyer to the seller and, if necessary, to rescind the sale and refund money to the buyer.

#### **Payment of Proceeds to Overseas Sellers**

29. If the seller resides outside Ireland the Proceeds of Sale shall be paid to such seller in Irish Pounds unless it was agreed with the seller prior to the auction that the Proceeds of Sale would be paid in a currency (other than Irish Pounds) specified by the seller in which case the Proceeds of Sale shall be paid by the Auctioneer to the seller in such specified currency (provided that that currency is legally available to the Auctioneer in the amount required) calculated at the rate of exchange quoted to the Auctioneer by its bankers on the date of payment.

#### **Charges for Withdrawn Lots**

30. Once catalogued, Lots withdrawn from sale before proofing/publication of Catalogue will be subject to commission of 5% of the Auctioneer's latest estimate of the auction price of the Lot withdrawn together with VAT thereon and any expenses incurred by the Auctioneer in relation to the Lot. If Lots are withdrawn after proofing or publication of Catalogue they will be subject to a commission of 10% of the Auctioneer's latest estimate of the auction price of the Lot withdrawn together with VAT thereon and any expenses incurred by the Auctioneer in relation to the Lot. All commission hereunder must be paid for before Lots withdrawn may be removed.

#### **Unsold Lots**

31. Where any Lot fails to sell at auction the Auctioneer shall notify the seller accordingly and (in the absence of agreement between the seller and the Auctioneer to the contrary) such Lot may, in the absolute discretion of the Auctioneer, be re-entered in the next suitable auction unless instructions are received from the seller to the contrary, otherwise such Lots must be collected at the seller's expense within the period of thirty (30) days of such notification from the Auctioneer.

Upon the expiry of such period the Auctioneer shall have the right to sell such Lots by public auction or private sale and on such terms as the Auctioneer in its sole discretion may think fit. The Auctioneer shall be entitled to deduct from the price received for such Lots any sums owing to the Auctioneer in respect of such Lots including without limitation removal, storage and insurance expenses, any commission and expenses due in respect of the prior auction and commission and expenses in respect of the subsequent auction together with all reasonable expenses before remitting the balance to the seller. If the seller cannot be traced the balance shall be placed in a bank account in the name of the Auctioneer for the seller. Any deficit arising shall be due from the seller to the Auctioneer. Any Lots returned at the seller's request shall be returned at the seller's risk and expense and will not be insured in transit unless the Auctioneer is so instructed by the seller.

#### **Auctioneer's Right to Photographs and Illustrations**

32. The seller authorises the Auctioneer to photograph and illustrate any Lot placed with it for sale and further authorises the Auctioneer to use such photographs and illustrations and any photographs and illustrations provided by the seller at any time in its absolute discretion (whether or not in connection with the auction).

Catalogue illustrations are included at the discretion of the Auctioneer. Illustration charges will be calculated on the particular category of sale. These charges are subject to change. Irish Art Sale Illustrations: €150.00 full page, €100.00 half page, €50.00 other sizes. Fine Art Illustrations: Scaled fee: €100.00 for lots sold for €3,000.00 and over, hammer price, €50.00 for lots sold under €3,000.00 hammer price. All other sales: €25.00 per illustration. All lots illustrated and not sold are charged €25.00 per illustration.

#### **VAT**

34. It is presumed, unless stated to the contrary, that the items listed herein are auction scheme goods as defined in the Finance Act 1995.

#### **35. Artist's Resale Rights (Droit de Suite)**

Government Regulations (S.1. 312/2006)

Under this legislation a royalty (droit de suite) is payable to artists or the artist's heirs (if deceased in the last 70 years) of E.U. Nationality on all works resold for €3,000 or more, other than those sold by the artist or the artist's agent.

#### **The resale royalty payable is calculated as follows:**

From €3,000 to €50,000 4%  
From €50,000.01 to €200,000 3%  
From €200,000.01 to €350,000 1%  
From €350,000.01 to €500,000 0.5%  
Exceeding €500,000 0.25%

The total amount of royalty payable on any individual sale shall not exceed €12,500 The seller is liable for payment (paragraph 7.1 of Government Regulations (S.1. 312/2006) of this royalty on completion of the sale. The artist may request from the Auctioneer any information necessary to secure payment.

The Auctioneer will automatically deduct the amount due from the proceeds of sale and will hold in trust for the artist, their heirs or their representative for a period of 3 years from the date of sale. A vendor may choose to check the ARR Waiver on the Sale Receipt Contract indicating that they accept sole responsibility for the payment and authorises the Auctioneers to disclose their contact details to the artist, their heirs or their representative.

AUCTION WEDNESDAY 28TH MAY | 6PM

# IMPORTANT IRISH ART



WILLIAM CONOR RHA

*'BEERO'*

Est: €30,000 - €50,000

FROM THE DEEPWELL COLLECTION



ADAM'S Est 1887