

Fine Jewellery & Watches

Tuesday May 9th 2017 at 6pm



ADAM'S

Est 1887



PIPPA HOLT
KAFTANS

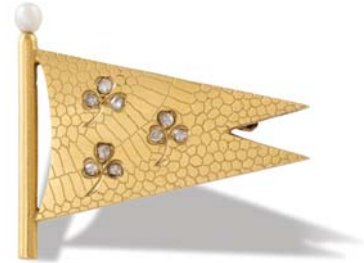
ADAM'S Est. 1887

AUCTION

Tuesday 9th May 2017 at 6pm

VENUE

Adam's Salerooms,
26 St. Stephen's Green, Dublin D02 X665,
Ireland



SALE VIEWING

MAY 6th - 9TH

At Adam's, 26 St. Stephen's Green Dublin D02 X665

Saturday 6 th May	1:00pm - 5 :00pm
Sunday 7 th May	1:00pm - 5 :00pm
Monday 8 th May	10:00am - 5:00pm
Tuesday 9 th May	10:00am - 4:00pm

ADAM'S Est. 1887

26 St. Stephen's Green
Dublin D02 X665
Tel +353 1 6760261
info@adams.ie
www.adams.ie



Bid online at our auctions through
the-saleroom.com

Online Bidding
powered by **invaluable**

IMPORTANT INFORMATION FOR PURCHASERS

1. ESTIMATES AND RESERVES

These are shown below each lot in this sale. All amounts shown are in Euro. The figures shown are provided merely as a guide to prospective purchasers. They are approximate prices which are expected, are not definitive and are subject to revision. Reserves, if any, will not be any higher than the lower estimate.

2. PADDLE BIDDING

All intending purchasers must register for a paddle number before the auction. Please allow time for registration. Potential purchasers are recommended to register on viewing days.

3. PAYMENT, DELIVERY AND PURCHASERS PREMIUM

Wednesday 10th May 2017. Under no circumstances will delivery of purchases be given whilst the auction is in progress. All purchases must be paid for and removed from the premises not later than Wednesday 10th May 2017 at the purchaser's risk and expense. After this time all uncollected lots will be removed to commercial storage and additional charges will apply.

Auctioneers commission on purchases is charged at the rate of 20% (exclusive of VAT). Terms: Strictly cash, bankers draft or cheque drawn on an Irish bank. Cheques will take a minimum of five working days to clear the bank, unless they have been vouched to our satisfaction prior to the sale, or you have a previous cheque payment history with Adam's. Purchasers wishing to pay by credit card (Visa & MasterCard) may do so, however, it should be noted that such payments will be subject to an administrative fee of 1.5% on the invoice total. American Express is subject to a charge of 3.65% on the invoice total. Debit cards including laser card payments are not subject to a surcharge, there are however daily limits on Laser card payments. Bank Transfer details on request. Please ensure all bank charges are paid in addition to the invoice total, in order to avoid delays in the release of items.

Goods will only be released upon clearance through the bank of all monies due. Artists Resale Rights (Droit de Suite) is NOT payable by purchasers.

4. VAT REGULATIONS

All lots are sold within the auctioneers VAT margin scheme. Revenue Regulations require that the buyers premium must be invoiced at a rate which is inclusive of VAT. This is not recoverable by any VAT registered buyer.

5. It is up to the bidder to satisfy themselves prior to buying as to the condition of a lot. Whilst we make certain observations on the lot, which are intended to be as helpful as possible, references in the condition report to damage or restoration are for guidance only and should be evaluated by personal inspection by the bidder or a knowledgeable representative. The absence of such a reference does not imply that an item is free from defects or restoration, nor does a reference to particular defects imply the absence of any others. The condition report is an expression of opinion only and must not be treated as a statement of fact.

Please ensure that condition report requests are submitted before 12 noon on Tuesday 9th May as we cannot guarantee that they will be dealt with after this time.

6. ABSENTEE BIDS

We are happy to execute absentee or written bids for bidders who are unable to attend and can arrange for bidding to be conducted by telephone. However, these services are subject to special conditions (see conditions of sale in this catalogue). All arrangements for absentee and telephone bidding must be made before 5pm on the day prior to sale. Cancellation of bids must be confirmed before this time and cannot be guaranteed after the auction as commenced.

Bidding by telephone may be booked on lots with a minimum estimate of €500. Early booking is advisable as availability of lines cannot be guaranteed.

7. ALL LOTS ARE BEING SOLD UNDER THE CONDITIONS OF SALE AS PRINTED IN THIS CATALOGUE AND ON DISPLAY IN THE SALEROOMS.

CONTACTS AT ADAMS FOR THIS AUCTION



Claire-Laurence Mestrallet G.G
HEAD OF JEWELLERY
Claire@adams.ie



Amy McNamara BA
FINE ART DEPARTMENT
amymcnamara@adams.ie



Katie McGale BComm Intl MPhil
FINE ART DEPARTMENT
katie@adams.ie



Helena Carlyle
ADMINISTRATOR
h.carlyle@adams.ie



Niamh Corcoran
ADMINISTRATOR
niamh@adams.ie



Pippa Holt



Dublin based former British Vogue Stylist and Founder of Pippa Holt Kaftans, Pippa Holt was born in Melbourne, Australia. She gained her Bachelor of Arts Degree in Fashion Design from RMIT University in Melbourne.

At twenty-one she joined the Fashion Department of Vogue Australia. She left as 'Junior Fashion Editor' three years later to move to London at the age of 23. Pippa began her career in the UK Fashion Industry with her first job in London working in the Browns Press Office, the Boutique on South Molton Street. A year later Pippa became 'Head of Press' for fashion label Whistles. After two years of PR she wanted to return to styling and joined The Times newspaper as Fashion Stylist. Pippa remained here for three years. She then became Fashion Editor of The Saturday Times Magazine.

In 2006 she joined British Vogue as Fashion Features Associate. Five years later she met her Irish husband and moved to Dublin. She continued to work for Vogue there as a Contributing Editor for four years. In this time the family also spent a year in Texas. Pippa launched her kaftan range in 2016. She currently lives in Dublin with her husband and three children, Bay, Atticus and Balthazar. (@pippa_holt_kaftans)

A handwritten signature in black ink, appearing to read 'Pippa Holt'.



88



48

Lot 7: “A classic brooch that is like the dream ‘staple’ for any considered jewelry wardrobe. Chic to add to any outfit and could even be fastened to hair on a ponytail!”

Lot 11: “This piece reminds of a set of pearls my grandmother left me, given to her on an official visit to Paris when she was married to Australia’s Prime Minister Harold Holt, so they have an emotional pull. I think they are incredibly elegant and would be great worn casually in a ‘dressed down’ way”.

Lot 48: “Such a fun pair of earrings that feel ‘far-flung’. They’d compliment anything in my wardrobe as the green really ‘pops’. I’m drawn to this pair of earrings’ perfect shade of green and their Oriental exoticism”.

Lot 88: “A breathtaking, stand-out piece that once you put on, you never want to take off. I fell deeply in love with this ring and the fabulous, yellow statement it made”.

Lot 122: “Onyx has always been on my wish-list. This is a pretty piece and i was first drawn to in on @clm_adams_auctioneers instagram account. I’d like to layer it with the classic ‘tennis bracelet’ also in the auction (lot 29) , and colourful string bracelets found on holiday. It is a great piece to ‘stack”.

Lot 133: “I love this necklace and it was the first thing i was drawn to when I was shown the Adams trays of jewellery. I’d wear it all year round. In summer with a kaftan in the sun and in winter under a white shirt or over a jewell coloured sweater. I love a pop of colour that is as equally fun as it is luxurious”.

Lot 200: “This is a wonderful ring and i kept thinking about it after i tried it on. It’s classic but cool and ageless - it would suit a twenty year old or seventy year old. Perfect with a white t-shirt and jeans. I love its simplicity”.



133



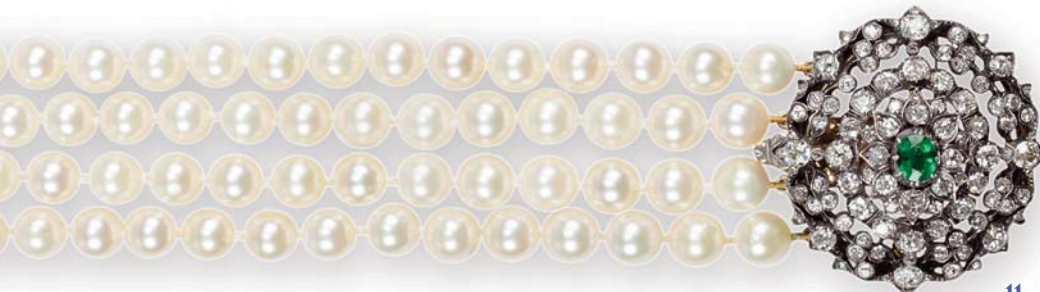
122



200



7



11

1

A LATE 19TH CENTURY DIAMOND FLOWER BROOCH, CIRCA 1880

Of flowerhead design, the central old cushion-shaped diamond issuing two sprays of furled petals set throughout with graduated old round, cushion and rose-cut diamonds, *mounted in silver and gold, the principal diamond weighing approximately 1.30cts, the remaining diamonds weighing 6.00cts total, length approximately 4cm*

€ 4,500 - 6,500

3

A SPINEL AND DIAMOND CLUSTER RING

The oval-shaped pink spinel, weighing approximately 2.00cts, within an old brilliant-cut diamond surround and single-cut diamond shoulders, *mounted in 14K gold, diamonds approximately 0.60ct total, ring size M*

€ 4,000 - 5,000

Accompanied by a report from GCS laboratory in London, stating that the pink spinel weighing approximately 2.00cts, is natural, with no indications of heating (treatment).

5

A PAIR OF DIAMOND AND ONYX EARRINGS

Each circular-shaped disc set with old brilliant-cut diamonds interspersed with onyx detail, within a border of millegrain setting, *diamonds approximately 3.20cts total, diameter 2cm*

€ 3,000 - 4,000

2

A THREE-ROW PEARL NECKLACE WITH DIAMOND CLASP

The strands of 7.49mm-9.70mm cultured pearls, to a pierced geometric clasp set with old brilliant-cut diamonds, *diamonds approximately 1.70cts total, length of shortest strand approximately 50.5cm, length of clasp 2.2cm*

€ 2,000 - 3,000

4

A LATE VICTORIAN OPAL RING

Set with five oval-shaped opal cabochons, with rose-cut diamond accents, the openwork scroll detailing gallery to a plain hoop, *mounted in gold, ring size M½*

€ 500 - 800

6

A DIAMOND SINGLE-STONE RING

The round brilliant-cut diamond within a four-claw setting, weighing approximately 0.95ct, between single-cut diamond shoulders, *mounted in platinum, ring size K½*

€ 2,000 - 3,000





5



2



1



6



3



4

7

**A DIAMOND STAR PENDANT/BROOCH,
CIRCA 1890**

Designed as a radiating star with knifewire bars, set with old brilliant, cushion and rose-cut diamonds to a similarly-cut diamond bale, *mounted in silver and gold, diamonds approximately 4.80cts total, detachable brooch fitting, in fitted case, length 5cm*

€ 2,000 - 4,000



8

**A PAIR OF 19TH CENTURY DIAMOND
PENDENT EARCLIPS**

Of girandole design, each rose-cut diamond surmount, suspending three foliate pendants set with similarly-cut diamonds, *mounted in silver and gold, French import marks, length 4.5cm, later converted to clip fittings*

€ 2,500 - 3,000

9

AN ANTIQUE SAPPHIRE AND DIAMOND BROOCH, CIRCA 1880

Centring a cushion-shaped sapphire, weighing approximately 3.90cts, within an openwork scroll design, set with old cushion, round and rose-cut diamonds, *mounted in silver and gold, diamonds approximately 2.50cts total, width 3.4cm*

€ 4,000 - 5,000

Accompanied by a report from the SSEF laboratory in Switzerland, stating that the sapphire weighing approximately 3.9cts, is Sri Lankan origin, with no indications of heating (treatment), report number 79912, dated April 29th 2015

10

**A VICTORIAN DIAMOND AND ENAMEL
LOCKET PENDANT**

The oval pendant set to the centre with a blue enamel and rose-cut diamond star motif within a beaded surround, *length 5.5cm*

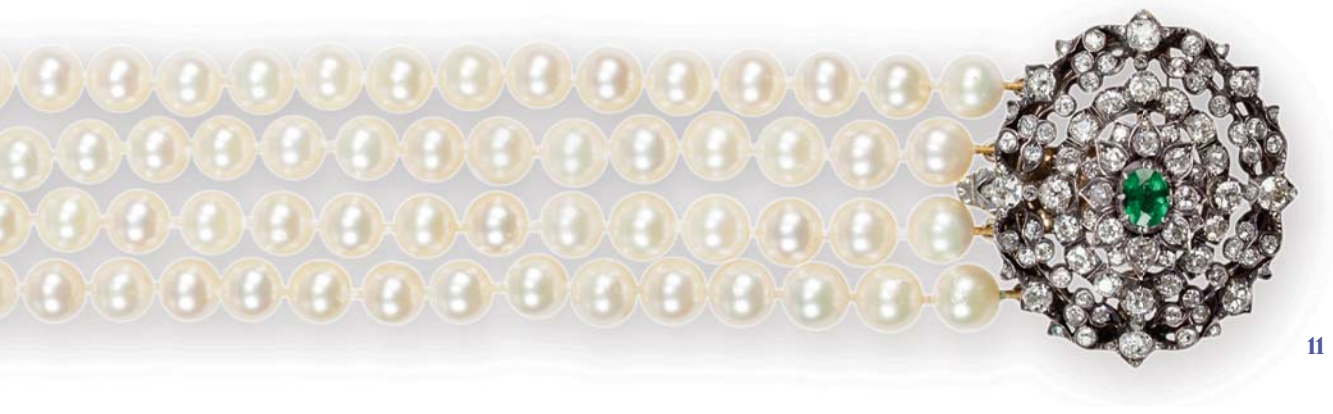
€ 200 - 400

11

**A CULTURED PEARL CHOKER NECKLACE
WITH A LATE 19TH CENTURY DIAMOND
AND EMERALD CLASP**

Composed of four rows of 7.96-8.48mm white-cream cultured pearls, to a flowerhead clasp set to the centre with an oval-shaped emerald, within an old brilliant, cushion and rose-cut diamond surround, *mounted in silver and gold, diamonds approximately 4.50cts total, length of choker approximately 35cm, clasp length 4.3cm, with 9 extra loose pearls*

€ 4,000 - 6,000



11



10



8



7



9



12

AN ART DECO AQUAMARINE AND DIAMOND PENDANT ON CHAIN, CIRCA 1930

The rectangular step-cut aquamarine weighing approximately 36.00cts, within a surround of geometric design, set with round brilliant and single-cut diamonds with millegrain detail, to a cable-link chain, mounted in 14K gold, diamonds approximately 0.60ct total, pendant length (including bale): 4.3cm

€ 3,500 - 4,500

13

AN EARLY 20TH CENTURY DIAMOND PANEL RING

Of pierced geometric design, millegrain-set with old brilliant, single and rose-cut diamonds and similarly-cut diamond shoulders, principal diamond weighing approximately 0.60ct, remaining diamonds weighing approximately 0.90ct total, ring size M $\frac{3}{4}$

€ 1,000 - 1,500

14

A DIAMOND BRACELET

Of geometric design set throughout with round brilliant-cut diamonds, mounted in 18K gold, diamonds approximately 3.20cts total, length 18.3cm

€ 1,500 - 2,000

15

A DIAMOND PLAQUE BROOCH, CIRCA 1935

The large openwork brooch finely pierced and set with brilliant, single and baguette-cut diamonds, mounted in platinum, diamonds approximately 6.50cts total, French assay mark, length 6.4cm

€ 3,500 - 4,500



12



13



15



14



16

A TOURMALINE AND GOLD BROOCH, BY H. STERN, CIRCA 1970

The brooch of gold openwork panel of abstract textured design, set with a central bi-coloured tourmaline, accompanied with a ring of similar design, *mounted in 18K gold, signed with maker's marks, brooch length approximately 5cm, ring size K*

€ 1,000 - 1,500

A German emigrant, Hans Stern (1922-2007) founded H. Stern whilst living in Brazil in 1945, at just 23 years old. While working as a typist for a trading company he fell in love with precious gemstones and began a small-scale gemstone trading office in Rio de Janeiro; This trading office quickly developed into gemstones cutting and jewellery manufacturing. By 1964, the company became renowned for the creation and promotion of interest in colour gemstones internationally. Hans Stern was hailed as 'the king of coloured stones' by Time Magazine. He was also the only Latin American brand to participate in Victoria and Albert Museum jewellery exhibition. It was, however, the 1980's launch of the Catherine Deneuve collection, inspired by the muse of Brunel's 'Belle du Jour', which catapulted H. Stern's successor and his brand to success and led his brand to win numerous design awards. H. Stern soon became the jeweller of the stars with his pieces making regular appearances on Hollywood red carpets. H. Stern is currently the biggest jeweller in Brazil and Latin America, so much so that top fashion editorials such as Vogue, Elle, Marie-Claire and Harper's Bazaar have all featured H. Stern creations. Today Ronaldo and Roberto Stern, the sons of Hans Stern, carry on their father's legacy, continuing to push the boundaries of jewellery design and share their love and appreciation for precious gemstones.

18

A DIAMOND DRESS RING, CIRCA 1970

Of bombé design, set as an openwork cluster of brilliant-cut diamonds, within a textured surround, *mounted in gold, diamonds approximately 0.30ct total, ring size L¾*

€ 400 - 600

20

A DIAMOND AND GOLD RING, BY CHARLES DE TEMPLE, CIRCA 1965

Of textured abstract design, the bi-coloured gold band set with single-cut diamonds within collet mounts, mounted in 18K gold, maker's mark 'C de T', ring size O

€ 700 - 1,200

Charles de Temples was a contemporary of Andrew Grima, and amongst others they heralded the idea of individually designed jewellery being available in the mainstream. He is famed for creating the Goldfinger for the Bond film of the same name.

14

17

A GOLD, TURQUOISE AND DIAMOND ABSTRACT BRACELET, CIRCA 1970

Of textured bark design, accented by oval-shaped turquoise cabochons and round brilliant-cut diamonds, *mounted in 18K gold, maker's mark 'M', length approximately 19cm*

€ 2,500 - 3,500



18

19

AN AQUAMARINE AND ENAMEL PENDANT NECKLACE

The rectangular-cut aquamarine, weighing approximately 27.00cts, within a frame of brown enamel, suspending from a fancy-link chain, *chain mounted in 9K gold, pendant length 2.9cm, necklace length 45.4cm*

€ 2,500 - 3,500

21

A LADY'S 18K GOLD WATCH WITH LAPIS LAZULI DIAL, BY PIAGET, CIRCA 1970

Of manual wind movement, 18 jewels, lapis lazuli dial, oval-shaped case, back secured by two screws, on a textured 18K yellow gold integral bracelet, case, dial and movement signed, movement no: 7799150, Swiss assay mark, case serial no: 98120 N 17, ref no: 258776, width (including bezel & crown): 3.8cm, overall length of bracelet 16.8cm

€ 2,000 - 4,000



16



19



20



17



21

22

A GOLD CHARM BRACELET

The fancy-link chain bracelet, suspending six charms, including an iron, a sledge, a kettle etc. . . , mounted in 18K gold, French assay marks, length approximately 17.5cm, total weight 16.03g

€ 300 - 500



24

AN EMERALD AND DIAMOND RING

Of marquise-shape, set centrally with two pear-shaped emeralds, each within a surround of single-cut diamonds, to similarly-cut diamond shoulders, mounted in gold, diamonds approximately 0.20ct total, ring size L½

€ 1,000 - 1,500

26

A GOLD BRACELET SET WITH A HEART-SHAPED PADLOCK

The curb-link bracelet, with a heart-shaped padlock clasp, mounted in 9K gold, with maker's mark 'J.G & S', weight approximately 44.75g

€ 400 - 600

23

A CITRINE AND GOLD PENDANT ON CHAIN, BY RUDOLF HELTZEL, CIRCA 1978

The central round-shaped citrine, within a surround of alternate polished wavy and straight rays, to a link and bar-chain, mounted in 18K gold, with maker's mark 'RH', hallmarked Dublin 1978, pendant length 5.7cm, chain length 53cm

€ 600 - 800

In 1966 the celebrated jewellery designer, left his native Berlin for Ireland, settling in Kilkenny where he established his own family run workshop. Hetzel was invited by the Irish Export Board and set about organising studio workshops for training in techniques of working with both gold and silver.

His career spans six decades, encompassing a multi-disciplined approach of traditional forms of hand-carved production alongside innovations in the technology of design. There is a strong distinctive design process to his work - combining precious gemstones with metal - his pieces take on an almost abstract sculptural aesthetic. However, jewellery design, by its very nature comes from a living, physical material and as an item to be worn; it should be functional and complementary to the wearer.

Hetzel's jewellery, no matter how diverse in its original inspiration is always distinctly recognisable. Since the beginning of his career in Ireland, Hetzel has always been interested in sharing his knowledge and experience. His long-standing position within the Irish craft market has allowed him to establish training opportunities for jewellery makers dedicated to keeping ancient traditional skills alive.

25

A DIAMOND RING

The heart-shaped diamond, within a five-claw setting, with similarly-cut diamond shoulders and a baguette-cut diamond surround, mounted in 18K gold, diamonds approximately 2.10cts total, ring size N

€ 1,500 - 2,000

27

A DIAMOND SINGLE-STONE RING

The round brilliant-cut diamond weighing approximately 0.50ct, between single-cut diamond shoulders, mounted in 18K gold and platinum, remaining diamonds approximately 0.15ct total, ring size M

€ 400 - 600



22



23



24



27



25

28

A FINE LADY'S PLATINUM AND DIAMOND BRACELET WATCH, BY ROLEX, CIRCA 2002 (OYSTER PERPETUAL DATEJUST)

31-jewel Cal. 2235 automatic movement, adjusted to 5 positions and temperature, silvered grey dial with applied square-cut diamond filled hour markers, white metal baton hands and running seconds, magnified date aperture at 3, brushed and polished, screw down Oyster crown, diamond-set bezel, *fitted Rolex bracelet with deployant clasp, case, dial and movement signed, serial no. K599861, ref. no: 179136, case width (including crown): 2.9cm*

€ 10,000 - 15,000

30

A DIAMOND SINGLE-STONE RING

The round brilliant-cut diamond, within a four-claw setting, weighing approximately 2.00cts, between three rows of graduating round and baguette-cut diamond shoulders, *mounted in 18K gold, remaining diamonds approximately 1.28cts, ring size M*

€ 8,000 - 12,000

32

A DIAMOND HALF-ETERNITY RING

Set with a uniform row of twelve round brilliant-cut diamonds, to a plain hoop, *mounted in platinum, diamonds approximately 0.75ct total, with maker's mark B&N, ring size M½*

€ 400 - 600

29

A DIAMOND LINE BRACELET

The articulated bracelet, set with a continuous row of round brilliant-cut diamonds, each within a four-claw setting, *mounted in 18K gold, diamonds approximately 3.80cts, length 17cm*

€ 2,000 - 3,000

31

A PAIR OF DIAMOND PENDENT EARRINGS

Each composed of five graduated concentric hoops set throughout with brilliant-cut diamonds, suspended from a pear-shaped brilliant-cut diamond surmount, *mounted in 18K gold, diamonds approximately 2.50cts total, French import marks, length 5.8cm*

€ 3,200 - 3,800

33

A FIVE-STONE SAPPHIRE RING

The five square step-cut sapphire, each within a four-claw setting, *mounted in 18K gold, sapphires approximately 3.52cts total, ring size L*

€ 500 - 800





28



31



30



32



33



29

34

A FINE PLATINUM BRACELET WATCH, BY ROLEX, CIRCA 2002
(OYSTER PERPETUAL DAY-DATE)

31-jewel Cal. 3155 automatic movement, silver circular dial with raised Roman numerals, aperture for day at noon and date at 3, polished hands, screw back case with polished bezel and screw down crown, platinum bracelet with deployant clasp (additional bracelet link fitted), *case, dial and movement signed, serial no. P905309, ref. no: 118206, width (including crown): 3.7cm, with fitted box & papers.*

€ 15,000 - 25,000


ROLEX
GENÈVE



Serial Number: P

INTERNATIONAL SERVICE

Model Number : 118206

Invoice Number : D08267

Date of Overhaul: 26/OCT/

This watch has undergone a complete overhaul and its
functioning is guaranteed for a full 2 years or 100,000 hours
of operation, whichever is the longest, against any
deterioration due to accident or mishap, provided there
is no intervention by a non-authorized person or the
addition of any non-authentic Rolex accessories.

ROLEX UK
Service Division

118206

ATTESTATION
DE CHRONOMETRE
OFFICIEL


ROLEX
GENÈVE





35

A STAINLESS STEEL 'MR ARPELS' MANUAL WIND BRACELET WATCH, BY VAN CLEEF & ARPELS, CIRCA 2010

21-jewelled manual winding movement, 42 hour autonomy, white lacquer dial with 4 hour indexes with Roman numerals and baton markers, silver sword hands, subsidiary seconds between 4 and 5, side window at 9 indicating power reserve, water-resistant up to 3 ATM, original leather strap with folding clasp and integrated security system, case and dial signed, *VCA movement based on Swiss mechanical movement, ref no: HH3341, serial no: 52095, case width (including crown): 4.2cm, with maker's case*

€ 1,200 - 2,200



36

A MOTHER-OF-PEARL AND DIAMOND 'ROSE DE NOEL' PENDANT/BROOCH, BY VAN CLEEF & ARPELS

The flowerhead of carved and polished grey mother-of-pearl petals with brilliant-cut diamond pistils and polished stamens, suspending from a fine trace-link chain, *mounted in 18K gold, diamonds approximately 0.40ct total, signed VCA, maker's mark, French assay mark, pendant length 3.1cm*

€ 6,000 - 8,000



37

A DIAMOND ETERNITY RING

Composed of a continuous row of round brilliant-cut diamonds, each within a four-claw setting, mounted in 18K gold, diamonds approximately 2.20cts total, Italian assay mark, ring size M

€ 2,200 - 2,800

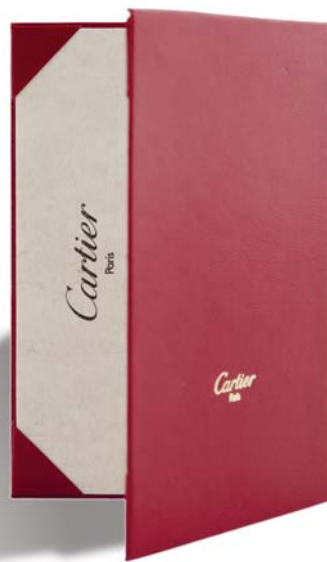


38

A GOLD AND DIAMOND 'B.ZERO' BANGLE, BY BULGARI

The inner hoop set with a line of brilliant-cut diamonds between gold borders, both sides of the bangle engraved 'Bulgari', mounted in 18K gold, signed inside hoop Bulgari, Italian assay mark

€ 4,000 - 6,000



39

**A FINE LAPIS LAZULI, CULTURED PEARL AND DIAMOND NECKLACE, BY CARTIER
CIRCA 1986**

Designed as a line of carved lapis lazuli beads, alternating with cultured pearls and gold spacers, the clasp pavé-set with brilliant-cut diamonds, *mounted in 18K gold, signed Cartier, numbered, French assay mark, maker's mark, case stamped Cartier, accompanied with certificate of authenticity, length approximately 82cm*

€ 25,000 - 35,000





40

**AN 18K GOLD AUTOMATIC WATCH,
BY GÜBELIN, CIRCA 1960**

Automatic movement, two tones dial with applied alternate gilt Arabic numerals and dot hour markers, sword hands with sweep centre seconds, *Swiss assay mark, leather strap, gilt buckle, case width (including crown): 3.5cm*

€ 300 - 500



41

**AN 18K 'MEMOVOX' AUTOMATIC ALARM
WRISTWATCH, BY JAEGER-LECOULTRE,
CIRCA 1960**

Automatic movement, silvered dial with applied gilt baton markers, baton hands and centre seconds, inner revolving alarm indicator disk, date aperture, circular case with gold upper, dial signed, *serial no: 903401, Swiss assay mark, diameter including crowns 3.6cm*

€ 1,200 - 2,200



42

**A GOLD AND SAPPHIRE COMPACT,
BY BOUCHERON**

Of rectangular form, with bi-coloured gold reeded detail to the outside, the thumbpiece set with five baguette-cut sapphires, *mounted in Gold, signed Boucheron Paris, length 8.4cm, width 5.5cm*

€ 2,000 - 2,500



43

**AN 18K GOLD 'TANK LOUIS' RECTANGULAR
WRISTWATCH, BY CARTIER**

Quartz movement, white dial with black Roman numerals with secret signature at 7, blue steel hands, with sapphire cabochon winding crown, case back secured by 4 screws, case, dial, and movement signed, Swiss assay mark, maker's mark, yellow stainless steel Cartier deployant buckle, Cartier leather strap, *ref no. 810523417 case width (including crown): 2.5cm, with Cartier case, serviced in November 2016 accompanied with service invoice*

€ 2,000 - 3,000



44

**TWO CULTURED PEARL AND GOLD NECKLACES,
BY SEAMAN SCHEPPS**

Each composed of a single strand of baroque-shaped cultured pearls, each interspersed by three oval-shaped gold links, mounted in 18K gold, with maker's mark, lengths approximately 54cm & 46cm

€ 2,500 - 3,500

* Please note that the two necklaces can be clipped together to be worn as one long necklace



45

**A PAIR OF CULTURED PEARL AND DIAMOND
PENDENT EARRINGS**

Each formed as a flowerhead, set centrally with a single-cut diamond, the petals set throughout with similarly-cut diamonds, suspending a cultured pearl drop of grey tint, with a further single-cut diamond surmount, diamonds approximately 0.35ct total, length 3.9cm

€ 700 - 900

46

AN OPAL AND DIAMOND DRESS RING

The oval cabochon opal weighing approximately 14.50cts, in a four-claw setting, between round brilliant-cut diamond shoulders with millegrain detail, mounted in 18K gold, diamonds approximately 0.60ct total, ring size L½

€ 2,000 - 3,000



47

A DIAMOND DRESS RING

Of bombé style, pavé-set with round brilliant-cut diamonds to the front and gallery, mounted in 18K gold, diamonds approximately 1.80cts total, ring size L½

€ 800 - 1,000



48

A PAIR OF CARVED JADEITE JADE AND DIAMOND PENDANT EARRINGS

Each pear-shaped jadeite jade plaque finely carved to depict openwork floral motifs, measuring approximately 32 x 20 x 1.07mm, highlighted with brilliant-cut diamonds and suspending from brilliant and baguette-cut diamond accents, mounted in 18K gold, diamonds approximately 1.20cts total, length 5.2cm

€ 2,000 - 3,000



49

A CULTURED PEARL NECKLACE WITH DIAMOND CLASP

Composed of one strand of graduating round-shaped South Sea pearls measuring 10.55-13.83mm, to a bi-coloured gold and diamond clasp, maker's mark, length 47.5cm, in case by 'Hans Hanse, Denmark'

€ 2,500 - 3,500

50

A PAIR OF DIAMOND AND CULTURED PEARL PENDENT EARRINGS

Each cultured pearl measuring approximately 12.09mm suspended from two geometric links, set with single-cut diamonds, diamonds approximately 1.00ct total, length 5.2cm

€ 1,200 - 1,600



54

51

A RUBY AND DIAMOND DRESS RING

The circular-cut ruby within a wreath surround of round brilliant-cut diamonds, mounted in 14K gold, diamonds approximately 0.70ct total, ring size N³/₄

€ 800 - 1,000

52

A PAIR OF RUBY AND DIAMOND CLUSTER EARRINGS

Each oval-shaped ruby, within a cluster of round brilliant-cut diamonds, diamonds approximately 0.60ct total, length 1.5cm

€ 1,000 - 1,500

53

A SAPPHIRE AND DIAMOND RING

Of Art Deco style, the rectangular step-cut sapphire, within a six-claw setting, between square-cut diamond shoulders, mounted in platinum, diamonds approximately 0.30ct total, ring size M

€ 800 - 1,000

54

A SAPPHIRE AND DIAMOND BANGLE

The hinged bangle set to the front with a graduated row of cushion-shaped sapphires with rose-cut diamond accents, mounted in gold, inner diameter approximately 5.8cm

€ 1,500 - 2,000



52

49



50



53



51

55

AN ART NOUVEAU DIAMOND BROOCH, CIRCA 1900

Of stylised foliate design, the scrolls set throughout with old round brilliant and rose-cut diamonds and terminating in three larger old round brilliant-cut diamonds, *mounted in silver and gold, diamonds approximately 1.80cts total, width 3.3cm*

€ 800 - 1,000

56

AN EARLY 20TH CENTURY MULTI GEM-SET FRINGE NECKLACE

Composed of a tubular-link chain, suspending twenty-one graduating oval and cushion-shaped multi colour gemstones, *mounted in gold, length approximately 40cm*

€ 3,600 - 4,600

According to the present owner's insurance valuation report, the stones have been assessed and identified to be (from left to right): a purple spinel, a red garnet, a yellow zircon, a blue spinel, an orange zircon, a red garnet, a blue zircon, a white sapphire, a red garnet, a green zircon, a blue sapphire, a yellow zircon, a red garnet, a white topaz, an orange zircon, a red garnet, a purple spinel; Estimated total topaz weight: 2.5cts, sapphire weight 11.8cts, spinel weight 4.1cts, garnet weight 11.35cts and estimated total zircon weight 23.2cts - yellow metal unmarked and has been tested as 18K gold

59



57

A SAPPHIRE AND DIAMOND BROOCH

The five graduated round-shaped sapphires, each within a single-cut diamond surround, to a pierced gallery, *mounted in gold, length 3.3cm, in fitted case by 'Henry Tessier, Court Jeweller, 1049 Mount St., Grosvenor square'*

€ 600 - 800

58

A SAPPHIRE NEGLIGÉ PENDANT NECKLACE

The cushion-shaped sapphire, weighing approx. 6.20cts, suspending two knife-edge bars of unequal length, each terminating with an oval-shaped sapphire weighing approximately 2.80 & 2.30cts, *mounted in gold, approximately 46cm, pendant 4.2cm*

€ 2,500 - 3,500

59

AN EARLY 20TH CENTURY AMETHYST AND DIAMOND PENDANT ON CHAIN, CIRCA 1900

The cushion-shaped amethyst, weighing approximately 23.00cts, within a rose-cut diamond openwork frame, to a similarly-cut diamond bale, *mounted in silver and gold, length 3.4cm, on later trace-link chain*

€ 800 - 1,200

60

A DIAMOND DRESS RING

The openwork lozenge-shaped plaque, centrally-set with a trio of round brilliant-cut diamonds, within millegrain setting, to a surround of single-cut diamonds, *diamonds approximately 0.50ct total, ring size P½*

€ 600 - 800



56



58



55



57



60



61

**A PAIR OF ANTIQUE PEARL AND DIAMOND
EAR PENDENTS, CIRCA 1870**

Each old cushion-cut diamond within a frame of rose-cut diamonds and seed pearls, suspending hemispherical bead details, terminating with a pearl, *mounted in 18K gold, French assay marks, maker's mark GG, length 4.3cm*

€ 500 - 800



62

**A MID-VICTORIAN OPAL AND ENAMEL CROSS
PENDANT NECKLACE, CIRCA 1860**

The blue enamel cross set with six white opals, suspended from a similarly-set fluttering ribbon bow surmount, with a fox-tail gold chain, *length approximately 42cm, with fitted case*

€ 1,200 - 2,200



63

**AN EARLY 20TH CENTURY ENAMEL, RUBY
AND GILT BOX, BY FABERGÉ
TOGETHER WITH A SILVER AND MOTHER-
OF-PEARL PILLBOX**

The pale yellow guilloché enamel round box, the lid centred with a cabochon ruby, opening at hinged lid to reveal gilt interior and a mirror, work master's mark *H.W* for Henrik Wigström, 'Fabergé' signature in Cyrillic, diameter 4cm; together with a silver and mother-of-pearl pillbox, depicting an Asian scenery

€ 1,000 - 1,500



64

**AN EARLY 20TH CENTURY AQUAMARINE
AND DIAMOND BROOCH, RUSSIAN, 1908-1926**

The central oval-shaped aquamarine collet-set within a rose-cut diamond surround, between extended three-tiered similarly-cut diamond terminals, mounted in silver and gold, Russian assay marks, with maker's marks in Cyrillic 'FL', length 6.1 cm

€ 800 - 1,200



65

A DIAMOND RING, BY TIFFANY & CO.

Of geometric openwork design, set with round brilliant-cut diamonds throughout, mounted in platinum, diamonds approximately 1.70cts total, signed Tiffany & Co., ring size M

€ 3,500 - 4,000



66

A CULTURED PEARL NECKLACE

The cable-link chain spaced by Tahitian cultured pearls, mounted in 14K gold, length 45cm

€ 700 - 1,000





67

A CULTURED PEARL NECKLACE WITH DIAMOND CLASP

Composed of a single strand of graduated 13.05mm-14.05 Tahitian cultured pearls of grey tint, to a diamond pavé-set clasp, mounted in 14K gold, diamonds approximately 0.40ct total, length 45.5cm

€ 2,500 - 3,500

68

**A GOLD AND CERAMIC DIAMOND 'ULTRA' DRESS RING, BY CHANEL, CIRCA 2010
DESIGNED BY LORENZ BÄUMER**

Of alternating polished black ceramic and white gold links, mounted in 18K gold, signed Chanel, maker's mark, numbered, with maker's case and certificate of authenticity, ring size Q

€ 300 - 500



69

A PAIR OF CULTURED PEARL AND DIAMOND FLOWER EARRINGS

Each central round-shaped cultured pearl of grey tint, measuring approximately 12.35mm, within brilliant-cut diamond petals, mounted in 18K gold, diamonds approximately 2.00cts total, Italian assay mark, length 2.4cm

€ 800 - 1,200



70

A DIAMOND SINGLE-STONE RING

The rectangular step-cut diamond, weighing approximately 1.02ct, within a four-claw setting, ring size O

€ 2,000 - 2,500

* Please note that the carat weight was given by the client



72

A SAPPHIRE AND DIAMOND CLUSTER RING

The cushion-shaped sapphire, weighing approximately 5.70cts, within a round brilliant-cut diamond surround, diamonds approximately 0.40ct total, ring size Q

€ 3,000 - 4,000

71

A SINGLE-STONE RING, BY TIFFANY & CO.

The round brilliant-cut diamond, weighing 0.24ct, within a six-claw setting, mounted in platinum, signed Tiffany & Co., numbered, ring size K¾

€ 650 - 850



73

A RUBY AND DIAMOND RING

The cushion-shaped ruby, weighing 2.89cts, within a four-claw setting, between baguette-cut diamond shoulders and a single-cut diamond gallery, mounted in 18K gold, diamonds approximately 0.30ct total, ring size O½

€ 3,000 - 4,000

Accompanied by a report from GRS laboratory in Switzerland, stating that the ruby weighing 2.89cts is of Burmese origin, with no indications of heating (treatment), report number GRS-2015-120051, dated February 16th 2016

74

A FANCY COLOURED DIAMOND AND DIAMOND DRESS RING

Of crossover design, set with a pear-shaped fancy intense yellow diamond, weighing 1.62cts, and a pear-shaped diamond, weighing 1.05cts, the shoulders set with baguette-cut diamonds, mounted in platinum, ring size M

€ 8,000 - 10,000

Accompanied by a report from the GIA laboratory in the USA, stating that the diamond weighing 1.62cts is Fancy Intense Yellow. Report number 15314418, dated November 7th 2006

Accompanied by a report from the GIA laboratory in the USA, stating that the diamond weighing 1.05cts is D colour, VS1 clarity. Report number 13773113, dated November 2nd 2004



75

AN AMETHYST AND DIAMOND CLUSTER RING

The oval-shaped amethyst, weighing approximately 10.00cts, within a round brilliant-cut diamond surround, to a multi-furcated hoop, mounted in 18K gold and platinum, diamonds approximately 1.40cts total, French assay marks, ring size L½

€ 1,300 - 1,700



76

A DIAMOND SINGLE-STONE RING

The round brilliant-cut diamond, weighing 1.02cts, to a plain hoop, mounted in platinum, with maker's mark 'DOM', ring size M

€ 3,500 - 4,500

Accompanied by a GIA report, stating that the round diamond weighing 1.02cts is I colour, VVS2 clarity and is laser inscribed. Report number 5172631620, dated May 12th 2016

* Please note that the diamond has been unset from its mounting in order to get its GIA report and is on sale loose in sealed GIA package; sold with its platinum ring mount



80



77

A PAIR OF DIAMOND HOOP EARRINGS

Of circular form, the frontispiece set with a row of single-cut diamonds, the inner section of the reverse similarly-set, mounted in 14K gold, diamonds approximately 0.70ct total, diameter approximately 4cm

€ 800 - 1,200

78

AN AMETHYST DRESS RING, CIRCA 1950

The rectangular-cut amethyst, weighing approximately 23.00cts, to a textured mount, mounted in 18K gold, inscribed '1959' & 'Eve', ring size P½

€ 400 - 600

79

A CITRINE AND DIAMOND CLUSTER PENDANT

The cut-cornered rectangular-cut citrine, weighing approximately 22.00cts, within a round brilliant-cut diamond surround, to a plain bale, mounted in 18K gold, diamonds approximately 2.00cts total, French assay mark, pendant length (including bale) 3.8cm

€ 2,400 - 2,800

80

A GOLD 'TANGO' RING, BY POMELLATO

The plain thick hoop, mounted in 18K gold, signed Pomellato, numbered C900008785, Italian assay mark, ring size N¼

€ 800 - 1,000

81

A GOLD AND DIAMOND NECKLACE, BY FARAONE

Designed as a series of polished circular yellow gold links, each spaced by three-bar links accented with a line of round brilliant-cut diamonds, mounted in 18K gold, diamonds approximately 2.60cts total, signed Faraone, Italian assay mark, French import mark, length 38.5cm, weight 112g

€ 3,500 - 4,500

82

A LADY'S 18K GOLD AND DIAMOND-SET BRACELET WATCH, BY VAN CLEEF & ARPELS

7-jewels quartz movement, the white dial with black Roman numerals and baton hands, within a yellow gold circular case with bezel set with two rows of brilliant-cut diamonds, to an integrated 18K yellow gold and diamond-set bracelet with double folding clasp, case, dial, movement and bracelet signed, movement no: 2513877, serial no: 1863 B2CE1, ref. no: 79704, Swiss assay marks, case diameter (including bezel and crown) 2.5cm

€ 5,000 - 6,000

83

A DIAMOND AND SAPPHIRE BRACELET

Designed as flexible alternating diagonal rows of round brilliant-cut diamonds and sapphires, each interspersed by gold textured links of similar design, mounted in 18K gold, diamonds approximately 3.50cts total, length approximately 18.5cm

€ 3,000 - 5,000



77



79

81



83



82



78

41



84

**A RUBY, SAPPHIRE AND DIAMOND
CROSS-OVER RING**

The oval-shaped ruby and sapphire to a brilliant-cut diamond obliquely-set shoulders, mounted in 18K gold, diamonds approximately 1.60cts total, French assay mark, ring size N½

€ 2,700 - 3,300



85

**A PAIR OF DIAMOND AND GOLD BRACELETS
TOGETHER WITH A RING SUITE**

Each curb-link bracelet, set throughout with single-cut diamonds, mounted in 18K gold, diamonds approximately 5.00cts total, lengths 16.2cm & 16cm; together with a ring of similar design, diamonds approximately 0.30ct total, ring size K

€ 3,000 - 4,000





86

A SAPPHIRE AND DIAMOND CLUSTER RING

The cushion-shaped sapphire, weighing approximately 4.50cts, within a surround of baguette and marquise-cut diamonds, to a bifurcated hoop, mounted in platinum, diamonds approximately 2.00cts total, French assay mark, maker's mark, ring size M

€ 5,000 - 6,000



87

A PAIR OF SAPPHIRE AND DIAMOND PENDENT EARRINGS

Each set with an oval-shaped sapphire within a diamond pavé-set surround, above a collet-set round brilliant-cut diamond, suspending a loop of oval and pear-shaped sapphires, each sapphire within a diamond pavé-set surround, mounted in 18K gold, diamonds approximately 1.60cts total, sapphires approximately 12.50cts total, Italian assay marks, length 5.4cm

€ 3,500 - 4,500

88

A FINE COLOURED SAPPHIRE AND DIAMOND RING

The cushion-shaped yellow sapphire, weighing 21.28cts, within a double four-claw setting, between round brilliant-cut diamonds, mounted in 18K gold, diamonds approximately 0.50ct total, French assay mark, Maker's mark, ring size N½

€ 16,000 - 20,000

Accompanied by a report from C. Dunaigre in Switzerland, stating that the yellow sapphire, weighing 21.28cts, is natural, with no indications of heating (treatment), report number CDC 1604183, dated May 1st 2016

89

A RETRO DIAMOND, GOLD AND PLATINUM BUCKLE BRACELET, CIRCA 1940

The flexible band of honeycomb design, completed by a single-cut diamond clasp, mounted in 18K gold and platinum, diamonds approximately 1.00ct total, French assay marks, length 23.5cm

€ 2,700 - 3,700



90

A GOLD NECKLACE, WITH A BRACELET SUITE

The tapering gold fox tail-link chain necklace, together with a bracelet of similar design, mounted in 18K, necklace length 56.4cm, bracelet length 20cm, total weight approximately 69.89g

€ 1,400 - 1,800



90

91

A DIAMOND AND SAPPHIRE RING, WITH A PAIR OF EARCLIPS SUITE

Of tiered bombé design, one side set with two lines of calibré-cut sapphires flanked by rows of single-cut diamonds, together with a pair of earclips of similar design, mounted in 18K bi-coloured gold, ring size J, earrings length approximately 1.7cm

€ 1,200 - 1,600

92

A SAPPHIRE AND DIAMOND RING

The octagonal step-cut sapphire, weighing approximately 3.60cts, within a four-claw setting, between rectangular and baguette-cut diamond shoulders, mounted in platinum, diamonds approximately 1.50cts total, ring size L

€ 3,000 - 5,000

Accompanied with a report from the SSEF laboratory in Switzerland, stating that the sapphire weighing approximately 3.60cts, is of natural origin, with some indications of heating, report number 78406, dated February 17th 2015

93

A PAIR OF SAPPHIRE AND DIAMOND CLUSTER EARRINGS

Each cluster set to the centre with an oval-shaped sapphire, within a double border of baguette and single-cut diamonds, mounted in 18K gold, diamonds approximately 1.40ct total, length 1.3cm

€ 2,200 - 3,200

94

A PAIR OF CORAL AND DIAMOND EARRINGS, BY CHOPARD

Each corallium rubrum (coral) cabochon set within a frame of round brilliant-cut diamonds, mounted in 18K gold, diamonds approximately 1.30ct total, signed Chopard, diameter 1.8cm

€ 2,500 - 3,500

Please note that this lot might require a CITES permit in advance of being exported out of the EU. It may also be subject to import restrictions in other countries that restrict the import of coral. It is recommended that potential buyers check local import restrictions prior to bidding.

95

A DIAMOND RING, BY BULGARI

The collet-set square-cut diamond, within a single-cut diamond surround, mounted in 18K gold, diamonds approximately 0.40ct total, signed Bulgari, Italian assay mark, ring size M

€ 1,500 - 2,000





90



91



93



94



95



92

96

AN EARLY 20TH CENTURY NATURAL PEARL AND DIAMOND PENDANT NECKLACE

Suspending a natural pearl, measuring approximately 7.3-7.4 x 11.0mm, from a surmount set with a natural pearl, old circular and rose-cut diamonds, to a fine link chain of swag design accented with seed pearls, length approximately 39cm

€ 3,000 - 5,000

Accompanied by a report from The Gem & Pearl Laboratory in London, stating that the drop and the button-shaped pearls are natural, saltwater, report number 08842, dated November 2nd 2013

98

A DIAMOND SINGLE-STONE RING

The rose-cut diamond collet-set within an openwork surround, surmounting a polished domed layer, the whole between shoulders of intricate design, mounted in 14K gold, ring size 0½

€ 800 - 1,000



98

100

AN EARLY 20TH CENTURY OPAL AND DIAMOND NECKLACE, CIRCA 1900

The oval-shaped opal suspending from articulated knifewire bars, each interspersed with old brilliant-cut diamonds, to a fine trace-link chain, diamonds approximately 0.90ct total, length 39cm, in original fitted case by 'T. & J. Perry, Jewellers & Silversmiths, 124, Regent St.W'

€ 2,000 - 3,000

97

A BELLE EPOQUE SAPPHIRE AND DIAMOND PENDANT ON CHAIN, CIRCA 1910

In the garland style, millegrain-set throughout with old brilliant and rose-cut diamonds, surrounding a pear-shaped cabochon sapphire, suspended from a later belcher-link chain, mounted in 18K gold, diamonds approximately 0.40ct total, French assay mark, pendant length (including bale): 4cm

€ 1,000 - 1,500

** Please note that the sapphire weighing approximately 7.50cts was verbally tested at GCS laboratory in London in January 2017, and was tested natural, basaltic origin

99

A PAIR OF 19TH CENTURY DIAMOND AND ENAMEL PENDENT EARRINGS

Each designed as a rose-cut diamond circle enclosing curving openwork blue enamel swirls with diamond detail, each with a principle rose-cut diamond to the centre, in foiled closed-back settings, with similarly-cut diamond surmounts, mounted in silver and gold, length 4.7cm

€ 2,500 - 3,000

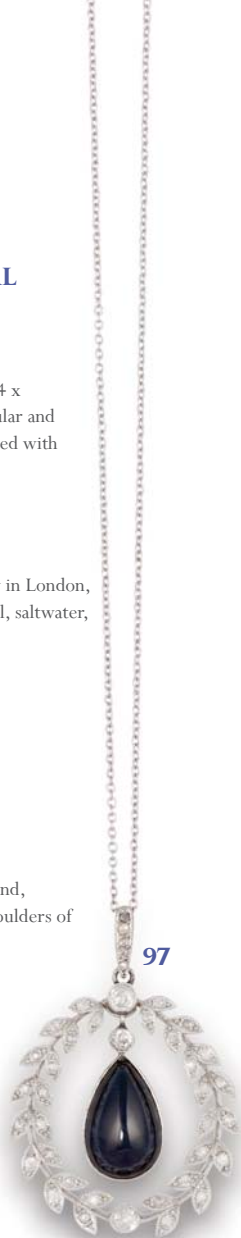
101

A SAPPHIRE AND DIAMOND BROOCH

The elongated millegrain-set bar brooch composed of a central cushion-shaped sapphire weighing approximately 2.80cts, within a surround of old brilliant and single-cut diamonds, the bar similarly-set, mounted in 18K gold, French assay mark, diamonds approximately 0.80ct total, length 5cm

€ 1,200 - 1,600

Accompanied by a report from SSEF laboratory in Switzerland, stating that the sapphire weighing approximately 2.80cts, is natural, of Basaltic origin. Report number 81337, dated August 5th 2015



97



96



101



99



100

49

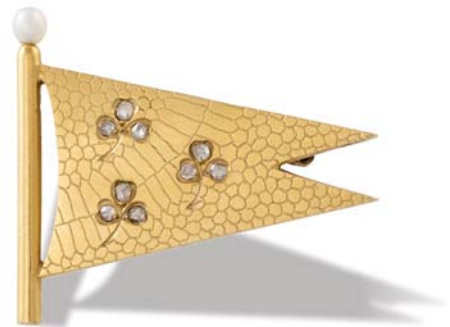


102

**A LATE 19TH CENTURY DIAMOND PENDANT,
CIRCA 1880**

Of foliate design, the central old cushion-shaped diamond weighing approximately 2.00cts, within a surround of old brilliant-cut diamonds and rose-cut diamond accents, suspending a small pendant of similar design, mounted in silver and gold, remaining diamonds approximately 1.00cts total, length (including bale): 5.7cm (with a later cord of burgundy colour, with an 18K lobster clasp)

€ 2,500 - 3,500



103

**A GOLD, DIAMOND AND SEED PEARL
BROOCH**

Designed as a nautical pennant, the textured plaque set with three rose-cut diamond shamrocks, highlighted with a seed pearl, mounted in 18K gold, French assay mark, width 3.2cm

€ 200 - 400



104

AN EARLY 20TH CENTURY NATURAL PEARL AND DIAMOND NECKLACE, CIRCA 1910

The collet-set old brilliant-cut diamond, weighing approximately 1.80cts, and a single-cut diamond, between knife-wire spacers, terminating with a natural drop pearl, to a belcher-link chain, *pendant length 4.2cm, necklace length 45cm*

€ 2,000 - 3,000

Accompanied by a report from GCS laboratory in London, stating that the pearl, measuring approximately 10.0 x 6.9 x 5.9mm, is natural, saltwater, with no indications of treatment. Report number 5777-9315, dated March 21st 2017



10

AN EDWARDIAN AMETHYST AND DIAMOND PENDANT ON CHAIN

Designed as a carved amethyst shell, capped with single-cut diamonds and suspended from a fancy-link chain interspersed with brilliant-cut diamonds, *mounted in platinum, diamonds approximately 0.40ct total, amethyst pendant length 5cm, chain length 45cm*

€ 1,200 - 1,600

106

A SAPPHIRE AND GOLD NECKLACE

The snake-link chain, set to the front with rectangular step-cut sapphire links, *mounted in 18K gold*

€ 800 - 1,200

Accompanied by a certificate of guarantee, stating that the necklace is 18K gold, and the total weight of the sapphires is 10.72cts, dated November 23rd 2007

107

A SAPPHIRE AND DIAMOND CLUSTER RING

The oval-shaped sapphire, weighing approximately 5.20cts, within a surround of round brilliant-cut diamonds, *mounted in 18K gold, diamonds approximately 1.20cts total, ring size M½*

€ 3,000 - 5,000

** Please note that the sapphire weighing approximately 5.20cts was verbally tested at GCS laboratory in London in January 2017, and was tested natural, basaltic origin

108

AN EMERALD AND DIAMOND BRACELET, BY REPOSSI

The heart-shaped links set with round-shaped emeralds and diamonds, between two cable-link chains, *mounted in 18K gold, French assay marks, length 15.7cm*

€ 700 - 1,000

109

AN EMERALD, DIAMOND AND PEARL PENDANT/NECKLACE

The highly stylised openwork pendant designed as curving leaves, set throughout with brilliant-cut diamonds, enclosing a pear-shaped emerald to the centre within a border of further brilliant-cut diamonds, the whole suspended from a three-row seed pearl necklace, *emerald weighing approximately 5.50cts, diamonds approximately 2.50cts total, pendant approximately 6.6cm*

€ 3,000 - 4,000

110

A RUBY AND DIAMOND BRACELET

Set to the front with oval-shaped rubies between trios of round brilliant-cut diamonds, to a fancy-link backchain, *mounted in 18K gold, diamonds approximately 0.70ct total, length 18.4cm*

€ 800 - 1,000

111

A PAIR OF RUBY AND DIAMOND CLUSTER EARSTUDS

Each set centrally with a round-shaped ruby, within a surround of round brilliant-cut diamonds, *mounted in 18K gold, diamonds approximately 0.30ct total, length 7mm*

€ 200 - 400



108



109



106



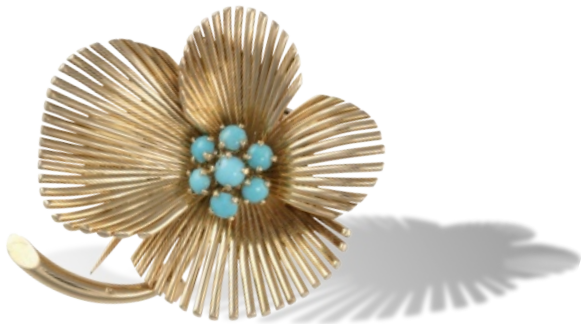
107



110



111



112

**A GOLD AND TURQUOISE
FLOWER BROOCH**

Designed as a stylised flower, the stamen set with cabochon turquoises, with textured gold petals, *mounted in 18K gold, French import mark, length 3.9cm*

€ 250 - 450



113

**A GOLD AND DIAMOND
DRESS RING**

The dome shaped ring, set with three round brilliant-cut diamonds at the centre, to a rope and open-work band, *mounted in 18K gold, diamonds approximately 0.15ct total, French assay mark, ring size L*

€ 350 - 400



114

**A GOLD, TURQUOISE, RUBY,
DIAMOND AND ONYX
NOVELTY BROOCH, CIRCA
1960**

Modelled as a small dog, the eye set with a round-shaped ruby and diamonds, the nose with black onyx, and the collar set with cabochon turquoises, *mounted in 18K gold, engraved 'Noël 1961', stamped 'Déposé SSM', French import marks, length 4.4cm*

€ 900 - 1,200





115

A CULTURED PEARL AND DIAMOND NECKLACE

The collar necklace composed of brilliant-cut diamond floral clusters alternating with cultured pearls, the front suspending a graduating fringe of brilliant-cut diamond foliate motifs, each terminating a cultured pearl drop, *mounted in gold, diamonds approximately 5.50cts total*

€ 4,000 - 6,000

116

A DIAMOND DRESS RING

Centrally-set with a row of graduated baguette-cut diamonds, between rows of graduated round brilliant-cut diamonds, *mounted in 18K gold, diamonds approximately 2.20cts total, Italian assay mark, ring size N*

€ 1,500 - 2,000



117

A DIAMOND RING

Of swirl design, the central brilliant-cut diamond, within a four-claw setting, to a multi-furcated hoop, *mounted in platinum, French assay mark, ring size*

€ 1,000 - 1,500



118

A PAIR OF CULTURED PEARL AND DIAMOND EARRINGS

Each round-shaped cultured pearl of white tint, accented by a cluster of baguette and brilliant-cut diamonds, *mounted in silver and gold, diamonds approximately 1.10cts total, length 1.4cm*

€ 1,000 - 1,500



119

A CULTURED PEARL AND DIAMOND BROOCH / PENDANT

Designed as a stylized cluster of grapes, the openwork brilliant and baguette-cut diamond branches suspending graduated round cultured pearls with similarly-cut diamond accents, mounted in 9K gold, diamonds approximately 2.30cts total, French assay marks, length 5.4cm

€ 1,000 - 1,500



120

A JADE AND DIAMOND NECKLACE

Composed of 24 green jadeite jade beads measuring from 14.8mm to 15.1mm, enhanced by round brilliant-cut diamond rondelles, with a similar-cut diamond clasp, mounted in 18K gold, diamonds approximately 2.50cts total, length approximately 40.5cm

€ 3,500 - 4,500

Accompanied by a report from GCS laboratory in London, stating that the jade beads are natural, with no indications of impregnation (colour treatment), report number 5777-8846 dated February 28th 2017.

121

A THREE BI-COLOURED TOURMALINE DRESS RING

The rectangular step-cut bi-coloured tourmalines weighing approximately 10.47cts total, to a plain hoop, mounted in 18K gold, with maker's mark ring size P¾

€ 2,000 - 3,000



122

A DIAMOND AND ONYX BRACELET, CIRCA 1920

Composed of openwork round-shaped links set with old brilliant-cut diamonds and calibr -cut onyx, to collet mounted old brilliant-cut diamond spacers, mounted in gold and platinum, French import marks, diamonds approximately 9.50cts total, length approximately 17.4cm, with security chain

  12,000 - 14,000



123

AN EARLY 20TH CENTURY EMERALD AND DIAMOND RING, CIRCA 1920

The millegrain-set rectangular step-cut emerald, within an old brilliant and baguette-cut diamond surround, to similarly-cut diamond shoulders and pierced gallery, mounted in platinum, diamonds approximately 2.20cts total, ring size K³/₄

  5,000 - 7,000

Accompanied with a report from GCS laboratory in London, stating that the emerald weighing approximately 4.10cts, is of Colombian origin, with moderate clarity enhancement. Report number 5777-9314, dated March 20th 2017.



124

A COLOURED BERYL AND DIAMOND NECKLACE, BY MARGHERITA BURGNER

Suspending a two row coloured beryl bead swag, measuring approximately 10.02mm, to a single row of larger coloured beryl beads measuring approximately 11.96mm, highlighted with pavé-set diamond rondelles, terminating with a brilliant-cut diamond on a hook-and-eye clasp, *mounted in 18K gold, diamonds 1.14cts, signed Margherita Burgener, with maker's marks, Italian assay mark, length 46cm, with maker's case*

€ 3,000 - 4,000

126

A QUARTZ AND DIAMOND DRESS RING

The rectangular-cut blue quartz, within a four-claw setting, between single-cut diamond shoulders, *diamonds approximately 0.10ct total, ring size N½*

€ 500 - 700

125

A PAIR OF AQUAMARINE EARCLIPS WITH A RING SUITE, BY SEAMAN SCHEPPS

Each earclip set with a cushion-shaped cabochon aquamarine, within a four double-claw setting, together with a ring of similar design, *mounted in 18K gold, signed Seaman Schepps, maker's marks, numbered, ring size M, earclip length 2.1cm*

€ 2,000 - 3,000

126A

A LADY'S 'BRASILIA' STAINLESS STEEL AND DIAMOND WATCH, BY EBEL

Quartz movement, mother-of-pearl dial with diamond set hour markers and Roman luminous numerals at 12 and 6 o'clock, polished curved rectangular case with back secured by 6 screws, diamond-set bezel, fitted polished Ebel link bracelet and signed folding clasp, case, dial and movement signed, ref.no: E9255M4S, serial no: A129099, case width (including crown): 3.4cm, with maker's box

€ 800 - 1,200



126A



126



124



125





127

A CULTURED PEARL, SAPPHIRE AND DIAMOND DRESS RING

Centrally-set with a white South Sea cultured pearl, measuring approximately 14.11mm, within a surround of circular-cut diamonds, to a wide bombé band pavé-set with circular-cut sapphires, mounted in 18K gold, diamonds approximately 0.50ct total, ring size M

€ 1,400 - 1,800

128

A CULTURED PEARL DOUBLE STRAND NECKLACE WITH DIAMOND CLASP

Comprising of two strands of graduated white South Sea pearls of baroque and round shape, measuring approximately 13.61-9.95mm, the clasp mounted in 18K gold with brilliant-cut diamonds, diamonds approximately 0.40ct total, Italian assay marks, lengths approximately 80cm & 99cm (including clasp)

€ 4,000 - 5,000

129

A DIAMOND DRESS RING

Designed as a four interlocking bands, each set throughout with round brilliant-cut diamonds, *mounted in 18K gold, diamonds approximately 5.00cts, ring size Q*

€ 2,000 - 3,000

* Please note that the bands are rigid



130

A PAIR OF TSAVORITE GARNET AND SAPPHIRE EARRINGS, BY MARGHERITA BURGNER

Each of bombé tear-drop form, pavé-set with circular-cut tsavorite garnets and a cabochon sapphire highlight, *mounted in 18K gold, tsavorites weighing 3.48cts, sapphires weighing 0.43ct total, signed Margherita Burgener, maker's mark, Italian assay mark, length 1.6cm, with maker's case*

€ 1,600 - 2,200



131

A DIAMOND THREE-STONE RING

The Gypsy-set with a trio of brilliant-cut diamonds, *mounted in 18K gold, diamonds approximately 0.20ct total, ring size J½*

€ 300 - 500





132

A PAIR OF CORAL AND SAPPHIRE PENDENT EARRINGS

Each pear-shaped openwork pendent, set with oval-shaped cabochon corals within a frame of circular-cut sapphires, suspending from a circular-cut coloured diamond and a similarly-set surmount, mounted in silver and 14K gold, length 5.9cm

€ 800 - 1,000

Please note, this lot might require a CITES permit in advance of being exported out of the EU. It may also be subject to import restrictions in other countries that restrict the import of coral. It is recommended that potential buyers check local import restrictions prior to bidding.

134

A TOURMALINE AND DIAMOND RING

The oval mixed-cut pink tourmaline in collet-setting, between square-cut diamond shoulders, mounted in 18K gold, diamonds approximately 0.30ct total, ring size M $\frac{3}{4}$

€ 600 - 800



133

A TURQUOISE BEAD NECKLACE

A single strand bead necklace consisting of smooth polished spherical turquoise beads graduating from 15.92 to 7.72mm, to a plain clasp, length approximately 74cm

€ 1,000 - 2,000

135

A PERIDOT AND DIAMOND DRESS RING

Of contemporary design, a marquise-shaped peridot on one end, a marquise-shaped diamond pavé-set plaque on the other end, to a plain hoop, mounted in 18K gold, ring size K

€ 500 - 700





133



132



135



134



136

A RETRO GOLD BRACELET

The highly flexible gaspipe-link bracelet with spherical ends, *mounted in gold, French import mark*

€ 3,500 - 4,000



137

A LADY'S 18K GOLD BRACELET WATCH, BY CHOPARD

20-jewels Cal-895, manual wind, white dial with black Roman numerals, black sword hands, with blue cabochon crown, dial and movement signed, *Swiss assay mark, ref. no: 134498, 2111 1, on leather strap, case width (including crown): 2.5cm*

€ 600 - 800



138

**A LADY'S 18K GOLD 'MUST DE CARTIER'
BRACELET WATCH, BY CARTIER, CIRCA 1980**

15-Jewelled manual wind movement, white dial with black Roman numerals, gilt sword hands, polished round case with molded bezel, cabochon sapphire-set crown, fitted black Cartier leather bracelet with 18K gold signed deployant clasp, case, dial, clasp and movement signed, *serial no: 670801008, case width (including bezel and crown) 2.7cm, with fitted Cartier case*

€ 1,800 - 2,300



139

**A DIAMOND AND COLOURED GEM-SET
PENDANT ON CHAIN**

Designed as a rosette, the pendant set throughout with old cushion-shaped diamonds, seed pearls and cabochon emeralds, rubies and sapphires, suspending from a fancy-link chain, *mounted in 18K gold, diamonds approximately 1.00ct total, French assay marks, pendant length 6.6cm, chain length 62.5cm, total weight approximately 73.40g*

€ 1,700 - 2,300



140

AN EMERALD AND DIAMOND DRESS RING

Designed as a star, the openwork of ropetwist design, set to the centre with a rectangular-cut emerald, highlighted with old brilliant and rose-cut diamonds, to a reeded hoop, mounted in 18K gold, diamonds approximately 0.50ct total, French assay mark, ring size P

€ 3,500 - 4,500



141

A PAIR OF EMERALD AND DIAMOND PENDENT EARRINGS

Each oval-shaped emerald surmount within an old brilliant-cut diamond surround, suspending a kite-shaped emerald within a similarly-cut diamond frame, diamonds approximately 3.30cts total, length 3.5cm

€ 2,000 - 3,000





142

A DIAMOND LINE BRACELET

The graduated line of round brilliant-cut diamonds, each interspersed by similarly-cut diamonds, *mounted in 18K gold, diamonds approximately 7.50cts total, length approximately 16.5cm*

€ 5,000 - 7,000



143

A PAIR OF DIAMOND AND SAPPHIRE FLOWER EARCLIPS

Each central bombé cluster of brilliant, marquise and baguette-cut diamonds, within circular-cut sapphire highlights, *diamonds approximately 3.00cts total, length approximately 2.5cm*

€ 3,000 - 4,000



144

A DIAMOND SINGLE-STONE RING, BY WEST

The round brilliant-cut diamond, weighing approximately 1.40cts, within a six-claw setting, *mounted in platinum, signed West, ring size T, in maker's case*

€ 2,000 - 3,000



145

A 'B-ZERO' RING, BY BULGARI

The polished segmented band, both sides of the ring engraved 'Bulgari', *mounted in 18K gold, signed Bulgari, Italian assay mark, French Import mark, ring size M¼*

€ 500 - 800

146

A GOLD AND DIAMOND BRACELET

Composed of three rows of bombé brick-work links, each link pavé-set with round brilliant-cut diamonds, *mounted in 18 & 14K gold, diamonds approximately 2.20cts total, Italian & French assay marks, length 18.5cm*

€ 2,200 - 2,800

147

AN AMETHYST AND DIAMOND CLUSTER RING

The cushion-shaped mixed-cut amethyst, within a surround of round brilliant-cut diamonds, *mounted in 18K gold, diamonds approximately 0.50ct total, ring size M¾*

€ 600 - 800

148

A PAIR OF AMETHYST AND DIAMOND PENDENT EARRINGS

Each briolette-shaped amethyst capped with single-cut diamonds, suspended from a round brilliant-cut diamond surmount, *mounted in 18K gold, diamonds approximately 0.50ct total, length 4.7cm*

€ 700 - 1,400



147



145



146



144



148

149

A LABRADORITE AND GOLD NECKLACE

Each spectacle-set faceted labradorite plaque, to a cable-link chain, *length approximately 88cm*

€ 1,000 - 1,500

151

151

**A DIAMOND PENDANT ON CHAIN,
BY TIFFANY & CO.**

The round brilliant-cut diamond, weighing approximately 0.15ct, within collet setting, to a fine cable-link chain, *mounted in 18K gold, signed Tiffany & Co., length 42cm*

€ 550 - 750

153

AN AMETHYST DRESS RING

The oval-shaped cabochon amethyst, in a collet setting, to a bifurcated hoop, *mounted in gold, ring size P¼*

€ 600 - 800

150

A DIAMOND SINGLE-STONE RING

The cut-cornered rectangular-cut diamond, weighing 1.04cts, within a diamond pavé-set surround, to a similarly-cut diamond hoop, *mounted in 18K gold, remaining diamonds approximately 0.30ct total, ring size L*

€ 2,500 - 3,500

Accompanied with a report from EGL USA, stating that the diamond weighing 1.01cts is F-G colour, VS1 clarity, report number 56963301D, dated January 10th 2011

152

**A RUBY AND DIAMOND BRACELET,
BY REPOSSI**

The heart-shaped links set with round-shaped rubies and diamonds, between two cable-link chains, *mounted in 18K gold, signed Repossi, French assay marks, length 15.7cm*

€ 700 - 1,000

154

A TOURMALINE AND DIAMOND BRACELET

Composed of collet-set green, pink and blue cabochon tourmalines, each between gold spacers, terminating with a round brilliant-cut diamond bar link, *mounted in 18K & 14K gold, length 17.5cm*

€ 600 - 800



152



149



150



153



154



155

**A PAIR OF PERIDOT AND DIAMOND
EARCLIPS**

Each designed as a circular swirl of round-shaped peridots, with round brilliant-cut diamond exterior border, *mounted in 18K gold, peridots approximately 18.50cts total, diamonds approximately 1.00ct total, length 3.5cm*

€ 3,000 - 4,000



156

A DIAMOND ETERNITY RING

Channel-set throughout with square-cut diamonds, *mounted in platinum, diamonds approximately 1.80cts total, ring size 1/4*

€ 1,200 - 1,800



157

A DIAMOND CROSS PENDANT ON CHAIN

The latin cross set throughout with round brilliant-cut diamonds, within a millegrain setting, with a similarly-cut diamond bale, to a fine trace-link chain, *chain and pendant mounted in 18K gold, diamonds approximately 1.60cts total, pendant including bale 3.5cm*

€ 1,000 - 1,500



158

A RUBY LINE BRACELET

The articulated line of square-cut rubies, between borders of millgrain details, *mounted in 18K gold, length approximately 18.4cm*

€ 1,200 - 1,600



159

A RUBY ETERNITY RING

Composed of a single row of channel-set calibr -cut rubies, *ring size V3/4*

€ 1,000 - 1,500



160

A RUBY AND DIAMOND DRESS RING

The cushion-shaped ruby, weighing approximately 2.80cts, between graduating baguette-cut diamond shoulders, *mounted in 18K gold, diamonds approximately 1.20cts total,*

€ 3,800 - 4,800



161

A PAIR OF DIAMOND EARSTUDS

Each round brilliant-cut diamonds, weighing approximately 0.80ct, within a four-claw settings, *mounted in 18K gold*

€ 2,200 - 3,200

163

A PAIR OF SAPPHIRE AND DIAMOND CLUSTER EARRINGS

Each central circular-cut sapphire, within a single-cut diamond surround, *mounted in 18K gold, diamonds approximately 0.60ct total, length approximately 1.1cm*

€ 2,000 - 3,000

Accompanied by a report from C. Dunaigre laboratory in Switzerland, stating that the sapphire weighing 3.05ct is of Burmese origin, with no indications of heating (treatment), report number CDC1702201, dated February 10th 2017

Accompanied by a report from Stalwart laboratory in Burma, stating that the sapphires weighing 3.05cts & 2.53cts are of Burmese origin, with no indications of heating (treatment), report number 12627804, dated June 24th 2016

165

A DIAMOND RING

Set with brilliant-cut diamonds in scatter formation, within a brushed finish hoop, *mounted in 18K gold, diamonds approximately 0.20ct total, ring size M½*

€ 550 - 750

162

A DIAMOND SINGLE-STONE RING

The round-shaped diamond, weighing approximately 2.40cts, within a six-claw setting, *mounted in 18K gold, ring size N*

€ 10,000 - 15,000

164

A SAPPHIRE AND DIAMOND CLUSTER RING

The elongated oval-shaped sapphire, weighing approximately 9.70cts, in a four-claw setting, within a round brilliant and pear-shaped diamond surround, *mounted in 18K gold, diamonds approximately 2.30cts total, French import mark, ring size L¾*

€ 5,000 - 7,000

166

A DIAMOND PENDANT ON CHAIN

The latin cross set with pavé-set diamonds, to a fine snake-link chain, *mounted in 9K gold, diamonds approximately 0.30ct total, pendant length 3.5cm, chain length 40.8cm*

€ 300 - 500





166



162



164



163



161



165



167

A STAINLESS STEEL AUTOMATIC 'MASTER BANKER' BRACELET WATCH, BY FRANK MULLER, CIRCA 2008

Jewelled Cal. 2800 automatic movement with platinum rotor, guilloché engraved silvered dial with black exploded Arabic numerals, black outer minute track with five minute markers, blued steel hands with centre seconds, subsidiary dials at 6 and 12 for dual time zones, date aperture at 3, brushed and polished tonneau shaped case with back secured by 4 screws, fitted polished link bracelet with double folding clasp, case, dial and movement signed, *ref no: 6850MB, 534, case width (including crown): 3.6cm*

€ 3,000 - 4,000



168

AN AGATE AND GOLD PENDANT

The oval-shaped carnelian agate plaque, within a multi-claw setting and a scrolling gold frame, with gold Arabic inscriptions of a versus of the Koran, *stamped 18K gold in Arabic, width 5.2cm*

€ 550 - 750



169

**A STAINLESS STEEL 'EVIDENZA' CALENDAR
CHRONOGRAPH BRACELET WATCH,
BY LONGINES, CIRCA 2004**

37-jewels automatic movement, cream dial, black Arabic numerals, subsidiary dials at 3, 6 and 9, for seconds, 30 minutes and 12 hour recording, date aperture at 6, polished blue steel hands, polished tonneau shape case, back secured by 4 screws, crown flanked by twin buttons, *serial no: 31803182, ref no: L26434, original leather bracelet, original stainless steel buckle, case, movement and dial signed, case width (including crown): 3.7cm, with original case and papers.*

€ 800 - 1,000



170

**A PLATINUM WEDDING BAND,
BY TIFFANY & CO.**

The plain polished hoop, *mounted in platinum, signed Tiffany & Co. 1999, ring size 5½*

€ 400 - 600

171

A PAIR OF TITANIUM AND DIAMOND EARRINGS, BY MARGHERITA BURGNER

Each designed as a stylised leaf of green tint, accented by pavé-set diamond trim, *mounted in 18K gold and titanium, diamonds 0.58ct total, signed Margherita Burgner, Italian assay mark, length 2.8cm, with maker's case*

€ 1,600 - 2,600

173

A PAIR OF DIAMOND EAR STUDS

Each round brilliant-cut diamond, within a four-claw setting, *mounted in 18K gold, diamonds approximately 1.90cts total*

€ 4,400 - 4,800

175

AN EMERALD AND DIAMOND BRACELET

Set throughout with marquise-shaped emeralds, each within a round brilliant-cut diamond surround, interspersed by a similarly-cut diamond, *mounted in 18K gold, diamonds approximately 5.20cts total, length 19cm*

€ 5,000 - 6,000

172

A DIAMOND DRESS RING

The round brilliant-cut diamond, weighing approximately 2.30cts, within a half collet-setting, between pavé-set diamond shoulders, *mounted in 18K gold, remaining diamonds approximately 1.00ct total, French assay marks (partly rubbed off), ring size M½*

€ 4,000 - 6,000

174

AN EMERALD AND DIAMOND RING

The cut-cornered square step-cut emerald, weighing approximately 4.40cts, within a double border of round brilliant and baguette-cut diamonds, to a multi-furcated hoop, *mounted in platinum, remaining diamonds approximately 2.70cts total, French assay mark, ring size M½*

€ 6,000 - 8,000

Accompanied by a report from GCS laboratory in London, stating that the emerald weighing approximately 4.40cts, is of Colombian origin, with indications of moderate clarity enhancement. Report number 5777-9312, dated March 20th 2017

176

A RHODOLITE 'TABOU' DRESS RING, BY POMELLATO

The oval mixed-cut rhodolite, within a circular-cut rhodolite surround, *mounted in 18K gold and 925 silver, signed Pomellato, numbered C100020737, Italian assay mark, ring size M*

€ 1,200 - 1,600





171



172



173



174



175



176

177

A SAPPHIRE AND DIAMOND CLUSTER RING

The oval-shaped blue sapphire, weighing approximately 1.20cts, within a round brilliant-cut diamond surround and single-cut diamond shoulders, *mounted in 18K gold, diamonds approximately 0.90ct total, ring size O*

€ 1,800 - 2,800

178

A RUBY AND DIAMOND CLUSTER RING

The round-shaped ruby, weighing approximately 2.00cts, within a surround of round brilliant-cut diamonds, *mounted in 18K gold, diamonds approximately 0.60ct total, ring size R*

€ 6,500 - 7,500

Accompanied by a report from GCS laboratory in London, stating that the ruby is of Burmese origin, with indications of heating with minor residues, report number 57764425, dated February 2nd 2016

179

A GOLD FANCY-LINK NECKLACE

The triple textured curb-link necklace, *mounted in 18K gold, Italian assay mark, length approximately 43cm*

€ 1,500 - 2,000

180

A PAIR OF CULTURED PEARL, SAPPHIRE AND DIAMOND PENDENT EARRINGS

Each knifewire bar with a single-cut diamond between similarly-cut sapphires, suspending a pear drop cultured pearl measuring approximately 11.49x8.52mm to a seed pearl surmount, *mounted in gold, length 5.4cm*

€ 600 - 800

181

A SAPPHIRE AND DIAMOND RING, BY BULGARI

The collet-set square-cut sapphire, within a single-cut diamond surround, *mounted in 18K gold, signed Bulgari, Italian assay mark, ring size M*

€ 1,500 - 2,000



181



179



178



180



177



182

A TANZANITE BEAD NECKLACE

Composed of six rows of graduated faceted tanzanite beads, to a gem-set and diamond clasp, length of shortest row approximately 48cm, length of longest row approximately 59cm, length of clasp 3.4cm, total weight (including clasp): 132.69g

€ 2,000 - 3,000



185

183

183

A RUBY AND DIAMOND CLUSTER RING

The oval-shaped ruby, weighing 1.35cts, within a brilliant-cut diamond surround and shoulders, *diamonds approximately 0.60ct total, ring size M½*

€ 2,000 - 3,000

Accompanied with a report from GCS laboratory in London, stating that the ruby weighing 1.35cts, is of Madagascar origin, with no indications of heating (treatment), report number 5777-7920, dated November 29th 2016

184

AN SAPPHIRE AND DIAMOND BRACELET, BY REPOSSI

The heart-shaped links set with round-shaped sapphires and diamonds, between two cable-link chains, *mounted in 18K gold, signed Repossi, French assay marks, length 15.7cm*

€ 700 - 1,000

185

A GOLD AND DIAMOND NECKLACE

The necklace set with round bombé-shaped links, centrally set with graduated round brilliant-cut diamond, each within collet-setting, *mounted in gold, diamonds approximately 1.50cts total, length 44cm*

€ 2,000 - 2,500



184

186

A LAPIS LAZULI AND DIAMOND 'CAPRI' RING, BY POMELLATO

The faceted cushion-shaped lapis lazuli, between brilliant-cut diamond shoulders, *mounted in 18K gold, signed Pomellato, Italian assay mark, ring size F½*

€ 1,000 - 1,500

187

A PAIR OF LAPIS LAZULI AND DIAMOND 'CAPRI' EARRINGS, BY POMELLATO

Each faceted cushion-shaped lapis lazuli beneath a brilliant-cut diamond surmount, *mounted in 18K gold, signed Pomellato, Italian assay marks, length 1.8cm*

€ 1,400 - 1,800

188

A LAPIS LAZULI AND DIAMOND 'CAPRI' PENDANT ON CHAIN, BY POMELLATO

The faceted cushion-shaped lapis lazuli, with a brilliant-cut diamond bale, to a fine cable-link chain, *mounted in 18K gold, signed Pomellato, Italian assay marks, pendant length 1.8cm, necklace length 40cm*

€ 800 - 1,200



189

A DIAMOND CLUSTER RING

The central brilliant-cut diamond, within a graduating similarly-cut diamond surround and shoulders, *mounted in 18K gold, diamonds approximately 1.70cts total, ring size K $\frac{3}{4}$*

€ 1,400 - 1,800

190

AN EMERALD AND DIAMOND RING

The cushion-shaped emerald, weighing approximately 2.60cts, within collet-setting, between trillion and single-cut diamond shoulders, *mounted in 18K gold, French assay mark, diamonds approximately 1.00ct total, ring size J $\frac{1}{4}$*

€ 2,000 - 3,000

191

A DIAMOND PENDANT NECKLACE

The round brilliant-cut diamond, within a single-cut diamond surround to a similarly-cut bale, suspending from a fine cable-link chain highlighted with round brilliant-cut diamonds, each within collet setting, *mounted in 18K gold, principal diamonds weighing approximately 0.70ct, remaining diamonds weighing approximately 0.35ct total, pendant length 1.6cm (including bale), necklace length 42cm*

€ 1,500 - 2,000

192

A PAIR OF CULTURED PEARL, SAPPHIRE AND DIAMOND EARRINGS

Each round cultured pearl of rose tint measuring approximately 10.43mm, accented by a cluster of heart-shaped pink sapphires, within an exterior border of brilliant-cut diamonds, *mounted in 18K gold, diamonds approximately 0.60ct total, length 1.8cm*

€ 3,500 - 4,000





191



190



192



189



193

A GOLD CHAIN TOGETHER WITH A CHALCEDONY FOB

The double-row book-link chain, suspending a bloodstone and agate inset swivel fob seal, mounted in 9K gold, chain length approximately 155cm, fob length (including bale): 3.4cm, total weight approximately 88.73g

€ 1,000 - 1,500



194

AN ART DECO ZIRCON AND DIAMOND RING

Set centrally with a circular-cut orange zircon, weighing approximately 6.20cts, within a millegrain-set single-cut diamond surround, between baguette-cut diamond shoulders, diamonds approximately 1.00cts total, ring size P $\frac{3}{4}$

€ 1,800 - 2,800

Zircons are important gemstones of many colours, and are historical gemstones used for thousands of years. The name 'Zircon' derives from the Persian 'zargun' meaning gold-hued. Yellow, orange and red zircons are also known as 'hyacinth', from the flower hyacinthus, whose name is of Ancient Greek origin. Most zircon deposits come from Burma, though Australia boasts the oldest deposits dating back over 4 billion years.

195

**A 19TH CENTURY LADY'S FULL HUNTER
POCKET WATCH TOGETHER WITH AN 18K
GOLD CHAIN**

The lady's full hunter pocket watch with suspension loop, milled winder, the case engraved with vacant cartouche and floral engraved border, enclosing a white enamel dial with Arabic numerals and seconds subsidiary, mounted in 18K gold, serial number 529; together with a fancy-link chain necklace, mounted in 18K gold, length approximately 184cm, total weight approximately 90.90g

€ 1,800 - 2,300



196

**A LADY'S 14K GOLD AND DIAMOND-SET
QUARTZ BRACELET WATCH,
BY BAUME & MERCIER**

Quartz movement, oval dial with gold triple-dot markers, inner minutes and baton hands, to a diamond-set bezel, on an integral gold mesh strap, signed crown, bracelet, case and movement, ref. no: 6635DBT, serial no: 2852045, case and bracelet mounted in 14K gold, diamonds approximately 0.30ct total, engraved on back of the case 'For C, V + E Love Sean 1998', length 17cm, case width 2cm

€ 600 - 800





197

A PAIR OF SAPPHIRE, CULTURED PEARL AND DIAMOND PENDENT EARRINGS

Each round-shaped cultured pearl of grey tint, measuring approximately 10.84mm, within a single-cut diamond surround, suspending a tassel of sapphire beads, *mounted in 14K gold, length approximately 8.8cm*

€ 600 - 800

199

A DIAMOND ETERNITY RING, BY TIFFANY & CO.

Composed of a continuous row of round brilliant-cut diamonds, *mounted in platinum, diamonds approximately 0.80ct total, signed Tiffany & Co., ring size G $\frac{3}{4}$*

€ 2,200 - 2,700

198

A MULTI-COLOURED CULTURED PEARL NECKLACE WITH DIAMOND CLASP

The graduated 12.71mm-10.65mm cultured pearls, of silver, grey, white and gold tints, the clasp pavé-set with single-cut diamonds, *mounted in 14K gold, length 88cm*

€ 2,000 - 4,000

200

A DIAMOND SINGLE-STONE RING

The brilliant-cut diamond, within a six-claw setting, weighing approximately 3.00cts, *mounted in 18K gold, French assay mark, ring size L*

€ 9,000 - 11,000



198



197



199



200

201

A GOLD AND DIAMOND-SET SUITE, BY FOPE

The polished articulated brick-link necklace set with three interspersed links of single-cut diamond highlights, with a bracelet and a pair of earrings of similar design, mounted in 18K gold, signed Fope, Italian assay marks; Necklace length 42cm, bracelet length 19cm, earrings length 1.5cm

€ 1,300 - 1,700

202

A 'B-ZERO' RING, BY BULGARI

The polished segmented band, both sides of the ring engraved 'Bulgari', mounted in 18K gold, signed Bulgari, Italian assay mark, ring size 1 1/2

€ 500 - 800



201

203

A LADY'S 18K GOLD AND DIAMOND BRACELET WATCH, BY EBEL

17-jewel quartz movement, cream dial with Roman gold numerals, gold hands, the bezel set with round single-cut diamonds, back secured by four screws, to an 18K gold wave-link bracelet with deployment clasp, dial, bracelet signed, Swiss assay mark, French import marks, ref. no: 3365, serial no: 866901, case (including bezel and crown) 2.6cm

€ 1,500 - 2,500

204

A PAIR OF CULTURED PEARL AND DIAMOND EARRINGS

Each round-shaped cultured pearl measuring approximately 10.23mm, capped with single-cut coloured diamonds, with a similarly-cut diamond surmount, mounted in 18K gold, diamonds approximately 0.50ct total, length 2.6cm

€ 600 - 800

* Please note that the coloured diamonds have not been tested for natural colour

205

A PAIR OF DIAMOND EARRINGS

Each designed as an hexagonal cluster of brilliant-cut diamonds, diamonds approximately 1.90cts total, length approximately 1.5cm

€ 800 - 1,000

206

A DIAMOND AND SAPPHIRE PENDANT NECKLACE, WITH A PAIR OF EARRINGS SUITE

The heart-shaped bombé pendant, set with round-shaped sapphire and diamond flower motifs, within a pavé-set diamond surround, suspended from a cable-link chain, interspersed to the front by four heart-shaped links, with a pair of earrings of similar design, mounted in 18K gold, Italian assay marks, French import mark, necklace length 42cm, earrings length 1cm

€ 2,000 - 2,500



202

201



206



204



203



205

Cartier



General Terms and Conditions of Business

The Auctioneer carries on business on the following terms and conditions and on such other terms or conditions as may be expressly agreed with the Auctioneer or set out in any relevant Catalogue. Conditions 12-21 relate mainly to buyers and conditions 22-32 relate mainly to sellers. Words and phrases with special meanings are defined in condition 1. Buyers and sellers are requested to read carefully the Cataloguing Practice and Catalogue Explanation contained in condition 2.

DEFINITIONS AND GENERAL CONDITIONS

DEFINITIONS

1. In these conditions the following words and expressions shall have the following meanings:
'Auctioneer' – James Adam & Sons.
'Auctioneer's Commission' – The commission payable to the Auctioneer by the buyer and seller as specified in conditions 13 and 25.

'Catalogue' – Any advertisement, brochure, estimate, price list or other publication.

'Forgery' – A Lot which was made with the intention of deceiving with regard to authorship, culture, source, origin, date, age or period and which is not shown to be such in the description therefore in the Catalogue and the market value for which at the date of the auction was substantially less than it would have been had the Lot been in accordance with the Catalogue description.

'Hammer Price' – The price at which a Lot is knocked down by the Auctioneer to the buyer.

'Lot' – Any item which is deposited with the Auctioneer with a view to its sale at auction and, in particular, the item or items described against any Lot number in any Catalogue.

'Proceeds of Sale' – The net amount due to the seller being the Hammer Price of the Lot after deducting the Auctioneer's Commission thereon under condition 25 the seller's contribution towards insurance under condition 26, such VAT as is chargeable and any other amounts due by the seller to the Auctioneer in whatever capacity howsoever arising.

'Registration Form or Register' – The registration form (or, in the case of persons who have previously attended at auctions held by the Auctioneer and completed registration forms, the register maintained by the Auctioneer which is compiled from such registration forms) to be completed and signed by each prospective buyer or, where the Auctioneer has acknowledged pursuant to condition 12 that a bidder is acting as agent on behalf of a named principal, each such bidder prior to the commencement of an auction.

'Sale Order Form' – The sale order form to be completed and signed by each seller prior to the commencement of an auction.

'Total Amount Due' – The Hammer Price of the Lot sold, the Auctioneer's Commission due thereon under condition 13, such VAT as is chargeable and any additional interest, expenses or charges due hereunder.

'V.A.T.' – Value Added Tax.

Cataloguing Practice and Catalogue Explanations

2. Terms used in Catalogues have the following meanings and the Cataloguing Practice is as follows:

The first name or names and surname of the artist;
In the opinion of the Auctioneer a work by the artist.

The initials of the first name(s) and the surname of the artist;
In the opinion of the Auctioneer a work of the period of the artist and which may be in whole or in part the work of the artist.

The surname only of the artist;
In the opinion of the Auctioneer a work of the school or by one of the followers of the artist or in his style.

The surname of the artist preceded by 'after';
In the opinion of the Auctioneer a copy of the work of the artist.
'Signed'/ 'Dated'/ 'Inscribed';
In the opinion of the Auctioneer the work has been signed/dated/inscribed by the artist.

'With Signature'/ 'with date'/ 'with inscription';
In the opinion of the Auctioneer the work has been signed/dated/inscribed by a person other than the artist.

'Attributed to';
In the opinion of the Auctioneer probably a work of the artist.

'Studio of/Workshop of'
In the opinion of the Auctioneer a work executed in the studio of the artist and possibly under his supervision.

'Circle of';
In the opinion of the Auctioneer a work of the period of the artist and showing his influence.

'Follower of';
In the opinion of the Auctioneer a work executed in the artist's style yet not necessarily by a pupil.

'Manner of';
In the opinion of the Auctioneer a work executed in artist's style but of a later date.
'*';

None of the terms above are appropriate but in the Auctioneer's opinion the work is a work by the artist named.

GENERAL CONDITIONS

Auctioneer Acting as Agent
3. The Auctioneer is selling as agent for the seller unless it is specifically stated to the contrary. The Auctioneer as agent for the seller is not responsible for any default by the seller or the buyer.

Auctioneer Bidding on behalf of Buyer

4. It is suggested that the interests of prospective buyers are best protected and served by the buyers attending at an auction. However, the Auctioneer will, if instructed, execute bids on behalf of a prospective buyer. Neither the Auctioneer nor its employees, servants or agents shall be responsible for any neglect or default in executing bids or failing to execute bids.

Admission to Auctions
5. The Auctioneer shall have the right exercisable in its absolute discretion to refuse admission to its premises or attendance at its auctions by any person.

Acceptance of Bids
6. The Auctioneer shall have the right exercisable in its absolute discretion to refuse any bids, advance the bidding in any manner it may decide, withdraw or divide any Lot, combine any two or more Lots and, in the case of a dispute, to put any Lot up for auction again.

Indemnities
7. Any indemnity given under these conditions shall extend to all actions, proceedings, claims, demands, costs and expenses whatever and howsoever incurred or suffered by the person entitled to the benefit of the indemnity and the Auctioneer declares itself to be a trustee of the benefit of every such indemnity for its employees, servants or agents to the extent that such indemnity is expressed to be for their benefit.

Representations in Catalogues
8. Representations or statements made by the Auctioneer in any Catalogue as to contribution, authorship, genuineness, source, origin, date, age, provenance, condition or estimated selling price or value is a statement of opinion only. Neither the Auctioneer nor its employees, servants or agents shall be responsible for the accuracy of any such opinions. Every person interested in a Lot must exercise and rely on their own judgment and opinion as to such matters.

9. The headings of the conditions herein contained are inserted for convenience of reference only and are not intended to be part of, or to effect, the meaning or interpretation thereof.

Governing Law
10. These conditions shall be governed by and construed in accordance with Irish Law.

Notices
11. Any notice or other communication required to be given by the Auctioneer hereunder to a buyer or a seller shall, where required, be in writing and shall be sufficiently given if delivered by hand or sent by post to, in the case of the buyer, the address of the buyer specified in the Registration Form or Register, and in the case of the seller, the address of the seller specified in the Sale Order Form or to such other address as the buyer or seller (as appropriate) may notify the Auctioneer in writing. Every notice or communication given in accordance with this condition shall be deemed to have been received if delivered by hand on the day and time of delivery and if delivered by post three (3) business days after posting.

The Buyer
12. The buyer shall be the highest bidder acceptable to the Auctioneer who buys at the Hammer Price. Any dispute which may arise with regard to bidding or the acceptance of bids shall be settled by the Auctioneer. Every bidder shall be deemed to act as principal unless the Auctioneer has prior to the auction, acknowledged in writing that a bidder is acting as agent on behalf of a named principal.

Commission

13. The buyer shall pay the Auctioneer a commission at the rate of 20%, exclusive of V.A.T..

Payment

14. Unless credit terms have been agreed with the Auctioneer before the auction the buyer of a Lot shall pay to the Auctioneer within one (1) day from the date of the auction the Total Amount Due. Notwithstanding this, the Auctioneer may, in its sole discretion, require a buyer to pay a deposit of 25% of the Total Amount Due at the conclusion of the auction.

The Auctioneer may apply any payments received by a buyer towards any sums owing from that buyer to the Auctioneer on any account whatever regardless of any directions of the buyer or his agent in that regard whether express or implied.

The Auctioneer shall only accept payment from successful bidders in cash or by the bidder's own cheque. Cheques drawn by third parties, whether in the Auctioneer's favour or requiring endorsement, shall not be accepted.

Reservation of Title

15. Notwithstanding delivery or passing of risk to the buyer the ownership of a Lot shall not pass to the buyer until he has paid to the Auctioneer the Total Amount Due.

Collection of Purchases

16. The buyer shall at his own expense collect the Lot purchased not later than seven (7) days after the date of the auction but (unless credit terms have been agreed with the Auctioneer pursuant to condition 14) not before payment to the Auctioneer of the Total Amount Due.

The buyer shall be responsible for any removal, storage and insurance charges in respect of any Lot which is not taken away within seven (7) days after the date of the auction.

The purchased Lot shall be at the buyer's risk in all respects from the earlier of the time of collection or the expiry of one (1) day from the date of the auction. Neither the Auctioneer nor its employees, servants or agents shall thereafter be liable for any loss or damage of any kind howsoever caused while a purchased Lot remains in its custody or control after such time.

Packaging and Handling of Purchased Lots

17. Purchased Lots may be packed and handled by the Auctioneer, its employees, servants or agents. Where this is done it is undertaken solely as a courtesy to buyers and at the discretion of the Auctioneer. Under no circumstances shall the Auctioneer, its employees, servants or agents be liable for damage of any kind and howsoever caused to glass or frames nor shall the Auctioneer be liable for the errors or omissions of, or for any damage caused by, any packers or shippers which the Auctioneer has recommended.

Non-Payment or Failure to Collect Purchased Lots

18. If a buyer fails to pay for and/or collect any purchased Lot by the dates herein specified for payment and collection the Auctioneer shall, in its absolute discretion and without prejudice to any other rights or remedies it may have, be entitled to exercise one or more of the following rights or remedies without further notice to the buyer:

- (a) To issue court proceedings for damages for breach of contract;
- (b) To rescind the sale of that Lot or any other Lots sold to the buyer whether at that or at any other auction;
- (c) To resell the Lot or cause it to be resold whether by public auction or private sale. In the event that there is a deficiency between the Total Amount Due by the buyer and the amount received by the Auctioneer on such resale after deduction of any necessary expenses the difference shall be paid to the Auctioneer by the buyer. Any surplus arising shall belong to the seller.
- (d) To store (whether at the Auctioneer's premises or elsewhere) and insure the purchased Lot at the expense of the buyer.
- (e) To charge interest on the Total Amount Due at the rate of 2% over and above the base rate from time to time of Bank of Ireland or if there be no such rate, the nearest equivalent thereto as determined by the Auctioneer in its absolute discretion from the date on which payment is due hereunder to the date of actual payment.
- (f) To retain that Lot or any other Lot purchased by the buyer whether at the same or any other auction and release same to the buyer only after payment to the Auctioneer of the Total Amount Due.
- (g) To apply any sums which the Auctioneer received in respect of Lots being sold by the buyer towards settlement of the Total Amount Due.
- (h) To exercise a lien on any property of the buyer in the possession of the Auctioneer or whatever reason.

Liability of Auctioneer and Seller

19. Prior to auction ample opportunity is given for the inspection of the Lots on sale and each buyer by making a bid acknowledges that he has, by exercising and relying on his own judgment, satisfied himself as to the physical condition, age and Catalogue description of each Lot (including but not restricted to whether the Lot is damaged or has been repaired or restored). All Lots are sold with all faults and imperfections and errors of description. None of the seller, the Auctioneer nor any of their employees, servants or agents shall be responsible for any error of description or for the condition or authenticity of any Lot. No warranty whatsoever is given by the seller or Auctioneer or by any of their employees, servants or agents in respect of any Lot and any condition or warranty express or implied by statute or otherwise is hereby specifically excluded.

Forgeries

20. Any amount paid by a buyer in respect of a Lot which, if it is proved within three (3) years of the date of the auction at which it was purchased, to have been a Forgery shall be refunded to the seller subject to the provisions hereof, provided that:

(a) The Lot has been returned by the buyer to the Auctioneer within three (3) years of the date of the auction in the same condition in which it was at the time of the auction together with evidence proving that it is a Forgery, the number of the Lot and the date of the auction at which it was purchased;

(b) The Auctioneer is satisfied that the Lot is a Forgery and that the buyer has and is able to transfer good and marketable title to the Lot free from any third party claims;

FURTHER PROVIDED THAT the buyer shall have no rights hereunder if:

(i) The description of the Lot in the Catalogue at the time of the auction was in accordance with the then generally accepted opinion of scholars or experts or fairly indicated that there was a conflict of such opinion;

(ii) The only method of establishing at the time of the auction in question that the Lot was a Forgery would have been by means of scientific processes which were not generally accepted for use until after the date of the auction or which were unreasonably expensive or impractical.

The buyer's sole entitlement under this condition is to a refund of the actual amount paid by him in respect of the Lot. Under no circumstances shall the Auctioneer be liable for any damage, loss (including consequential, indirect or economic loss) or expense suffered or incurred by the buyer by reason of the Lot being a Forgery.

The benefit of this condition shall be solely and exclusively for the buyer and shall not be assignable. The buyer shall for the purpose of this condition be the person to whom the original invoice in respect of the sale of the Lot is made.

Photographs

21. The buyer authorises the Auctioneer at any time to make use of any photographs or illustrations of the Lot purchased by the buyer for such purposes as the Auctioneer may require.

CONDITIONS WHICH MAINLY CONCERN THE SELLER

Auctioneer's Discretion

22. With regard to the sale of any Lot the Auctioneer shall have the following powers exercisable solely in the discretion of the Auctioneer:

- (i) To decide whether to offer any Lot for sale or not;
- (ii) To decide whether a particular Lot is suitable for sale by the Auctioneer and, if so, to determine which auction, the place and date of sale, the conditions of sale and the manner in which such sale should be conducted;
- (iii) To determine the description of any Lot in a Catalogue.
- (iv) To decide whether the views of any expert shall be obtained and to submit Lots for examination by any such experts.
- (v) To determine what illustration of a Lot (if any) is to be included in the Catalogue.

Seller's Warranty and Indemnity

23. The seller warrants to the Auctioneer and to the buyer that he is the true owner of the Lot or is legally authorised to sell the Lot on behalf of the true owner and can transfer good and marketable title to the Lot free from any third party claims. As regards Lots not held by the Auctioneer on its premises or under its control the seller warrants and undertakes to the Auctioneer and the buyer that the Lot will be available and in a deliverable state on demand by the Auctioneer or buyer. The seller shall indemnify the Auctioneer and the buyer or any of their respective employees, servants or agents against any loss or damage suffered by any of them in consequence of any breach of the above warranties or undertakings by the seller.

Reserves

24. Subject to the Auctioneer's discretion, the seller shall be entitled prior to the auction to place a reserve on any Lot. All reserves must be agreed in advance by the Auctioneer and entered on the Sale Order Form or subsequently be confirmed in writing to the Auctioneer prior to auction. This also applies to changes in reserves. A reserve may not be placed upon any Lots under IRE100 in value. The reserve shall be the minimum Hammer Price at which the Lot may be sold by the Auctioneer. A reserve once in place may only be changed with the consent of the Auctioneer. A commission shall be charged on the 'knock-down' bid for Lots which fail to reach the reserve price. Such commission shall be 5% of the 'knock-down' bid. This commission and any VAT payable thereon must be paid before removal of the Lot after the auction. The minimum commission hereunder shall be IR E25. The Auctioneer may in its sole discretion sell a Lot at a Hammer Price below the reserve therefore but in such case the Proceeds of Sale to which the seller shall be entitled shall be the same as they would have been

had the sale been at the reverse.

Unless a reserve has been placed on a Lot in accordance with the provisions set out above such Lot shall be put up for sale without reserve.

In the event that any reserve price is not reached at auction then for so long as the Lot remains with the Auctioneer and to the extent that the Lot has not been re-entered in another auction pursuant to condition 31 the seller authorises the Auctioneer to sell the Lot by private treaty at not less than the reserve price. The Auctioneer shall ensure that in such a case those conditions herein which concern mainly the buyer shall, with any necessary modification, apply to such sale.

Commission

25. The seller shall pay the Auctioneer commission at the rate of 10% on the Hammer Price of all Lots sold on behalf of the seller at Irish Art Sales and 17.5% on the Hammer Price of all Lots sold on behalf of the seller at Fine Art, Wine and Militaria Sales together with V.A.T. thereon at the applicable rate. The seller authorises the Auctioneer to deduct from the Hammer Price paid by the buyer the Auctioneer's Commission under this condition; VAT payable at the applicable rates and any other amounts due by the seller to the Auctioneer in whatever capacity howsoever arising. The seller agrees that the Auctioneer may also receive commission from the buyer pursuant to condition 13.

Insurance

26. Unless otherwise instructed by the seller, all Lots (with the exception of motor vehicles) deposited with the Auctioneer or put under its control for sale shall automatically be insured by the Auctioneer under the Auctioneer's own fine arts policy for such sum as the Auctioneer shall from time to time in its absolute discretion determine. The seller shall pay the Auctioneer a contribution towards such insurance at the rate of 1% of the Hammer Price plus VAT. If the seller instructs the Auctioneer not to insure a Lot then the Lot shall at all times remain at the risk of the seller who undertakes to indemnify the Auctioneer and hold the Auctioneer harmless against any and all claims made or proceedings brought against the Auctioneer of whatever nature and howsoever and wheresoever occurring for loss or damage to the Lot. The sum for which a Lot is covered for insurance under this condition shall not constitute and shall not be relied upon by the seller as a representation, warranty or guarantee as to the value of the Lot or that the Lot will, if sold by the Auctioneer, be sold for such amount. Such insurance shall subsist until such time as the Lot is paid for and collected by the buyer or, in the case of Lots sold which are not paid for or collected by the buyer by the due date hereunder for payment or collection such due date or, in the case of Lots which are not sold, on the expiry of seven (7) days from the date on which the Auctioneer has notified the seller to collect the Lots.

Rescission of Sale

27. If before the Auctioneer has paid the Proceeds of Sale to the seller the buyer proves to the satisfaction of the Auctioneer that the Lot sold is a Forgery and the requirements of condition 20 are satisfied the Auctioneer shall rescind the sale and refund to the buyer any amount paid to the Auctioneer by the buyer in respect of the Lot.

Payment of Proceeds of Sale

28. The Auctioneer shall remit the Proceeds of Sale to the seller not later than thirty (30) days after the date of the auction, provided however that, if by that date, the Auctioneer has not received the Total Amount Due from the buyer then the Auctioneer shall remit the Proceeds of Sale within seven (7) working days after the date on which the Total Amount Due is received from the buyer. If credit terms have been agreed between the Auctioneer and the buyer the Auctioneer shall remit to the seller the Proceeds of Sale not later than thirty (30) days after the date of the auction unless otherwise agreed by the seller.

If before the Total Amount Due is paid by the buyer the Auctioneer pays the seller an amount equal to the Proceeds of Sale then title to the Lot shall pass to the Auctioneer.

If the buyer fails to pay the Auctioneer the Total Amount Due within fourteen (14) days after the date of the auction, the Auctioneer shall endeavour to notify the seller and take the seller's instructions on the course of action to be taken and, to the extent that it is in the sole opinion of the Auctioneer feasible, shall endeavour to assist the seller to recover the Total Amount Due from the buyer provided that nothing herein shall oblige the Auctioneer to issue proceedings against the buyer in the Auctioneer's own name. If circumstances do not permit the Auctioneer to take instructions from the seller or, if after notifying the seller, it does not receive instructions within seven (7) days, the Auctioneer reserves the right, and is hereby authorised by the seller at the seller's expense, to agree special terms for payments of the Total Amount Due, to remove, store and insure the Lot sold, to settle claims made by or against the buyer on such terms as the Auctioneer shall in its absolute discretion think fit, to take such steps as are necessary to collect monies due by the buyer to the seller and, if necessary, to rescind the sale and refund money to the buyer.

Payment of Proceeds to Overseas Sellers

29. If the seller resides outside Ireland the Proceeds of Sale shall be paid to such seller in Irish Punts unless it was agreed with the seller prior to the auction that the Proceeds of Sale would be paid in a currency (other than Irish Punts) specified by the seller in which case the Proceeds of Sale shall be paid by the Auctioneer to the seller in such specified currency (provided that that currency is legally available to the Auctioneer in the amount required) calculated at the rate of exchange quoted to the Auctioneer by its bankers on the date of payment.

Charges for Withdrawn Lots

30. Once catalogued, Lots withdrawn from sale before proofing/publication of Catalogue will be subject to commission of 5% of the Auctioneer's latest estimate of the auction price of the Lot withdrawn together with VAT thereon and any expenses incurred by the Auctioneer in relation to the Lot. If Lots are withdrawn after proofing or publication of Catalogue they will be subject to a commission of 10% of the Auctioneer's latest estimate of the auction price of the Lot withdrawn together with VAT thereon and any expenses incurred by the Auctioneer in relation to the Lot. All commission hereunder must be paid for before Lots withdrawn may be removed.

Unsold Lots

31. Where any Lot fails to sell at auction the Auctioneer shall notify the seller accordingly and (in the absence of agreement between the seller and the Auctioneer to the contrary) such Lot may, in the absolute discretion of the Auctioneer, be re-entered in the next suitable auction unless instructions are received from the seller to the contrary, otherwise such Lots must be collected at the seller's expense within the period of thirty (30) days of such notification from the Auctioneer.

Upon the expiry of such period the Auctioneer shall have the right to sell such Lots by public auction or private sale and on such terms as the Auctioneer in its sole discretion may think fit. The Auctioneer shall be entitled to deduct from the price received for such Lots any sums owing to the Auctioneer in respect of such Lots including without limitation removal, storage and insurance expenses, any commission and expenses due in respect of the prior auction and commission and expenses in respect of the subsequent auction together with all reasonable expenses before remitting the balance to the seller. If the seller cannot be traced the balance shall be placed in a bank account in the name of the Auctioneer for the seller. Any deficit arising shall be due from the seller to the Auctioneer. Any Lots returned at the seller's request shall be returned at the seller's risk and expense and will not be insured in transit unless the Auctioneer is so instructed by the seller.

Auctioneer's Right to Photographs and Illustrations

32. The seller authorises the Auctioneer to photograph and illustrate any Lot placed with it for sale and further authorises the Auctioneer to use such photographs and illustrations and any photographs and illustrations provided by the seller at any time in its absolute discretion (whether or not in connection with the auction).

Catalogue illustrations are included at the discretion of the Auctioneer. Illustration charges will be calculated on the particular category of sale. These charges are subject to change. Irish Art Sale Illustrations: €150.00 full page, €100.00 half page, €50.00 other sizes. Fine Art Illustrations: Scaled fee: €100.00 for lots sold for €3,000.00 and over, hammer price, €50.00 for lots sold under €3,000.00 hammer price. All other sales: €25.00 per illustration. All lots illustrated and not sold are charged €25.00 per illustration.

VAT

34. It is presumed, unless stated to the contrary, that the items listed herein are auction scheme goods as defined in the Finance Act 1995.

35. Artist's Resale Rights (Droit de Suite)

Government Regulations (S.1. 312/2006)

Under this legislation a royalty (droit de suite) is payable to artists or the artist's heirs (if deceased in the last 70 years) of E.U. nationality on all works resold for €3,000 or more, other than those sold by the artist or the artist's agent.

The resale royalty payable is calculated as follows:

From €3,000 to €50,000	4%
From €50,000.01 to €200,000	3%
From €200,000.01 to €350,000	1%
From €350,000.01 to €500,000	0.5%
Exceeding €500,000	0.25%

The total amount of royalty payable on any individual sale shall not exceed €12,500 The seller is liable for payment (paragraph 7.1 of Government Regulations (S.1. 312/2006) of this royalty on completion of the sale. The artist may request from the Auctioneer any information necessary to secure payment.

The Auctioneer will automatically deduct the amount due from the proceeds of sale and will hold in trust for the artist, their heirs or their representative for a period of 3 years from the date of sale. A vendor may choose to check the ARR Waiver on the Sale Receipt Contract indicating that they accept sole responsibility for the payment and authorises the Auctioneers to disclose their contact details to the artist, their heirs or their representative.

e x u m a







ADAM'S Est 1887

26 ST. STEPHENS GREEN, DUBLIN 2, IRELAND